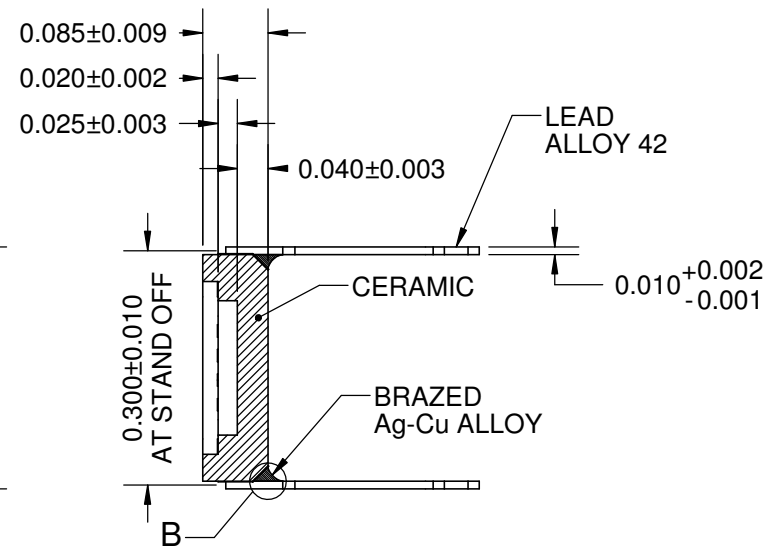
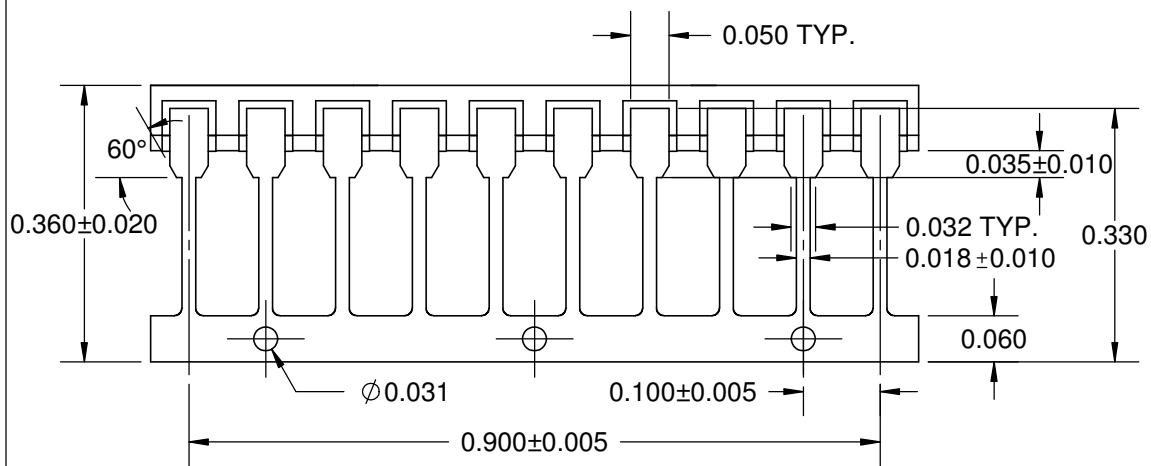


DIE PAD
 0.174 x 0.244-inch
 4.4 x 6.2mm



DETAIL B
 SCALE 10 : 1

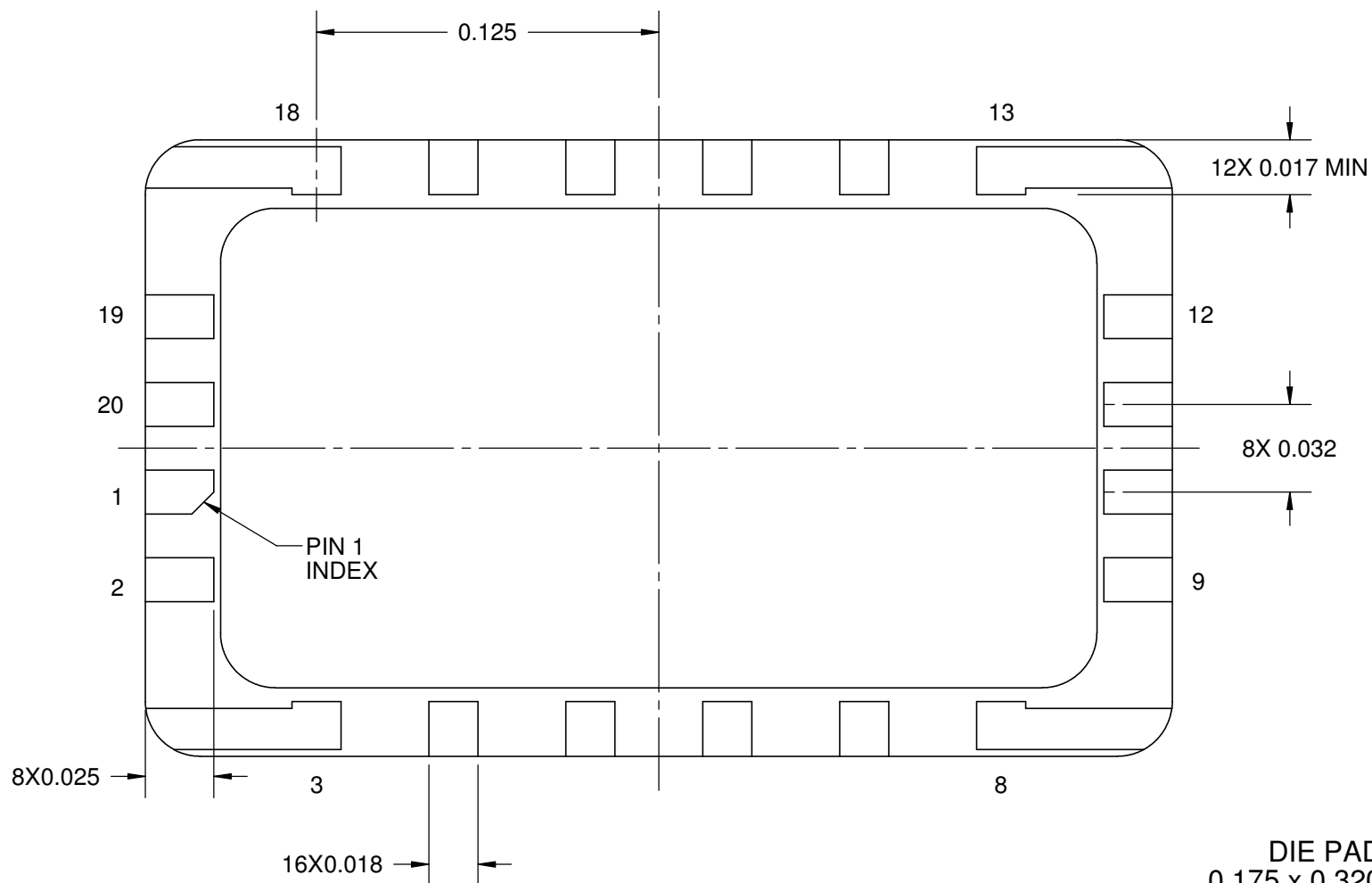


- NOTES: (Unless Otherwise Specified).
1. GOLD PLATE 60 micro-inch over 100 micro-inch (MIN) NICKEL.
 2. SEAL AREA TO BE METALLIZED.
 3. SEE PART NUMBER TABLE FOR DIE ATTACH METALLIZATION.
 4. SEAL RING AND DIE ATTACH PAD TO BE FLOATING FROM ANY PINS.
 5. LEAD RESISTANCE: 0.30 OHM MAX.
 6. TOLERANCE ±0.005-INCH UNLESS OTHERWISE SPECIFIED.
 7. CERAMIC (Al₂O₃ BLACK) SIDE-BRAZE PACKAGE KOVAR LEAD FRAME WITH GOLD METALLIZATION.

PART NUMBER TABLE		
PART NUMBER	DIE PAD	DWG
CERDIP20F3-N175x320	GOLD	191260

APPROVALS	DATE	TopLine®			
DRAWN T. Au	1/30/2018				
ENG M. Hart	1/30/2018	TITLE CERDIP20F3-N175x320 DIE PAD 4.4mm x 8.1mm			
MFG		SCALE 4:1	SIZE A	DRAWING NO. 191260	REV A
QA		DO NOT SCALE DRAWING			SHEET 1 OF 3
CUST					
REVISED					

BONDING PADS

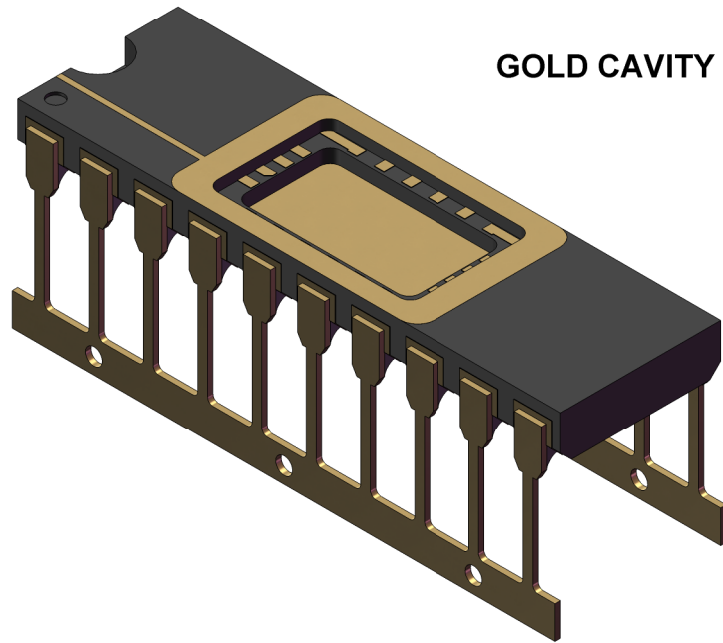


DIE PAD
0.175 x 0.320-inch
4.4 x 8.1mm

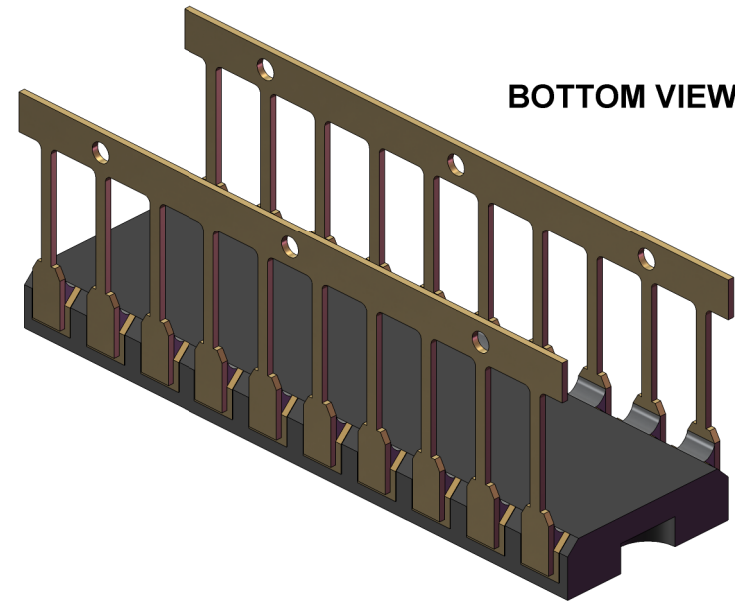
PART NUMBER TABLE		
PART NUMBER	DIE PAD	DWG
CERDIP20F3-N175x320	GOLD	191260

TopLine®			
TITLE CERDIP20F3-N175x320 DIE PAD 4.4mm x 8.1mm			
SCALE 16:1	SIZE A	DRAWING NO. 191260	REV A
DO NOT SCALE DRAWING			SHEET 2 OF 3

MODELS



GOLD CAVITY



BOTTOM VIEW

PART NUMBER TABLE		
PART NUMBER	DIE PAD	DWG
CERDIP20F3-N175x320	GOLD	191260

TopLine[®]			
TITLE CERDIP20F3-N175x320 DIE PAD 4.4mm x 8.1mm			
SCALE 5:1	SIZE A	DRAWING NO. 191260	REV A
DO NOT SCALE DRAWING			SHEET 3 OF 3