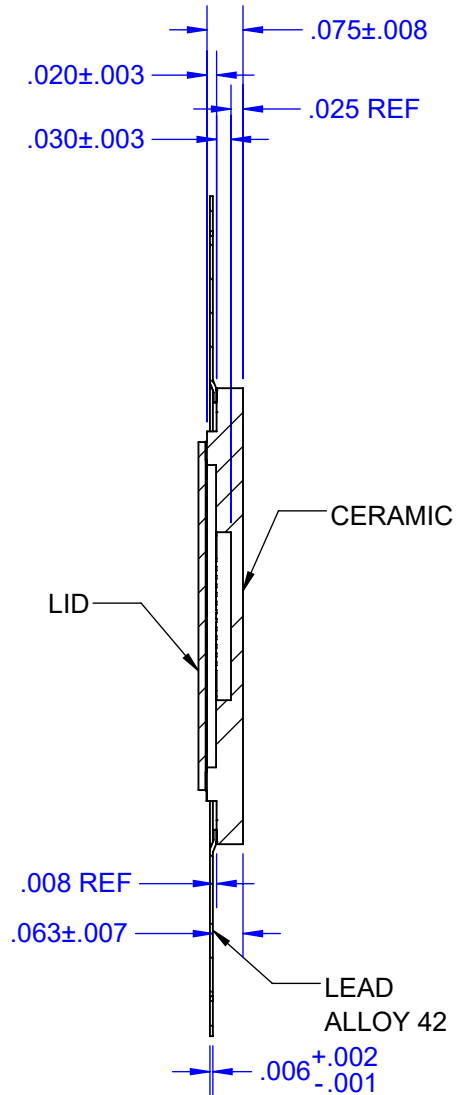
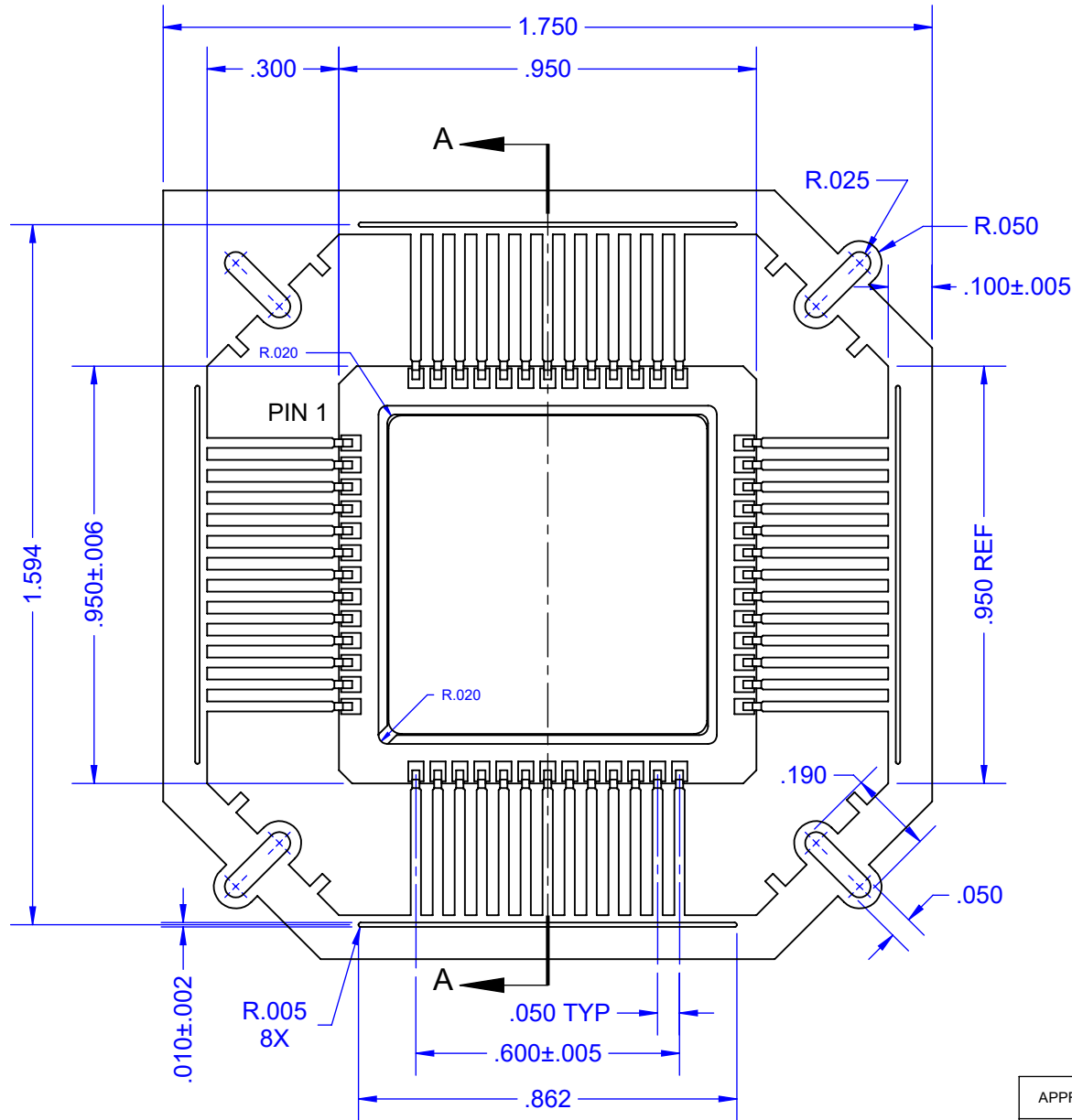


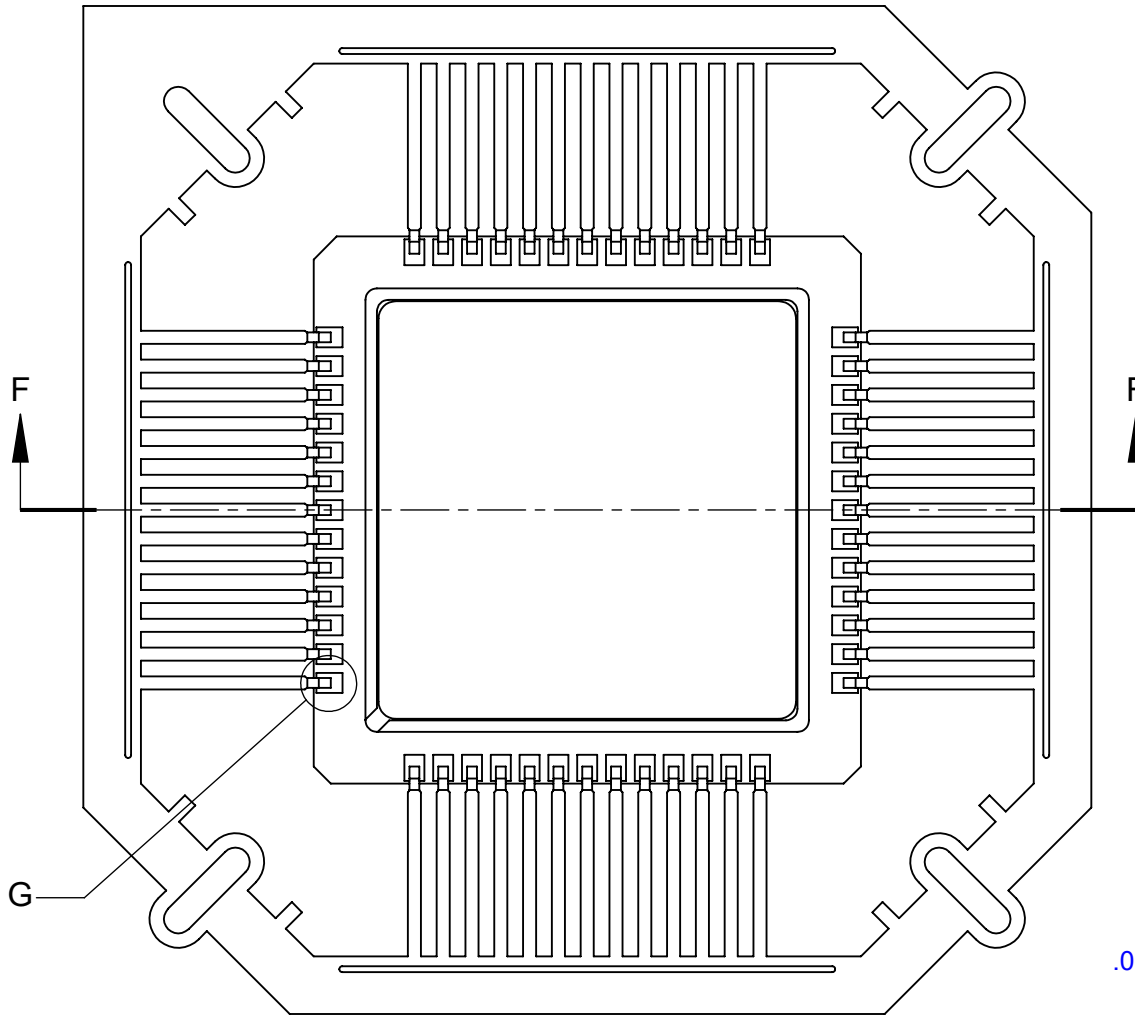
# WITH LID



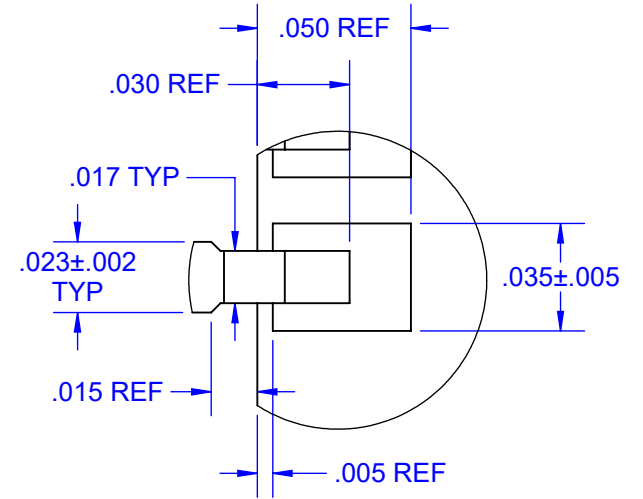
Notes: (Unless Otherwise Specified)

- 1) DIMENSIONS: INCH [mm].
- 2) FLAT LEADS ON TIE BAR KOVAR OR ALLOY 42.
- 3) ALL EXPOSED METAL GOLD PLATED (Au).
- 4) LEAD PITCH 50 MILS (1.27mm).

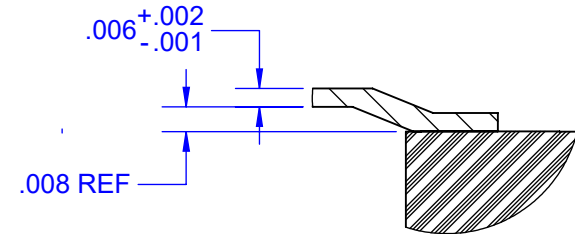
APPROVALS	DATE	<b>TopLine®</b>			
DRAWN T. Au	6/12/2022				
ENG M. Hart	6/12/2022	TITLE CERQUAD52F50T.95 52 PIN - PITCH 0.050-INCH			
MFG		SCALE	SIZE	DRAWING NO.	REV
QA		2.5:1	A	167508	A
CUST		DO NOT SCALE DRAWING			SHEET 1 OF 3
REVISED					



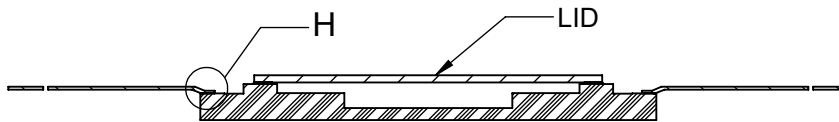
**CERQUAD LEAD FRAME WITH LID**



**DETAIL G**  
SCALE 16 : 1



**DETAIL H**  
SCALE 16 : 1



**SECTION F-F**

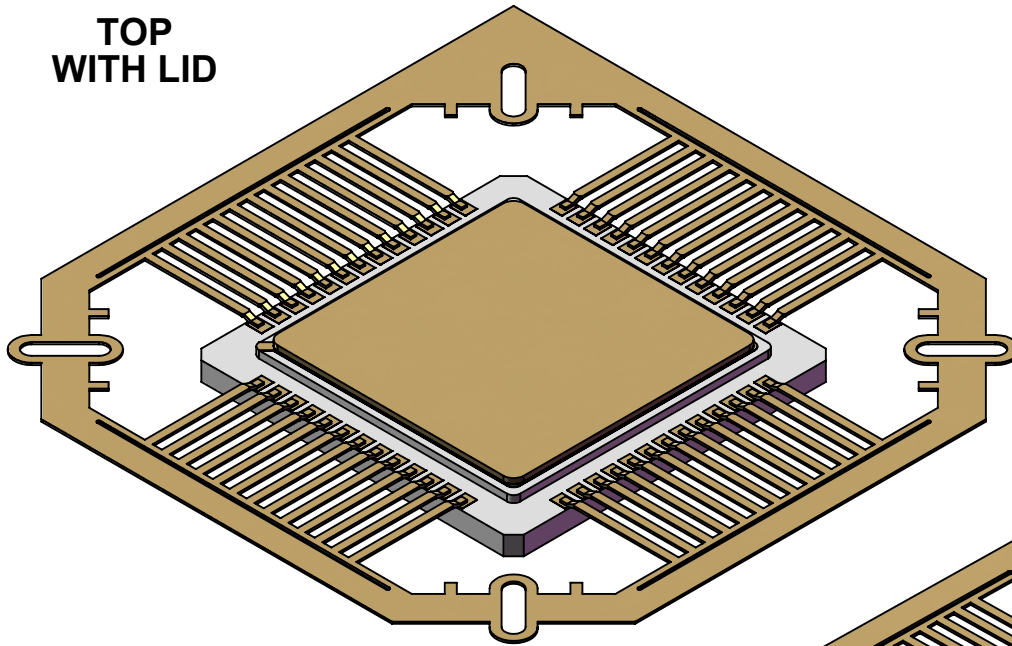
**TopLine®**

TITLE CERQUAD52F50T.95  
52 PIN - PITCH 0.050-INCH

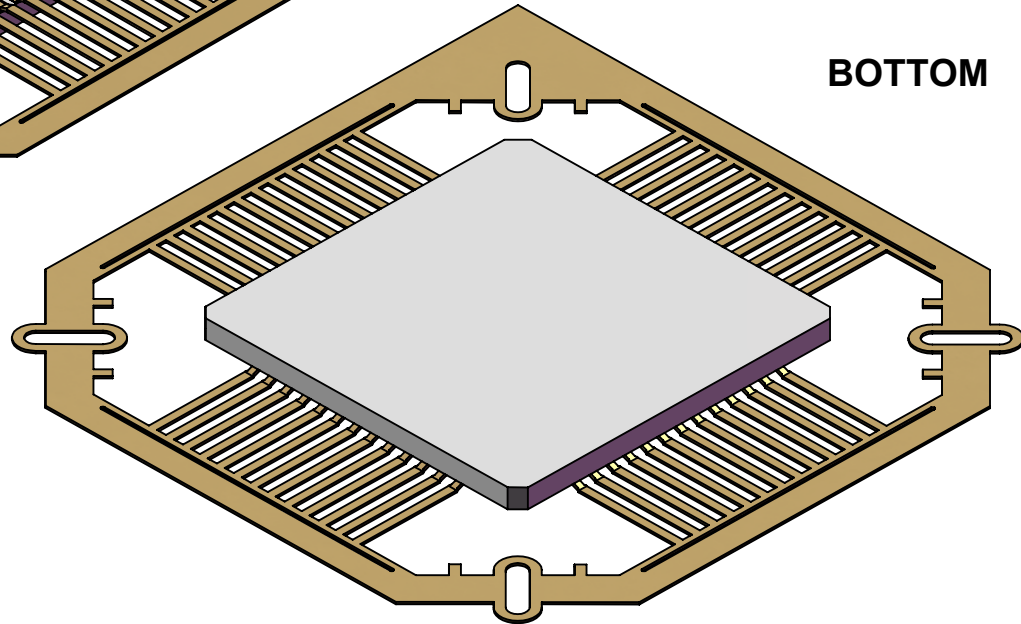
SCALE	SIZE	DRAWING NO.	REV
3:1	A	167508	A

# MODEL

TOP  
WITH LID



BOTTOM



**TopLine**<sup>®</sup>

TITLE CERQUAD52F50T.95  
52 PIN - PITCH 0.050-INCH

SCALE	SIZE	DRAWING NO.	REV
2.5:1	A	167508	A

DO NOT SCALE DRAWING

SHEET 3 OF 3