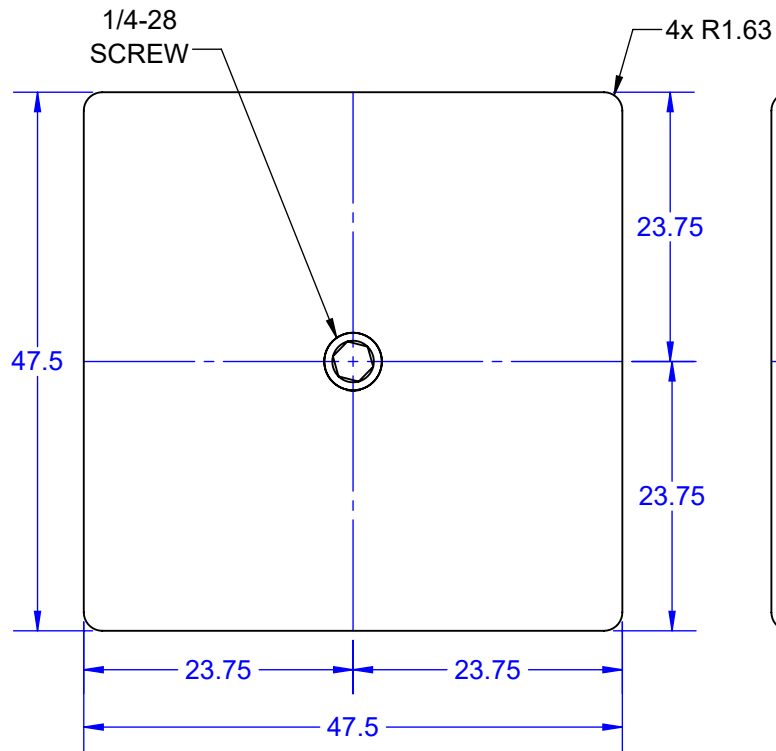
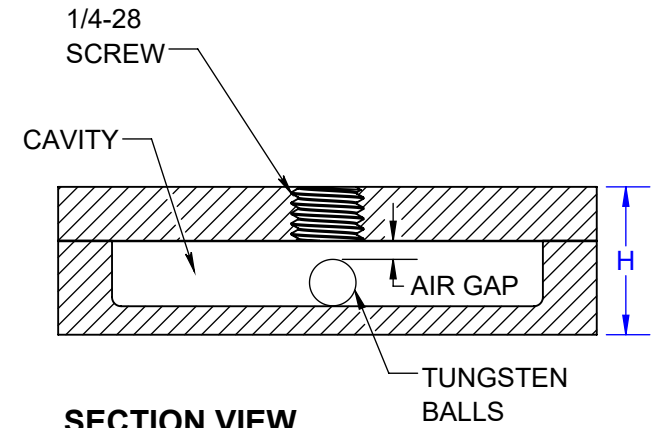
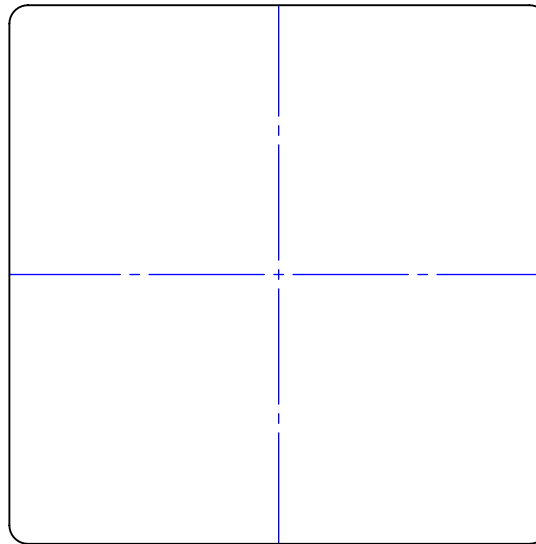


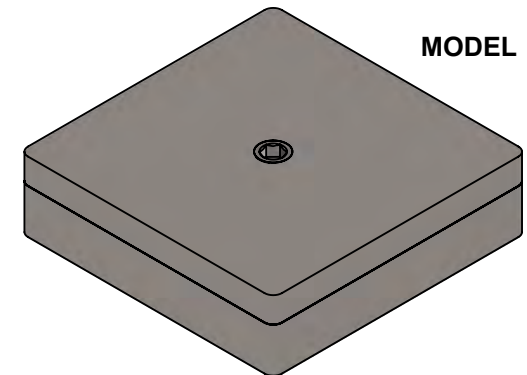
TOP VIEW



BOTTOM VIEW



SECTION VIEW



MODEL

DIMENSION AND WEIGHT (MASS) TABLE

H HEIGHT ±10%	PCB MASS NOM	TUNGSTEN BALLS IN CAVITY				Est. PID MASS	SCREW ADJUST	SCREW HEX HEAD
		Ø DIA	Per Ball	QTY	MASS			
13mm	450g	5mm	1.14g	~40	45g	~90g	1/4-28	1/8"

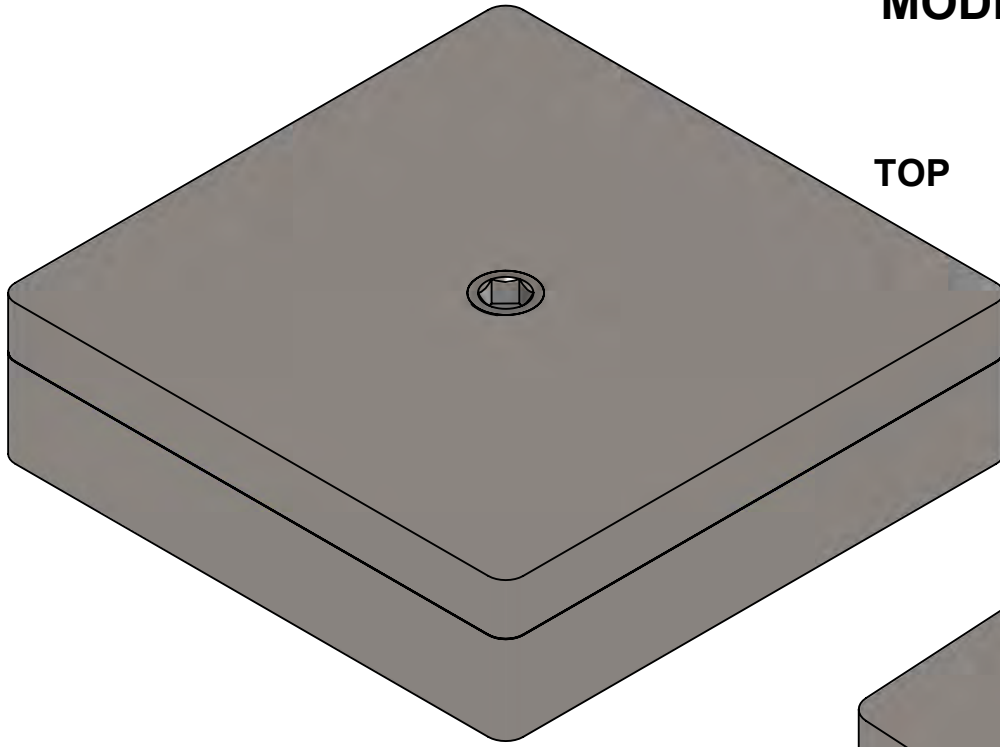
**U.S. PATENTS 10041558,
10021779, 10704639,
10704639, D842351**

NOTES: (Unless Otherwise Specified).

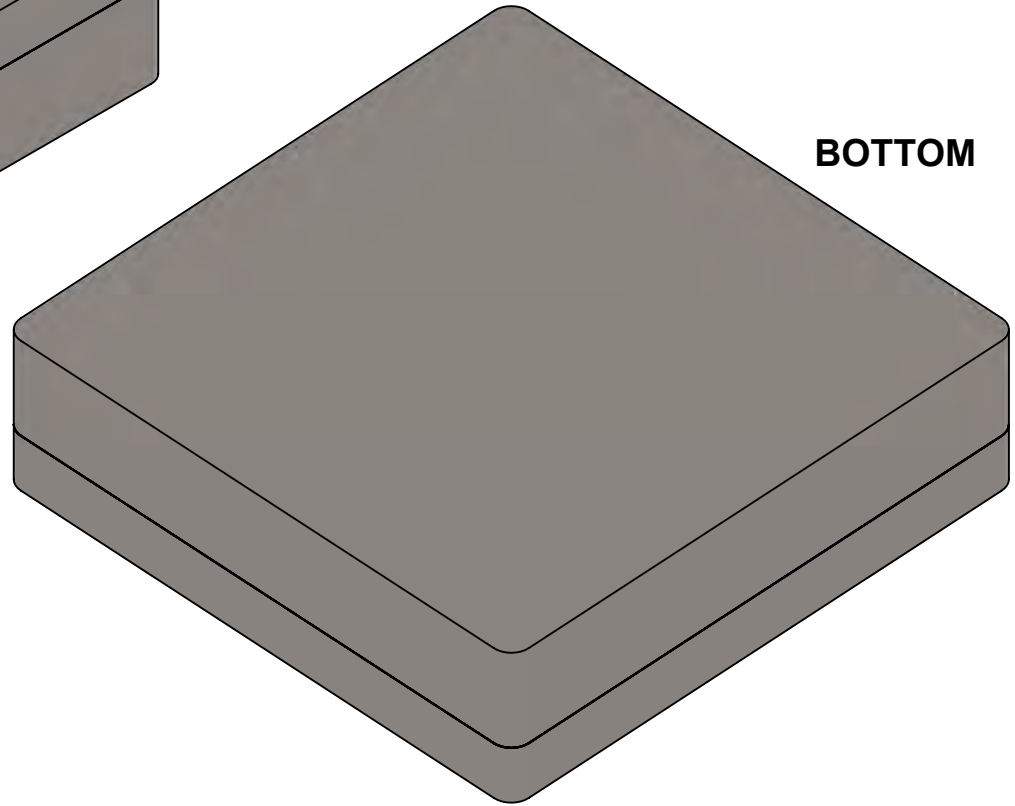
1. DIMENSIONS: mm.
2. MOUNTING: Glue or Adhesive.
3. Alternative mounting screws. See DWG 120451

APPROVALS	DATE	TopLine®			
DRAWN T. Au	6/6/2023				
ENG M. Hart	6/6/2023				
MFG		TITLE FA45SQ47.5X13A PID VIBRATION DAMPER			
QA		SCALE 1:1	SIZE A	DRAWING NO. 130451	REV A
CUST					
REVISED		DO NOT SCALE DRAWING			SHEET 1 OF 3

MODEL



TOP



BOTTOM

NOTES:

1. CONTACT TOPLINE FOR OTHER MOUNTING OPTIONS.

TopLine®

TITLE FA45SQ47.5X13A
PID VIBRATION DAMPER

SCALE 3:2	SIZE A	DRAWING NO. 130451	REV A
--------------	-----------	-----------------------	----------

DO NOT SCALE DRAWING

SHEET 2 OF 3

<u>F</u>	<u>A</u>	<u>45</u>	<u>SQ</u>	<u>47.5x</u>	<u>13</u>	<u>A</u>
Series	Mounting on PCB	Tungsten Payload Grams	Exterior Shape	XY Size	Height	Version/Option
Filled	Mounting Style	Code Grams	Code Shape	Code Size	Code Height	Code Version
F = FR4	A = ADHESIVE GLUE S = SCREW MOUNT	45 = 45gm Other Mass Available	SQ Square R Rectangle C Cylindrical T Toroid Z Custom	47.5X = 47.5mm SQ Other Sizes Available	13 = 13mm Other Sizes Available	A = STANDARD Other Version Available

Order Number

<u>1</u>	<u>3</u>	<u>045</u>	<u>1</u>
DESCRIPTION	Mount Style	Mass (gm) 9 = Decimal	Option Code
<u>Code</u> <u>Description</u>	<u>Code</u> <u>Description</u>	<u>Code</u> <u>MASS</u>	<u>Code</u> <u>Option</u>
1 = Filled PID	2 = Screw 3 = Adhesive 9 = Custom 0 = Master DWG	045 = 45 gm	1 = VERSION A

TopLine®

TITLE FA45SQ47.5X13A
PID VIBRATION DAMPER

SCALE NONE	SIZE A	DRAWING NO. 130451	REV A
---------------	-----------	-----------------------	----------

DO NOT SCALE DRAWING

SHEET 3 OF 3