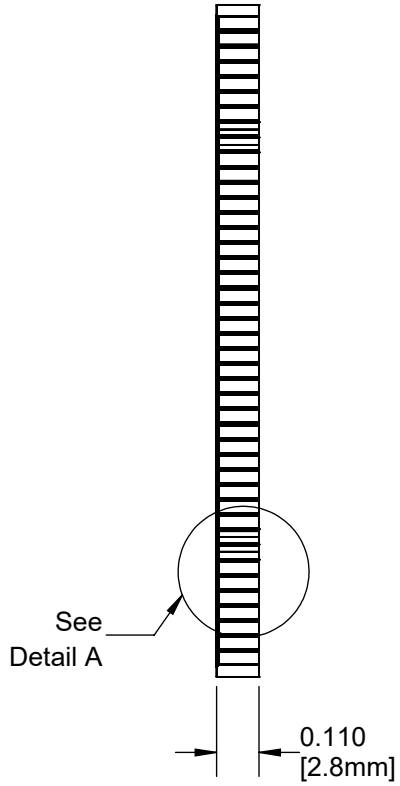
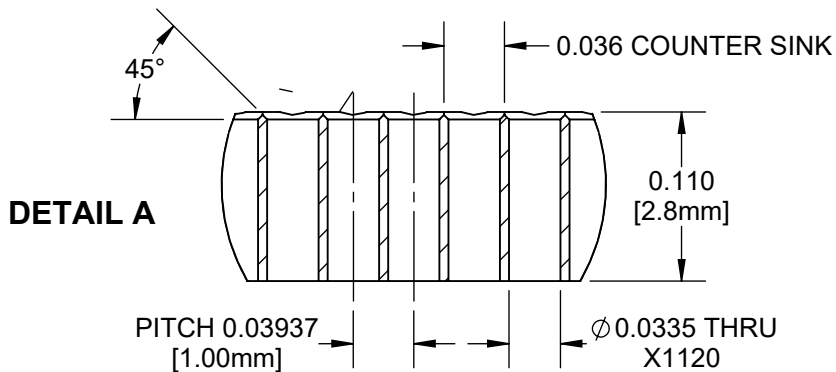
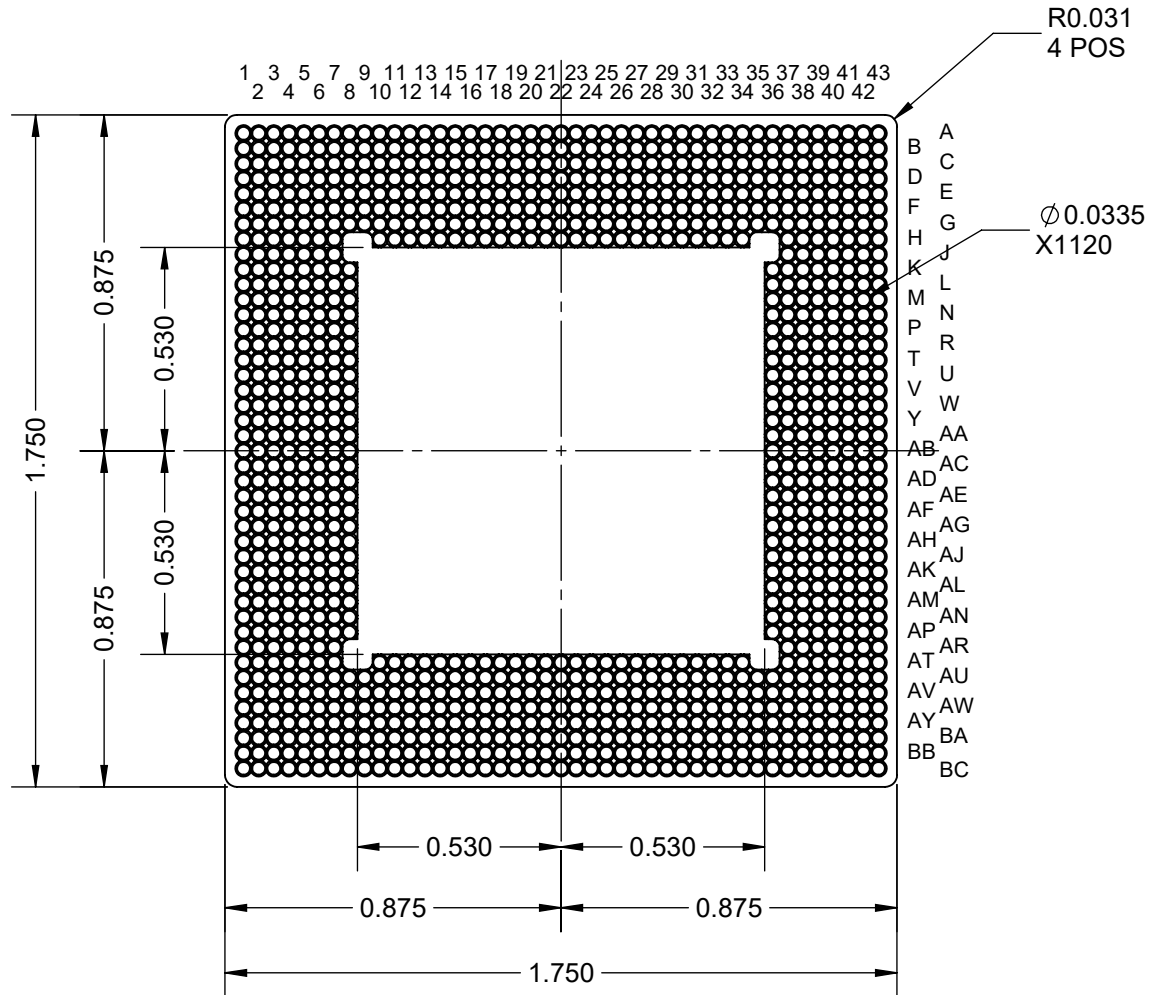


SIDE VIEW



TOP VIEW

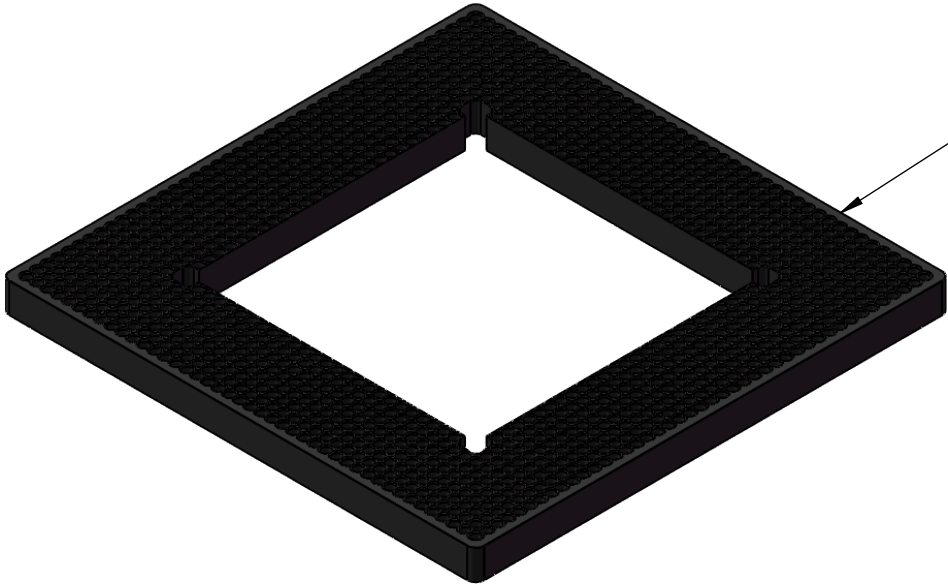


NOTES:

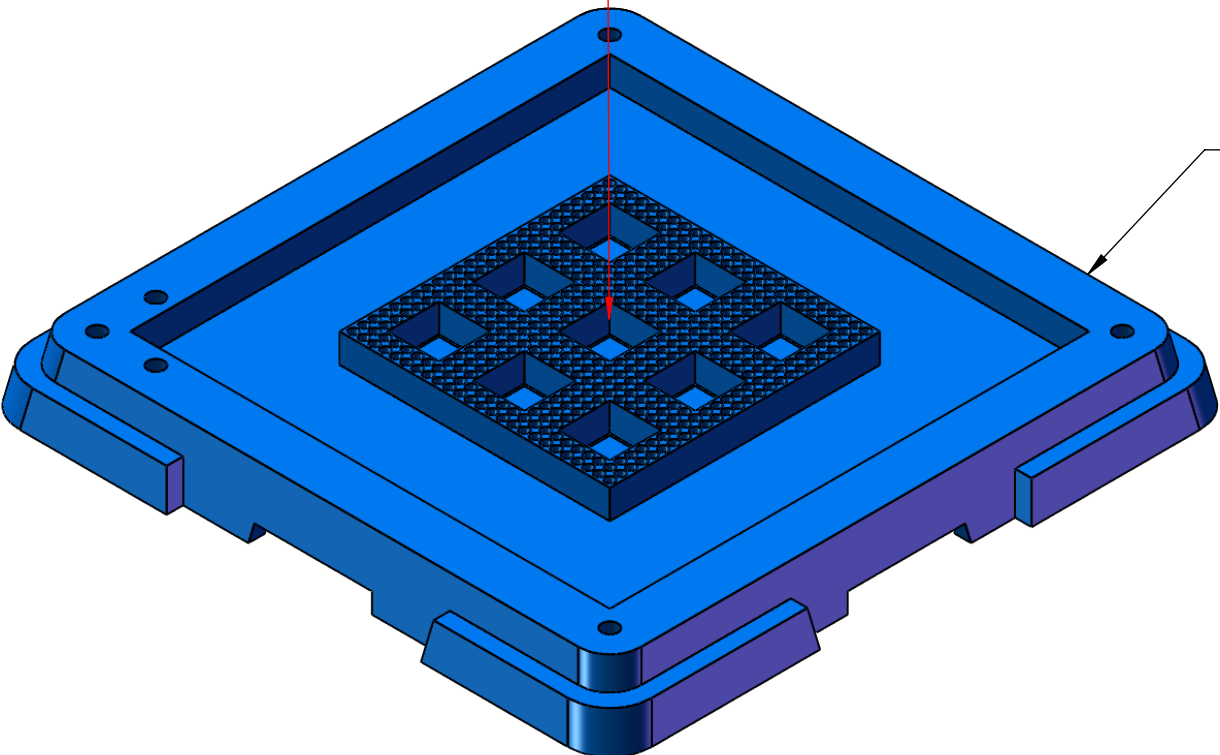
1. DIMENSIONS IN INCH UNLESS OTHERWISE STATED.
2. MATERIAL: NEMA GRADE XX BLACK.
3. INSULATIVE > 10¹² Ω.

| | | | | | |
|-------------|------------|--|-----------|-----------------------|--------------|
| APPROVALS | DATE | TopLine® | | | |
| DRAWN T. Au | 11/21/2019 | | | | |
| ENG M. Hart | 11/21/2019 | TITLE CCGA1849 TRAY ADAPTER 45mm x 45mm | | | |
| MFG | | SCALE 2:1 | SIZE A | DRAWING NO. 021433 | REV A |
| QA | | | | | |
| CUST | | DO NOT SCALE DRAWING | | | SHEET 1 OF 4 |
| REVISED | | | | | |

EXPLODED VIEW



**DWG 021433
ADAPTER**



**DWG 031000
BLUE CCGA**

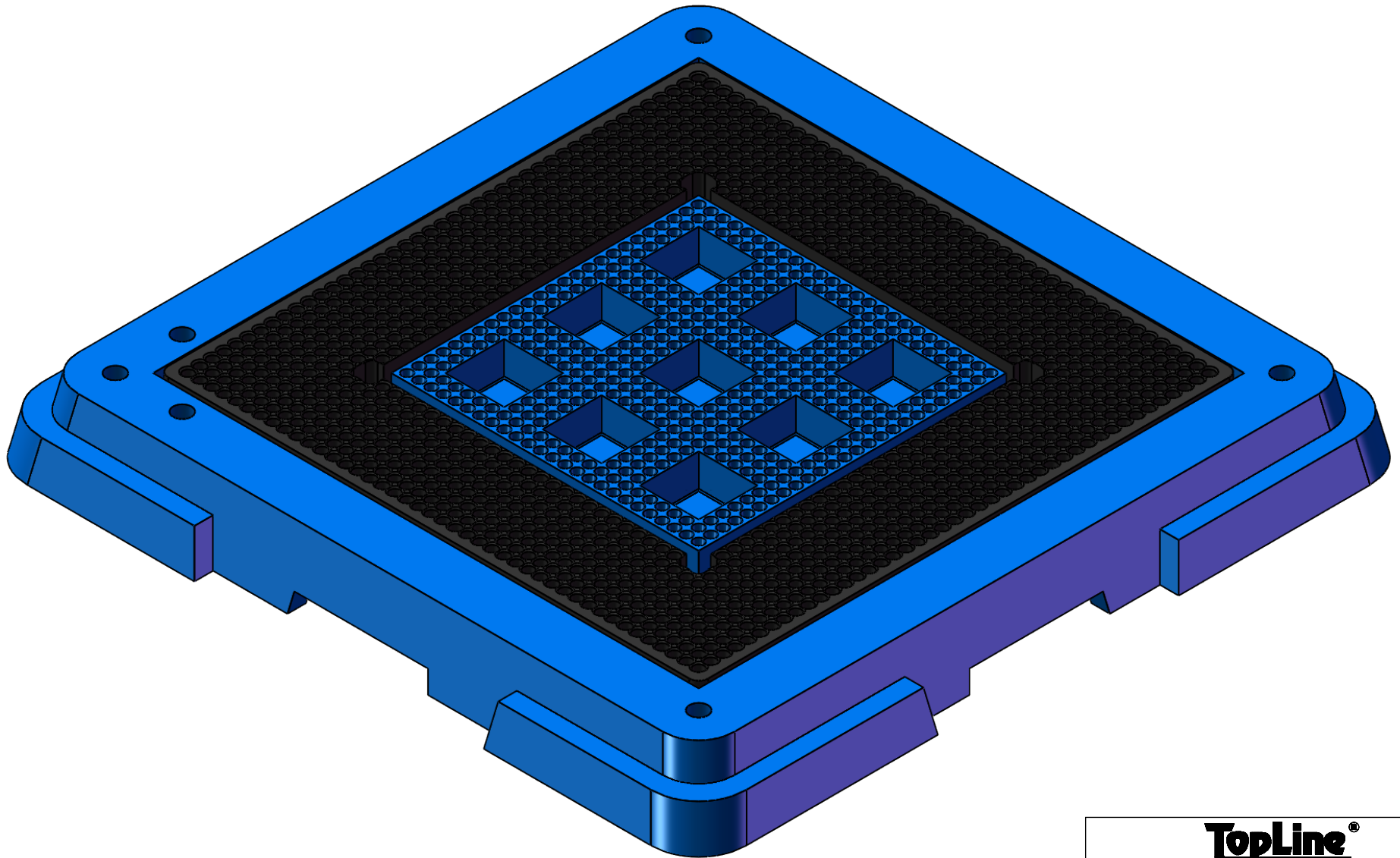
TopLine®

TITLE CCGA1849 TRAY ADAPTER
45mm x 45mm

| | | | |
|--------------|-----------|-----------------------|----------|
| SCALE 2:1 | SIZE A | DRAWING NO. 021433 | REV A |
|--------------|-----------|-----------------------|----------|

DO NOT SCALE DRAWING SHEET 2 OF 4

MODEL ASSEMBLY



TopLine®

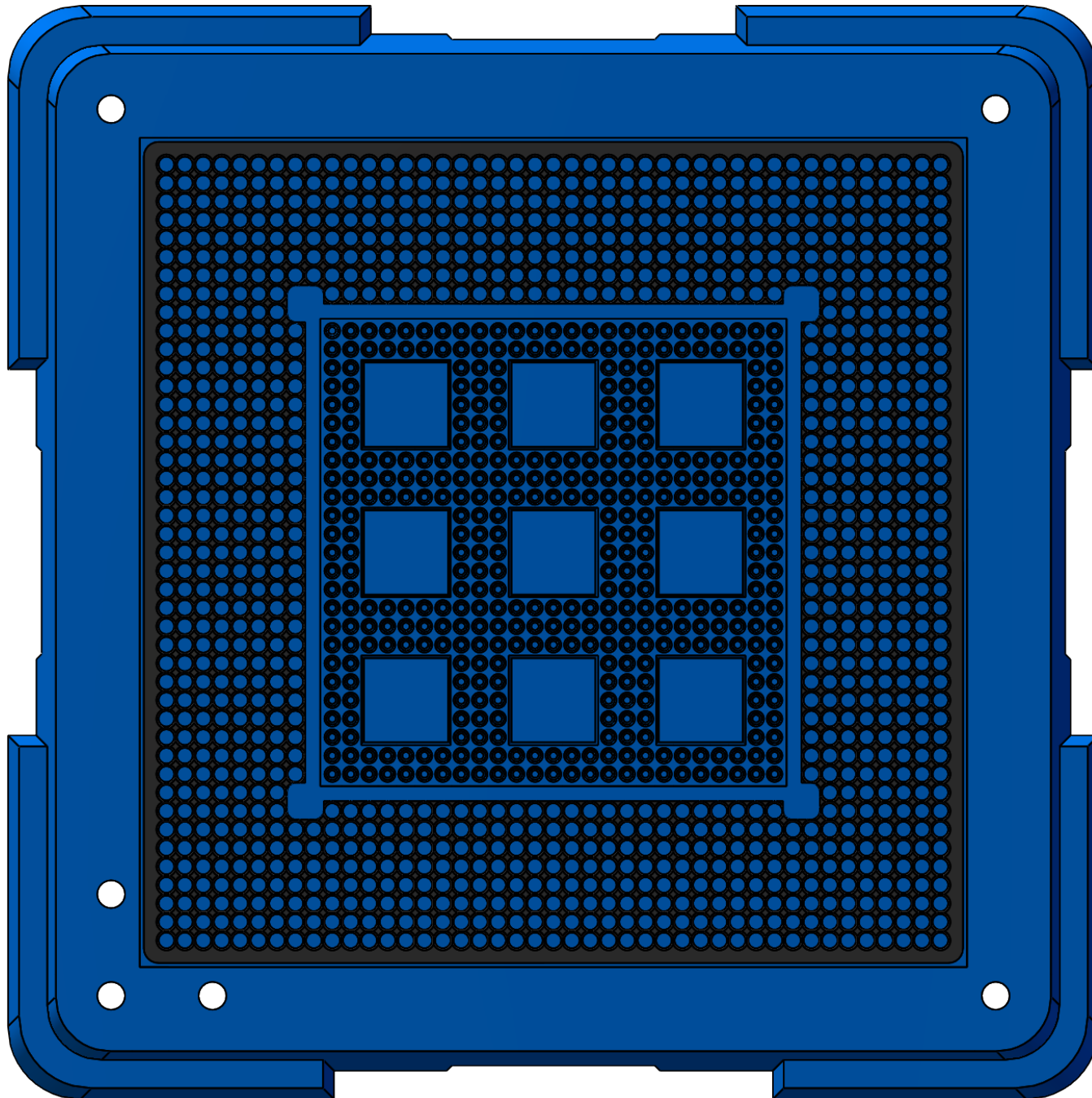
TITLE CCGA1849 TRAY ADAPTER
45mm x 45mm

| | | | |
|--------------|-----------|-----------------------|----------|
| SCALE 3:1 | SIZE A | DRAWING NO. 021433 | REV A |
|--------------|-----------|-----------------------|----------|

DO NOT SCALE DRAWING

SHEET 3 OF 4

MODEL TOP



TopLine[®]

TITLE CCGA1849 TRAY ADAPTER
45mm x 45mm

| SCALE | SIZE | DRAWING NO. | REV |
|-------|------|-------------|-----|
| 3:1 | A | 021433 | A |

DO NOT SCALE DRAWING

SHEET 4 OF 4