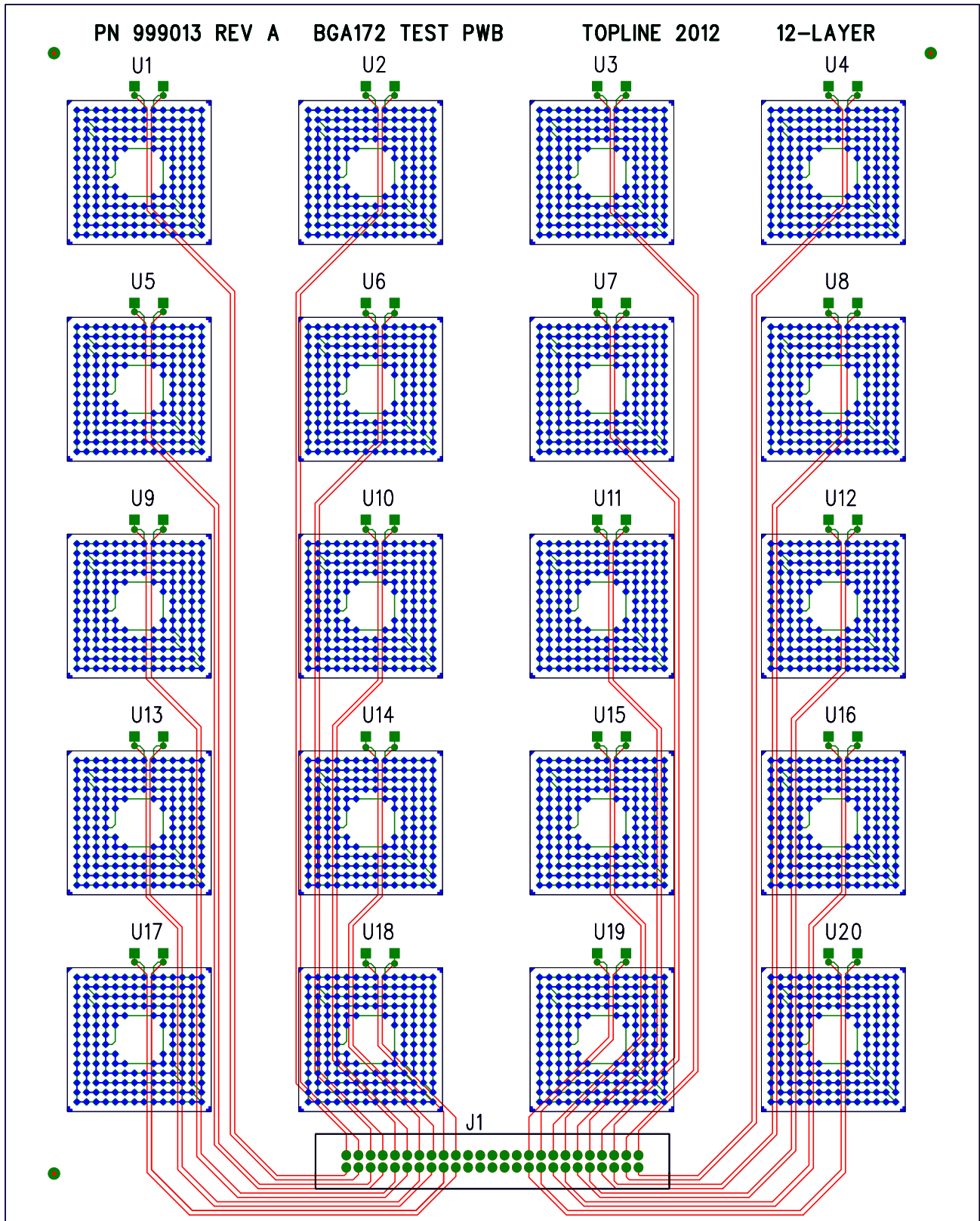


CIRCUIT SCHEMATIC

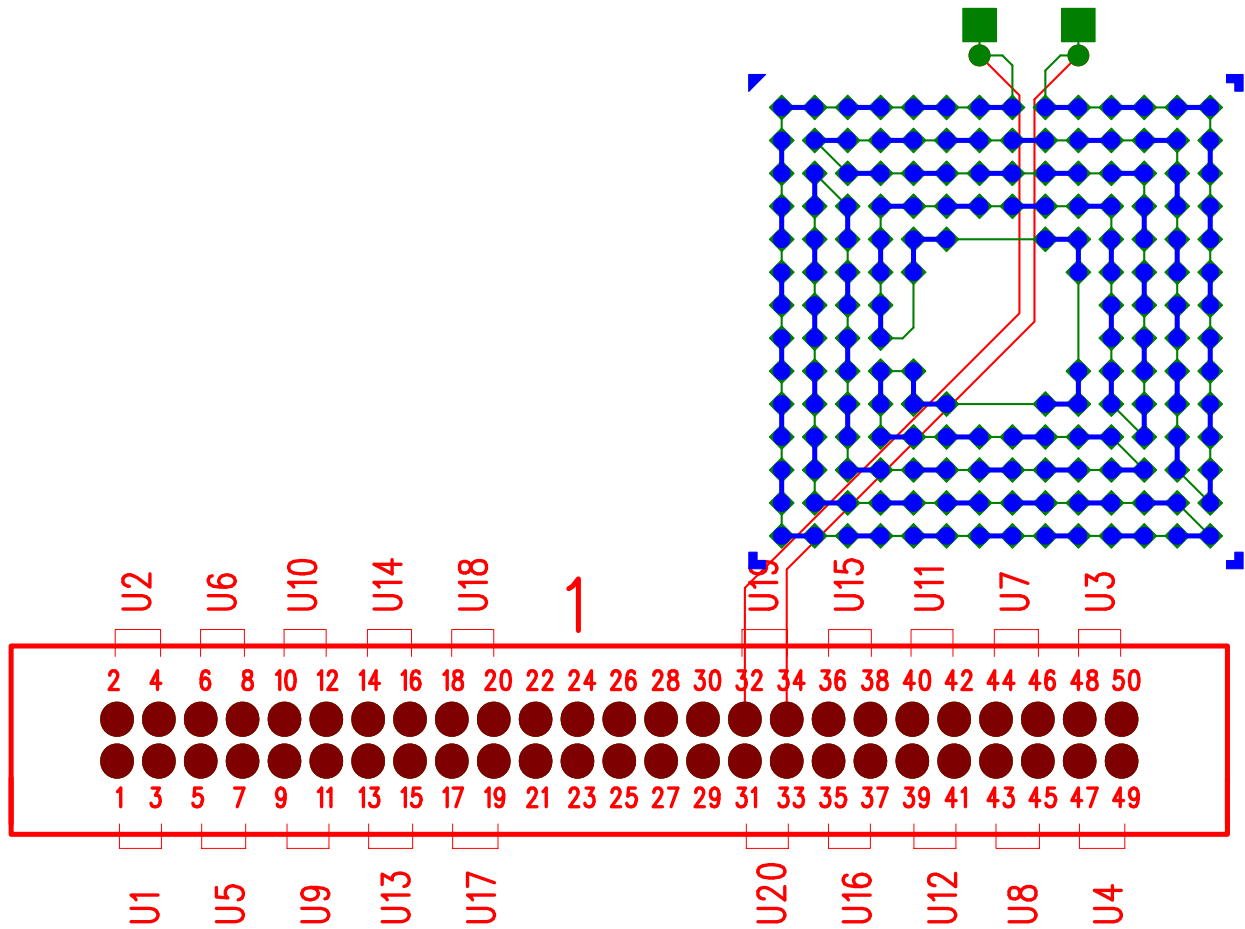


NOTES:

1. SEE U19 DETAIL A SHEET 2

APPROVALS		DATE	TopLine®	
DRAWN	T. AU	10/07/12		
ENGINEER	M. HART	10/07/12	TITLE: PWB ASSEMBLY AFTER MOUNTING BGA172	
CHECKED			SIZE B	DWG NO. 999013
APPROVED			REV A	
ISSUED			SCALE: NOT TO SCALE	
			SHEET 1 OF 3	

DETAIL A CIRCUIT SCHEMATIC



NOTES:

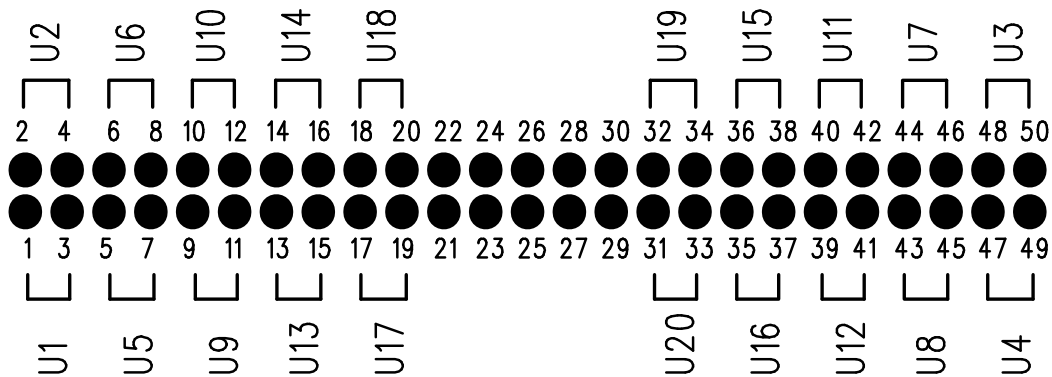
1. CONTINUITY MAP U19 IS REPRESENTATIVE OF U1 TO U20

APPROVALS		DATE	TopLine®	
DRAWN	T. AU	10/07/12		
ENGINEER	M. HART	10/07/12		
CHECKED				
APPROVED			SIZE B DWG NO. 999013	REV A
ISSUED			SCALE: NOT TO SCALE	SHEET 2 OF 3

J1 CONNECTOR PIN OUT

BGA to PIN OUT	
LOCATION	PIN OUT
U1	1-3
U2	2-4
U3	48-50
U4	47-49
U5	5-7
U6	6-8
U7	44-46
U8	43-45
U9	9-11
U10	10-12
U11	40-42
U12	39-41
U13	13-15
U14	14-16
U15	36-38
U16	35-37
U17	17-19
U18	18-20
U19	32-34
U20	31-33
N/C	21-30

PIN OUT to BGA	
PIN OUT	LOCATION
1-3	U1
2-4	U2
5-7	U5
6-8	U6
9-11	U9
10-12	U10
13-15	U13
14-16	U14
17-19	U17
18-20	U18
21-30	N/C
31-33	U20
32-34	U19
35-37	U16
36-38	U15
39-41	U12
40-42	U11
43-45	U8
44-46	U7
47-49	U4
48-50	U3



APPROVALS		DATE	TopLine®	
DRAWN	T. AU	10/07/12		
ENGINEER	M. HART	10/07/12	TITLE: PWB ASSEMBLY AFTER MOUNTING BGA172	
CHECKED			SIZE	REV
APPROVED			B	A
ISSUED			DWG NO. 999013	
			SCALE: NOT TO SCALE	
			SHEET 3 OF 3	