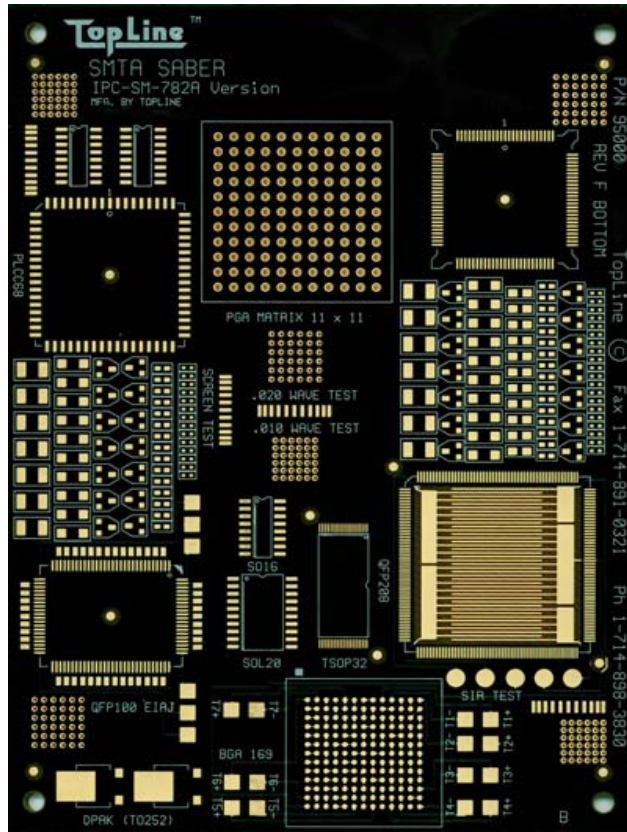




Contact: info@topline.tv (800) 776-9888

HP Saber Alloy Test Kit 4-Layer SABER Board

Bottom Side of Board



Size: 4" x 5.5" (10 x 14cm)

The HP Saber Alloy Test Kit includes Saber PCA and HP required components for qualifying "new" paste alloys as well as the "control" (SAC 305) paste.

Board Features:

- OSP - Entek 106HT
- LPI Solder Mask
- Isola FR406 - FR4 Board .062" (1.6mm)
- 4- Layer Board
- RoHS Compliant
- Tooling Holes .125"
- SMEMA Fiducial Marks

			Kit Order Number - BOM							
See Ref Map Page 5	Description	Parts per board	954817	954818	954819	954820	954821	954822	954823	954824
			Kit of 68	Kit of 72	Kit of 76	Kit of 80	Kit of 84	Kit of 88	Kit of 92	Kit of 96
	Saber Boards		68	72	76	80	84	88	92	96
1,7	SO16 Sn	2	136	144	152	160	168	176	184	192
2	SO16 NiPdAu	1	68	72	76	80	84	88	92	96
3	PLCC68	1	68	72	76	80	84	88	92	96
5	QFP208	1	68	72	76	80	84	88	92	96
6	TSOP32	1	68	72	76	80	84	88	92	96
8	SOL20	1	68	72	76	80	84	88	92	96
10	QFP100	1	68	72	76	80	84	88	92	96
4a, 9a	0402 CHIP	34	2312	2448	2584	2720	2856	2992	3128	3264
4b, 9b	0603 CHIP	31	2108	2232	2356	2480	2604	2728	2852	2976
4c, 9c	0805 CHIP	11	748	792	836	880	924	968	1012	1056
4d, 9d	1206 CHIP	20	1360	1440	1520	1600	1680	1760	1840	1920
4e, 9e	1210 CHIP	14	952	1008	1064	1120	1176	1232	1288	1344
4f, 9f	SOT23	28	1904	2016	2128	2240	2352	2464	2576	2688

More kits next page



Contact: info@topline.tv (800) 776-9888

HP Saber Alloy Test Kit 4-Layer SABER Board

			Kit Order Number - BOM							
See Ref Map Page 5	Description	Parts per board	954825	954826	954827	954828	954829	954830	954831	954832
			Kit of 100	Kit of 104	Kit of 108	Kit of 112	Kit of 116	Kit of 120	Kit of 124	Kit of 128
	Saber Boards		100	104	108	112	116	120	124	128
1,7	SO16 Sn	2	200	208	216	224	232	240	248	256
2	SO16 NiPdAu	1	100	104	108	112	116	120	124	128
3	PLCC68	1	100	104	108	112	116	120	124	128
5	QFP208	1	100	104	108	112	116	120	124	128
6	TSOP32	1	100	104	108	112	116	120	124	128
8	SOL20	1	100	104	108	112	116	120	124	128
10	QFP100	1	100	104	108	112	116	120	124	128
4a, 9a	0402 CHIP	34	3400	3536	3672	3808	3944	4080	4216	4352
4b, 9b	0603 CHIP	31	3100	3224	3348	3472	3596	3720	3844	3968
4c, 9c	0805 CHIP	11	1100	1144	1188	1232	1276	1320	1364	1408
4d, 9d	1206 CHIP	20	2000	2080	2160	2240	2320	2400	2480	2560
4e, 9e	1210 CHIP	14	1400	1456	1512	1568	1624	1680	1736	1792
4f, 9f	SOT23	28	2800	2912	3024	3136	3248	3360	3472	3584

			Kit Order Number - BOM							
See Ref Map Page 5	Description	Parts per board	954833	954834	954835	954836	954837	954838	954839	954840
			Kit of 132	Kit of 136	Kit of 140	Kit of 144	Kit of 148	Kit of 152	Kit of 156	Kit of 160
	Saber Boards		132	136	140	144	148	152	156	160
1,7	SO16 Sn	2	264	272	280	288	296	304	312	320
2	SO16 NiPdAu	1	132	136	140	144	148	152	156	160
10	QFP100	1	132	136	140	144	148	152	156	160
3	PLCC68	1	132	136	140	144	148	152	156	160
5	QFP208	1	132	136	140	144	148	152	156	160
6	TSOP32	1	132	136	140	144	148	152	156	160
8	SOL20	1	132	136	140	144	148	152	156	160
4a, 9a	0402 CHIP	34	4488	4624	4760	4896	5032	5168	5304	5440
4b, 9b	0603 CHIP	31	4092	4216	4340	4464	4588	4712	4836	4960
4c, 9c	0805 CHIP	11	1452	1496	1540	1584	1628	1672	1716	1760
4d, 9d	1206 CHIP	20	2640	2720	2800	2880	2960	3040	3120	3200
4e, 9e	1210 CHIP	14	1848	1904	1960	2016	2072	2128	2184	2240
4f, 9f	SOT23	28	3696	3808	3920	4032	4144	4256	4368	4480

More kits next page



Contact: info@topline.tv (800) 776-9888

HP Saber Alloy Test Kit 4-Layer SABER Board

			Kit Order Number - BOM							
See Ref Map Page 5	Description	Parts per board	954841	954842	954843	954844	954845	954846	954847	954848
			Kit of 164	Kit of 168	Kit of 172	Kit of 176	Kit of 180	Kit of 184	Kit of 188	Kit of 192
	Saber Boards		164	168	172	176	180	184	188	192
1,7	SO16 Sn	2	328	336	344	352	360	368	376	384
2	SO16 NiPdAu	1	164	168	172	176	180	184	188	192
10	QFP100	1	164	168	172	176	180	184	188	192
3	PLCC68	1	164	168	172	176	180	184	188	192
5	QFP208	1	164	168	172	176	180	184	188	192
6	TSOP32	1	164	168	172	176	180	184	188	192
8	SOL20	1	164	168	172	176	180	184	188	192
4a, 9a	0402 CHIP	34	5576	5712	5848	5984	6120	6256	6392	6528
4b, 9b	0603 CHIP	31	5084	5208	5332	5456	5580	5704	5828	5952
4c, 9c	0805 CHIP	11	1804	1848	1892	1936	1980	2024	2068	2112
4d, 9d	1206 CHIP	20	3280	3360	3440	3520	3600	3680	3760	3840
4e, 9e	1210 CHIP	14	2296	2352	2408	2464	2520	2576	2632	2688
4f, 9f	SOT23	28	4592	4704	4816	4928	5040	5152	5264	5376

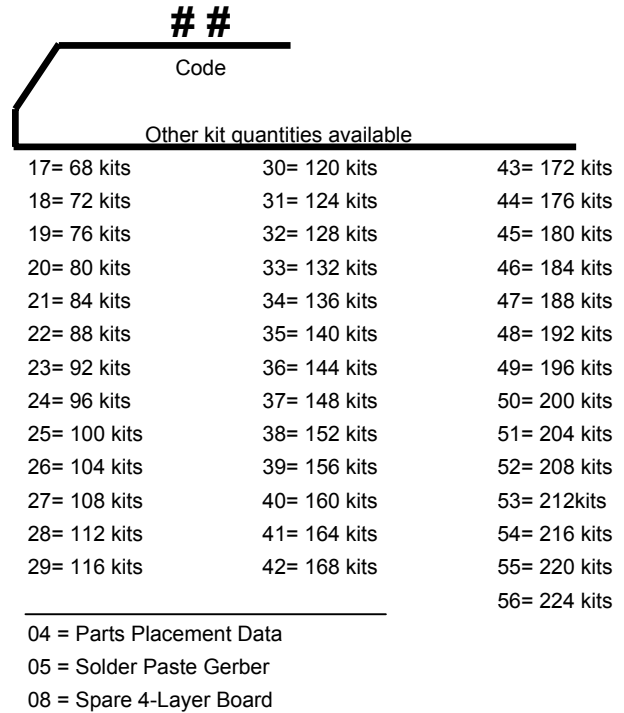
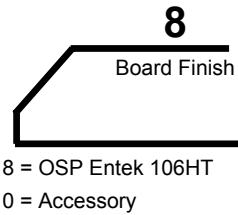
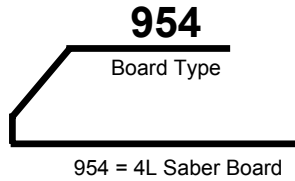
			Kit Order Number - BOM							
See Ref Map Page 5	Description	Parts per board	954849	954850	954851	954852	954853	954854	954855	954856
			Kit of 196	Kit of 200	Kit of 204	Kit of 208	Kit of 212	Kit of 216	Kit of 220	Kit of 224
	Saber Boards		196	200	204	208	212	216	220	224
1,7	SO16 Sn	2	392	400	408	416	424	432	440	448
2	SO16 NiPdAu	1	196	200	204	208	212	216	220	224
10	QFP100	1	196	200	204	208	212	216	220	224
3	PLCC68	1	196	200	204	208	212	216	220	224
5	QFP208	1	196	200	204	208	212	216	220	224
6	TSOP32	1	196	200	204	208	212	216	220	224
8	SOL20	1	196	200	204	208	212	216	220	224
4a, 9a	0402 CHIP	34	6664	6800	6936	7072	7208	7344	7480	7616
4b, 9b	0603 CHIP	31	6076	6200	6324	6448	6572	6696	6820	6944
4c, 9c	0805 CHIP	11	2156	2200	2244	2288	2332	2376	2420	2464
4d, 9d	1206 CHIP	20	3920	4000	4080	4160	4240	4320	4400	4480
4e, 9e	1210 CHIP	14	2744	2800	2856	2912	2968	3024	3080	3136
4f, 9f	SOT23	28	5488	5600	5712	5824	5936	6048	6160	6272

Contact TopLine for higher quantity kits



HP Saber Alloy Test Kit 4-Layer SABER Board

Kit Order Number System



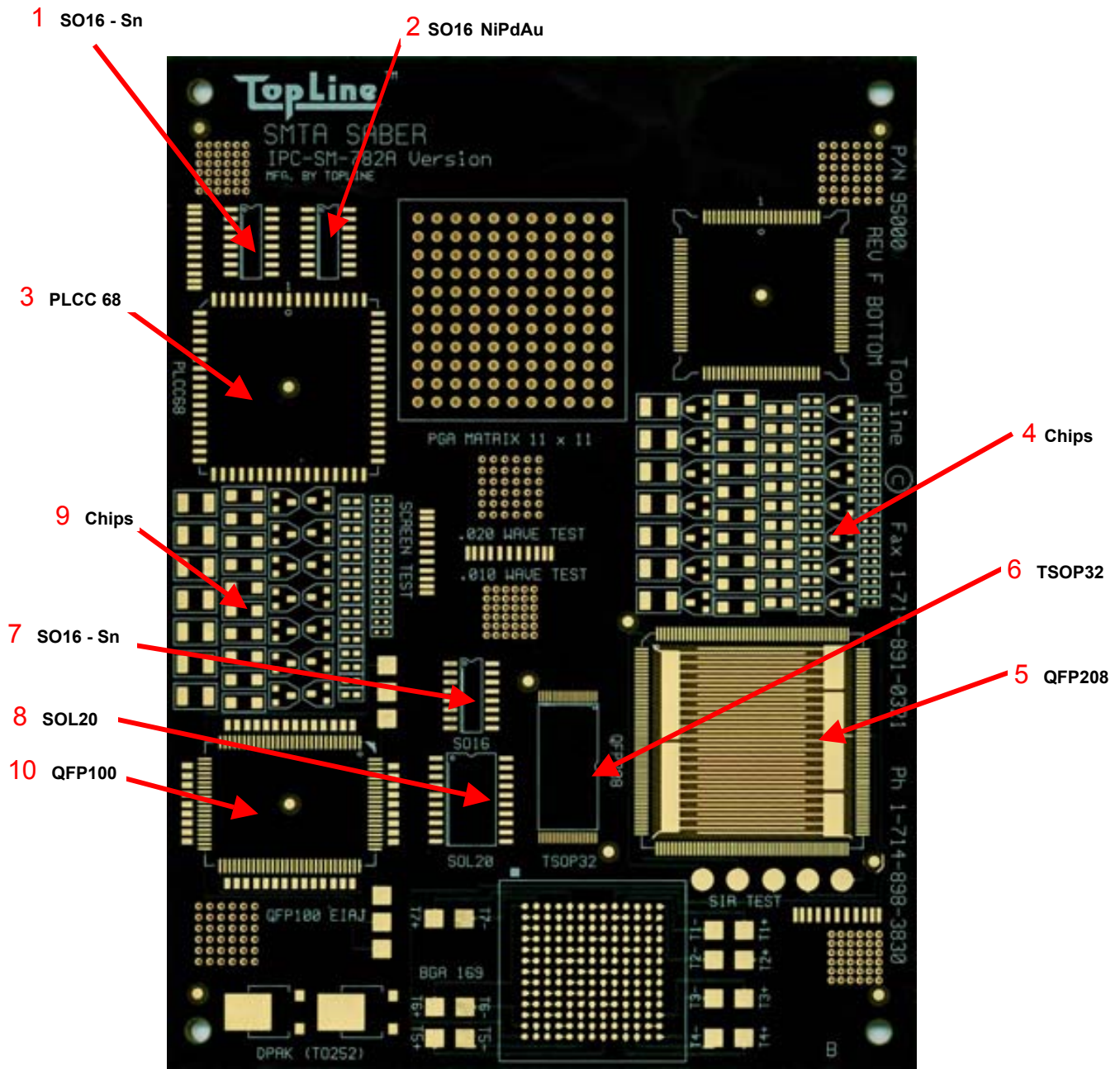
Spare Boards

<u>Board Description</u>	<u>Quantity</u>	<u>Order Number</u>
4-Layer Board	1	954008



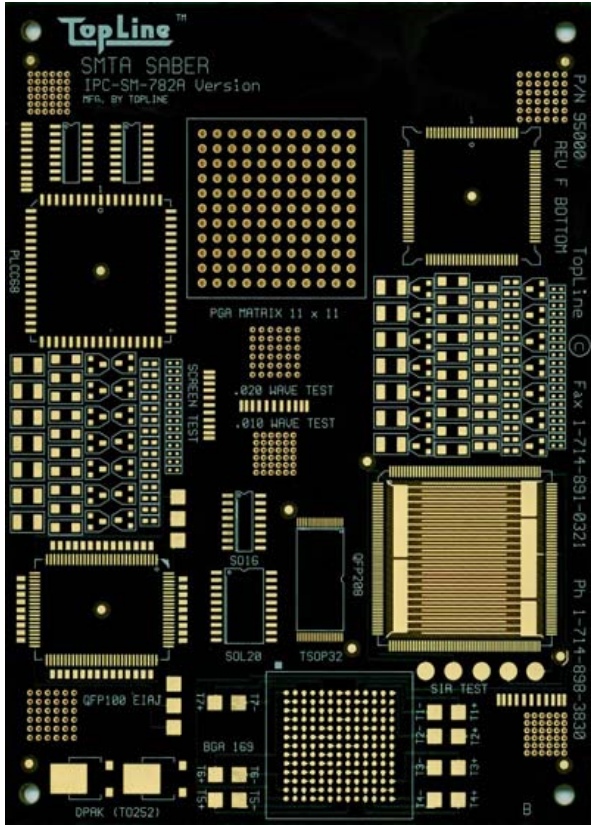
TopLine Corporation
 95 GA Highway 22 W.
 Milledgeville, GA 31061 USA
 Tel: 1-800-776-9888
 email: info@topline.tv

Components Placement Reference Map
Bottom Side of Board

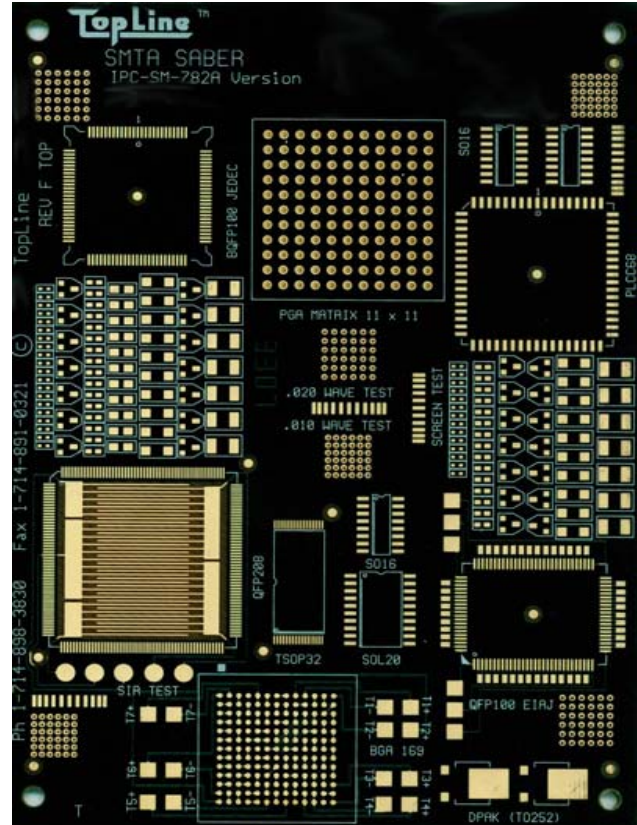


Download free solder paste gerbers and parts placement data.
 Step 1: Go to <http://www.topline.tv/drawings/login.cfm>
 Step 2: Click link " [Gerber FILES](#) "
 Step 3: Click link " [954008f](#) " HP Saber Alloy Test Kit (1-up board)

Bottom Side of Board



Top Side of Board



TopLine Corporation

95 GA Highway 22 W.
Milledgeville, GA 31061 USA

Tel: 1-800-776-9888
email: info@topline.tv