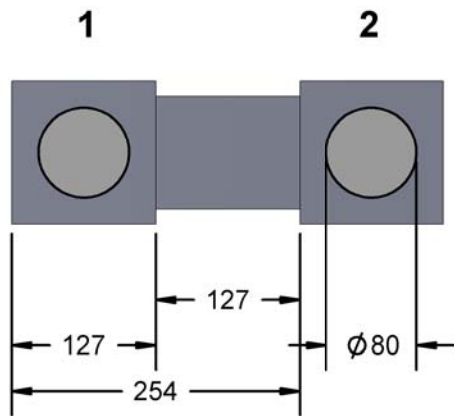
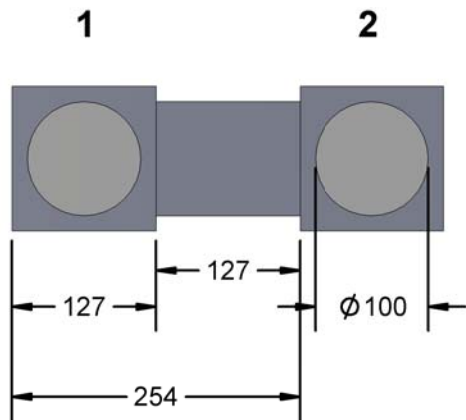


WIRE BONDING PAD

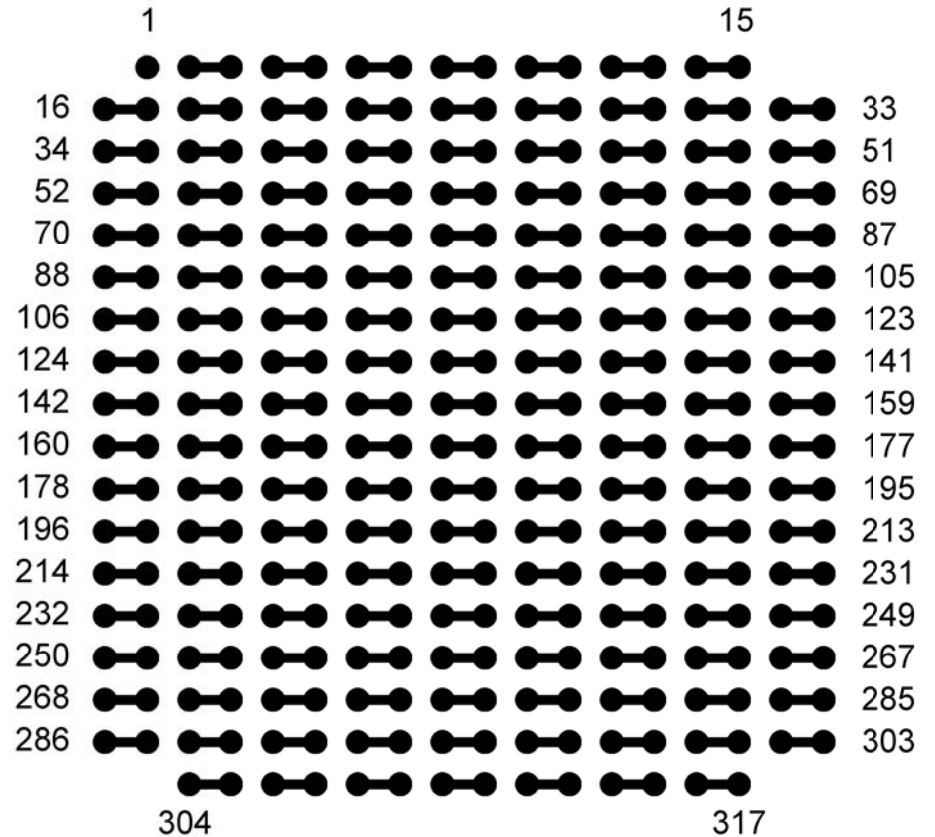
DETAIL 1



DETAIL 2



DAISY CHAIN PATTERN PAD VIEW



NOTES:

- 1) DIMENSIONS IN MICRONS (μm) OR AS SPECIFIED.
- 2) THICKNESS: 635 μm (OTHER AVAILABLE).
- 3) PASSIVATION: NITRIDE 17KA THICKNESS (1.7 μm).
- 4) PACKAGING: STANDARD WAFFLE PACK (TRAY).
- 5) PAD METAL THICKNESS: 10KA (1.0 μm)

PART NUMBER TABLE

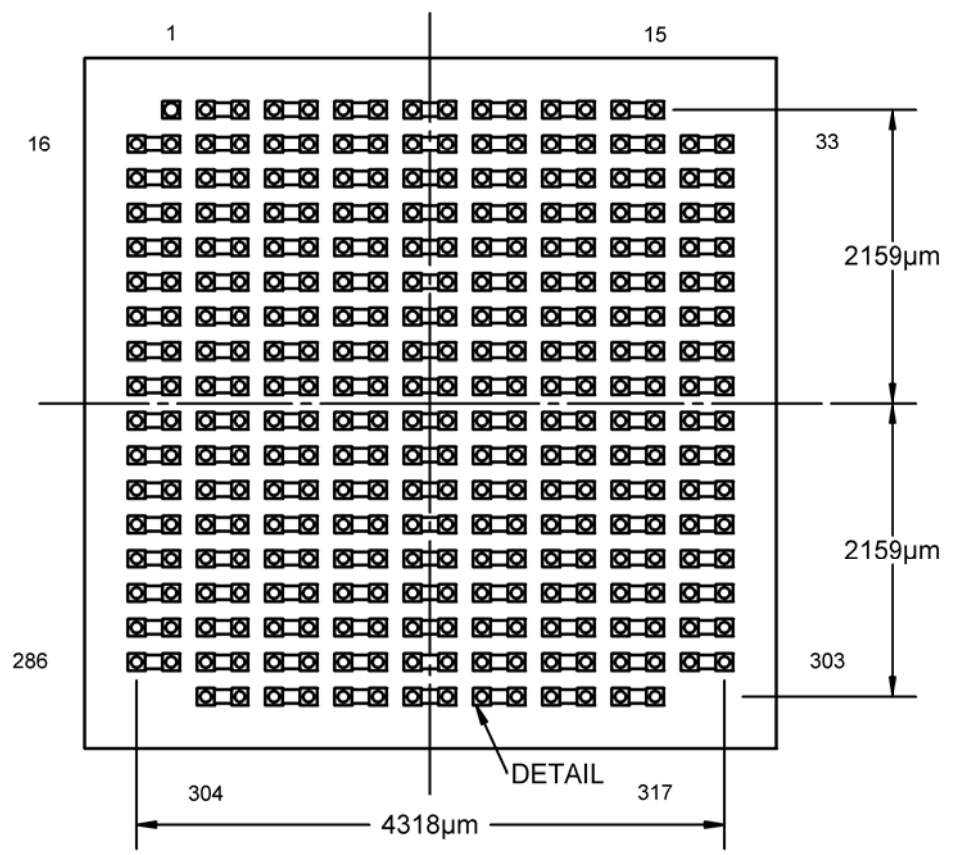
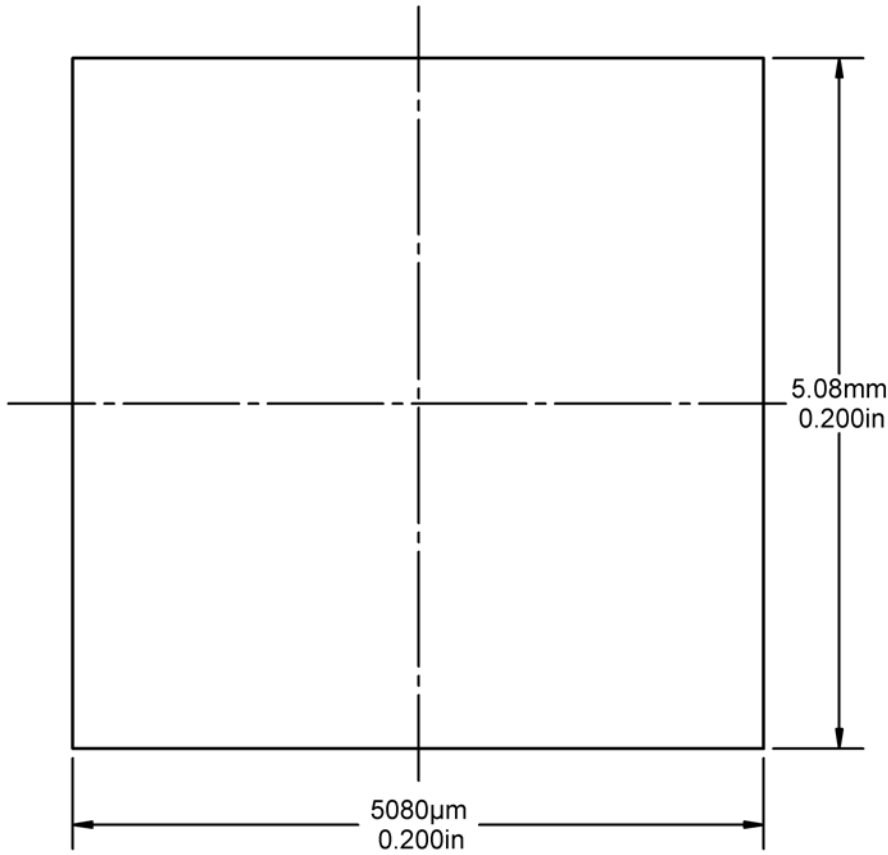
PART NUMBER	DIE SIZE	DIE PER WAFER	BOND SITE	DETAIL
FCN317K5A254-DC	5.08mm	340	$\phi 80$	1
FCN317G5A254-DC	5.08mm	340	$\phi 100$	2

APPROVALS	DATE	TopLine [®]			
DRAWN T. AU	04/26/2018				
ENG M. HART	04/26/2018	SCALE	SIZE	DRAWING NO.	REV
MFG		150:1	A	631890	A
QA		DO NOT SCALE DRAWING			SHEET 1 OF 7
CUST					
REVISED					

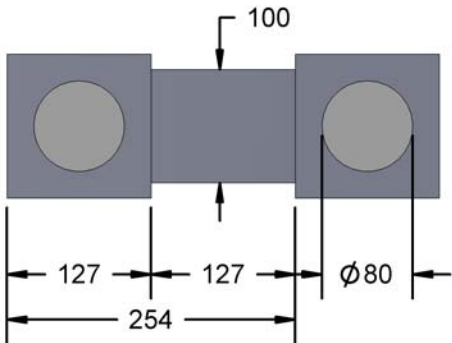
OUTLINE DIMENSIONS

BACK SIDE

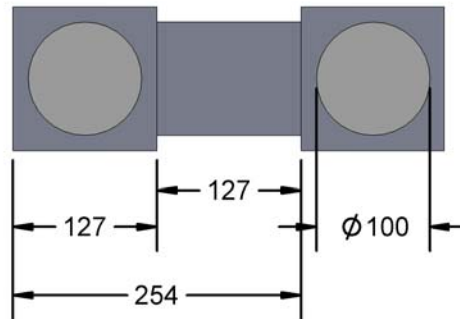
PAD SIDE



DETAIL 1



DETAIL 2



TopLine[®]

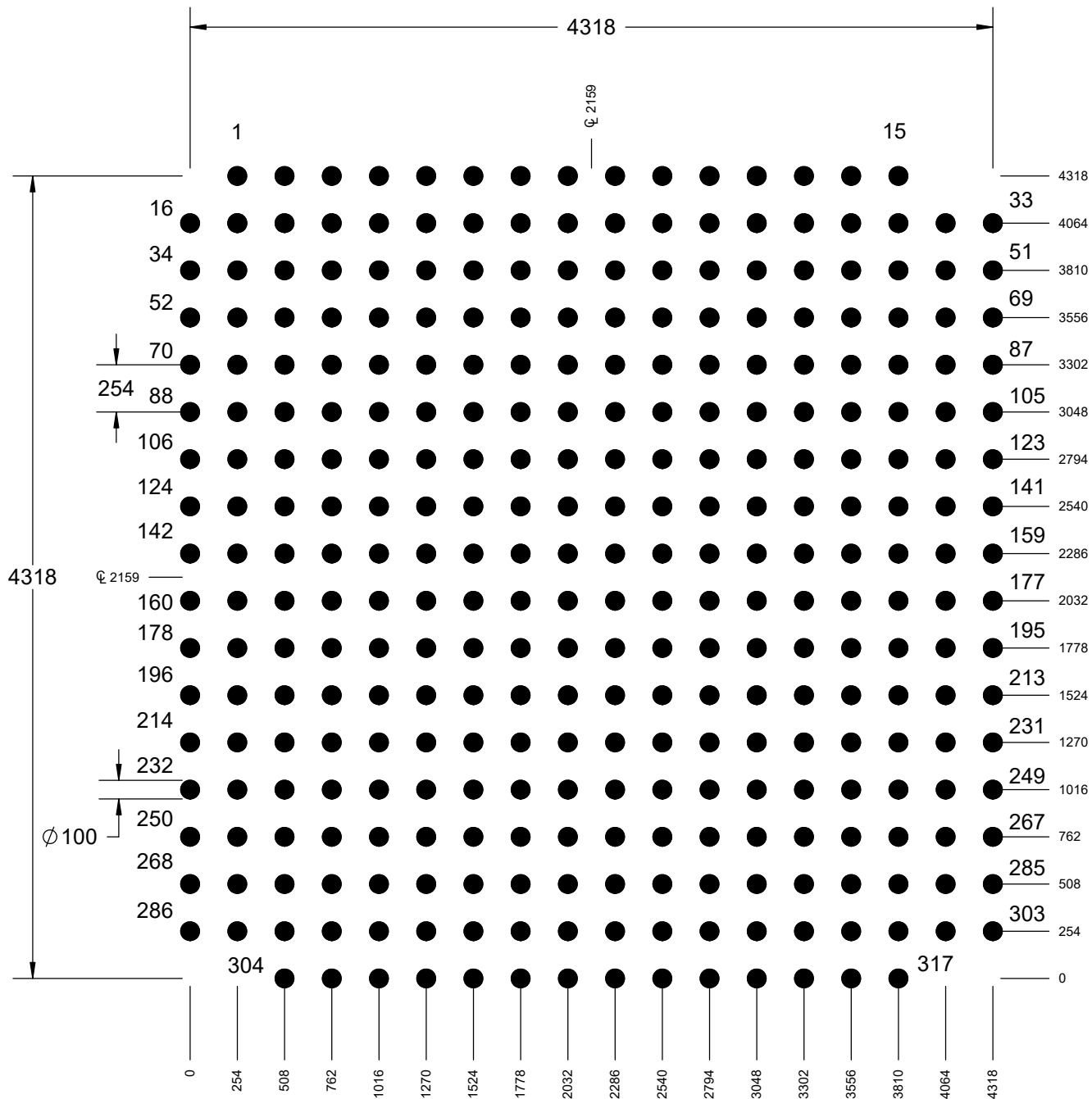
TITLE FCN317 - 254UM PITCH
DAISY CHAIN DIE

SCALE 150:1	SIZE A	DRAWING NO. 631890	REV A
----------------	-----------	-----------------------	----------

DO NOT SCALE DRAWING

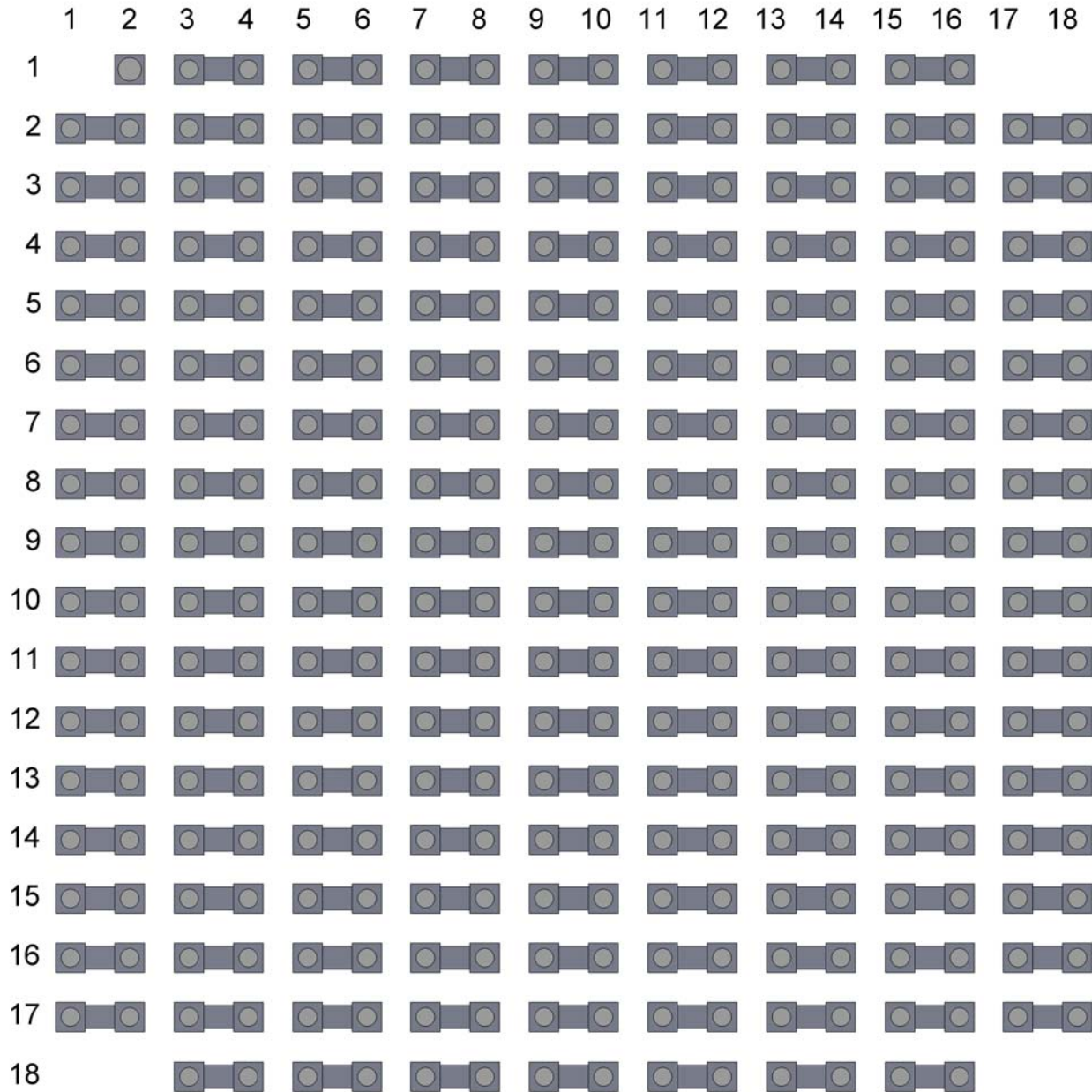
SHEET 2 OF 7

PAD LOCATION DIMENSION IN MICRON (UM)



TopLine®			
TITLE FCN317 - 254UM PITCH DAISY CHAIN DIE			
SCALE 30:1	SIZE A	DRAWING NO. 631890	REV A
DO NOT SCALE DRAWING			SHEET 3 OF 7

BONDING MAP SEE NET LIST (PAGE 5 AND 6)



TopLine[®]			
TITLE FCN317 - 254UM PITCH DAISY CHAIN DIE			
SCALE 35:1	SIZE A	DRAWING NO. 631890	REV A
DO NOT SCALE DRAWING		SHEET 4 OF 7	

FCN317 NET LIST

PIN#	X	Y
1	-1905	2159
2	-1651	2159
3	-1397	2159
4	-1143	2159
5	-889	2159
6	-635	2159
7	-381	2159
8	-127	2159
9	127	2159
10	381	2159
11	635	2159
12	889	2159
13	1143	2159
14	1397	2159
15	1651	2159
16	-2159	1905
17	-1905	1905
18	-1651	1905
19	-1397	1905
20	-1143	1905
21	-889	1905
22	-635	1905
23	-381	1905
24	-127	1905
25	127	1905
26	381	1905
27	635	1905
28	889	1905
29	1143	1905
30	1397	1905
31	1651	1905
32	1905	1905
33	2159	1905
34	-2159	1651
35	-1905	1651
36	-1651	1651
37	-1397	1651
38	-1143	1651
39	-889	1651
40	-635	1651
41	-381	1651
42	-127	1651
43	127	1651
44	381	1651
45	635	1651

PIN#	X	Y
46	889	1651
47	1143	1651
48	1397	1651
49	1651	1651
50	1905	1651
51	2159	1651
52	-2159	1397
53	-1905	1397
54	-1651	1397
55	-1397	1397
56	-1143	1397
57	-889	1397
58	-635	1397
59	-381	1397
60	-127	1397
61	127	1397
62	381	1397
63	635	1397
64	889	1397
65	1143	1397
66	1397	1397
67	1651	1397
68	1905	1397
69	2159	1397
70	-2159	1143
71	-1905	1143
72	-1651	1143
73	-1397	1143
74	-1143	1143
75	-889	1143
76	-635	1143
77	-381	1143
78	-127	1143
79	127	1143
80	381	1143
81	635	1143
82	889	1143
83	1143	1143
84	1397	1143
85	1651	1143
86	1905	1143
87	2159	1143
88	-2159	889
89	-1905	889
90	-1651	889

PIN#	X	Y
91	-1397	889
92	-1143	889
93	-889	889
94	-635	889
95	-381	889
96	-127	889
97	127	889
98	381	889
99	635	889
100	889	889
101	1143	889
102	1397	889
103	1651	889
104	1905	889
105	2159	889
106	-2159	635
107	-1905	635
108	-1651	635
109	-1397	635
110	-1143	635
111	-889	635
112	-635	635
113	-381	635
114	-127	635
115	127	635
116	381	635
117	635	635
118	889	635
119	1143	635
120	1397	635
121	1651	635
122	1905	635
123	2159	635
124	-2159	381
125	-1905	381
126	-1651	381
127	-1397	381
128	-1143	381
129	-889	381
130	-635	381
131	-381	381
132	-127	381
133	127	381
134	381	381
135	635	381
136	889	381
137	1143	381
138	1397	381
139	381	1651

PIN#	X	Y
140	1905	381
141	-2159	381
142	-2159	127
143	-1905	127
144	-1651	127
145	-1397	127
146	-1143	127
147	-889	127
148	-635	127
149	-381	127
150	-127	127
151	127	127
152	381	127
153	635	127
154	889	127
155	1143	127
156	1397	127
157	1651	127
158	1905	127
159	2159	127
160	-2159	-127
161	-1905	-127
162	-1651	-127
163	-1397	-127
164	-1143	-127
165	-889	-127
166	-635	-127
167	-381	-127
168	-127	-127
169	127	-127
170	381	-127
171	635	-127
172	889	-127
173	1143	-127
174	1397	-127
175	1651	-127
176	1905	-127
177	2159	-127
178	-2159	-381
179	-1905	-381
180	-1651	-381
181	-1397	-381
182	-1143	-381
183	-889	-381
184	-635	-381
185	-381	-381
186	-127	-381
187	127	-381
188	381	-381

CONTINUE ON PAGE 6

NOTES:

- 1) DIMENSIONS IN MICRON (UM).
- 2) X = 0, Y = 0 IS CENTER OF DIE.

TopLine®			
TITLE FCN317 - 254UM PITCH DAISY CHAIN DIE			
SCALE	SIZE	DRAWING NO.	REV
NONE	A	631890	A
DO NOT SCALE DRAWING			SHEET 5 OF 7

FCN317 NET LIST

PIN#	X	Y
189	635	-381
190	889	-381
191	1143	-381
192	1397	-381
193	1651	-381
194	1905	-381
195	2159	-381
196	-2159	-635
197	-1905	-635
198	-1651	-635
199	-1397	-635
200	-1143	-635
201	-889	-635
202	-635	-635
203	-381	-635
204	-127	-635
205	127	-635
206	381	-635
207	635	-635
208	889	-635
209	1143	-635
210	1397	-635
211	1651	-635
212	1905	-635
213	2159	-635
214	-2159	-889
215	-1905	-889
216	-1651	-889
217	-1397	-889
218	-1143	-889
219	-889	-889
220	-635	-889
221	-381	-889
222	-127	-889
223	127	-889
224	381	-889
225	635	-889
226	889	-889
227	1143	-889
228	1397	-889
229	1651	-889
230	1905	-889
231	2159	-889
232	-2159	-1143
233	-1905	-1143
234	-1651	-1143
235	-1397	-1143
236	-1143	-1143
237	-889	-1143

PIN#	X	Y
238	-635	-1143
239	-381	-1143
240	-127	-1143
241	127	-1143
242	381	-1143
243	635	-1143
244	889	-1143
245	1143	-1143
246	1397	-1143
247	1651	-1143
248	1905	-1143
249	2159	-1143
250	-2159	-1397
251	-1905	-1397
252	-1651	-1397
253	-1397	-1397
254	-1143	-1397
255	-889	-1397
256	-635	-1397
257	-381	-1397
258	-127	-1397
259	127	-1397
260	381	-1397
261	635	-1397
262	889	-1397
263	1143	-1397
264	1397	-1397
265	1651	-1397
266	1905	-1397
267	2159	-1397
268	-2159	-1651
269	-1905	-1651
270	-1651	-1651
271	-1397	-1651
272	-1143	-1651
273	-889	-1651
274	-635	-1651
275	-381	-1651
276	-127	-1651
277	127	-1651
278	381	-1651
279	635	-1651
280	889	-1651
281	1143	-1651
282	1397	-1651
283	1651	-1651
284	1905	-1651
285	2159	-1651
286	-2159	-1905

PIN#	X	Y
287	-1905	-1905
288	-1651	-1905
289	-1397	-1905
290	-1143	-1905
291	-889	-1905
292	-635	-1905
293	-381	-1905
294	-127	-1905
295	127	-1905
296	381	-1905
297	635	-1905
298	889	-1905
299	1143	-1905
300	1397	-1905
301	1651	-1905
302	1905	-1905
303	2159	-1905
304	-1651	-2159
305	-1397	-2159
306	-1143	-2159
307	-889	-2159
308	-635	-2159
309	-381	-2159
310	-127	-2159
311	127	-2159
312	381	-2159
313	635	-2159
314	889	-2159
315	1143	-2159
316	1397	-2159
317	1651	-2159

NOTES:

- 1) DIMENSIONS IN MICRON (UM).
- 2) X = 0, Y = 0 IS CENTER OF DIE.



TITLE			
FCN317 - 254UM PITCH DAISY CHAIN DIE			
SCALE	SIZE	DRAWING NO.	REV
NONE	A	631890	A
DO NOT SCALE DRAWING			SHEET 6 OF 7

PART NUMBERING SYSTEM

FCN

317

K

5

A

254

- OPTION

- DC

- PACKING

BONDING DIE

FCN = SINGLE DIE
 FCWN = UNSAWN WAFER
 5" (125mm)

NBR BOND PADS

PADS	DIE ARRAY	SIZE
317	1X	5MM
1268	4X	10MM
2853	9X	15MM
5070	16X	20MM

PAD

K = ϕ 80 μ M
 G = ϕ 100 μ M

DIE SIZE

CODE	MM	MIL
5	5.08	200
10	10.16	400
15	15.24	600
20	20.32	800

PAD MATERIAL

A = Al98, Si1.0 Cu1.0

BUMP PITCH

μ M

OPTIONS

CODE	DIE THINNING	
	μ M	INCH
NONE	635 μ M	.025"
BG530	530 μ M	.021"
BG430	430 μ M	.017"
BG360	360 μ M	.014"
BG250	250 μ M	.010"
BG200	200 μ M	.008"
BG150	150 μ M	.006"
BG100	100 μ M	.004"

OTHER THICKNESS AVAILABLE

DAISY CHAIN

PACKAGING

BLANK = TRAY (STANDARD)

SIZE	TRAY	QTY
5MM	2-INCH	36 PCS
10MM	4-INCH	49 PCS
15MM	4-INCH	25 PCS
20MM	4-INCH	9 PCS



TITLE FCN317 - 254UM PITCH
 DAISY CHAIN DIE

SCALE	SIZE	DRAWING NO.	REV
10:1	A	631890	

DO NOT SCALE DRAWING

SHEET 7 OF 7