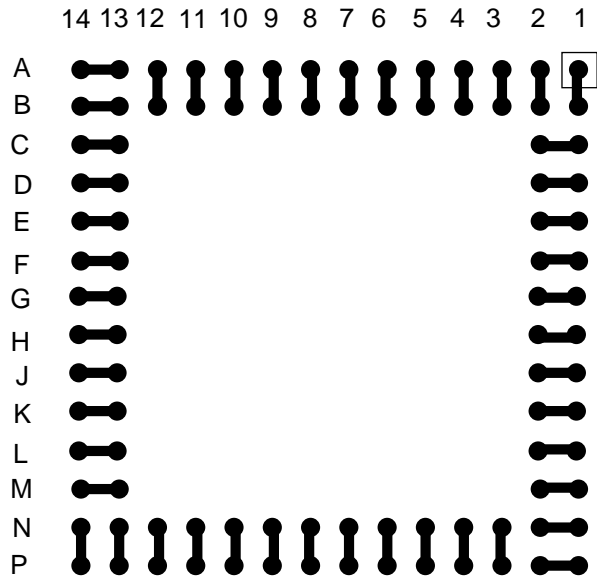
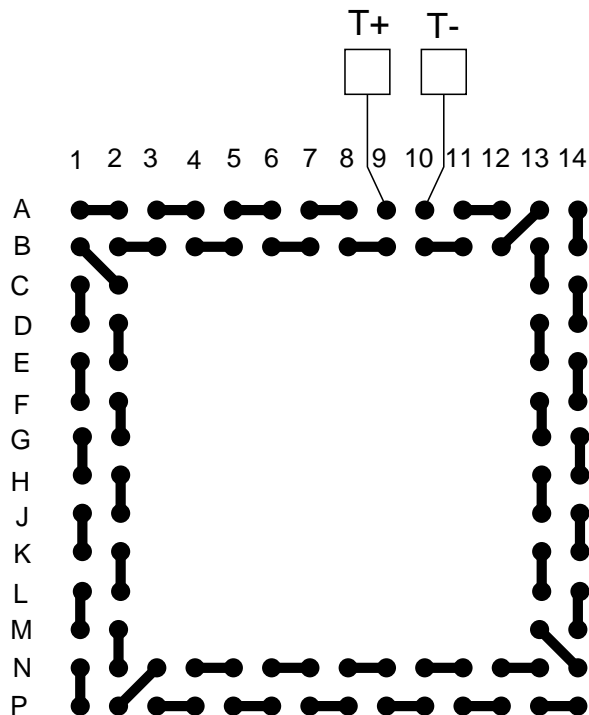
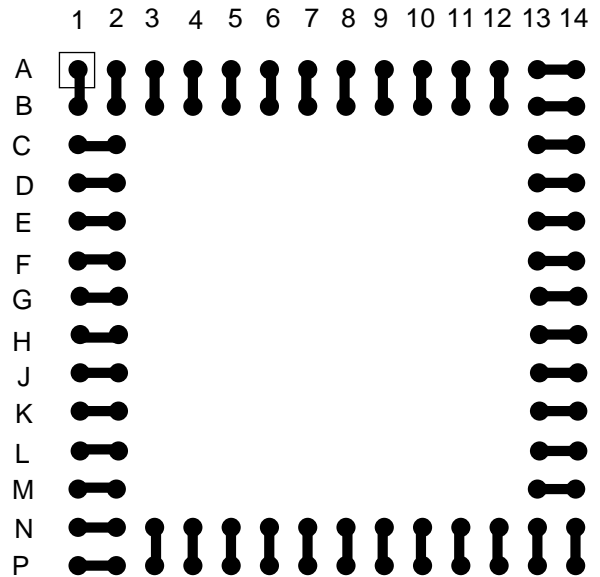


<u>BALLS</u>	<u>PITCH</u>	<u>SIZE</u>	<u>MATRIX</u>	<u>ROWS</u>	<u>CENTER</u>	<u>MAT'L</u>
96	0.5mm	8mm SQ	14 x 14	2	none	Flex Polyimide

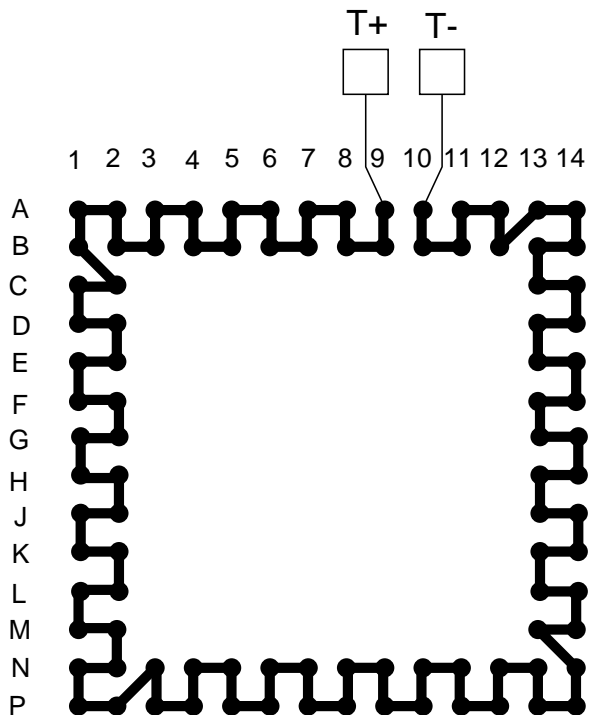
BALL VIEW



BOTTOM SIDE (TOP X-RAY VIEW)



TEST VEHICLE BOARD



AFTER MOUNTING TO TEST BOARD

fBGA96T.5C-DC144

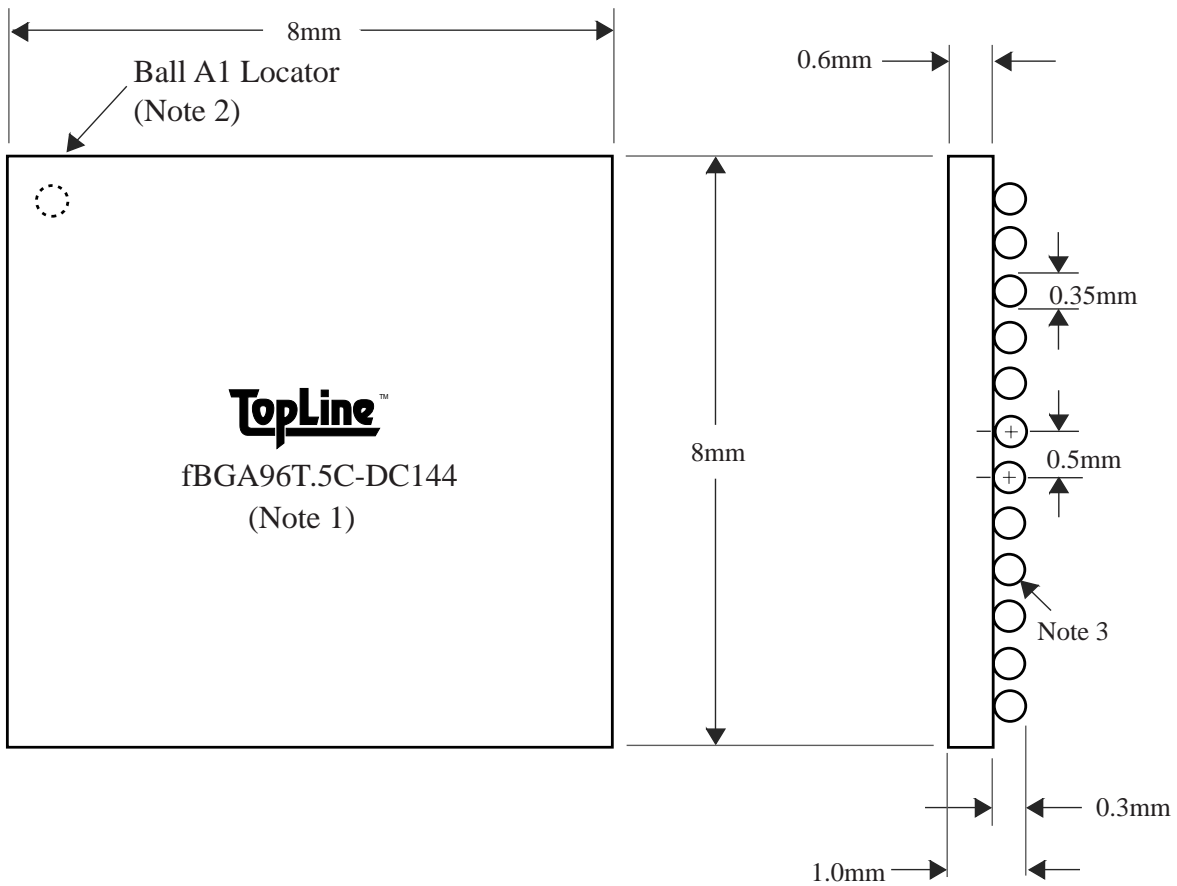


TEL 1-714-898-3830
info@topline.tv

<u>BALLS</u>	<u>PITCH</u>	<u>SIZE</u>	<u>MATRIX</u>	<u>ROWS</u>	<u>CENTER</u>	<u>MAT'L</u>
96	0.5mm	8mm SQ	14 x 14	2	none	Flex Polyimide

TOP VIEW

SIDE VIEW



NOTES		REVISIONS		
Note 1	Logo and part number centered White ink on black solder mask	<u>Rev</u>	<u>Date</u>	<u>Changes</u>
Note 2	Ball A1 locator mark positioned in corner			
Note 3	Ball Material: Sn95.5/Ag4.0/Cu0.5			
Note 4	Substrate Material: Flex Polyimide			
Note 5	Daisy Chain by internal wire bonding			
		PACKAGING TRAYS		
		Tray BGATRAY8mm Tray Quantity 360		