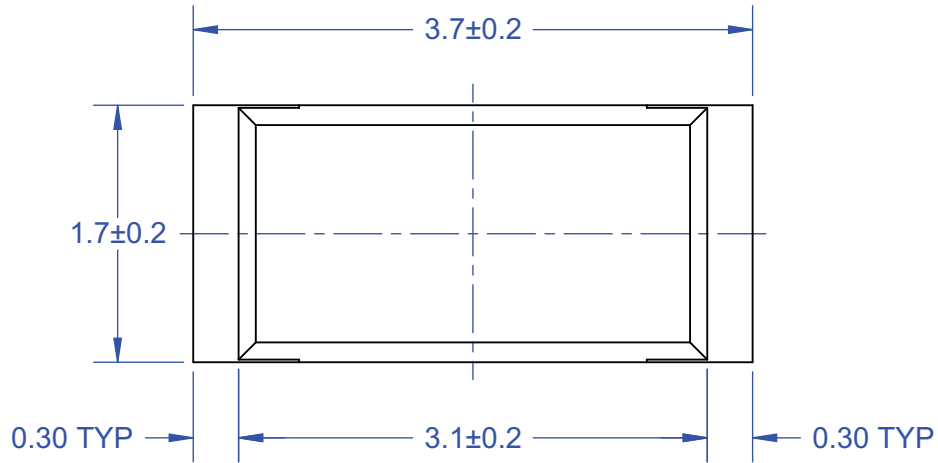
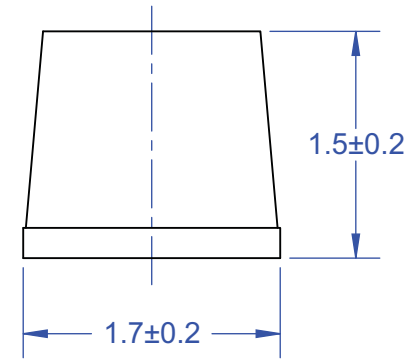


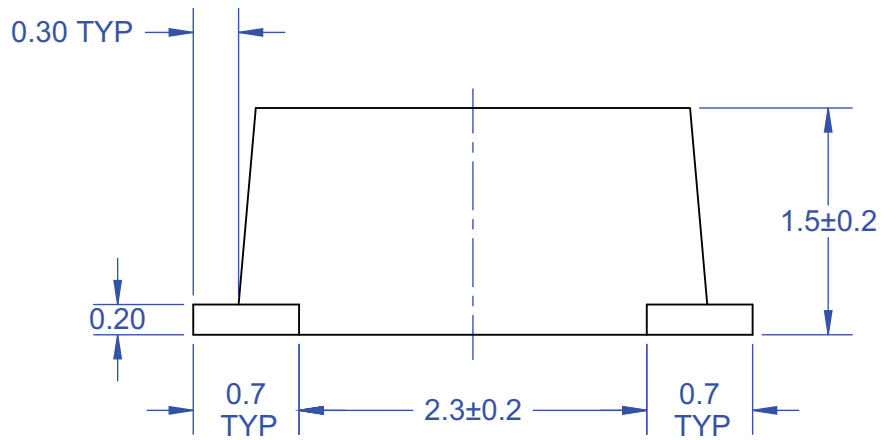
TOP VIEW



END VIEW

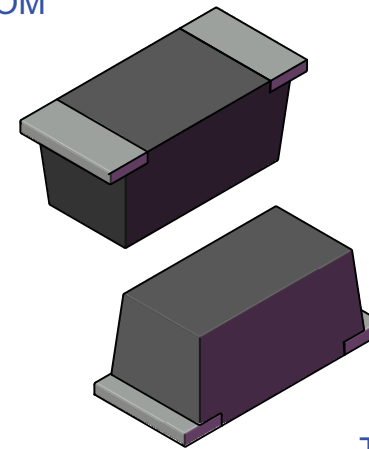


SIDE VIEW



MODEL

BOTTOM



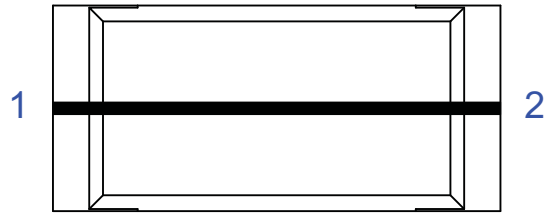
TOP

Notes: (Unless Otherwise Specified).

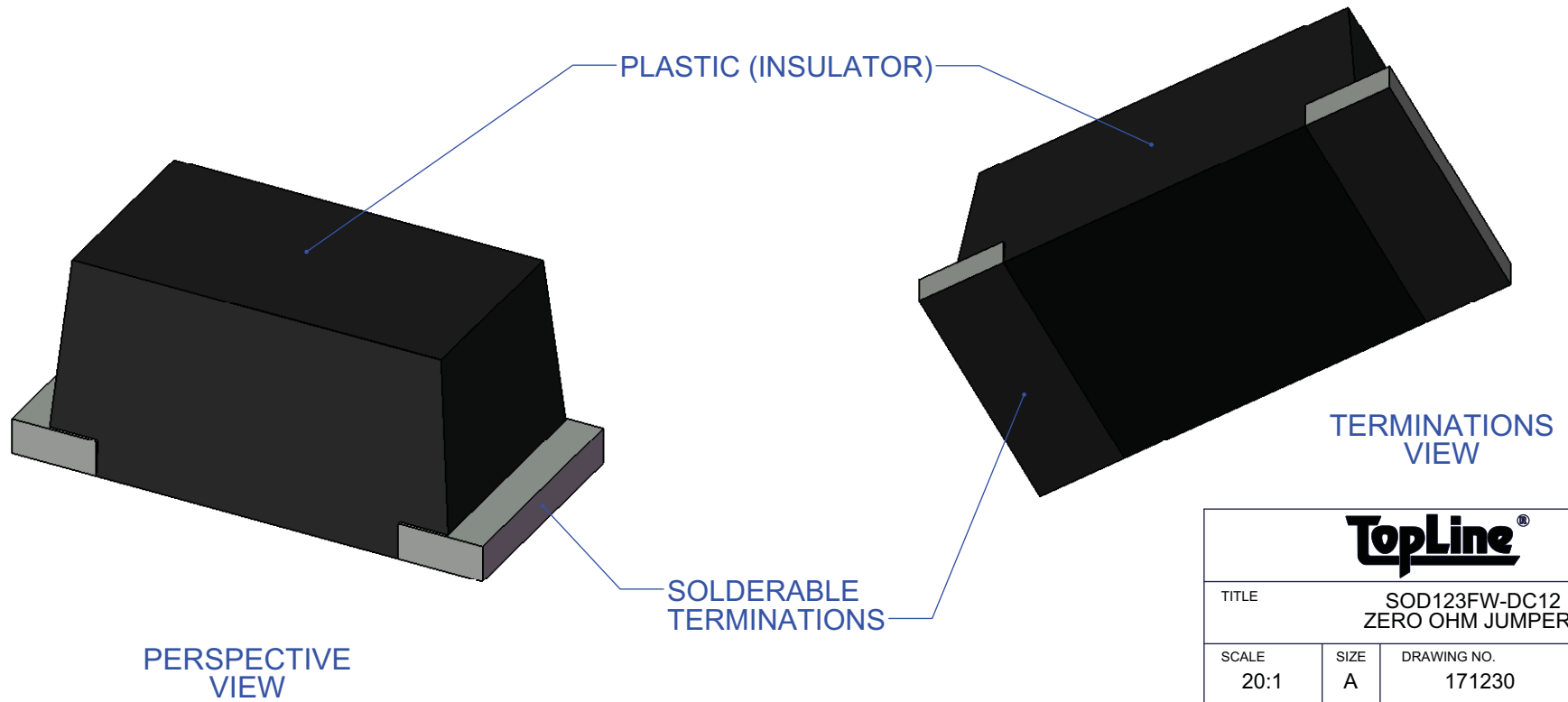
- 1) DIMENSIONS IN mm.
- 2) SEE JUMPER AND SPACER DIAGRAMS (PAGE 2).
- 3) SEE PART NUMBER CONFIGURATION (PAGE 4).
- 4) RECOMMENDED PC BOARD LAYOUT PATTERN (PAGE 5).
- 5) MOUNTING POSITION: ANY (NON-POLARIZED).
- 6) CASE: UL94-V RATED FLAME RETARDANT.

APPROVALS	DATE	TopLine®			
DRAWN T. Au	01/15/13				
ENG M. Hart	01/15/13	TITLE SOD123FW-DC12 ZERO OHM JUMPER			
MFG		SCALE	SIZE A	DRAWING NO. 171230	REV A
QA					
CUST					
REVISED		DO NOT SCALE DRAWING			

INTERNAL WIRING CIRCUIT
PART NUMBER SUFFIX
TOP VIEW

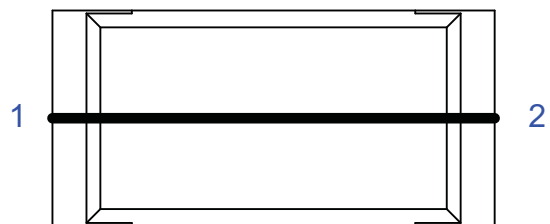


DC12
1-WIRE
CIRCUIT JUMPER



TopLine®			
TITLE		SOD123FW-DC12 ZERO OHM JUMPER	
SCALE	SIZE	DRAWING NO.	REV
20:1	A	171230	A
DO NOT SCALE DRAWING			SHEET 2 OF 7

SCHEMATIC EQUIVALENT INTERNAL CIRCUIT



DC12
(SHORT CIRCUIT)



ELECTRICAL RESISTANCE MILLIOHM (DC) MAX

CIRCUIT	PIN 1 TO PIN 2
DC12	50 milli Ω

THERMAL RESISTANCE

	SOD123FW
JUNCTION TO AMBIENT (T _a =25°) R _{th(j-a)}	60 °C/W

MAXIMUM ELECTRICAL (DC) RATING

	SOD123FW
V _R WORKING VOLTAGE	1000V
V _F FORWARD @ RATED CURRENT	< 0.2V
I _o FORWARD CURRENT	0.5 A
I _{FSM} FORWARD SURGE CURRENT	30 A
I _R REVERSE CURRENT	0.5 A
C _J JUNCTION CAPACITANCE	15 pF

TEMPERATURE RATING

JUNCTION TEMP T _J	150°C
STORAGE TEMP T _{stg}	-65°C TO 150°C
PEAK REFLOW TEMP T _{reflow} 10 SECONDS	260°C

TopLine[®]

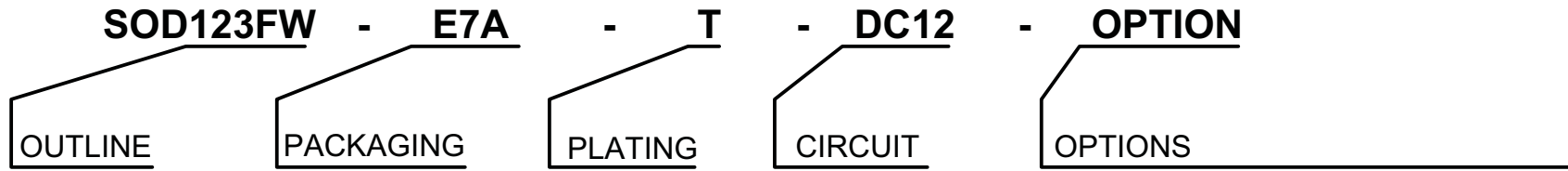
TITLE SOD123FW-DC12
ZERO OHM JUMPER

SCALE	SIZE	DRAWING NO.	REV
15:1	A	171230	A

DO NOT SCALE DRAWING

SHEET3 OF 7

PART NUMBERING SYSTEM



E4A 4-INCH REEL
E7A 7-INCH REEL

T =
Pb-FREE
RoHS
LEAD FREE

Sn100
MATTE TIN
5µm THICK

DAISY CHAIN
JUMPER

DC12 = PIN 1-2

BLANK - COMMERCIAL GRADE (STANDARD)

OUTLINE	REEL QTY	NOTES	RoHS	MSL LEVEL	HALOGEN FREE	APPLICATION	TOP MARK	REF	DP#
SOD123FW-E7A-T-DC12	2500	SHORT CIRCUIT	YES	1	YES	JUMPER	S		171230

TopLine®

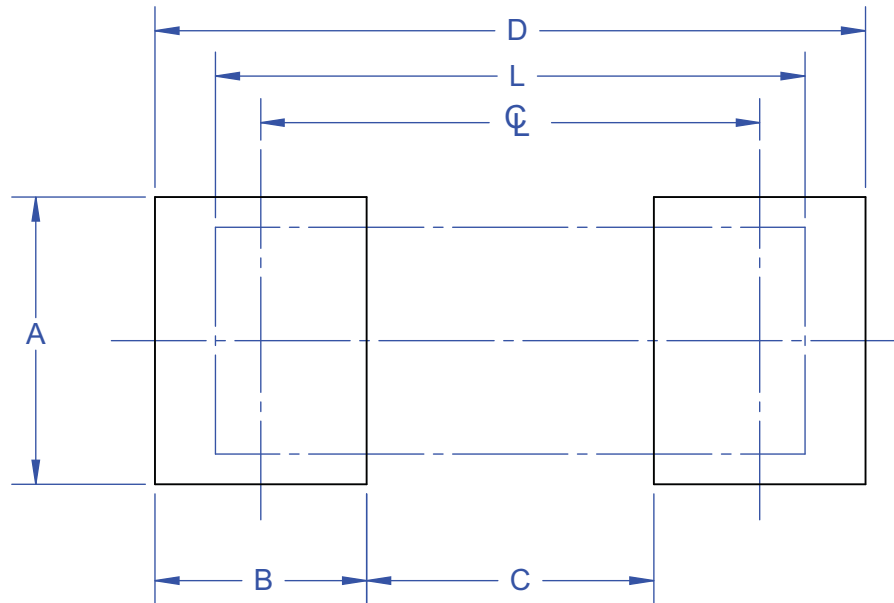
TITLE
SOD123FW-DC12
ZERO OHM JUMPER

SCALE 1:1	SIZE A	DRAWING NO. 171230	REV A
--------------	-----------	-----------------------	----------

DO NOT SCALE DRAWING

SHEET 4 OF 7

PC BOARD LAND PATTERN



ALL DIMENSIONS IN mm

PCB PAD DIMENSIONS

SYMBOL	SOD123FW
A	1.90
B	1.40
C	1.90
D	4.70
φ	3.3
L	3.7

Notes: (Unless Otherwise Specified).

1) DIMENSIONS IN mm.

2) PCB BOARD DIMENSIONS ARE PRESENTED ONLY AS A GUIDELINE.
DESIGNERS SHOULD USE THEIR OWN EXPERIENCE WHEN DESIGNING PCB.

TopLine[®]

TITLE SOD123FW-DC12
ZERO OHM JUMPER

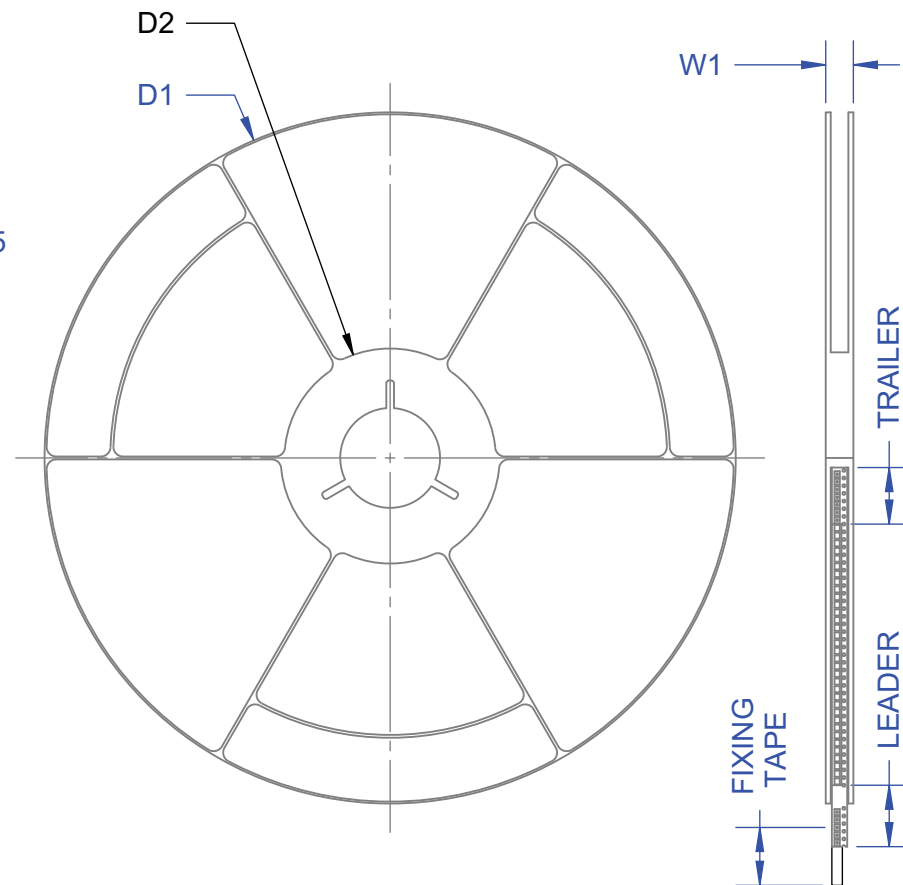
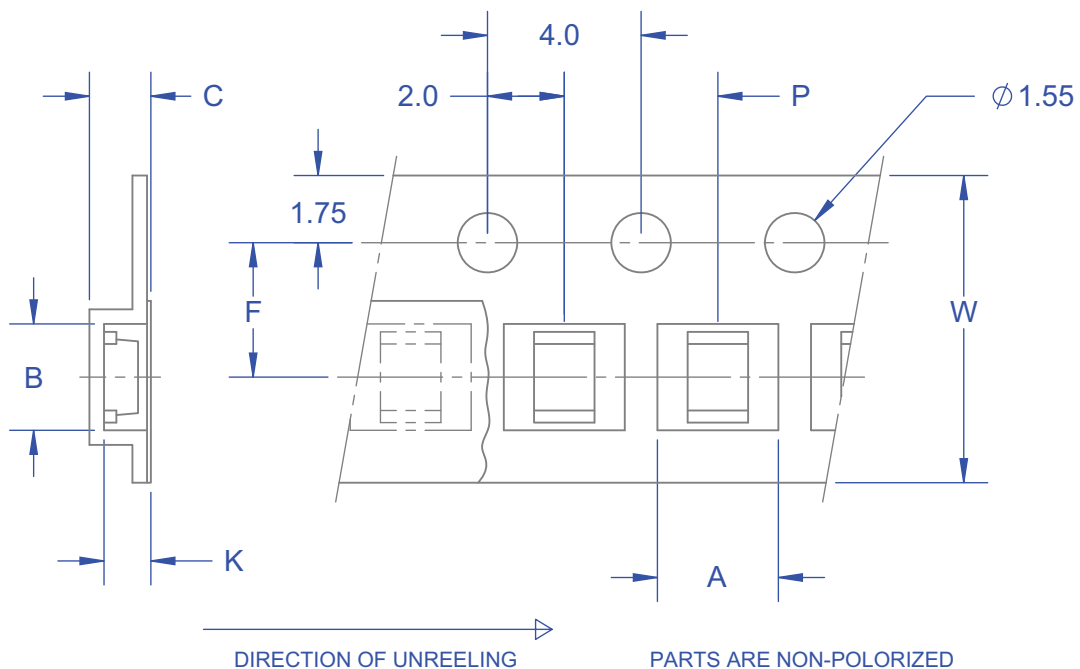
SCALE	SIZE	DRAWING NO.	REV
20:1	A	171230	A

DO NOT SCALE DRAWING

SHEET 5 OF 7

TAPE SPECIFICATION SURFACE MOUNT DEVICE

7 INCH PACKAGE REEL

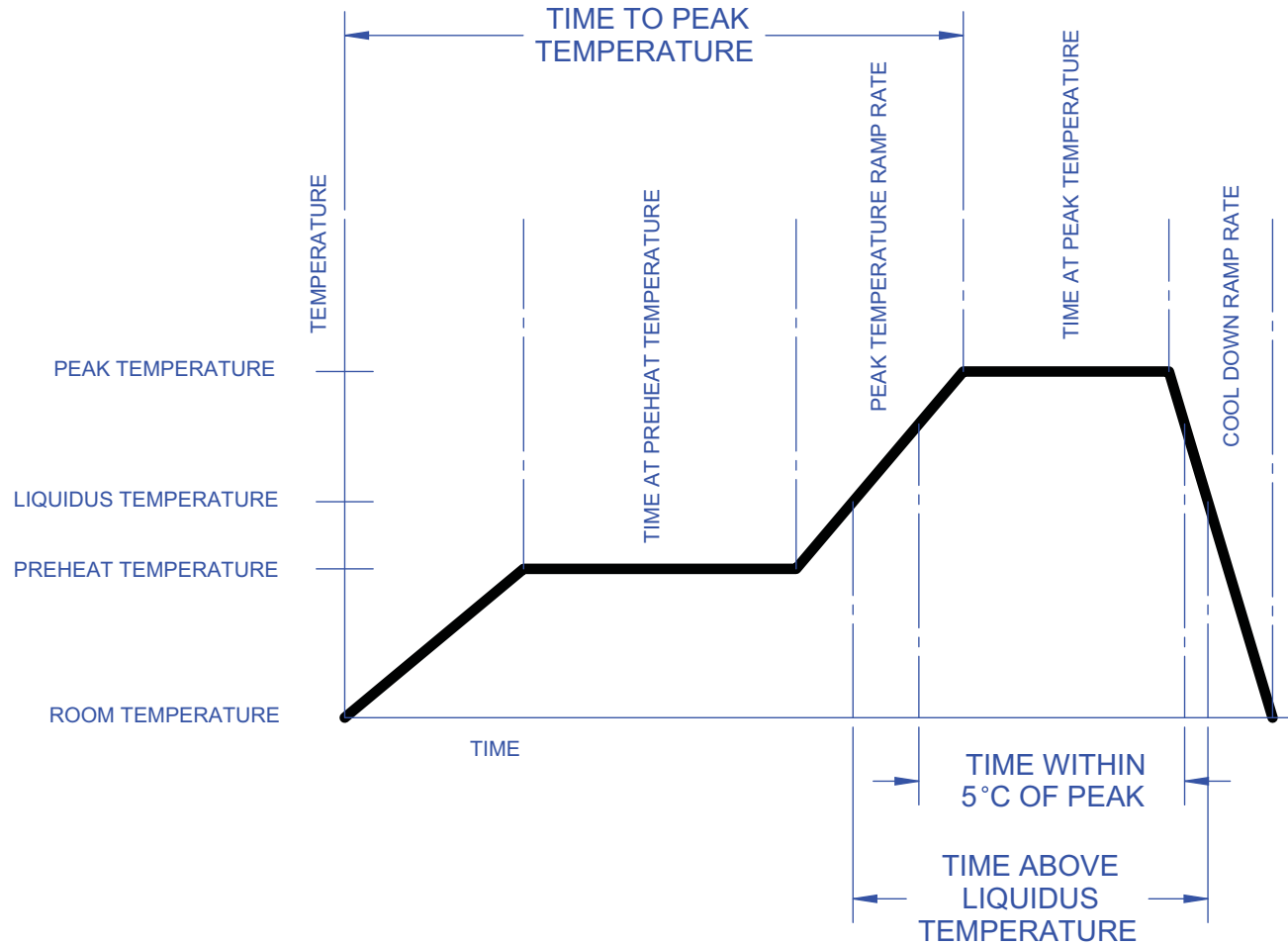


ALL DIMENSIONS IN mm.

TAPE AND REEL DIMENSIONS		
	SYMBOL	SOD123FW
TAPE WIDTH	W	8
PITCH OF COMPONENTS	P	4
POCKET WIDTH	A	1.9
POCKET LENGTH	B	3.9
POCKET DEPTH	K	1.68
CARRIER THICKNESS	C	1.91
REEL DIAMETER	D1	178
HUB DIAMETER	D2	50
PUNCH HOLE POSITION	F	3.5
MAX REEL WIDTH	W1	11.4
REF (JUMPER)	-	FM400S-M
REF (SPACER)	-	FM400N-M
QUANTITY (PSC)	-	2500

TopLine®			
TITLE		SOD123FW-DC12 ZERO OHM JUMPER	
SCALE	SIZE	DRAWING NO.	REV
1:5	A	171230	A
DO NOT SCALE DRAWING			SHEET 6 OF 7

LEAD FREE REFLOW PROFILE OF SMD PACKAGE



DESCRIPTION	REQUIREMENT
AVERAGE PREHEAT RAMP RATE	3°C /SECOND MAXIMUM
PREHEAT TEMPERATURE	150°C MINIMUM, 200°C MAXIMUM
PREHEAT TIME	60 TO 120 SECONDS
RAMP TO PEAK	3°C /SECOND MAXIMUM
TIME OVER LIQUIDUS (217°C)	60 TO 260 SECONDS
PEAK TEMPERATURE	260°C +0/-5°C
TIME WITHING 5°C OF PEAK	10 TO 30 SECONDS
RAMP - COOL DOWN	6°C /SECONDS MAXIMUM
TIME 25°C TO PEAK	6 MINUTES MAXIMUM

TopLine®			
TITLE		SOD123FW-DC12 ZERO OHM JUMPER	
SCALE	SIZE	DRAWING NO.	REV
20:1	A	171230	A
DO NOT SCALE DRAWING			SHEET 7 OF 7