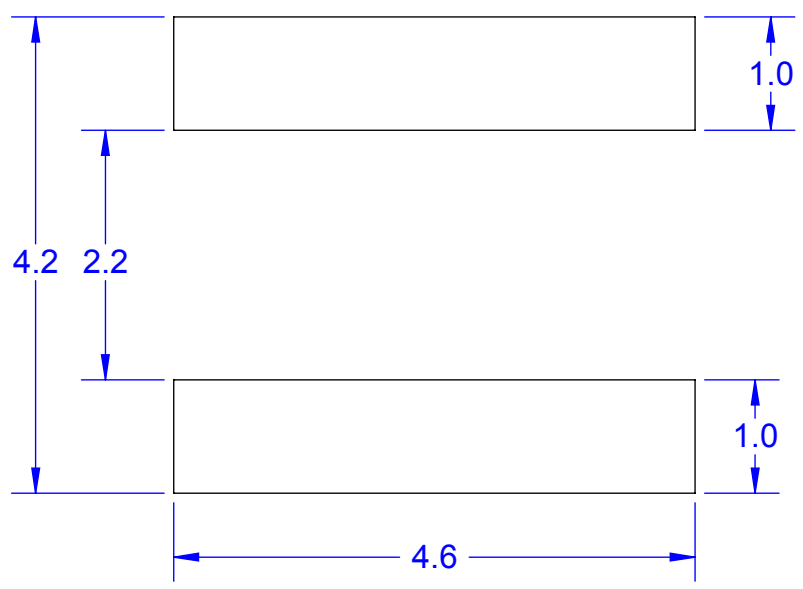
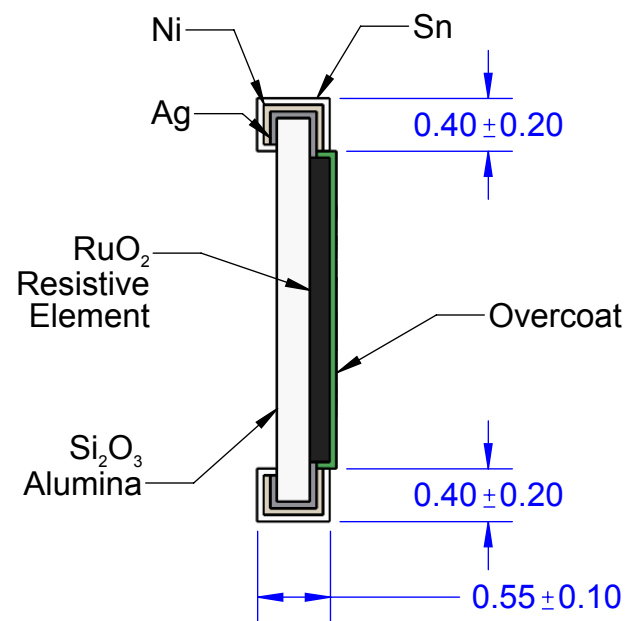


RECOMMENDED PCB PATTERN



PCB DIMENSIONS ARE PRESENTED ONLY AS A GUIDELINE. DESIGNERS SHOULD USE THEIR OWN KNOWLEDGE BASE WHEN DESIGNING THE PCB.



NOTES:

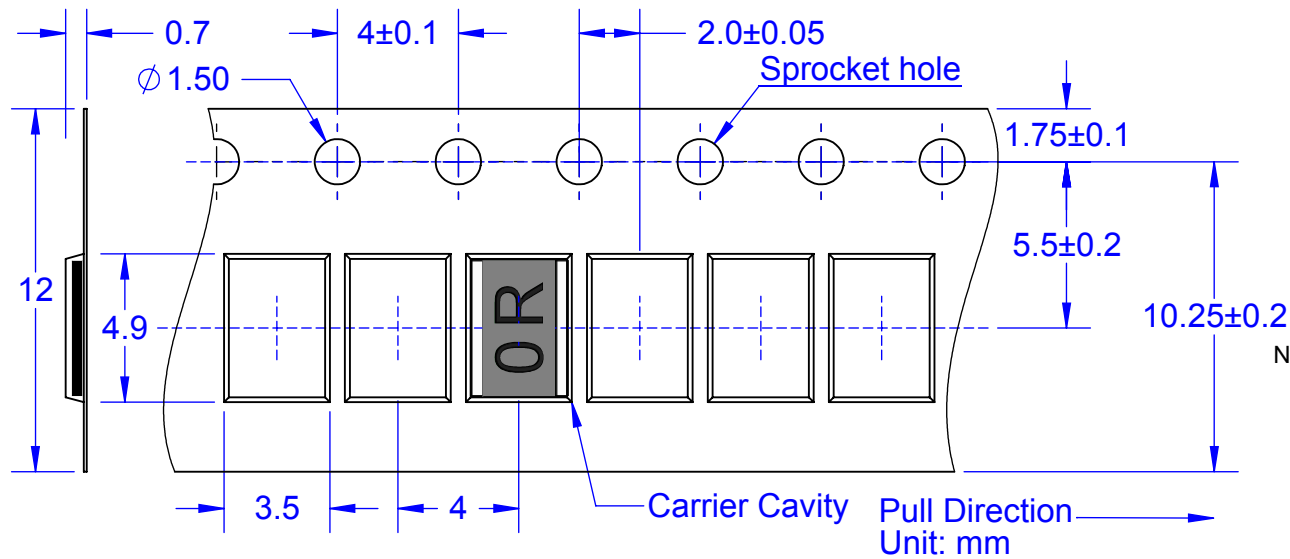
1. DIMENSION mm.
2. TERMINATION: Tin (Sn).
3. Pb-FREE.



MODEL

APPROVALS	DATE	TopLine®			
DRAWN T. Au	06/27/12	TITLE SR1218 WIDE TERMINAL RESISTOR			
ENG M. Hart	06/27/12				
MFG		SCALE	SIZE A	DRAWING NO. 121218	REV A
QA		DO NOT SCALE DRAWING			SHEET 1 OF 2
CUST					
REVISED					

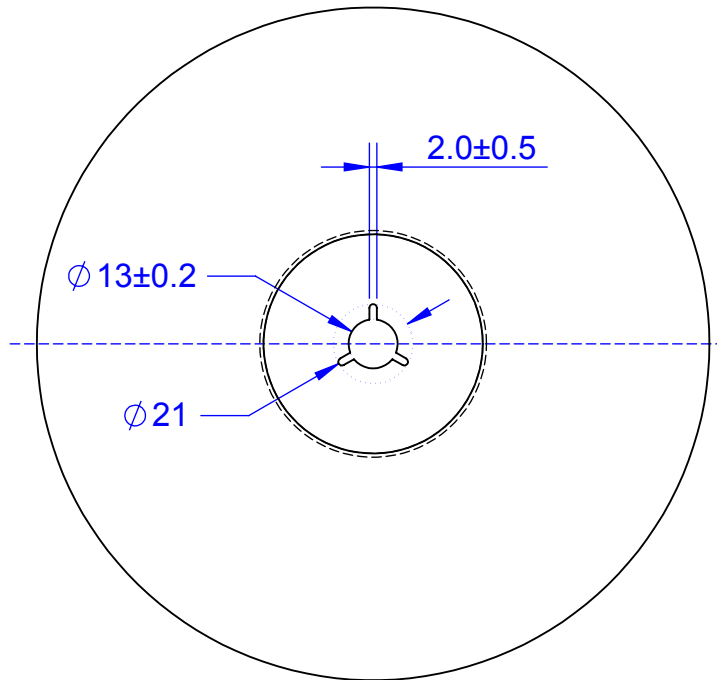
W12P4 CARRIER TAPE



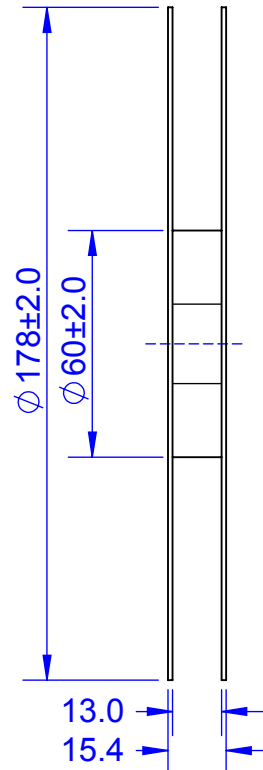
PART NUMBER SYSTEM

SR	1218	E7A	-ZERO-	TIN
RESISTOR	PACK CODE		<50mΩ	TERMINATION
	SIZE CODE			Sn (TIN)
	3.2 x 4.5mm			

NOTE: For Dummy Resistor, replace ZERO with Blank



REEL DIMENSIONS



PACK CODE		
CODE	QTY	PACKAGE
E7A	4000	REEL
E4A	1000	REEL
E	500~1000	*REEL
B	100	BAG

*NOTE: CUT TAPE WITHOUT LEADER

APPROVALS	DATE	TopLine®			
DRAWN T. Au	06/27/12				
ENG M. Hart	06/27/12	TITLE SR1218 WIDE TERMINAL RESISTOR			
MFG		SCALE	SIZE A	DRAWING NO.	REV
QA				121218	A
CUST		DO NOT SCALE DRAWING			SHEET 2 OF 2
REVISED					