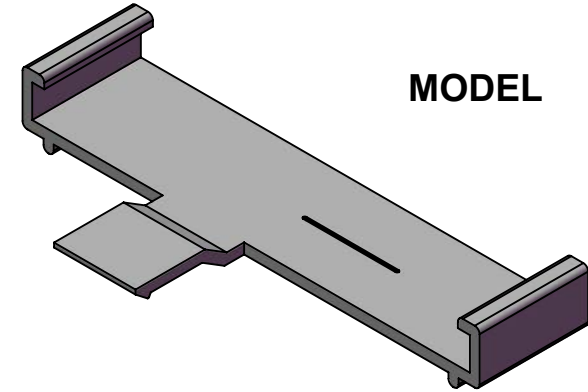
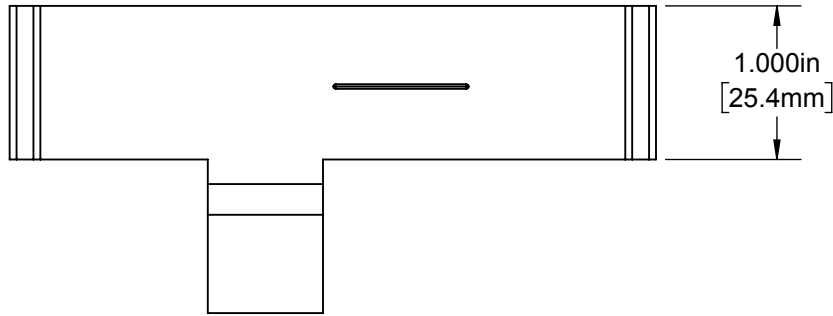
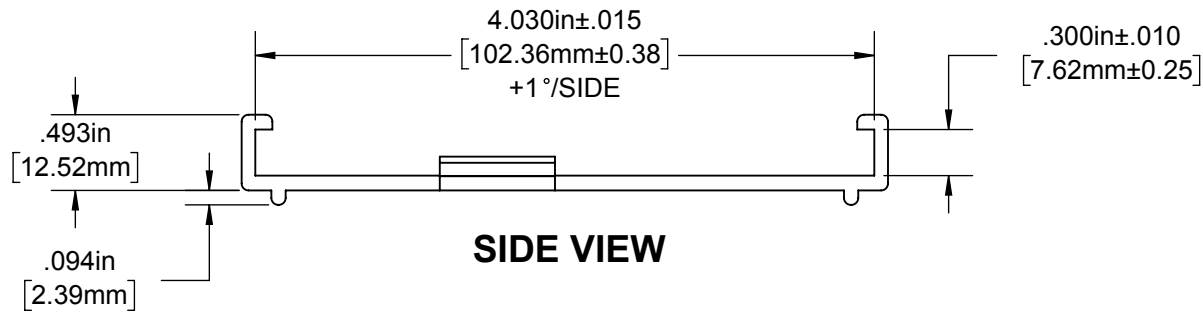


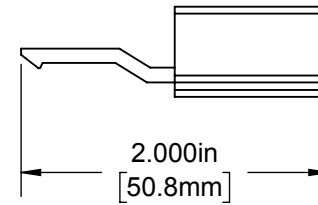
**TOP**



**MODEL**

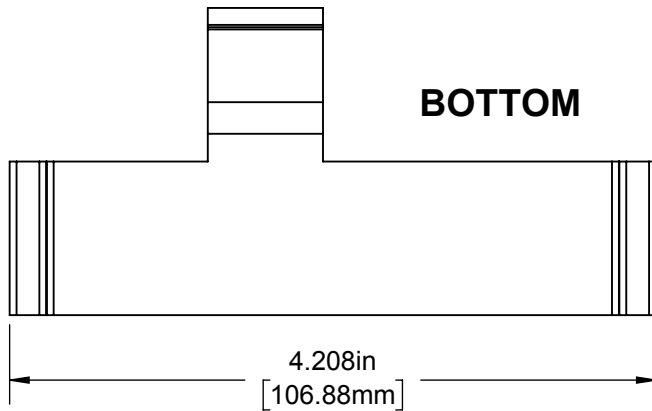


**SIDE VIEW**



**EDGE VIEW**

**BOTTOM**



**PART NUMBER TABLE**

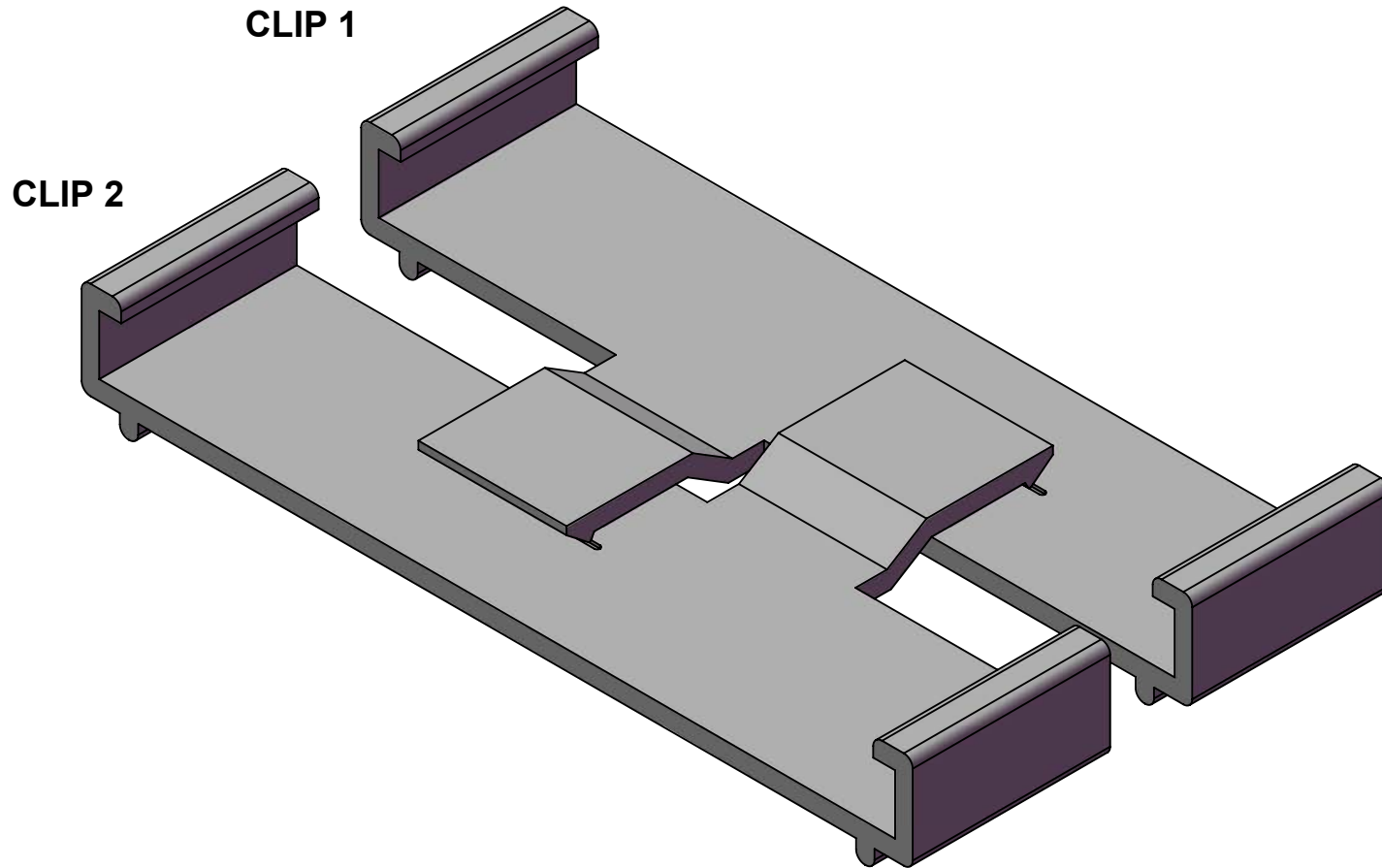
PART NBR	COLOR	Surface Resistivity Ohms/SQ.	REF
WP4-CLIP-N	NATURAL	>10 <sup>12</sup> Ω	153777
WP4-CLIP-B	BLACK	10 <sup>3</sup> ~10 <sup>6</sup> Ω	182100

**NOTES:**

1. SIZE INCH [mm].
2. MATERIAL: POLYPROPYLENE.
3. TWO CLIPS REQUIRED PER ASSEMBLY.

APPROVALS	DATE	<b>TopLine®</b>			
DRAWN T. Au	9/16/2020				
ENG M. Hart	9/16/2020	TITLE WP4-CLIP 4" WAFFLE PACK			
MFG					
QA		SCALE	SIZE	DRAWING NO.	REV
CUST		1:1.25	A	140015	A
REVISED		DO NOT SCALE DRAWING			SHEET 1 OF 5

# TWO CLIP ASSEMBLY



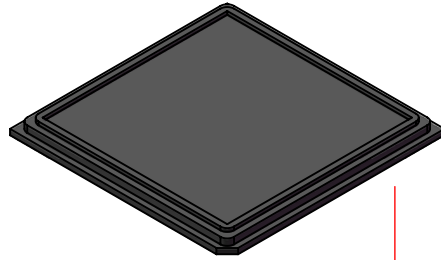
**NOTES:**

- 1. TWO CLIP REQUIRED PER ASSEMBLY.
- 2. SECURES TOGETHER WP4-BOTTOM TRAY + WP4-COVER.

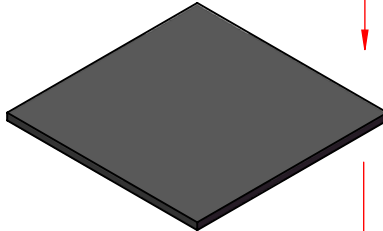
<b>TopLine<sup>®</sup></b>			
TITLE		WP4-CLIP 4" WAFFLE PACK	
SCALE	SIZE	DRAWING NO.	REV
3:2	A	140015	A
DO NOT SCALE DRAWING			SHEET 2 OF 5

# EXPLODED VIEW

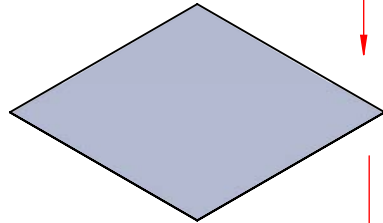
DWG 140000  
4" COVER



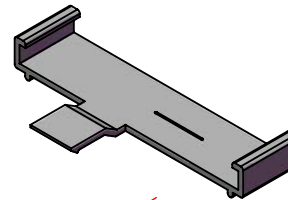
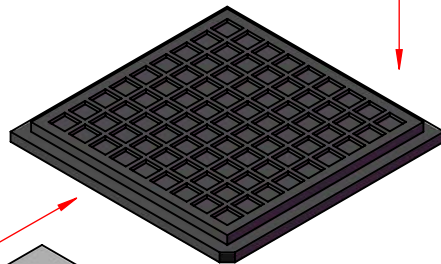
DWG 090012  
3.5" x 0.125" ESD FOAM  
OPTIONAL



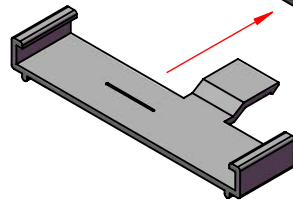
DWG 140001  
LINER SHEET  
TYVEK 3.5" SQ



4" WAFFLE TRAY



CLIP 1



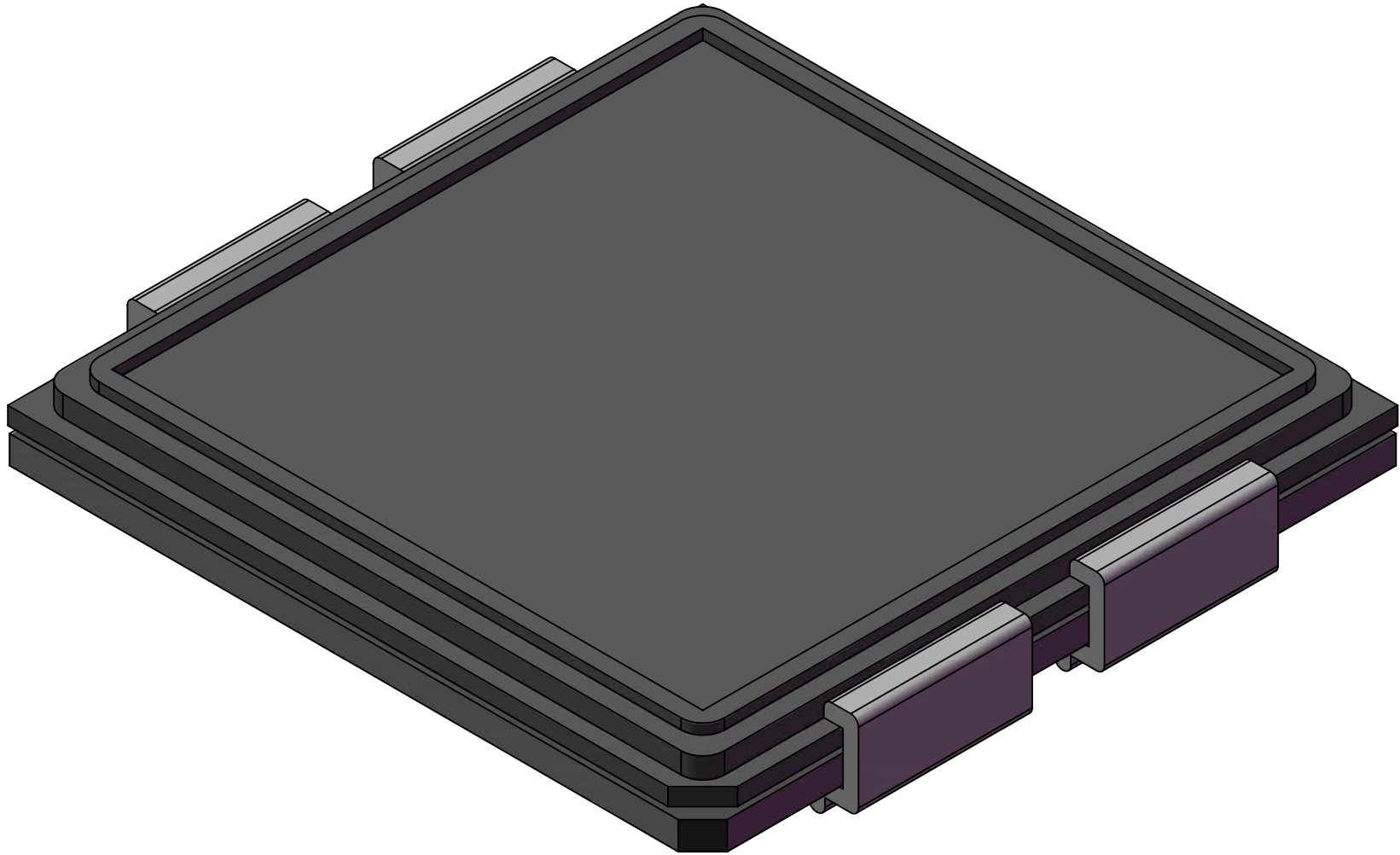
CLIP 2

**NOTES:**

1. TWO CLIP REQUIRED PER ASSEMBLY.
2. SECURES TOGETHER WP4-BOTTOM TRAY + WP4-COVER.

<b>TopLine<sup>®</sup></b>			
TITLE		WP4-CLIP 4" WAFFLE PACK	
SCALE	SIZE	DRAWING NO.	REV
1:2.5	A	140015	A
DO NOT SCALE DRAWING			SHEET 3 OF 5

**ASSEMBLY WITH TRAY AND COVER  
(TOP VIEW)**

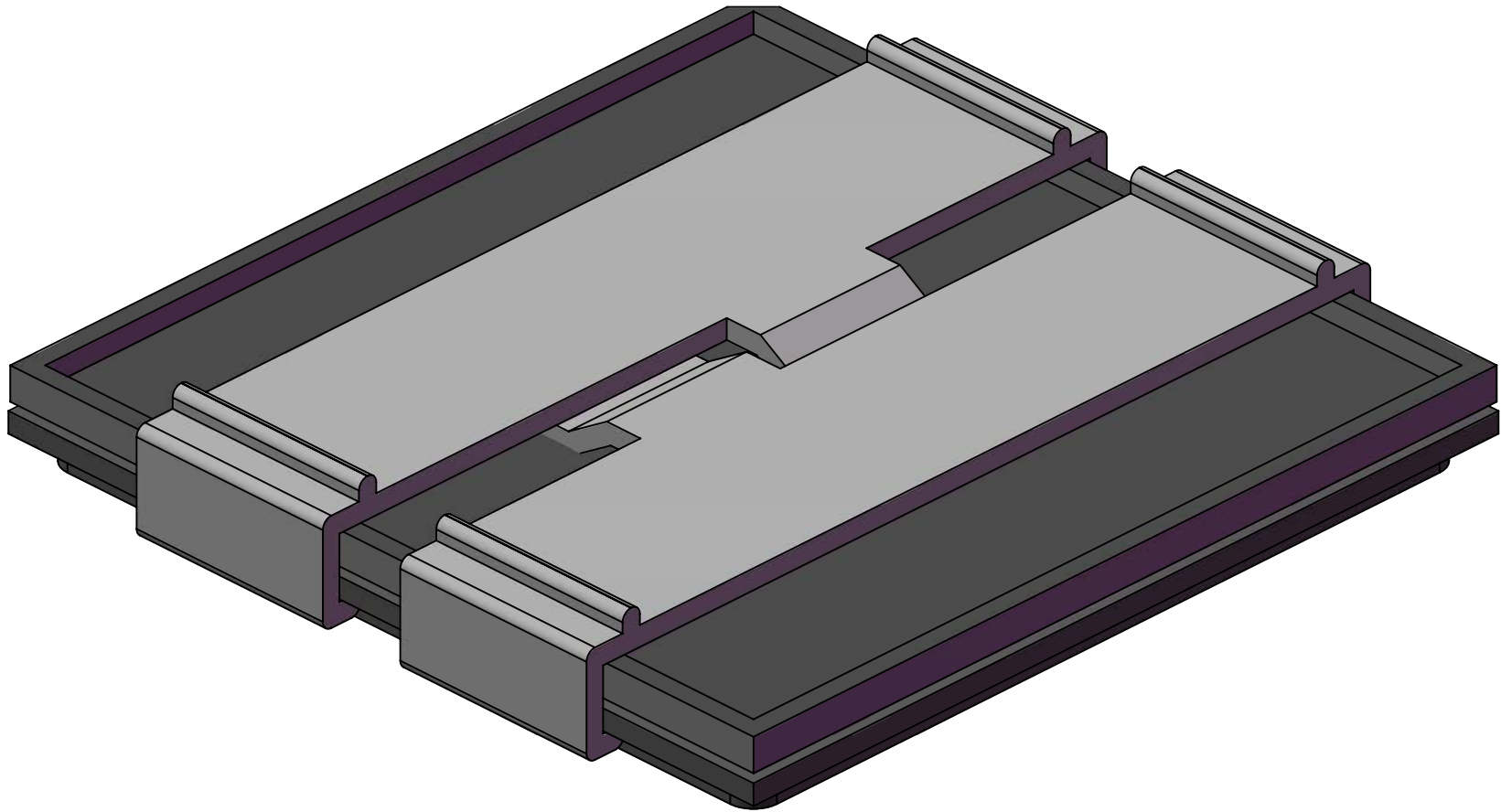


**NOTES:**

1. TWO CLIP REQUIRED PER ASSEMBLY.
2. SECURES TOGETHER WP4-TRAY + WP4-COVER.

<b>TopLine®</b>			
TITLE		WP4-CLIP 4" WAFFLE PACK	
SCALE	SIZE	DRAWING NO.	REV
3:2	A	140015	A
DO NOT SCALE DRAWING			SHEET 4 OF 5

# ASSEMBLY WITH TRAY AND COVER (BOTTOM VIEW)



**NOTES:**

- 1. TWO CLIP REQUIRED PER ASSEMBLY.
- 2. SECURES TOGETHER WP4-TRAY + WP4-COVER.

<b>TopLine<sup>®</sup></b>			
TITLE		WP4-CLIP 4" WAFFLE PACK	
SCALE	SIZE	DRAWING NO.	REV
3:2	A	140015	A
DO NOT SCALE DRAWING			SHEET 5 OF 5