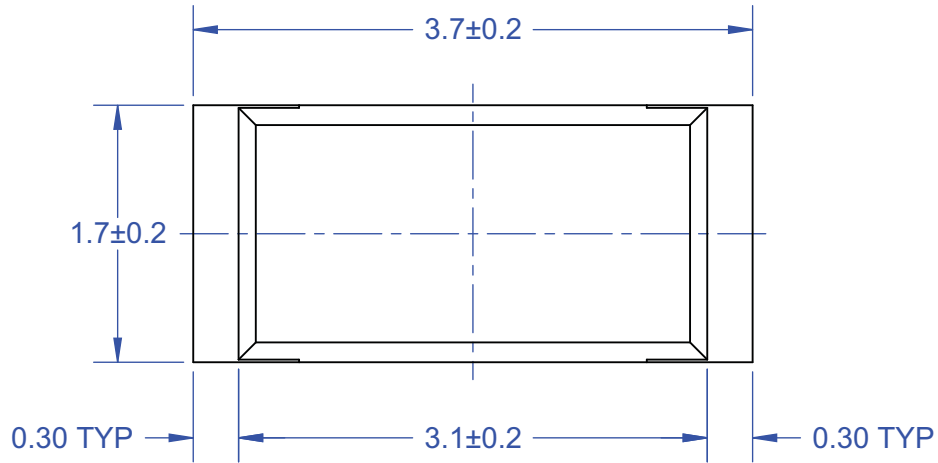
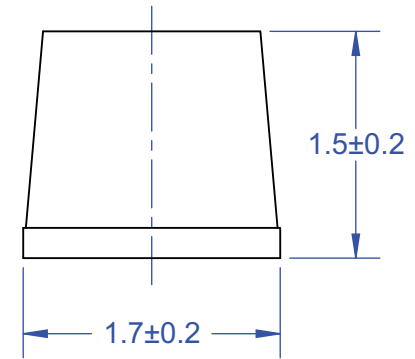


SOD123FW-ISO OUTLINE FLAT WIDE LEADS

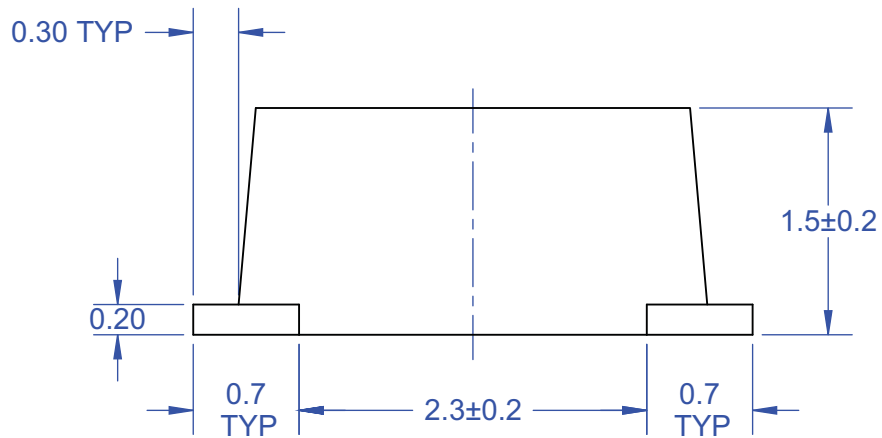
TOP VIEW



END VIEW

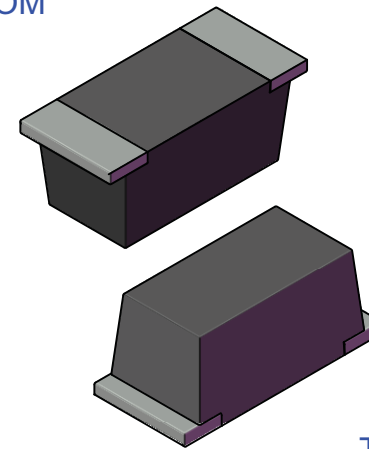


SIDE VIEW



MODEL

BOTTOM



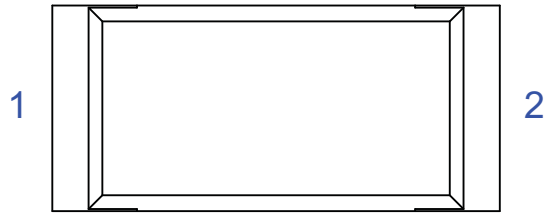
TOP

Notes: (Unless Otherwise Specified).

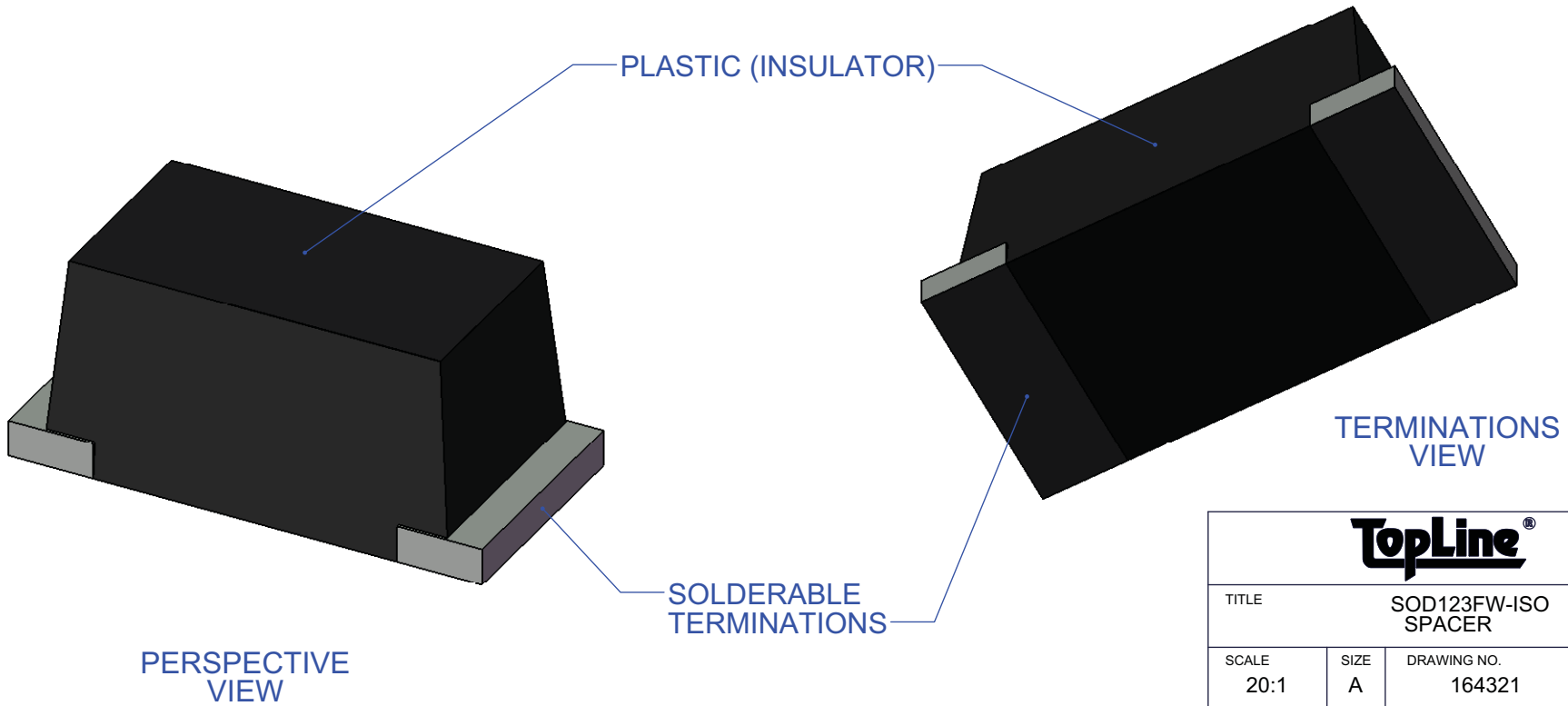
- 1) DIMENSIONS IN mm.
- 2) SEE JUMPER AND SPACER DIAGRAMS (PAGE 2).
- 3) SEE PART NUMBER CONFIGURATION (PAGE 4).
- 4) RECOMMENDED PC BOARD LAYOUT PATTERN (PAGE 5).
- 5) MOUNTING POSITION: ANY (NON-POLARIZED).
- 6) CASE: UL94-V RATED FLAME RETARDANT.

APPROVALS		DATE	TopLine®			
DRAWN	T.Au	01/15/13				
ENG	M. Hart	11/2019	TITLE			
MFG			SOD123FW-ISO SPACER			
QA			SCALE	SIZE	DRAWING NO.	REV
CUST			20:1	A	164321	A
REVISED			DO NOT SCALE DRAWING			SHEET 1 OF 1

INTERNAL WIRING CIRCUIT
PART NUMBER SUFFIX
TOP VIEW

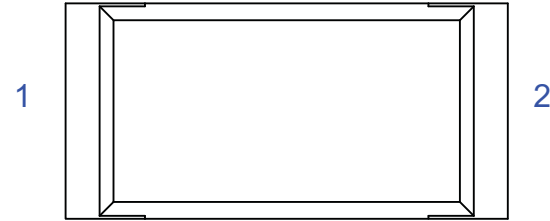


ISO
NO CONNECTION
FULLY ISOLATED
NON-CONDUCTIVE SPACER




TopLine[®]			
TITLE		SOD123FW-ISO SPACER	
SCALE	SIZE	DRAWING NO.	REV
20:1	A	164321	A
DO NOT SCALE DRAWING			SHEET 2 OF 7

SCHEMATIC EQUIVALENT INTERNAL CIRCUIT



ISOLATED CIRCUIT
NO CONNECTIONS

PIN 1   PIN 2

IR (INSULATION RESISTANCE)

INSULATION RESISTANCE GIGA OHM (DC) MIN	
CIRCUIT	PIN 1 TO PIN 2
ISO	> 10 G Ω

THERMAL RESISTANCE	
	SOD123FW
JUNCTION TO AMBIENT ($T_a=25^\circ$) $R_{\theta(j-a)}$	60 $^\circ\text{C/W}$

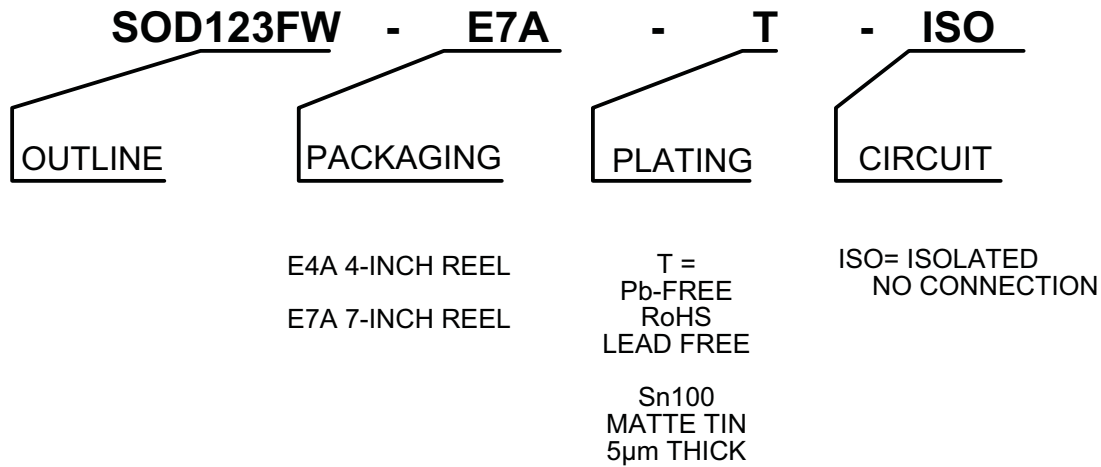
MAXIMUM ELECTRICAL (DC) RATING	
	SOD123FW
V_R WORKING VOLTAGE	1000V
V_F FORWARD @ RATED CURRENT	< 0
I_o FORWARD CURRENT	0
I_{FSM} FORWARD SURGE CURRENT	0
I_R REVERSE CURRENT	0
C_j JUNCTION CAPACITANCE	15 pF

TEMPERATURE RATING	
JUNCTION TEMP T_j	150 $^\circ\text{C}$
STORAGE TEMP T_{stg}	-65 $^\circ\text{C}$ TO 150 $^\circ\text{C}$
PEAK REFLOW TEMP T_{reflow} 10 SECONDS	260 $^\circ\text{C}$

TopLine[®]

TITLE		SOD123FW-ISO SPACER	
SCALE	SIZE	DRAWING NO.	REV
15:1	A	164321	A
DO NOT SCALE DRAWING			SHEET3 OF 7

PART NUMBERING SYSTEM

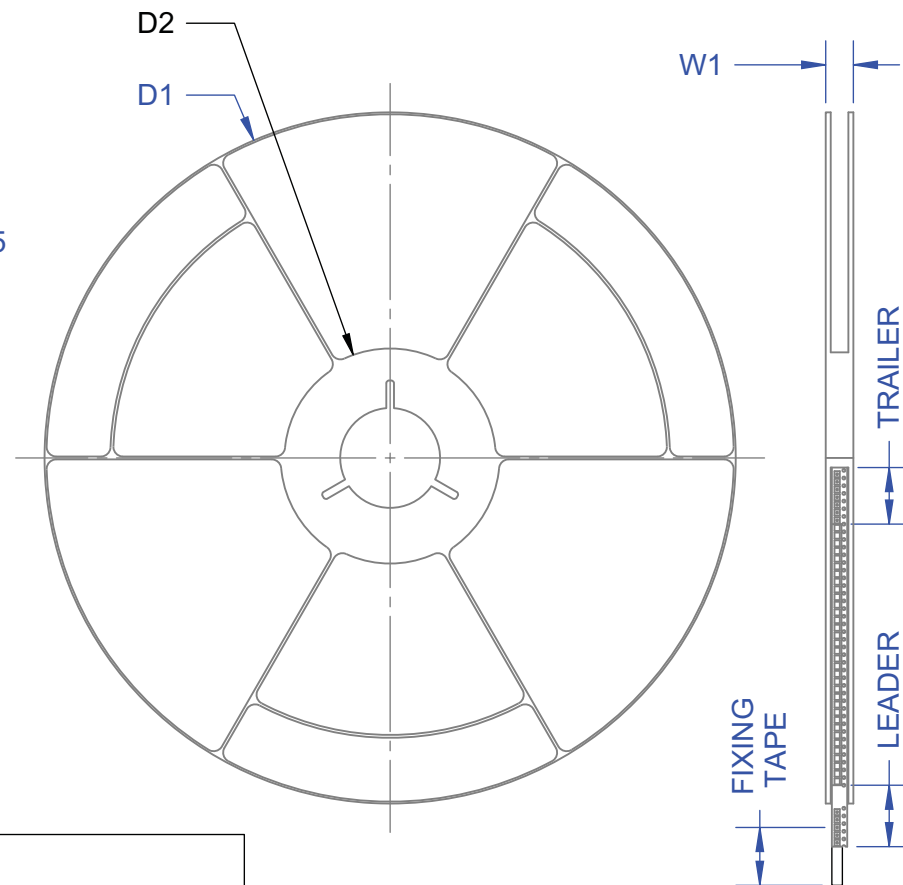
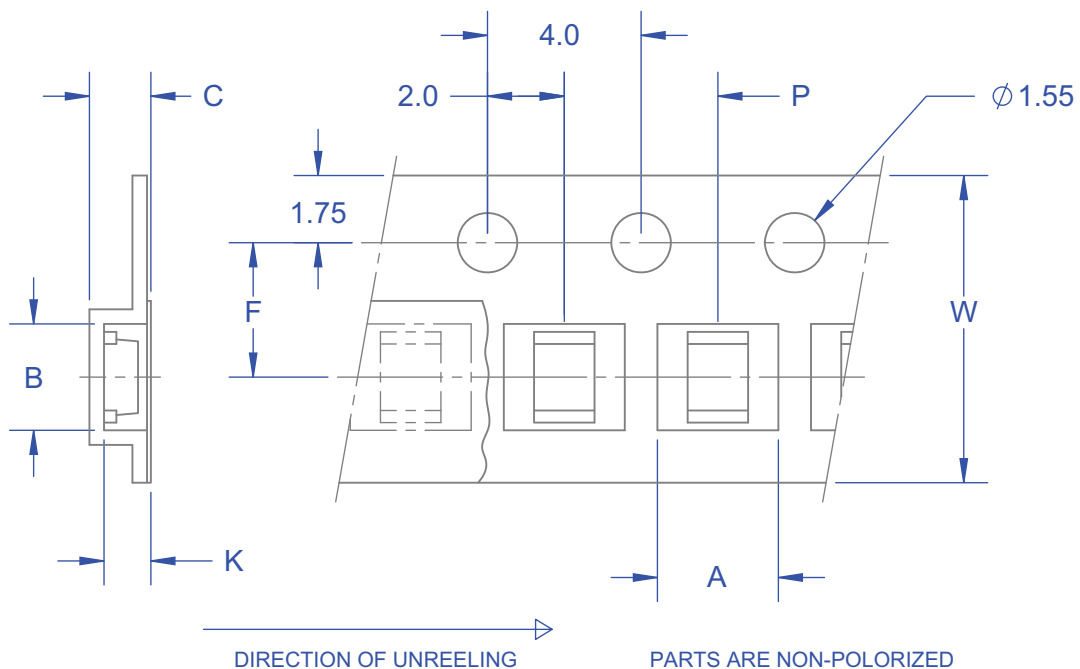


OUTLINE	REEL QTY	NOTES	RoHS	MSL LEVEL	HALOGEN FREE	APPLICATION	TOP MARK	REF	DP#
SOD123FW-E7A-T-ISO	2500	OPEN CIRCUIT	YES	1	YES	SPACER	N	FM400N-M	164321

TopLine®			
TITLE		SOD125FW-ISO SPACER	
SCALE	SIZE	DRAWING NO.	REV
1:1	A	164321	A
DO NOT SCALE DRAWING			SHEET 4 OF 7

TAPE SPECIFICATION SURFACE MOUNT DEVICE

7 INCH PACKAGE REEL

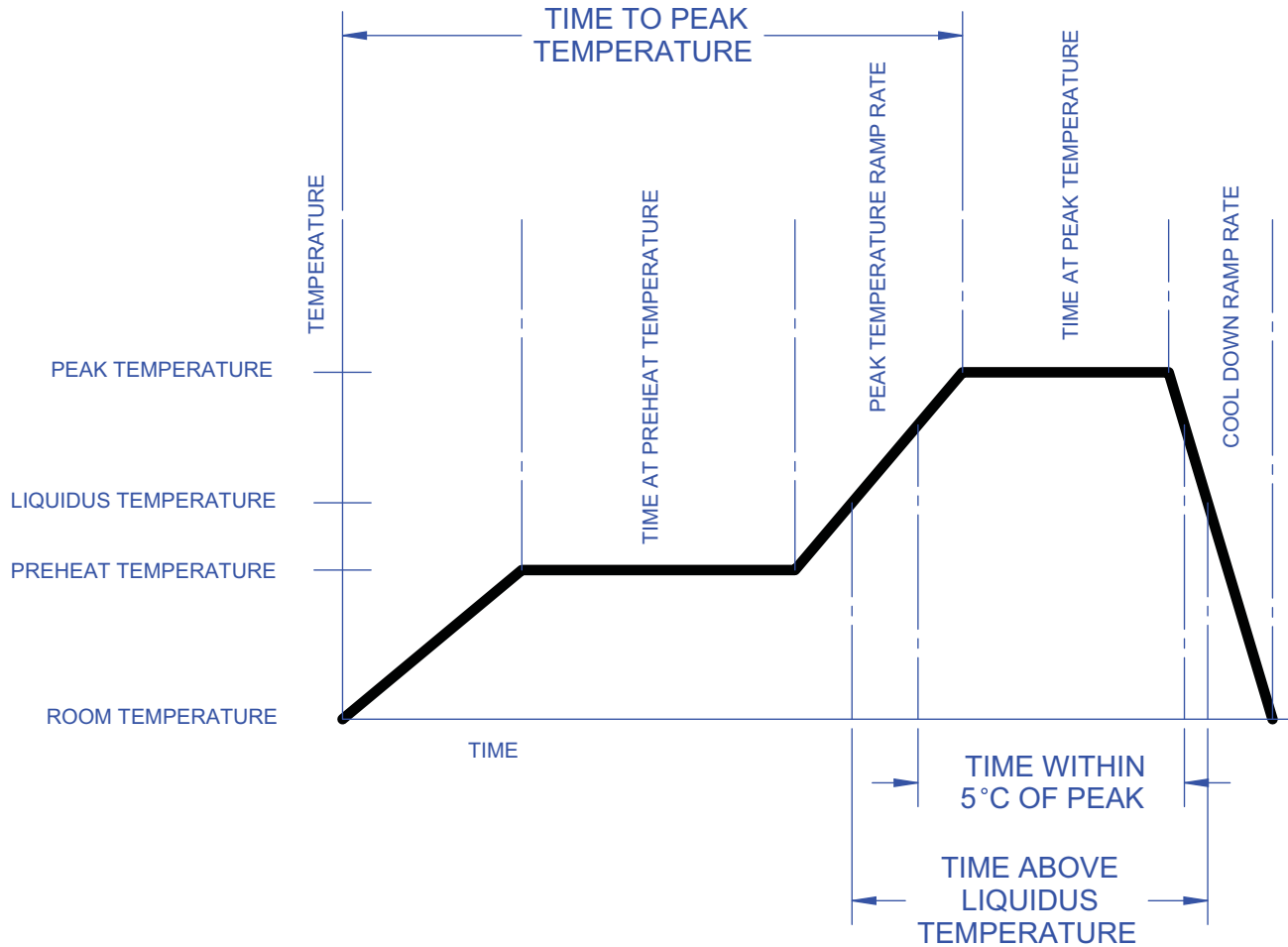


ALL DIMENSIONS IN mm.

TAPE AND REEL DIMENSIONS		E7A 7-INCH	
	SYMBOL	SOD123FW	
TAPE WIDTH	W	8	
PITCH OF COMPONENTS	P	4	
POCKET WIDTH	A	1.9	
POCKET LENGTH	B	3.9	
POCKET DEPTH	K	1.68	
CARRIER THICKNESS	C	1.91	
REEL DIAMETER	D1	178	
HUB DIAMETER	D2	50	
PUNCH HOLE POSITION	F	3.5	
MAX REEL WIDTH	W1	11.4	
REF (JUMPER)	-	FM400S-M	
REF (SPACER)	-	FM400N-M	
QUANTITY (PSC)	-	2500	

TopLine®			
TITLE		SOD123FW-ISO SPACER	
SCALE	SIZE	DRAWING NO.	REV
1:5	A	164321	A
DO NOT SCALE DRAWING			SHEET 6 OF 7

LEAD FREE REFLOW PROFILE OF SMD PACKAGE



DESCRIPTION	REQUIREMENT
AVERAGE PREHEAT RAMP RATE	3°C /SECOND MAXIMUM
PREHEAT TEMPERATURE	150°C MINIMUM, 200°C MAXIMUM
PREHEAT TIME	60 TO 120 SECONDS
RAMP TO PEAK	3°C /SECOND MAXIMUM
TIME OVER LIQUIDUS (217°C)	60 TO 260 SECONDS
PEAK TEMPERATURE	260°C +0/-5°C
TIME WITHING 5°C OF PEAK	10 TO 30 SECONDS
RAMP - COOL DOWN	6°C /SECONDS MAXIMUM
TIME 25°C TO PEAK	6 MINUTES MAXIMUM

TopLine®

TITLE		SOD123FW-ISO SPACER	
SCALE	SIZE	DRAWING NO.	REV
20:1	A	164321	A
DO NOT SCALE DRAWING			SHEET 7 OF 7