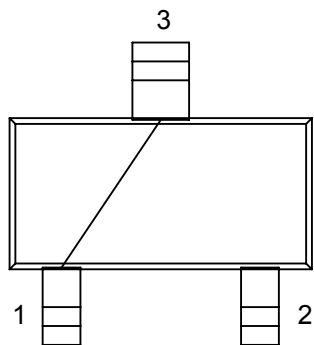


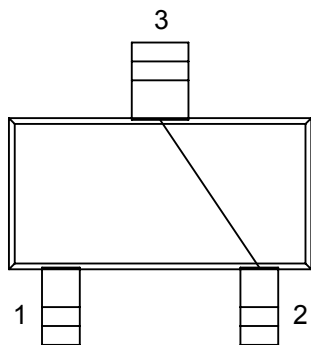
Notes: (Unless Otherwise Specified).
 1) DIMENSIONS IN mm.
 2) SEE DAISY CHAIN JUMPER DIAGRAMS (PAGE 2).
 3) SEE PART NUMBER CONFIGURATION (PAGE 4).
 4) RECOMMENDED PCB BOARD LAYOUT PATTERN (PAGE 7).

APPROVALS	DATE	TopLine®			
DRAWN T. Au	10/13/13				
ENG M. Hart	10/13/13	TITLE SOT523 JUMPER DAISY CHAIN			
MFG		SCALE 33.3:1	SIZE A	DRAWING NO. 120523	REV A
QA		DO NOT SCALE DRAWING			SHEET 1 OF 7
CUST					
REVISED					

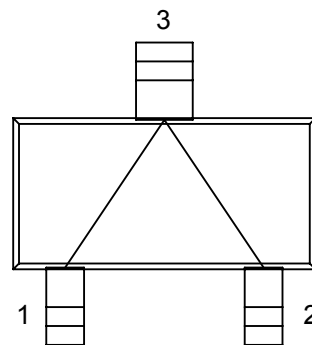
**INTERNAL WIRING CIRCUIT (JUMPER)
DAISY CHAIN PART NUMBER SUFFIX
TOP VIEW**



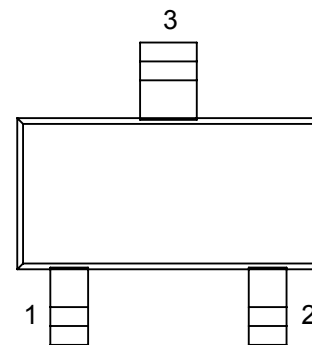
DC13
1-WIRE



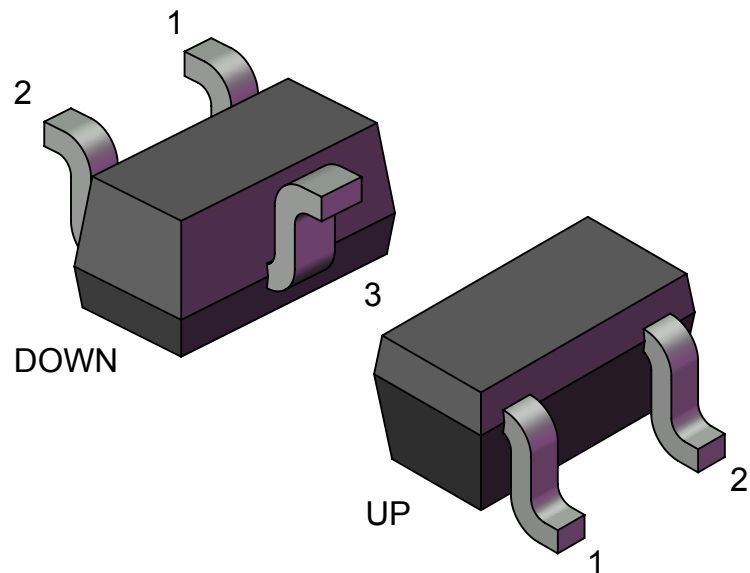
DC23
1-WIRE



DC123
2-WIRE

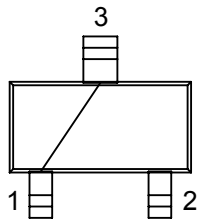


-ISO
NO WIRES
FULLY ISOLATED

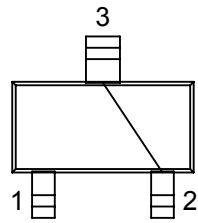
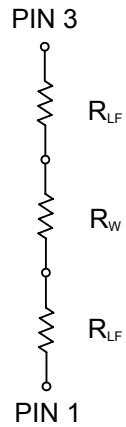


TopLine®			
TITLE		SOT523 JUMPER DAISY CHAIN	
SCALE	SIZE	DRAWING NO.	REV
25:1	A	120523	A
DO NOT SCALE DRAWING			SHEET 2 OF 7

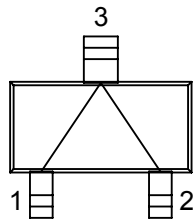
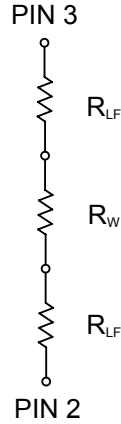
SCHEMATIC EQUIVALENT INTERNAL CIRCUIT



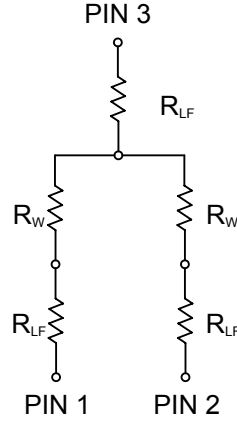
DC13
1-WIRE



DC23
1-WIRE



DC123
2-WIRE



ELECTRICAL RESISTANCE MILIOHM (DC) MAX

CIRCUIT	PIN 1 TO 3	PIN 2 TO 3	PIN 1 TO 2
DC13	50 mΩ	--	--
DC23	--	50 mΩ	--
DC123	50 mΩ	50 mΩ	75 mΩ

R_w = GOLD WIRE-BOND.
 R_{LF} = LEAD FRAME.

TEMPERATURE RATING

JUNCTION TEMP T_j	150 °C
STORAGE TEMP T_{stg}	-65 °C TO 150 °C
OPERATING TEMP	-65 °C TO 150 °C
PEAK REFLOW TEMP T_{reflow} 10 SECONDS	260 °C

MAXIMUM ELECTRICAL (DC) RATING

WORKING VOLTAGE	75 V
CURRENT RATING	200 mA
POWER @ 25 °C	150 mW

THERMAL RESISTANCE

JUNCTION TO AMBIENT ($T_a=25^\circ$) $R_{th(j-a)}$	800 °C/W
---	----------

TopLine®

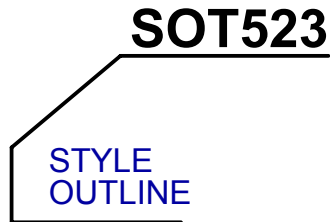
TITLE SOT523 JUMPER
DAISY CHAIN

SCALE 15:1	SIZE A	DRAWING NO. 120523	REV A
---------------	-----------	-----------------------	----------

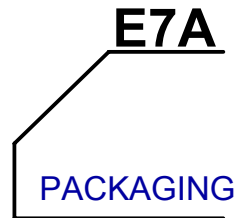
DO NOT SCALE DRAWING

SHEET 3 OF 7

PART NUMBERING SYSTEM

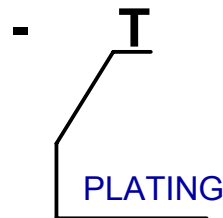


3 - TERMINAL
GULL WING



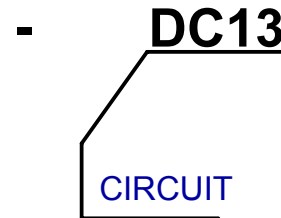
E7A =
REEL 3000 pcs

E4A =
REEL 500 pcs



T =
Pb-FREE
RoHS
LEAD FREE

Sn100
MATTE TIN



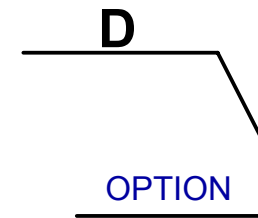
DAISY CHAIN JUMPER

DC13 PIN 1-3

DC23 PIN 2-3

DC123 PIN 1-2-3

ISO = ISOLATED CIRCUIT
NO CONNECTIONS



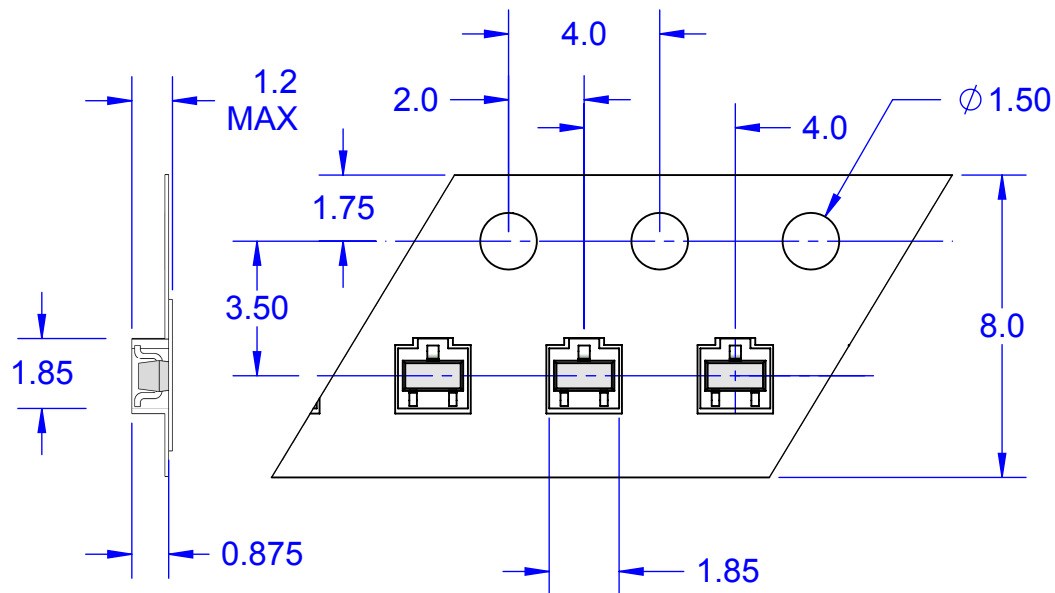
BLANK = STANDARD

D = DUMMY DIE

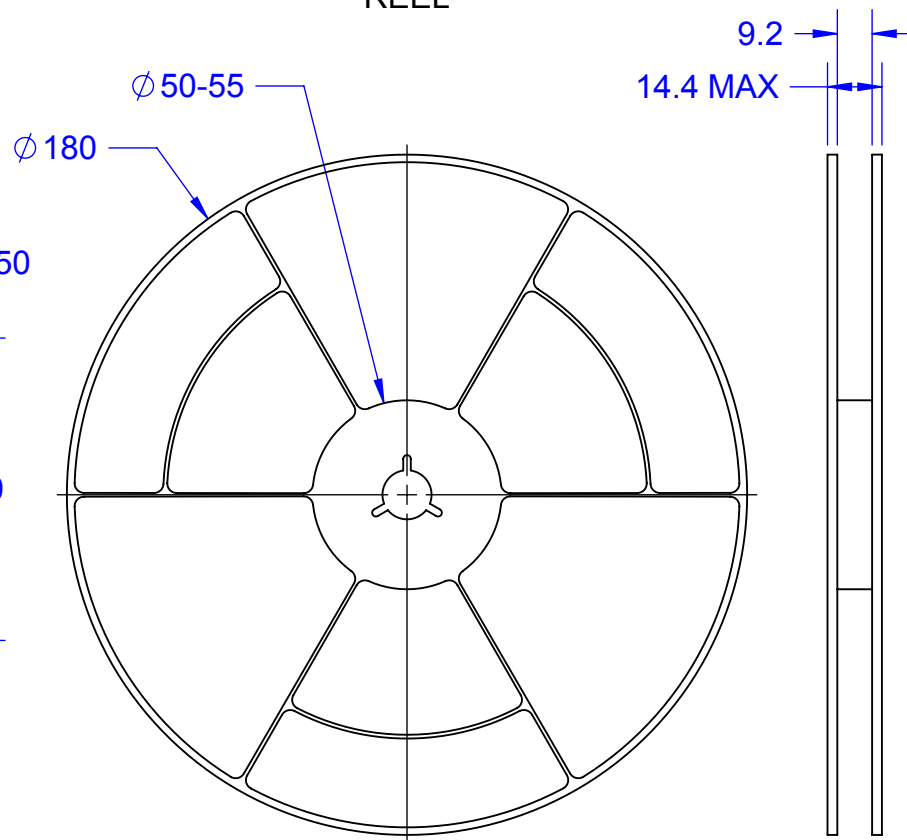
PART NUMBER	SHORTED PINS	NOTES	RoHS Pb-FREE	MSL LEVEL	HALOGEN FREE	GRADE	TOP MARK
SOT523E7A-TIN	N/A	DUMMY	YES	1	YES	COMMERCIAL	N/A
SOT523E7A-T-ISO	NONE	FULLY ISOLATED	YES	1	YES	COMMERCIAL	ISO
SOT523E7A-T-DC13	1-3	1-WIRE	YES	1	YES	COMMERCIAL	13
SOT523E7A-T-DC23	2-3	1-WIRE	YES	1	YES	COMMERCIAL	23
SOT523E7A-T-DC123	1-2-3	2-WIRES	YES	1	YES	COMMERCIAL	-

TopLine®			
TITLE		SOT523F JUMPER DAISY CHAIN	
SCALE	SIZE	DRAWING NO.	REV
20:1	A	121523	A
DO NOT SCALE DRAWING			SHEET 4 OF 7

TAPE SPECIFICATION FOR SOT523G
SURFACE MOUNT DEVICE



REEL

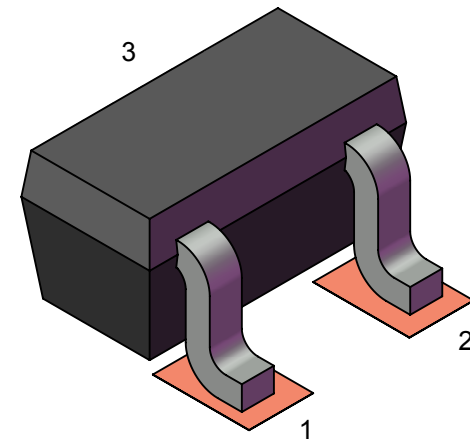
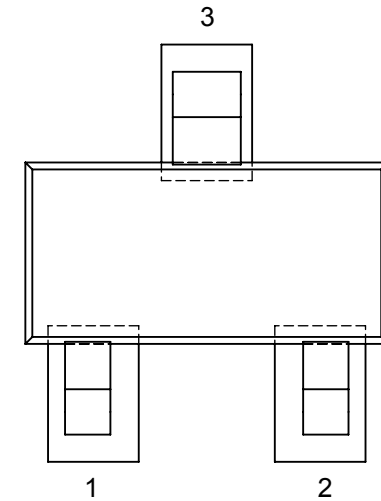
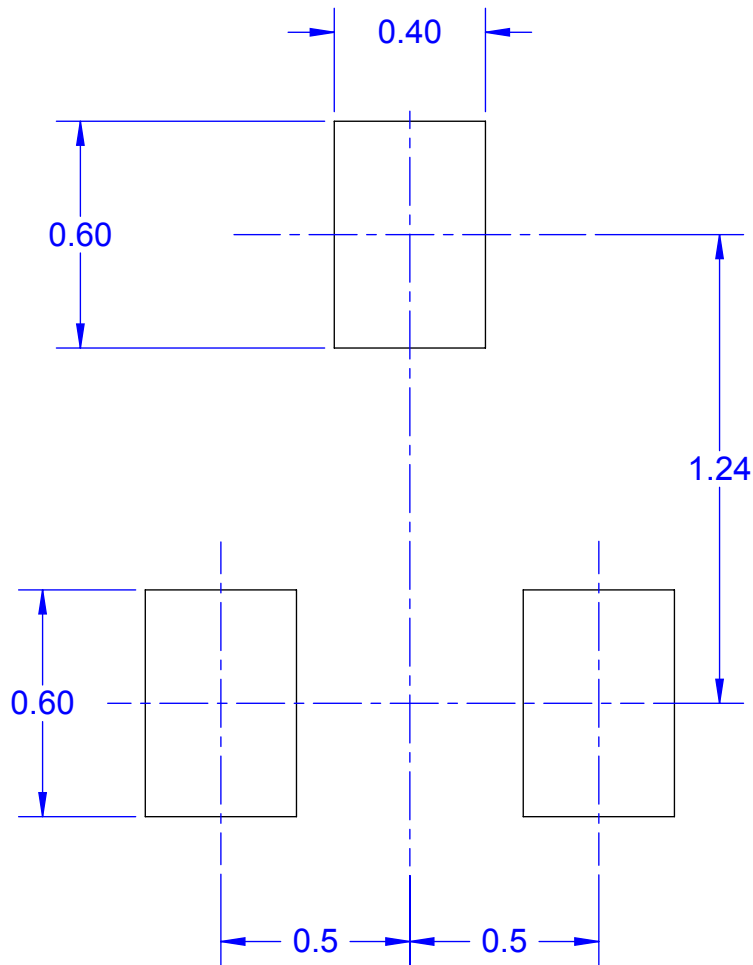


180mm (7") REEL - 3000PCS
100mm (4") REEL - 500 PCS
OTHER QUANTITY AVAILABLE

ALL DIMENSIONS IN mm.

TopLine®			
TITLE		SOT523 JUMPER DAISY CHAIN	
SCALE	SIZE	DRAWING NO.	REV
	A	120523	A
DO NOT SCALE DRAWING			SHEET 5 OF 7

PC BOARD LAND PATTERN

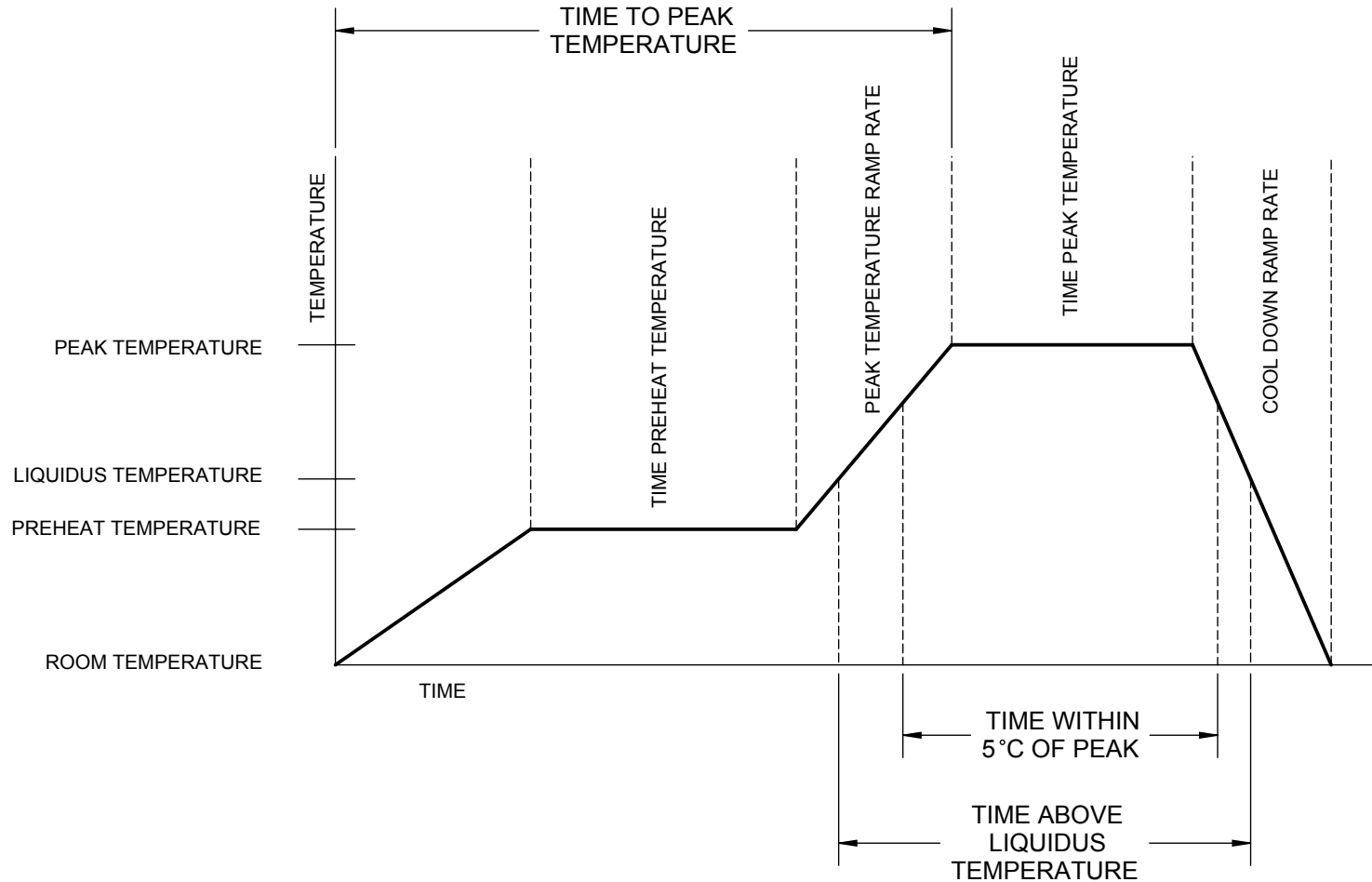


Notes: (Unless Otherwise Specified).

- 1) DIMENSIONS IN mm.
- 2) PCB BOARD DIMENSIONS ARE PRESENTED ONLY AS A GUIDELINE. DESIGNERS SHOULD USE THEIR OWN EXPERIENCE WHEN DESIGNING PCB.

TopLine®			
TITLE		SOT523 JUMPER DAISY CHAIN	
SCALE	SIZE	DRAWING NO.	REV
50:1	A	120523	A
DO NOT SCALE DRAWING			SHEET 6 OF 7

LEAD FREE REFLOW PROFILE OF SMD PACKAGE



DESCRIPTION	REQUIREMENT
AVERAGE PREHEAT RAMP RATE	3°C /SECOND MAXIMUM
PREHEAT TEMPERATURE	150°C MINIMUM, 200°C MAXIMUM
PREHEAT TIME	60 TO 80 SECONDS
RAMP TO PEAK	3°C /SECOND MAXIMUM
TIME OVER LIQUIDUS (217°C)	60 TO 150 SECONDS
PEAK TEMPERATURE	260°C +0/-5°C
TIME WITHIN 5°C OF PEAK	20 TO 40 SECONDS
RAMP - COOL DOWN	6°C /SECONDS MAXIMUM
TIME 25°C TO PEAK	8 MINUTES MAXIMUM

TopLine®			
TITLE		SOT523 JUMPER DAISY CHAIN	
SCALE	SIZE	DRAWING NO.	REV
	A	120523	A
DO NOT SCALE DRAWING			SHEET 7 OF 7