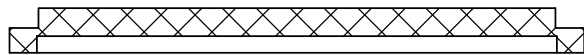
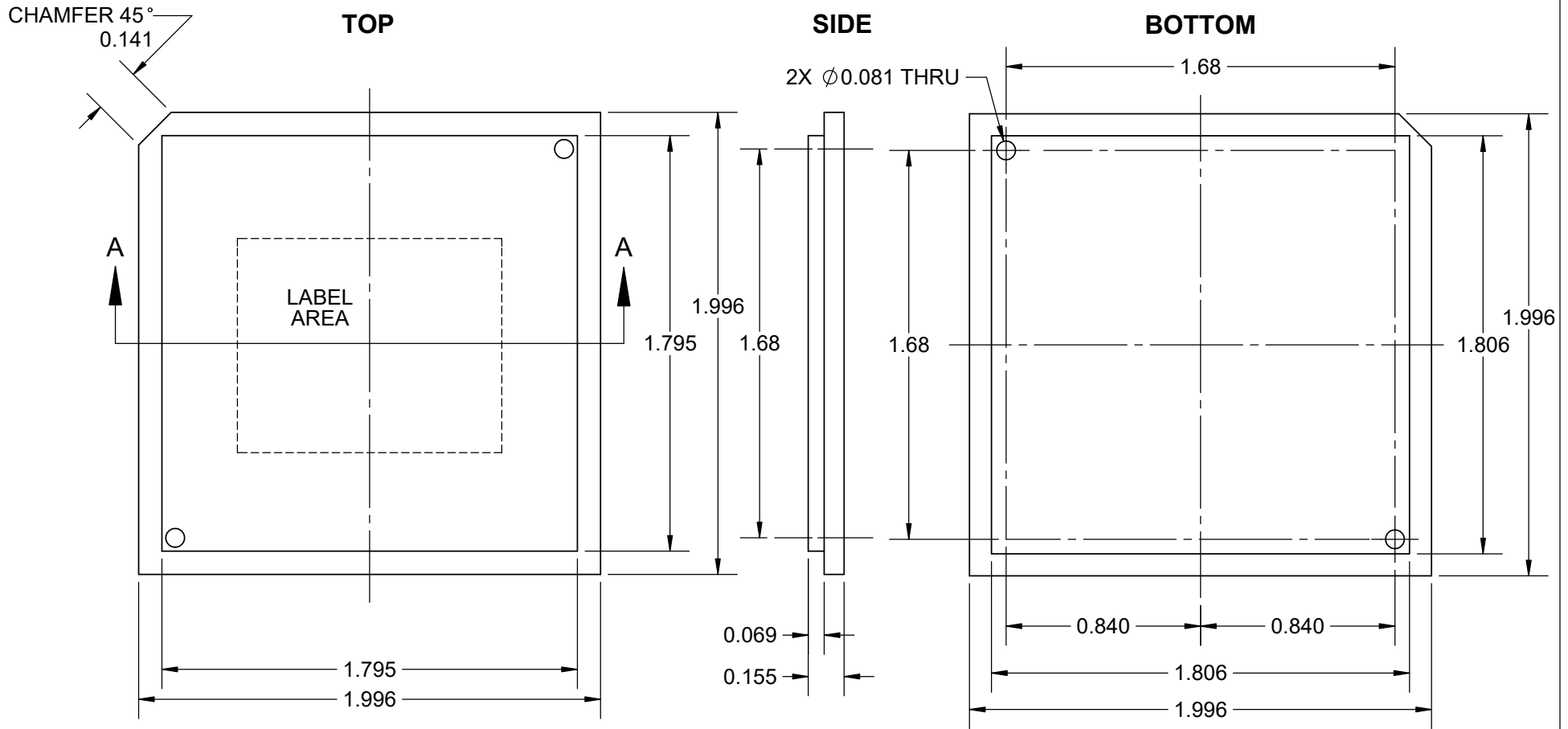
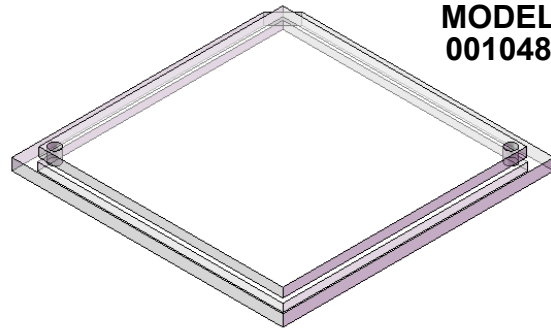


SHOWN WITH SCREWS



SECTION A-A

**MODEL
001048**

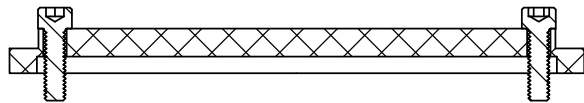
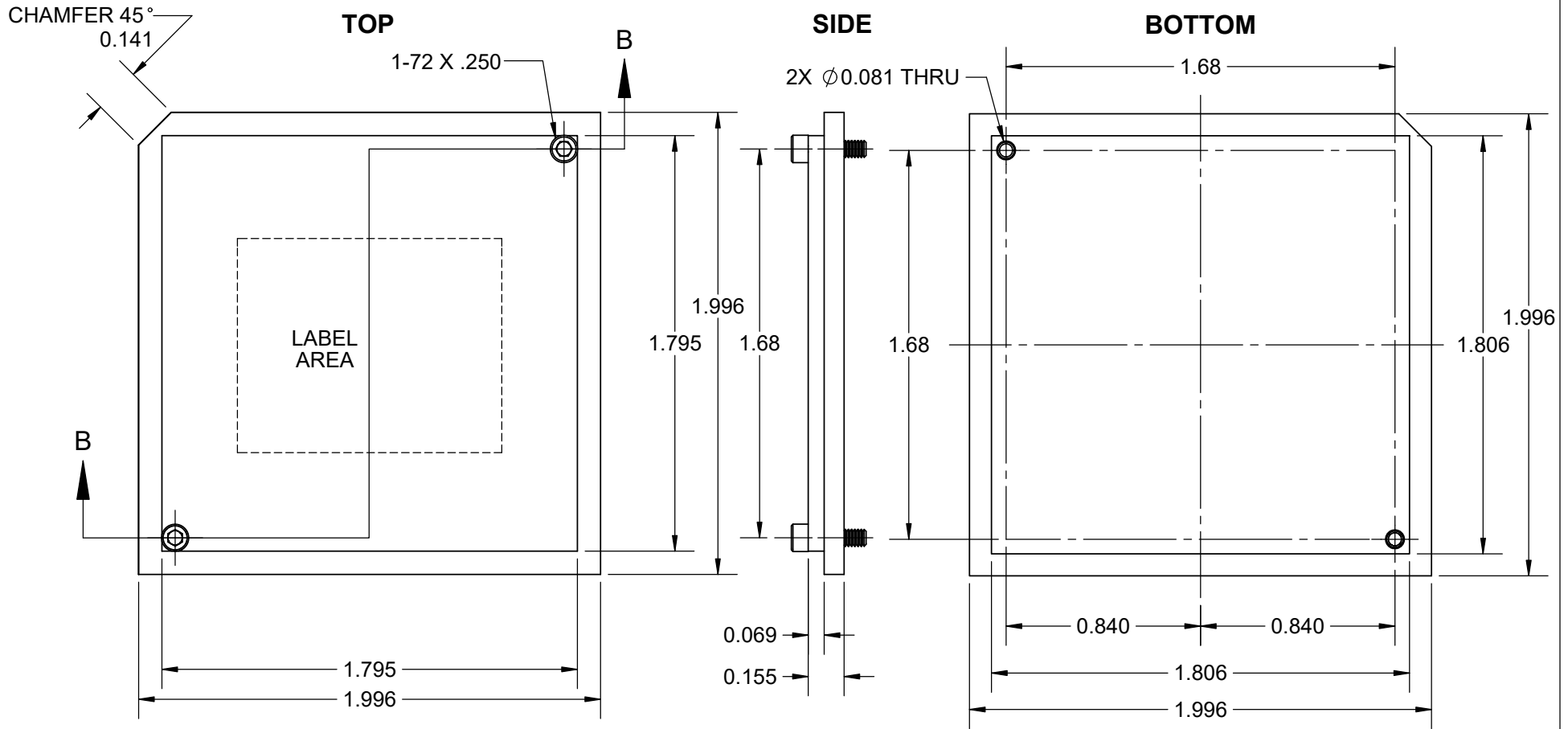


HOLE CHART		
SYMBOL	DIAMETER THRU	QTY HOLES
	Ø0.081	2

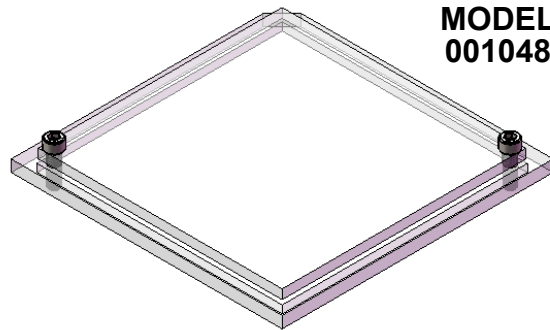
- NOTES: (UNLESS OTHERWISE SPECIFIED).
- 1) DIMENSIONS: INCH.
 - 2) MATERIAL: TRANSPARENT PMMA PLASTIC.
 - 3) ANTISTATIC: $10^{12} \Omega$ SURFACE RESISTANCE.

APPROVALS	DATE				
DRAWN J. Hines	11/26/2016				
ENG M. Hart	11/26/2016	MFG		2-INCH, 1.68 SPACE	
QA		SCALE	SIZE	DRAWING NO.	REV
CUST		1:1	A	001048	A
REVISED		DO NOT SCALE DRAWING			SHEET 1 OF 3

SHOWN WITH SCREWS



SECTION B-B



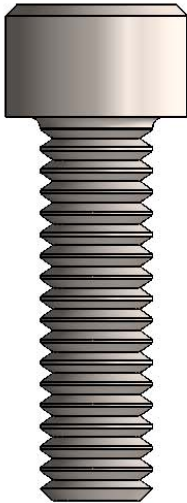
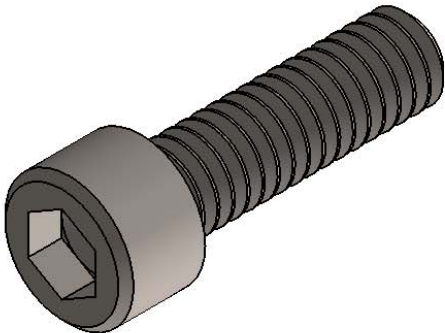
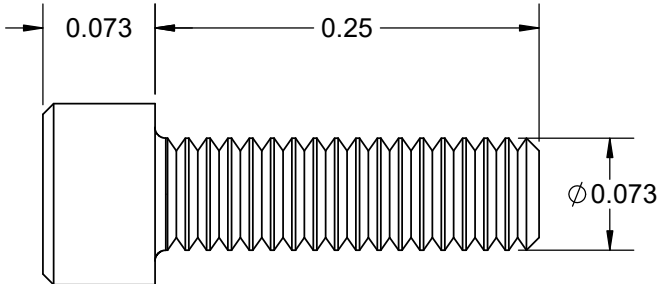
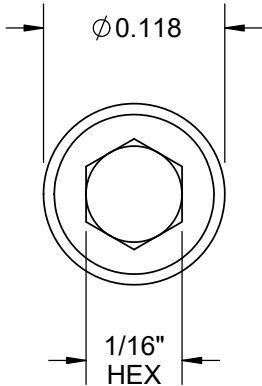
**MODEL
001048**

- NOTES: (UNLESS OTHERWISE SPECIFIED).
 1) DIMENSIONS: INCH.
 2) MATERIAL: TRANSPARENT PMMA PLASTIC.
 3) ANTISTATIC: $10^{12} \Omega$ SURFACE RESISTANCE.

TopLine®			
TITLE FLIP-PACK TOP COVER 2-INCH, 1.68 SPACE			
SCALE 1:1	SIZE A	DRAWING NO. 001048	REV A
DO NOT SCALE DRAWING		SHEET 2 OF 3	

HARDWARE CAP SCREW

MODELS



- NOTES:
 1. DIMENSIONS INCHES (UNLESS OTHERWISE SPECIFIED).
 2. SHAFT MATERIAL: SEE TABLE.
 3. HEAD: SEE TABLE.
 3. COLOR: STAINLESS.

DRILL TABLE						
MATERIAL	THREAD	MAX OD	TAP DRILL Start Hole	CL HOLE Loose Fit	CL HOLE Close Fit	DWG
STAINLESS	1-72	0.073"	0.059"	0.089"	0.081"	707225

TopLine [®]			
TITLE FLIP-PACK TOP COVER™ 2-INCH, 1.68 SPACE			
SCALE 8:1	SIZE A	DRAWING NO. 001048	REV A
DO NOT SCALE DRAWING			SHEET 3 OF 3