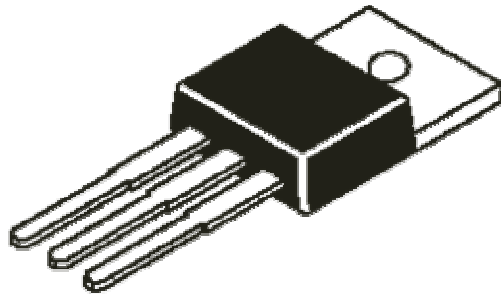




Contact Us:
Tel: 1-800-776-9888
sales@TopLine.tv
www.TopLine.tv

TO220
JEDEC TO-220 Package
TopLine Dummy Component
For training, practice and evaluation



[See Page 2 for Outline Drawing](#)

Quick Specs:

Pin Count 3L - Plastic Body
Pitch 0.10" (2.54mm)

Use and Applications:

IPC Solder Training &
Practice
Equipment Evaluation
Prototype PWB

Availability:

Delivery Stock to 4
weeks

Part Numbers:

SnPb (Tin-Lead)
TO220 = Bulk
TO220M = Tube

Lead Free (RoHS) Pb-Free

TO220-TIN = Bulk
TO220M-TIN

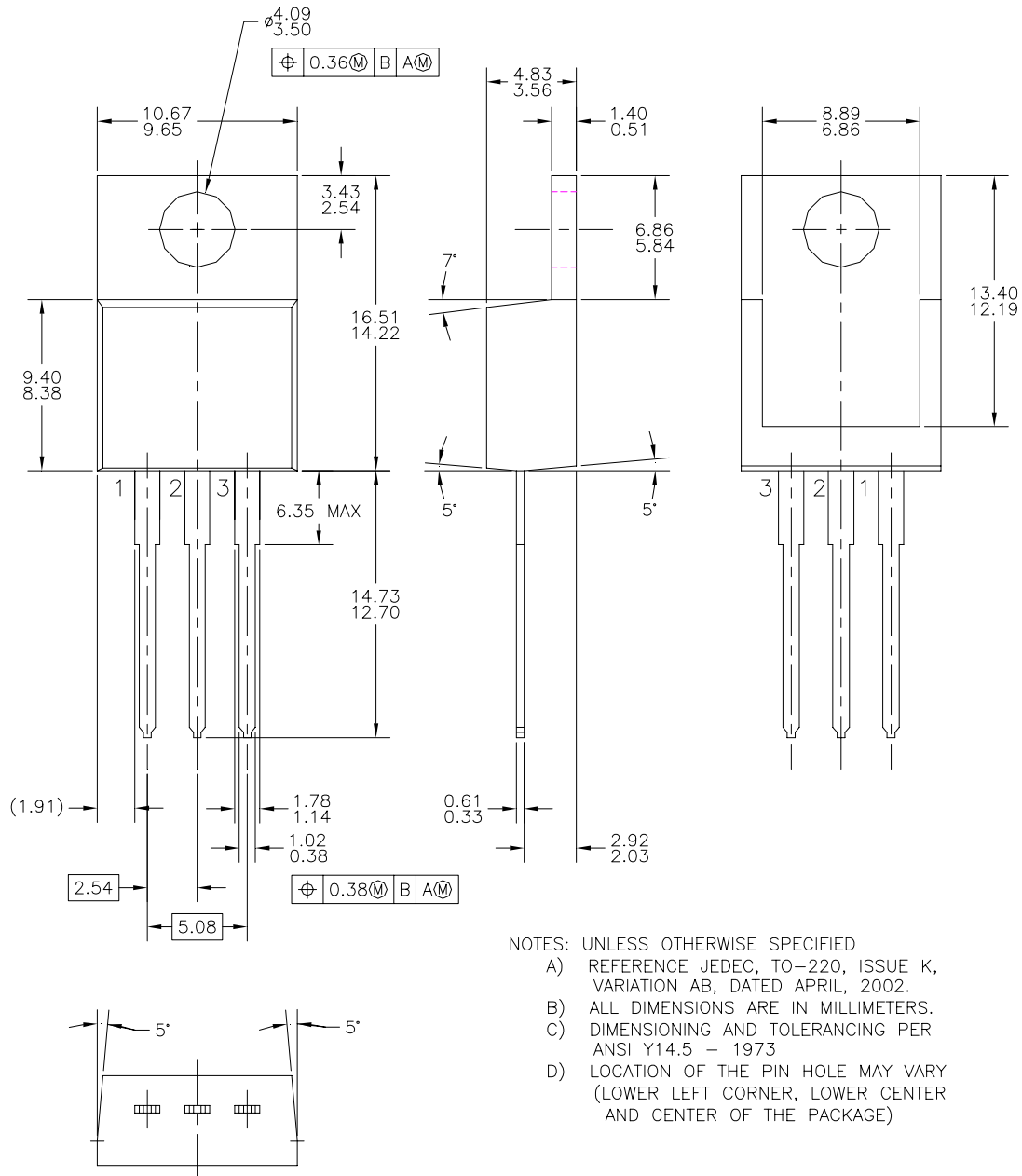
Part Numbering System

TO220	M	-	3	-	Option
JeDEC Series	Packaging	-	Nbr Pins	-	Plating
			Standard: 3= 3 Leads		Blank = SnPb
Plastic Case	Blank = Bulk M = Tubes	-	Special: 2= 2 Leads 5= 5 Leads 7= 7 Leads	-	TIN = Sn100 RoHS Lead Free Pb-Free

Optional Daisy Chain: **DC123** = Pins 1-2-3 connected
Optional **-ISO** Isolated Connections

TopLine Corporation
95 Highway 22 W
Milledgeville, GA 31061, USA
Toll Free USA/Canada (800) 776-9888
International: 1-478-451-5000 • Fax: 1-478-451-3000
Email: sales@topline.tv

TO220-3 Dummy Package Topline



TO-220 Tube Packing

