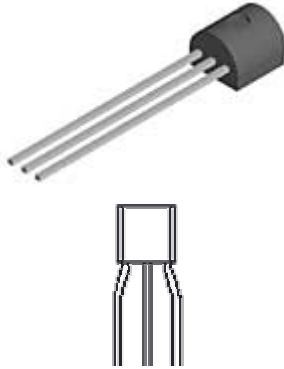




Contact Us:
 Tel: 1-800-776-9888
sales@TopLine.tv
www.TopLine.tv

TO92
JEDEC TO-92 Package
TopLine Dummy Component
For training, practice and evaluation



[See Page 2-3 for Outline Drawing](#)

Quick Specs:
 Pin Count 3L - Plastic Body
 Pitch 0.050" (1.27mm)
 Pitch 0.100" (2.54mm) Optional

Use and Applications:
 IPC Solder Training & Practice
 Equipment Evaluation
 Prototype PWB

Availability:
 Delivery Stock to 4 weeks

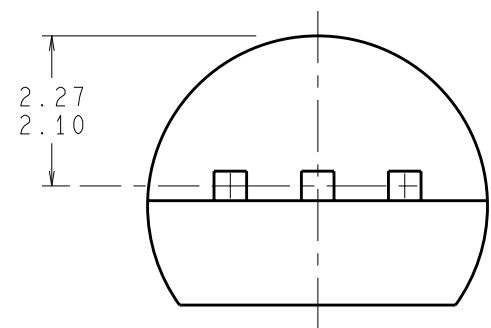
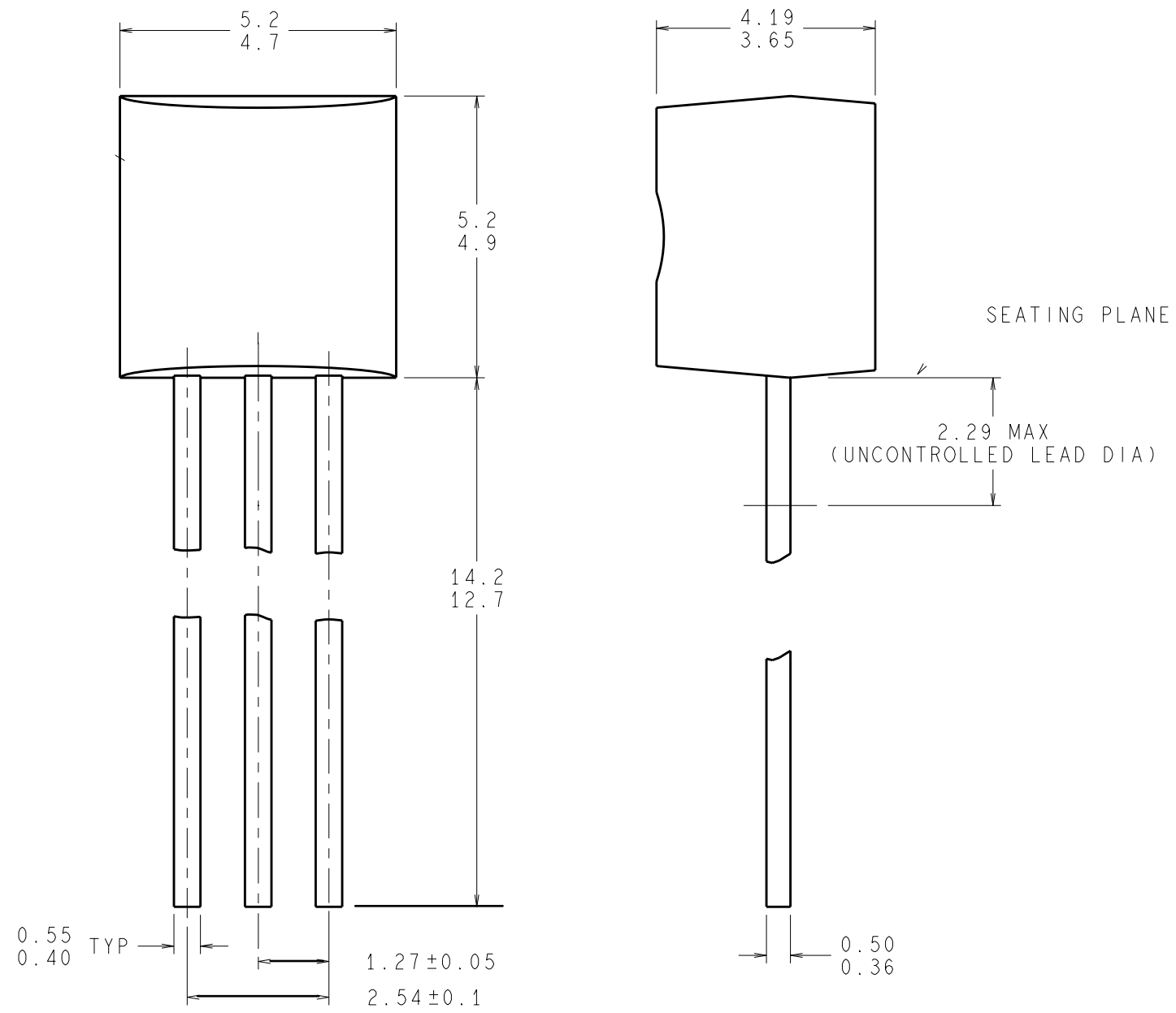
Part Numbers:
SnPb (Tin-Lead)
 TO92 = 0.050" (1.27mm) Pitch
 TO92-.2 = 0.10" (2.54mm) Pitch
 TO92A-.2 = 0.10" (2.54mm) Pitch
 TO92TR-.2 = 0.10" (2.54mm) Pitch

Lead Free (RoHS) Pb-Free
 TO92-TIN = 0.050" (1.27mm) Pitch
 TO92-.2-TIN = 0.10" (2.54mm) Pitch
 TO92A-.2-TIN = 0.10" (2.54mm) Pitch

Part Numbering System

TO92	A	-	.2	-	Option
Jedec Series	Packaging	-	Pitch	-	Plating
					Blank = SnPb
Plastic Case	Blank = Bulk A = Ammo Tape TR= Tape & Reel	-	Blank = 0.050" 1.27mm .2 = 0.10" 2.54mm	-	TIN = Sn100 RoHS Lead Free Pb-Free

TopLine Corporation
 95 Highway 22 W
 Milledgeville, GA 31061, USA
Toll Free USA/Canada (800) 776-9888
 International: 1-478-451-5000 • Fax: 1-478-451-3000
 Email: sales@topline.tv



DIMENSIONS ARE IN MILLIMETERS

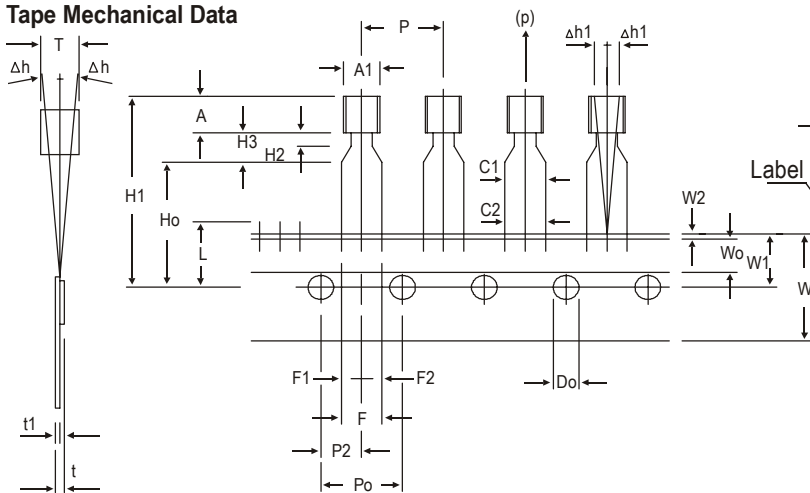
NOTES: UNLESS OTHERWISE SPECIFIED

1. STANDARD LEAD FINISH:
LEAD/TIN 40/60 OVER COPPER A194 OR EQUIVALENT.
2. REFERENCE JEDEC REGISTRATION TO-226, VARIATION AA.

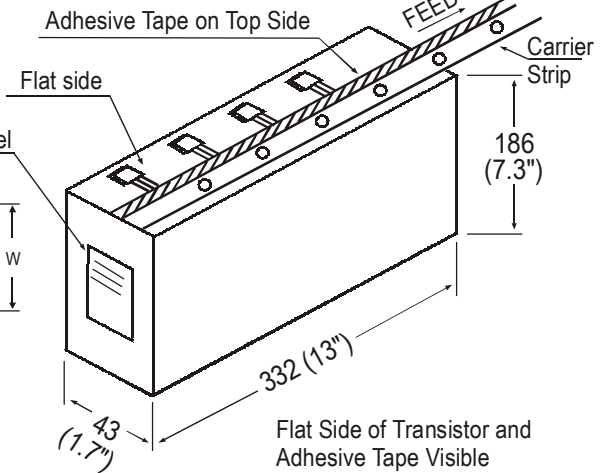
**TO-92, MOLDED,
3 LEAD**

TO-92 Transistors on Tape and Ammo Pack

Tape Mechanical Data



Ammo Pack Style



All dimensions are in mm

ITEM	SYMBOL	SPECIFICATION			
		MIN.	NOM.	MAX.	TOL.
BODY WIDTH	A1	4.0		4.8	
BODY HEIGHT	A	4.8		5.2	
BODY THICKNESS	T	3.9		4.2	
PITCH OF COMPONENT	P		12.7		± 1.0
*1 FEED HOLE PITCH	Po		12.7		± 0.3
*2 FEED HOLE CENTRE TO COMPONENT CENTRE	P2		6.35		± 0.4
DISTANCE BETWEEN OUTER LEADS	F		5.08		+ 0.6 - 0.2
*3 COMPONENT ALIGNMENT SIDE VIEW	Δh		0	1.0	
*4 COMPONENT ALIGNMENT FRONT VIEW	Δh1		0	1.3	
TAPE WIDTH	W		18		± 0.5
HOLD-DOWN TAPE WIDTH	Wo		6		± 0.2
HOLE POSITION	W1		9		+ 0.7 - 0.5
HOLD-DOWN TAPE POSITION	W2		0.5		± 0.2
LEAD WIRE CLINCH HEIGHT	Ho		16		± 0.5
COMPONENT HEIGHT	H1			23.25	
LENGTH OF SNIPPED LEADS	L			11.0	
FEED HOLE DIAMETER	Do		4		± 0.2
*5 TOTAL TAPE THICKNESS	t			1.2	
LEAD - TO - LEAD DISTANCE	F1, F2		2.54		+ 0.4 - 0.1
STAND OFF	H2	0.45		1.45	
CLINCH HEIGHT	H3			3.0	
LEAD PARALLELISM	C1 - C2			0.22	
PULL - OUT FORCE	(p)	6N			

NOTES

1. Maximum alignment deviation between leads will not to be greater than 0.2mm.
2. Maximum non-cumulative variation between tape feed holes shall not exceed 1 mm in 20 pitches.
3. Holddown tape will not exceed beyond the edge(s) of carrier tape and there shall be no exposure of adhesive.
4. There will be no more than three (3) consecutive missing components in a tape.
5. A tape trailer, having at least three feed holes are provided after the last component in a tape.
6. Splices should not interfere with the sprocket feed holes.

REMARKS

- *1 Cumulative pitch error 1.0 mm/20 pitch
- *2 To be measured at bottom of clinch
- *3 At top of body
- *4 At top of body
- *5 t1 0.3 – 0.6 mm

Packing Details

PACKAGE	STANDARD PACK		INNER CARTON BOX		OUTER CARTON BOX		
	Details	Net Weight/Qty	Size	Qty	Size	Qty	Gr Wt
TO-92 Bulk	1K/bag	200 gm/1K pcs	3" x 7.5" x 7.5"	5K	17" x 15" x 13.5"	80K	23 kgs
TO-92 A	2K/ammo box	645 gm/2K pcs	12.5" x 8" x 1.8"	2K	17" x 15" x 13.5"	32K	12.5 kgs