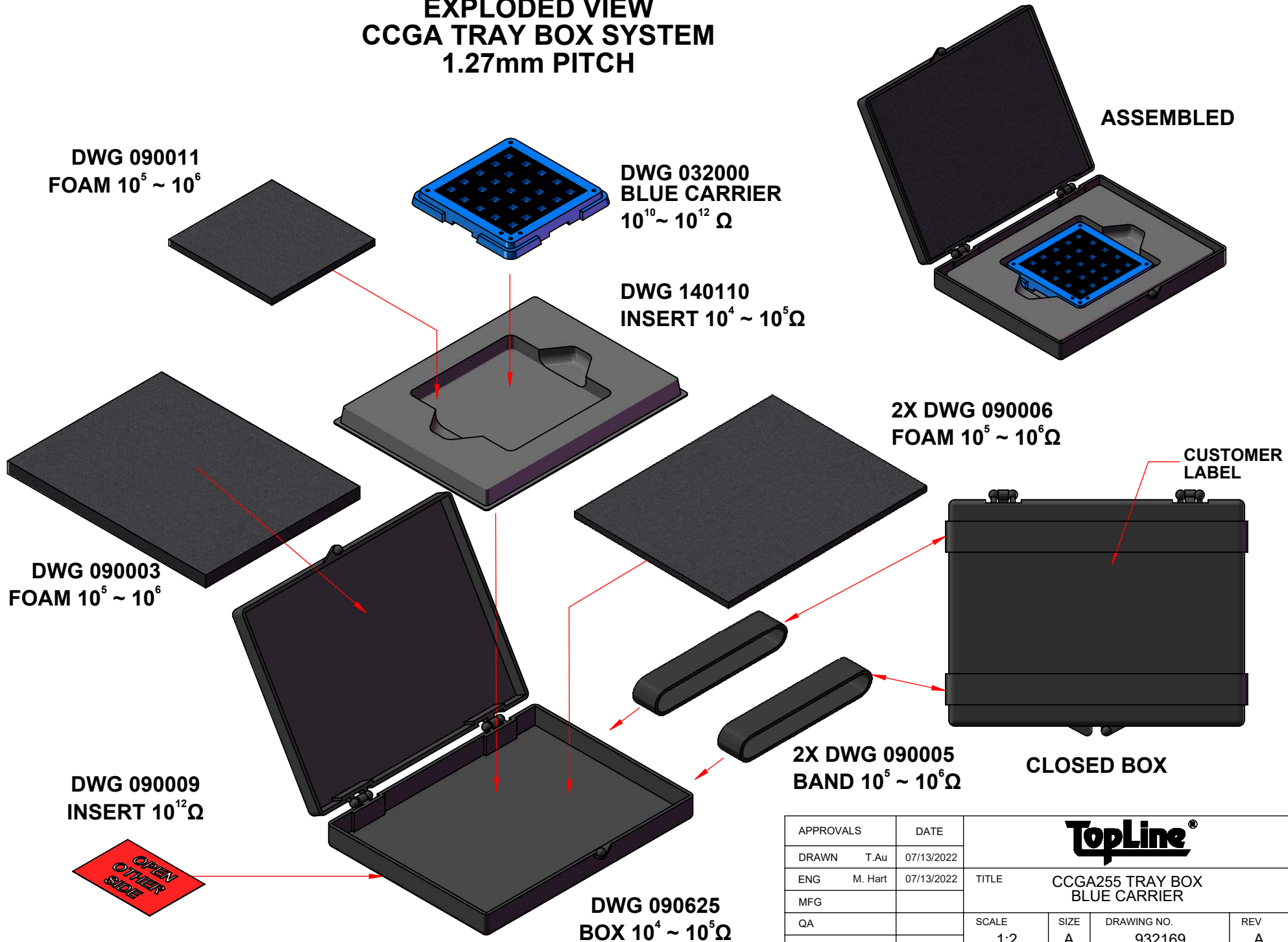
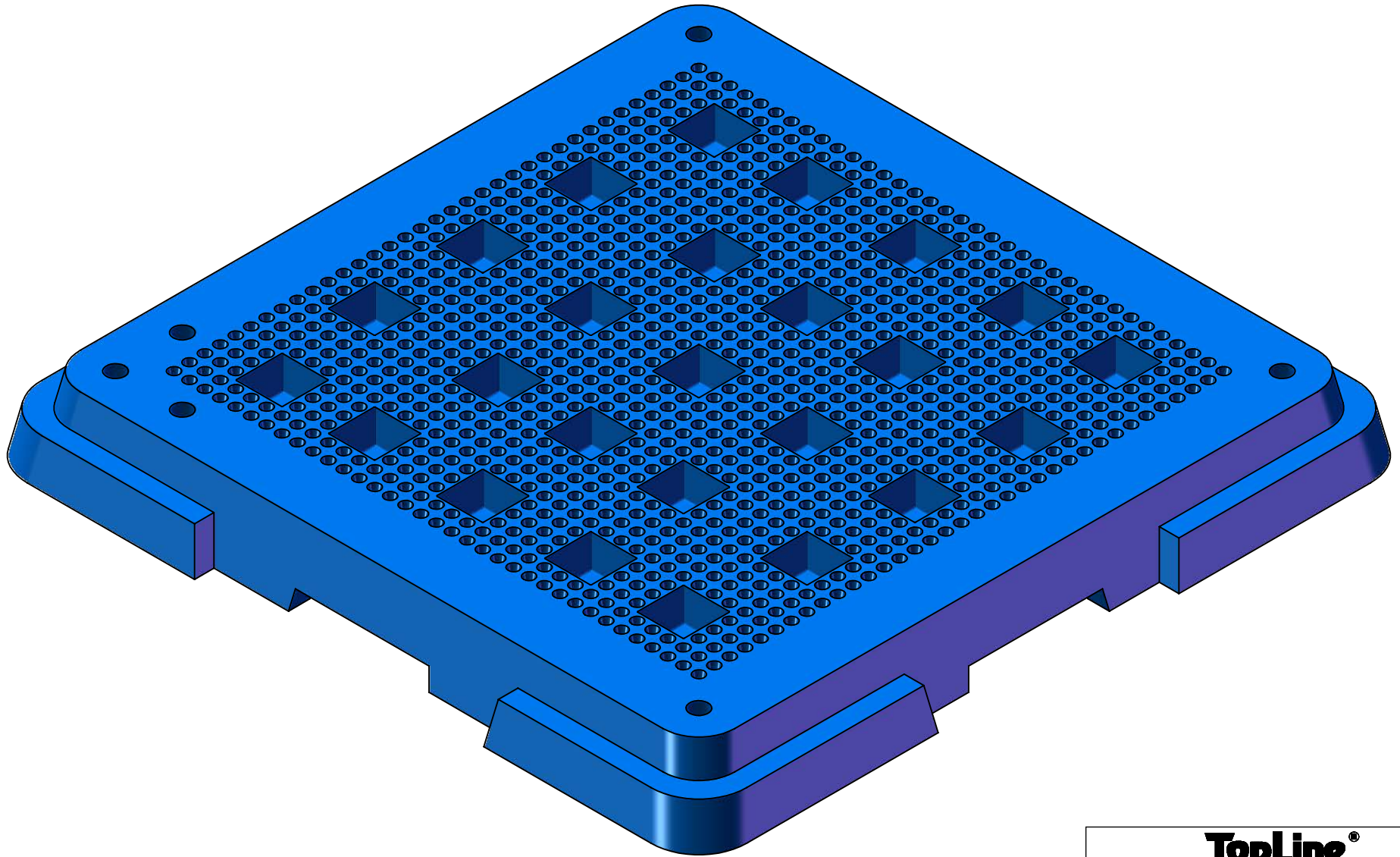


EXPLODED VIEW CCGA TRAY BOX SYSTEM 1.27mm PITCH



| | | | | | |
|-------------|------------|--|------|-------------|---------------|
| APPROVALS | DATE | TopLine® | | | |
| DRAWN T. Au | 07/13/2022 | | | | |
| ENG M. Hart | 07/13/2022 | TITLE CCGA255 TRAY BOX BLUE CARRIER | | | |
| MFG | | SCALE | SIZE | DRAWING NO. | REV |
| QA | | 1:2 | A | 932169 | A |
| CUST | | DO NOT SCALE DRAWING | | | SHEET 1 OF 11 |
| REVISED | | | | | |

MODEL
TOP



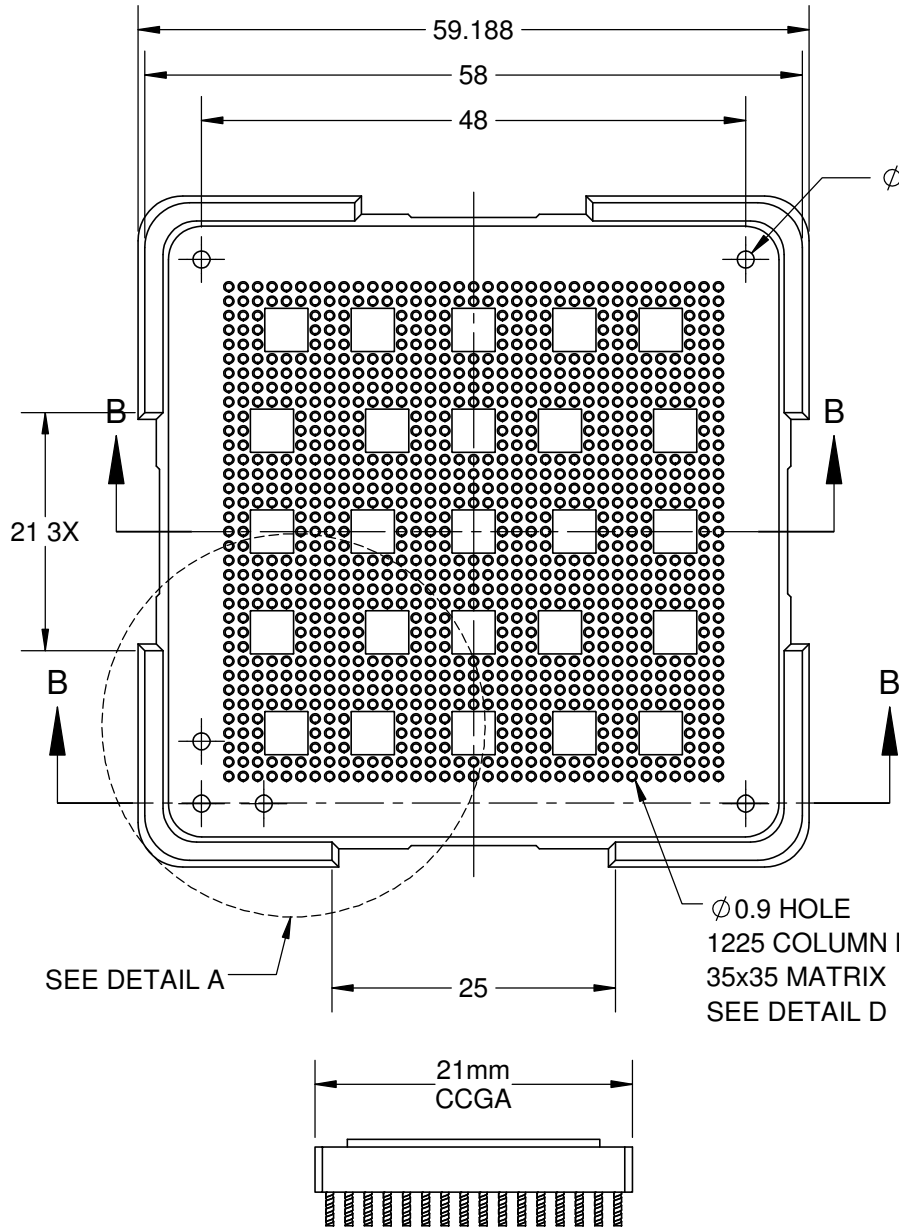
TopLine®

TITLE CCGA255 TRAY BOX
BLUE CARRIER

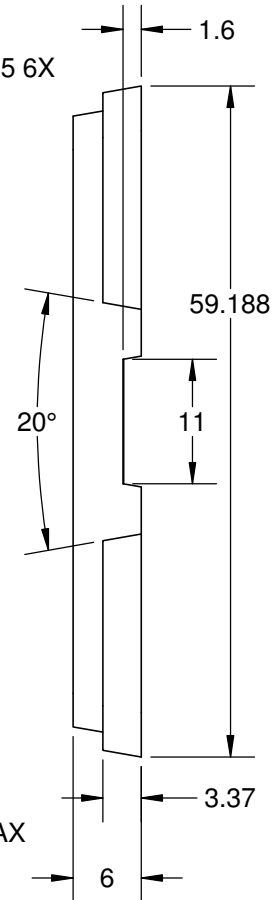
| | | | |
|--------------|-----------|-----------------------|----------|
| SCALE 3:1 | SIZE A | DRAWING NO. 932169 | REV A |
|--------------|-----------|-----------------------|----------|

DO NOT SCALE DRAWING SHEET 2 OF 11

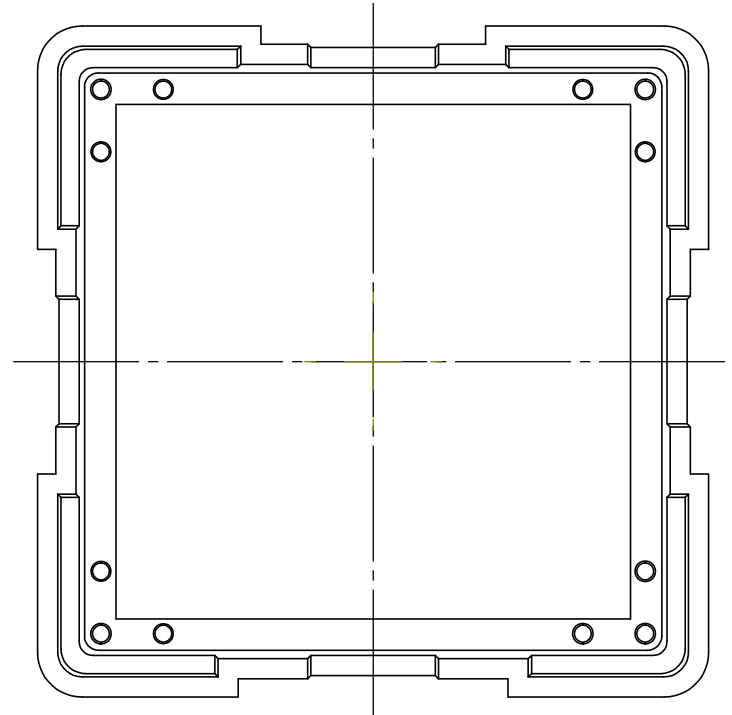
TOP



SIDE

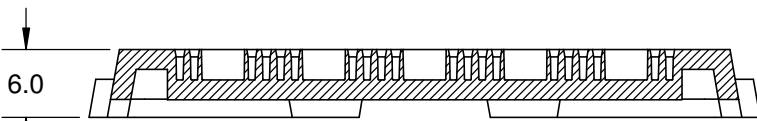


BOTTOM



NOTES:

1. DIMENSION MM.
2. MATERIAL: BLUE ABS PERMASTAT® 600
3. TEMPERATURE 60° MAX.
4. MASS 15.1 GRAMS.
5. PERMANENT ESD ANTI-STATIC
6. SURFACE RESISTIVITY $10^{10} \sim 10^{12} \Omega$

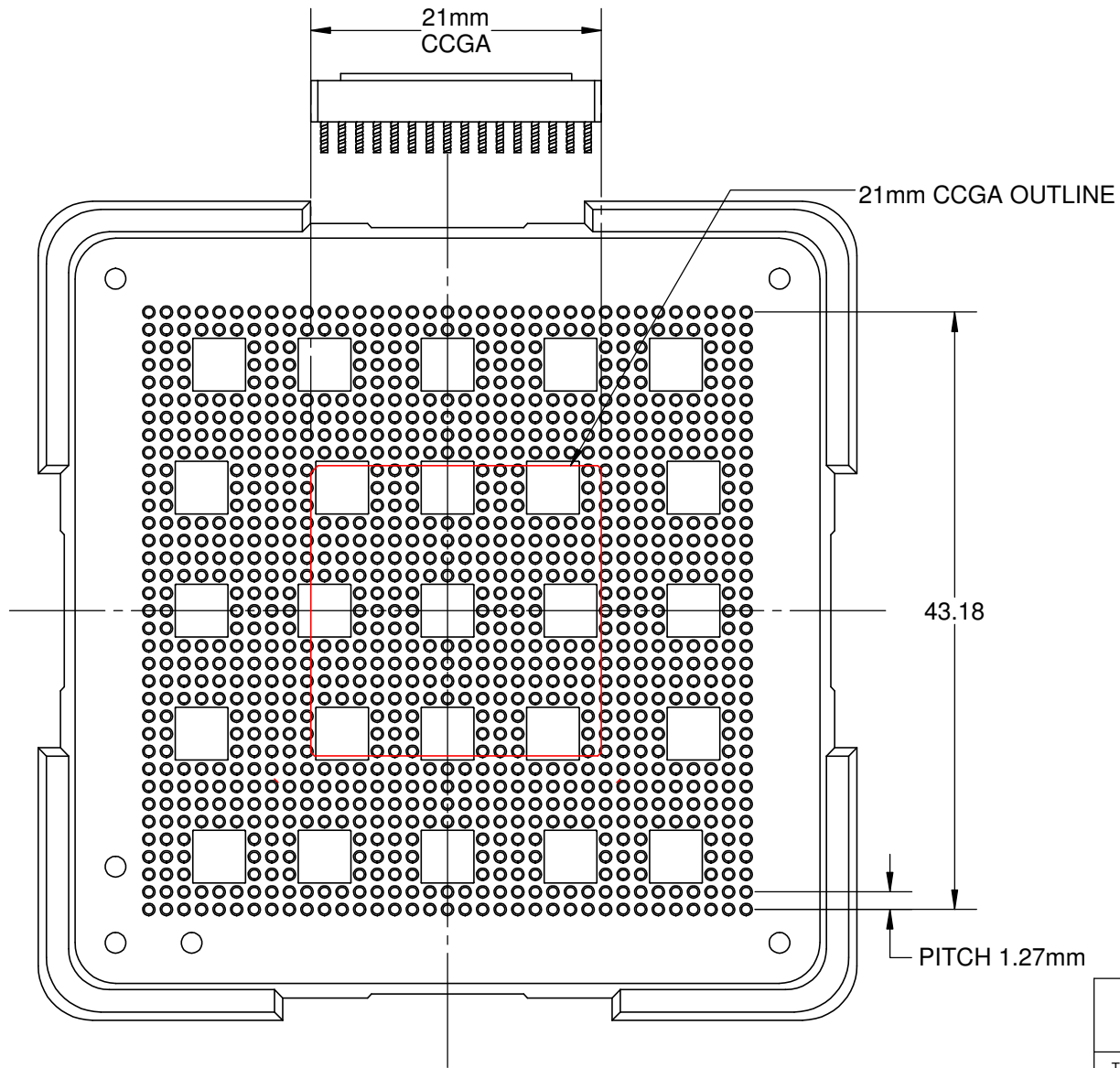


SECTION B-B

TopLine®

| | | | |
|----------------------------------|------|-------------|---------------|
| TITLE | | | |
| CCGA255 TRAY BOX BLUE CARRIER | | | |
| SCALE | SIZE | DRAWING NO. | REV |
| 3:2 | A | 932169 | A |
| DO NOT SCALE DRAWING | | | SHEET 3 OF 11 |

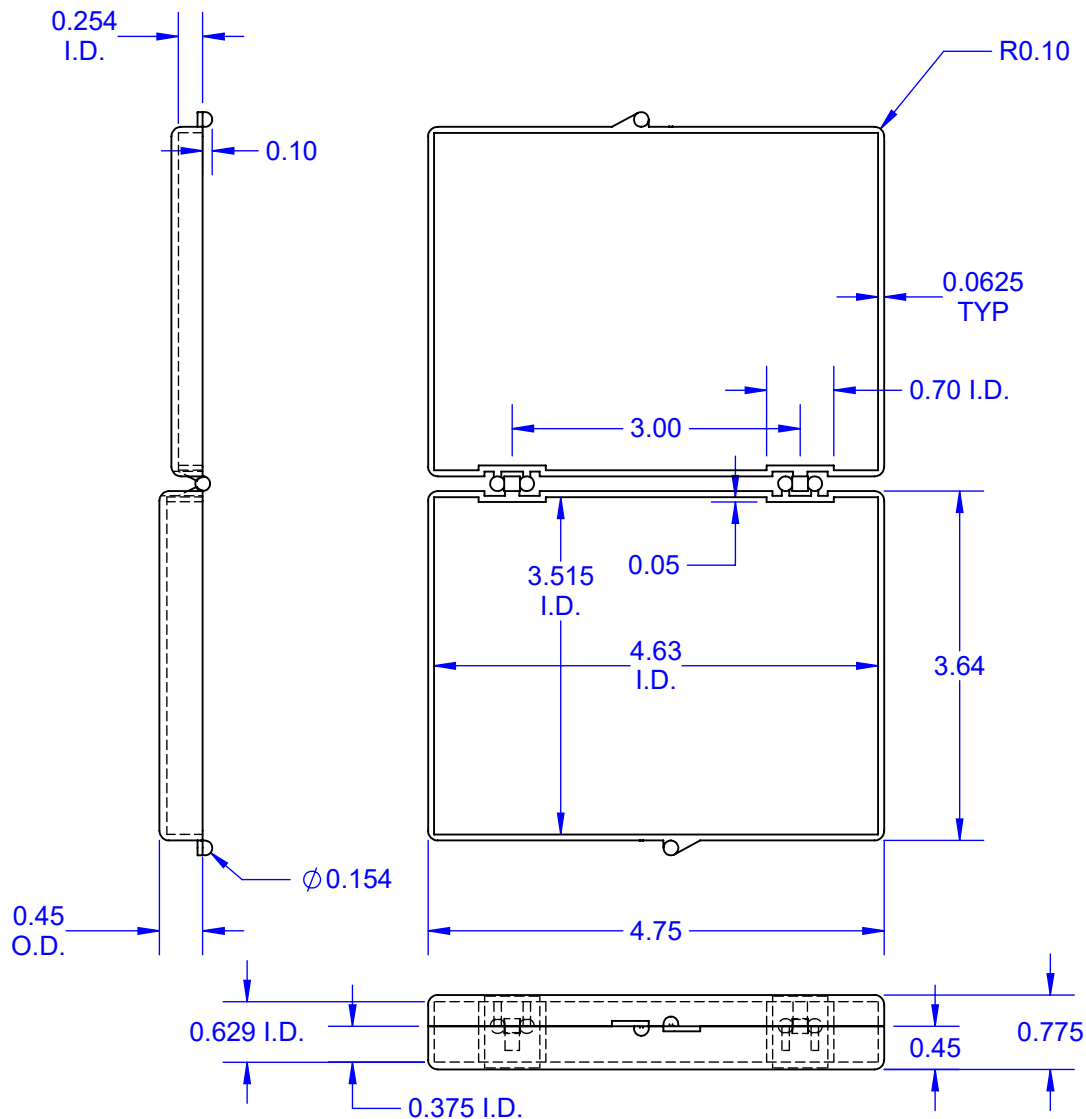
DETAIL D



- NOTES:
 1. DIMENSIONS MM.
 2. NOT TO SCALE

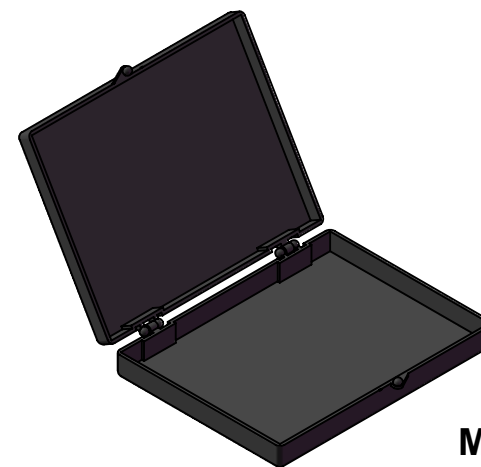
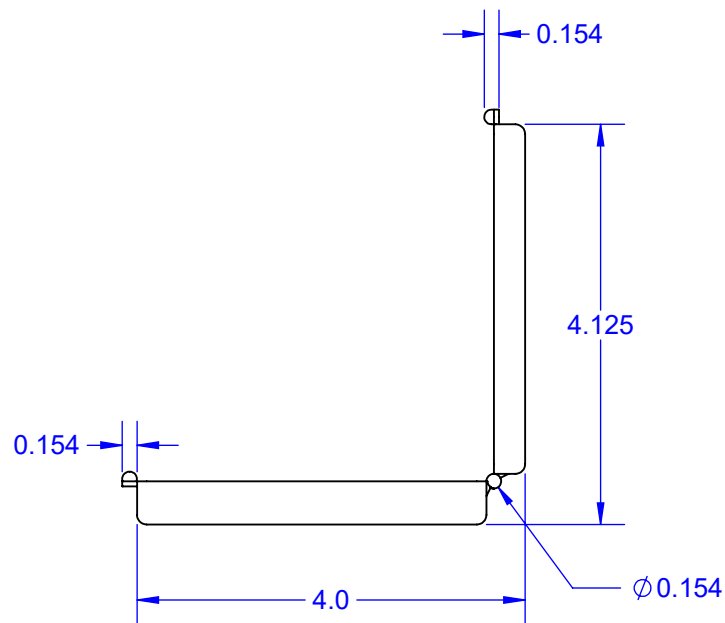
| | | | |
|----------------------|------|----------------------------------|---------------|
| TopLine® | | | |
| TITLE | | CCGA255 TRAY BOX BLUE CARRIER | |
| SCALE | SIZE | DRAWING NO. | REV |
| 2:1 | A | 932169 | A |
| DO NOT SCALE DRAWING | | | SHEET 4 OF 11 |

TOP (OPEN)



FRONT (CLOSED)

SIDE VIEW (OPEN)



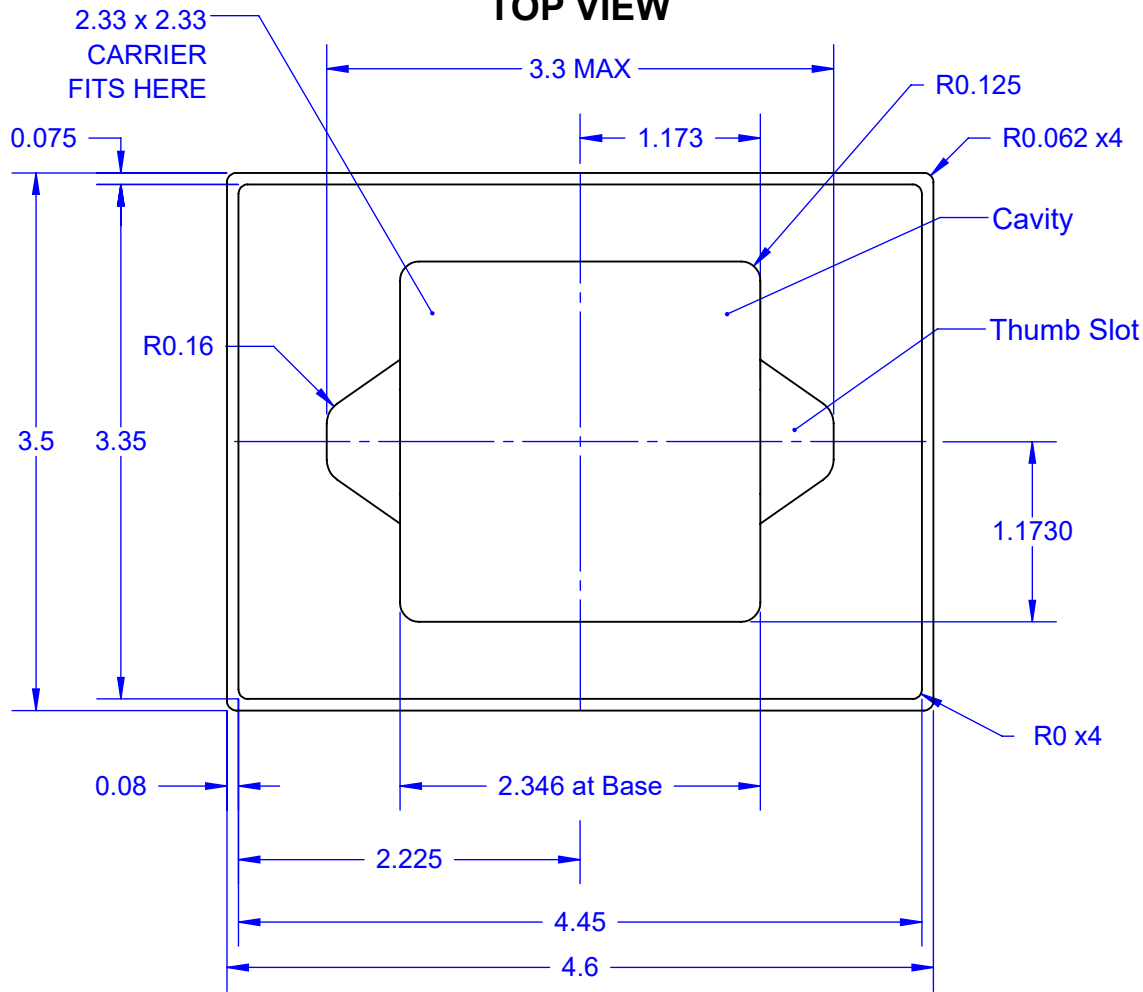
MODEL

Notes: (Unless Otherwise Specified).

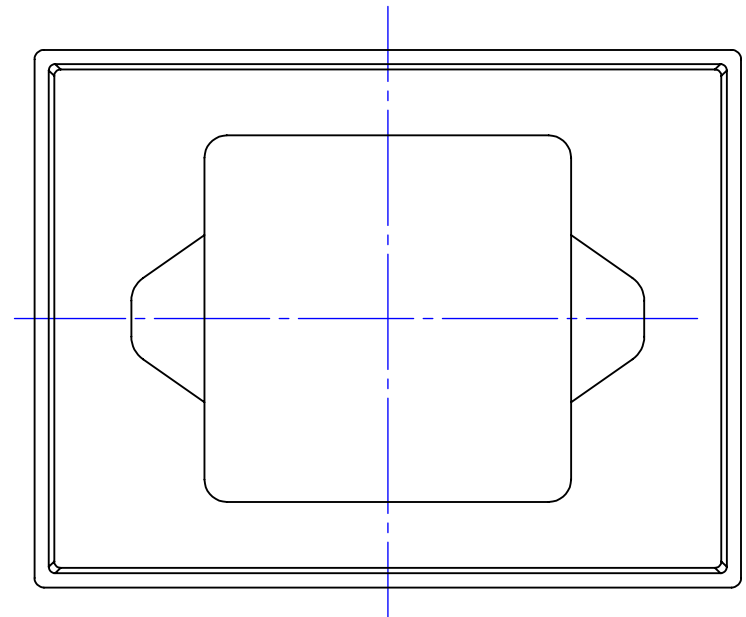
- 1) SURFACE RESISTIVITY: $10^3 \Omega$ TO $10^6 \Omega$ PER SQUARE.
- 2) MATERIAL: CARBON FILLED POLYPROPYLENE.
- 3) DIMENSIONS IN INCHES.

| | | | | | |
|-------------|------------|--------------------------------------|-----------|-----------------------|---------------|
| APPROVALS | DATE | TopLine® | | | |
| DRAWN T. Au | 07/13/2022 | | | | |
| ENG M. Hart | 07/13/2022 | TITLE EC1-15mm EMPTY HINGE BOX | | | |
| MFG | | SCALE 1:2 | SIZE A | DRAWING NO. 090625 | REV A |
| QA | | | | | |
| CUST | | DO NOT SCALE DRAWING | | | SHEET 5 OF 11 |
| REVISED | | | | | |

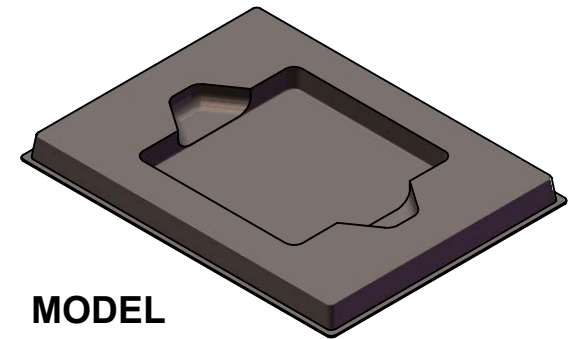
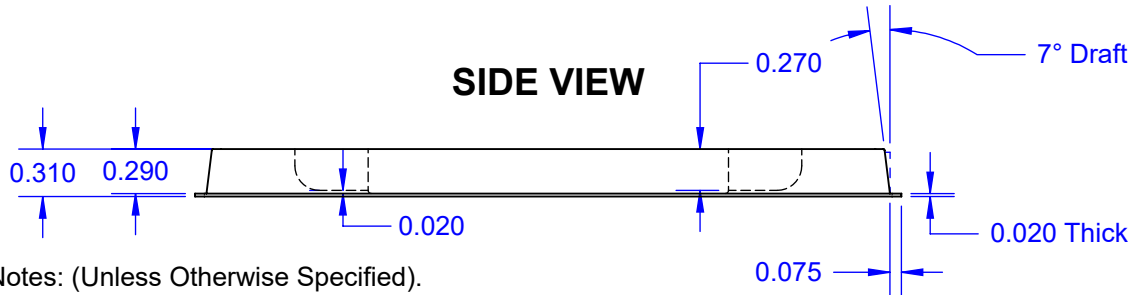
TOP VIEW



BOTTOM VIEW



SIDE VIEW



MODEL

Notes: (Unless Otherwise Specified).

- 1) DIMENSIONS: INCHES.
- 2) MATERIAL: CONDUCTIVE STYRENE.
- 3) SURFACE RESISTIVITY <math>< 10^4 \Omega</math>.

TopLine®

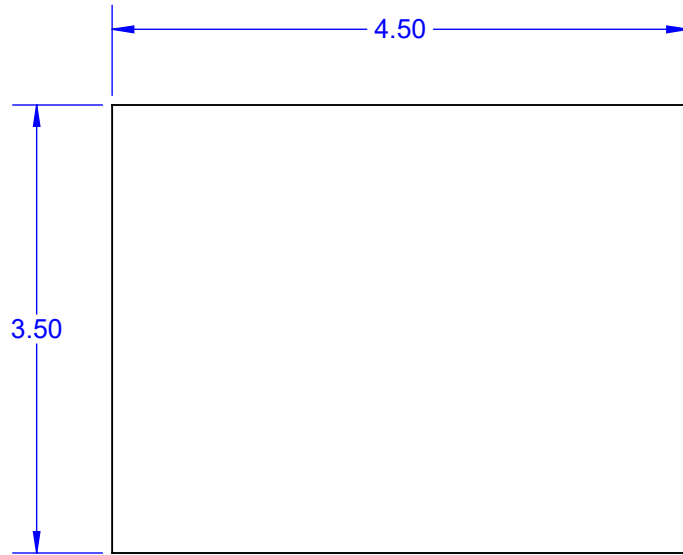
TITLE CCGA TRAY INSERT
FOR 4.625 x 3.5 HINGE BOX

| SCALE | SIZE | DRAWING NO. | REV |
|-------|------|-------------|-----|
| 2:2.5 | A | 140110 | A |

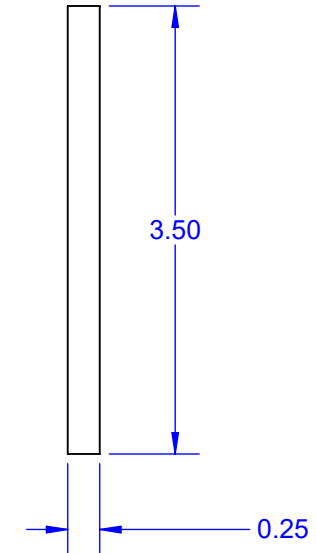
DO NOT SCALE DRAWING

SHEET 6 OF 11

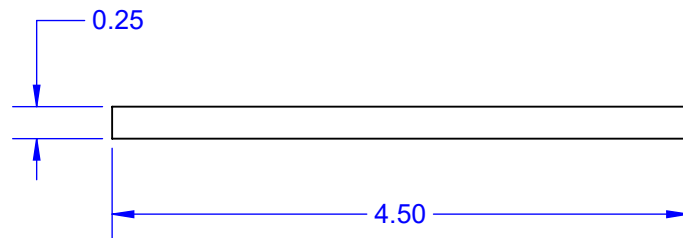
TOP



EDGE



SIDE



Notes: (Unless Otherwise Specified).

1) SURFACE RESISTIVITY: $10^5\Omega$ TO $10^6\Omega$.

3) DENSITY 1.7 PFC Min.

4) DIMENSIONS IN INCHES

TopLine[®]

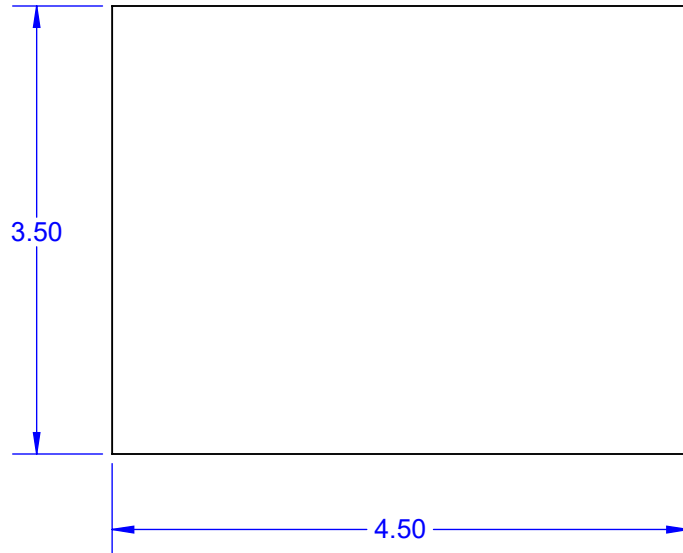
TITLE EC1-FOAM-SOFT-.25-A
LOW DENSITY FOAM

| SCALE | SIZE | DRAWING NO. | REV |
|-------|------|-------------|-----|
| 1:1.5 | A | 090003 | A |

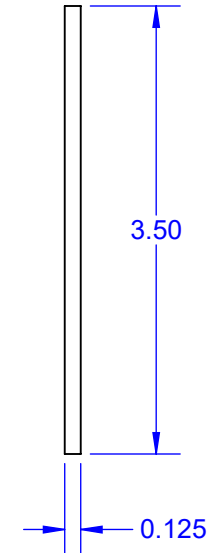
DO NOT SCALE DRAWING

SHEET 7 OF 11

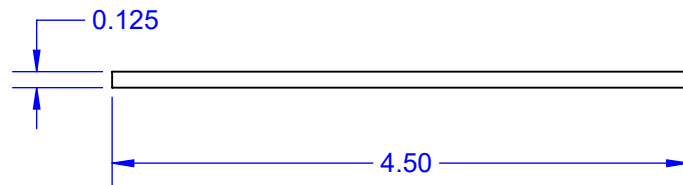
TOP



EDGE



SIDE

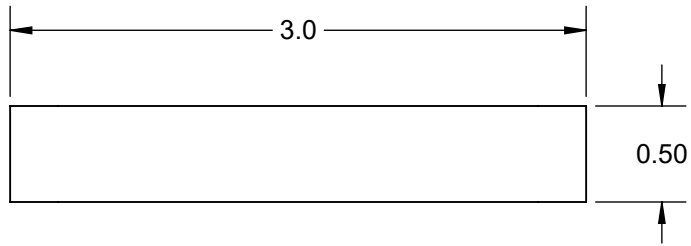


MODEL

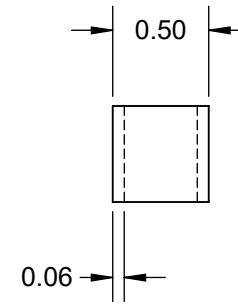
- Notes: (Unless Otherwise Specified).
- 1) SURFACE RESISTIVITY: $10^5 \sim 10^6 \Omega$
 - 3) DENSITY 1.7 PFC Min.
 - 4) DIMENSIONS IN INCHES.

| | | | |
|---|------|-------------|---------------|
| TopLine® | | | |
| TITLE EC1-FOAM-SOFT-.125-A LOW DENSITY FOAM | | | |
| SCALE | SIZE | DRAWING NO. | REV |
| 1:1.5 | A | 090006 | A |
| DO NOT SCALE DRAWING | | | SHEET 8 OF 11 |

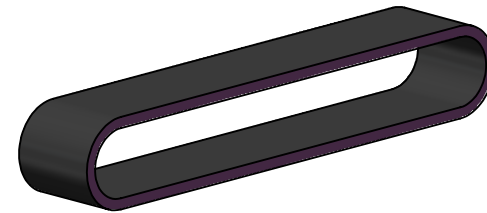
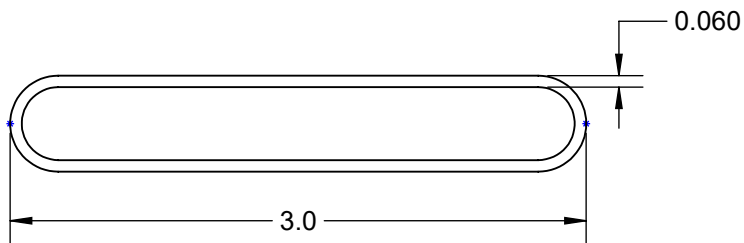
TOP



EDGE



SIDE



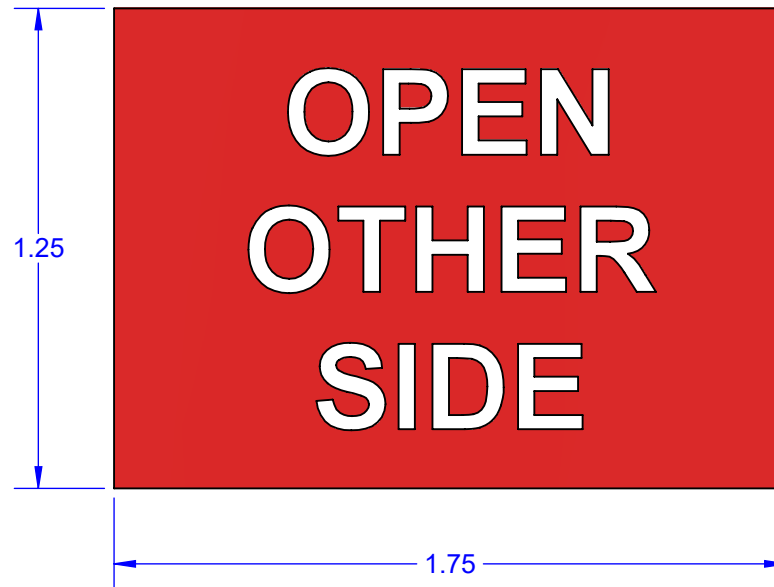
MODEL

Notes: (Unless Otherwise Specified).

1) SURFACE RESISTIVITY: $10^3 \Omega$ TO $10^6 \Omega$.

2) DIMENSIONS in INCHES (RESTING POSITION).

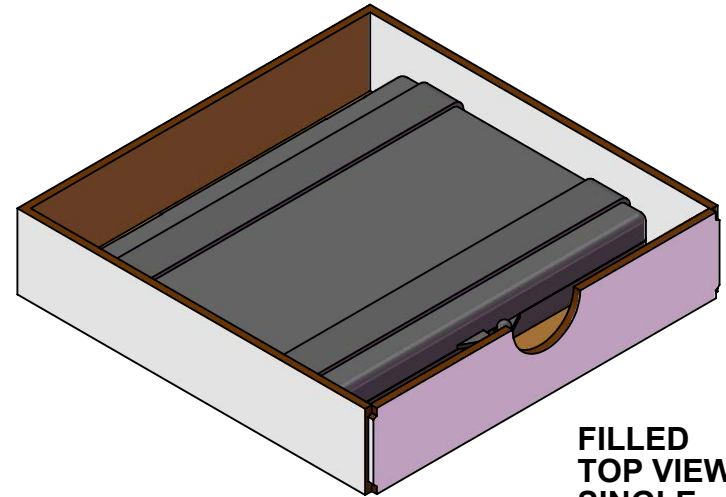
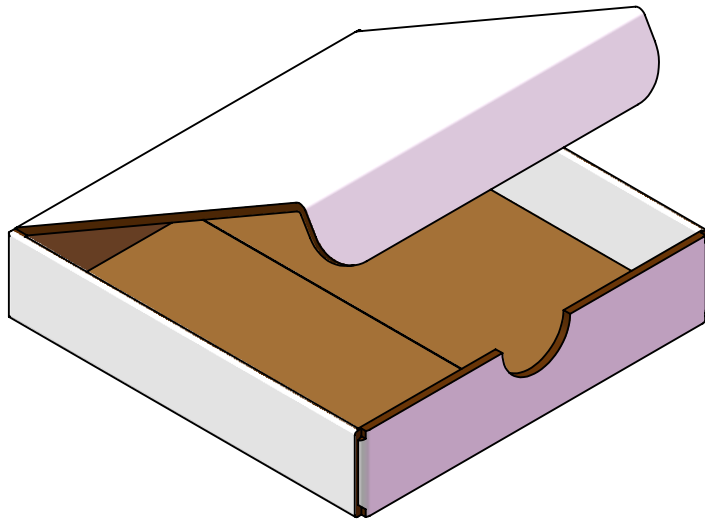
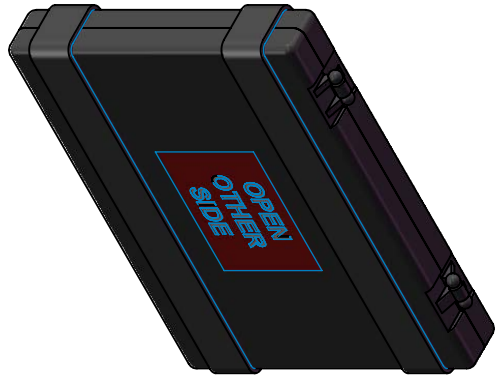
| TopLine® | | | |
|----------------------|------|---------------------------------------|---------------|
| TITLE | | RUBBER BAND-3.0-C BLACK CONDUCTIVE | |
| SCALE | SIZE | DRAWING NO. | REV |
| 1:1 | A | 090005 | A |
| DO NOT SCALE DRAWING | | | SHEET 9 OF 11 |



Notes: (Unless Otherwise Specified).

1. DIMENSIONS IN INCHES.
2. MATERIAL: PAPER LABEL WITH ADHESIVE.
3. COLOR: RED.
4. PURPOSE: IDENTIFY BOTTOM OF HINGE BOX.

| | | | |
|----------------------------|------|----------------------------------|----------------|
| TopLine[®] | | | |
| TITLE | | LABEL FOR BOTTOM OF HINGE BOX | |
| SCALE | SIZE | DRAWING NO. | REV |
| 2:1 | A | 090009 | A |
| DO NOT SCALE DRAWING | | | SHEET 10 OF 11 |



**FILLED
TOP VIEW
SINGLE**

NOTES: (Unless Otherwise Specified).

1. DIMENSIONS INCHES.
2. MEASUREMENT INCLUDES RUBBER BANDS.
3. BOX SIZE SUBJECT TO CHANGE.

TopLine®

TITLE CCGA TRAY BOX CARRIER
CARTON

| | | | |
|--------------|-----------|-----------------------|----------|
| SCALE 1:2 | SIZE A | DRAWING NO. 900001 | REV A |
|--------------|-----------|-----------------------|----------|

DO NOT SCALE DRAWING

SHEET 11 OF 11