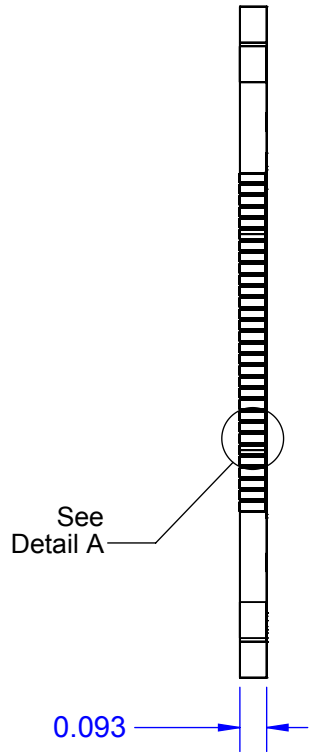
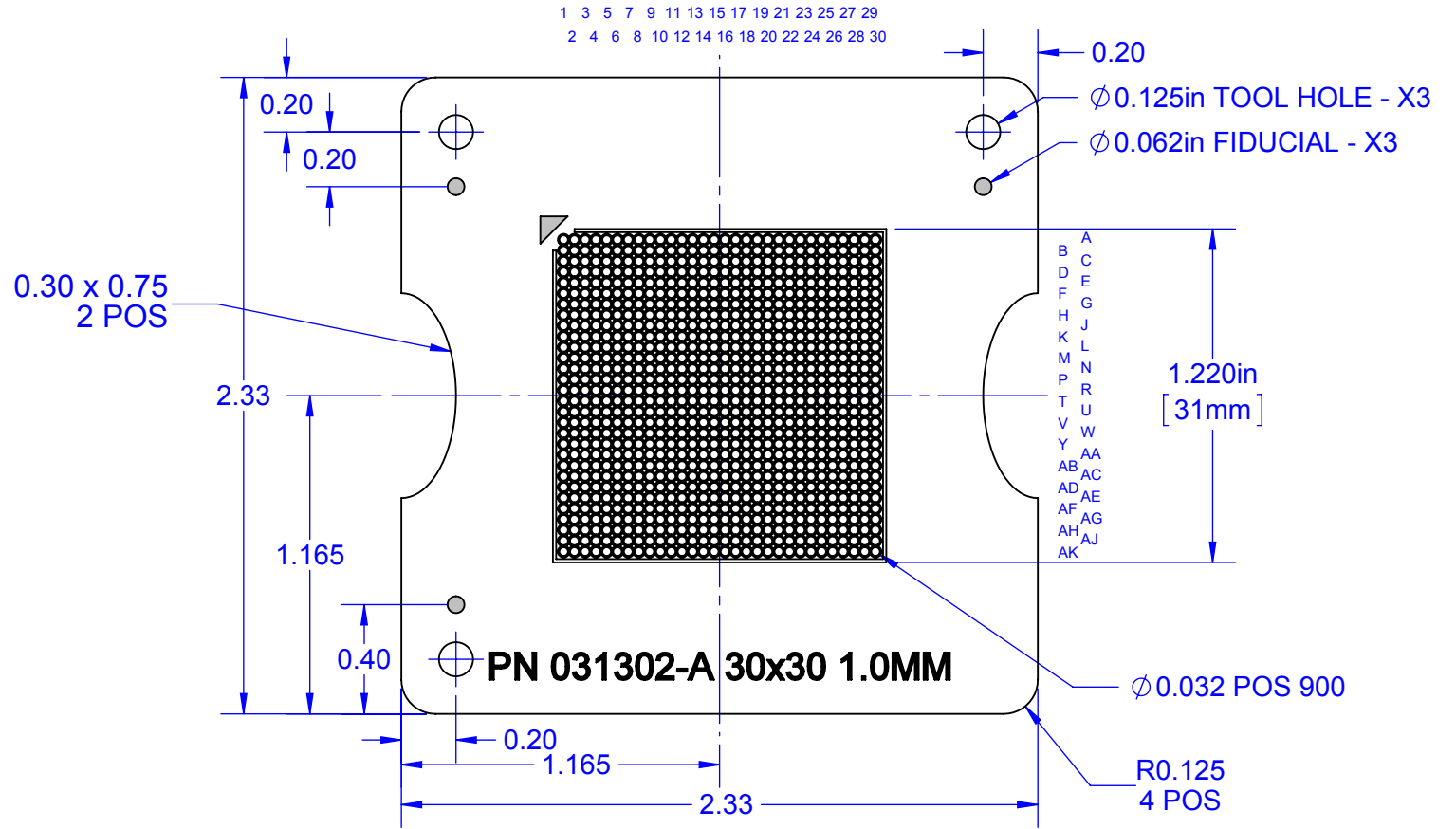


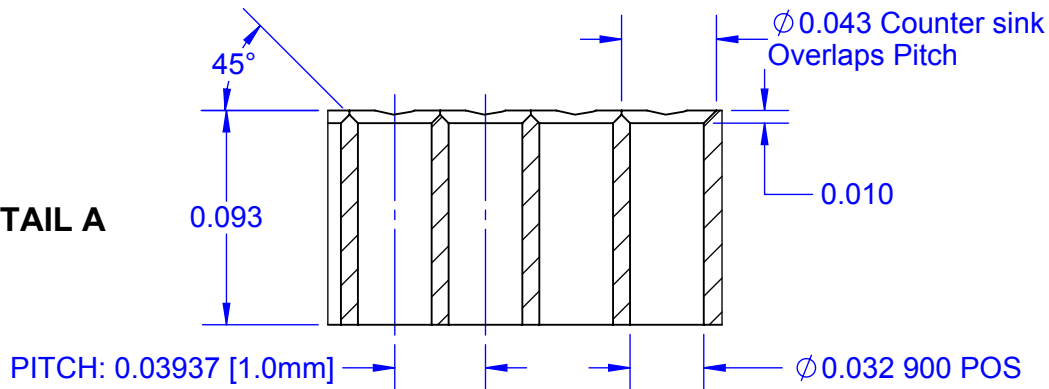
**SIDE VIEW**



**TOP VIEW**



**DETAIL A**

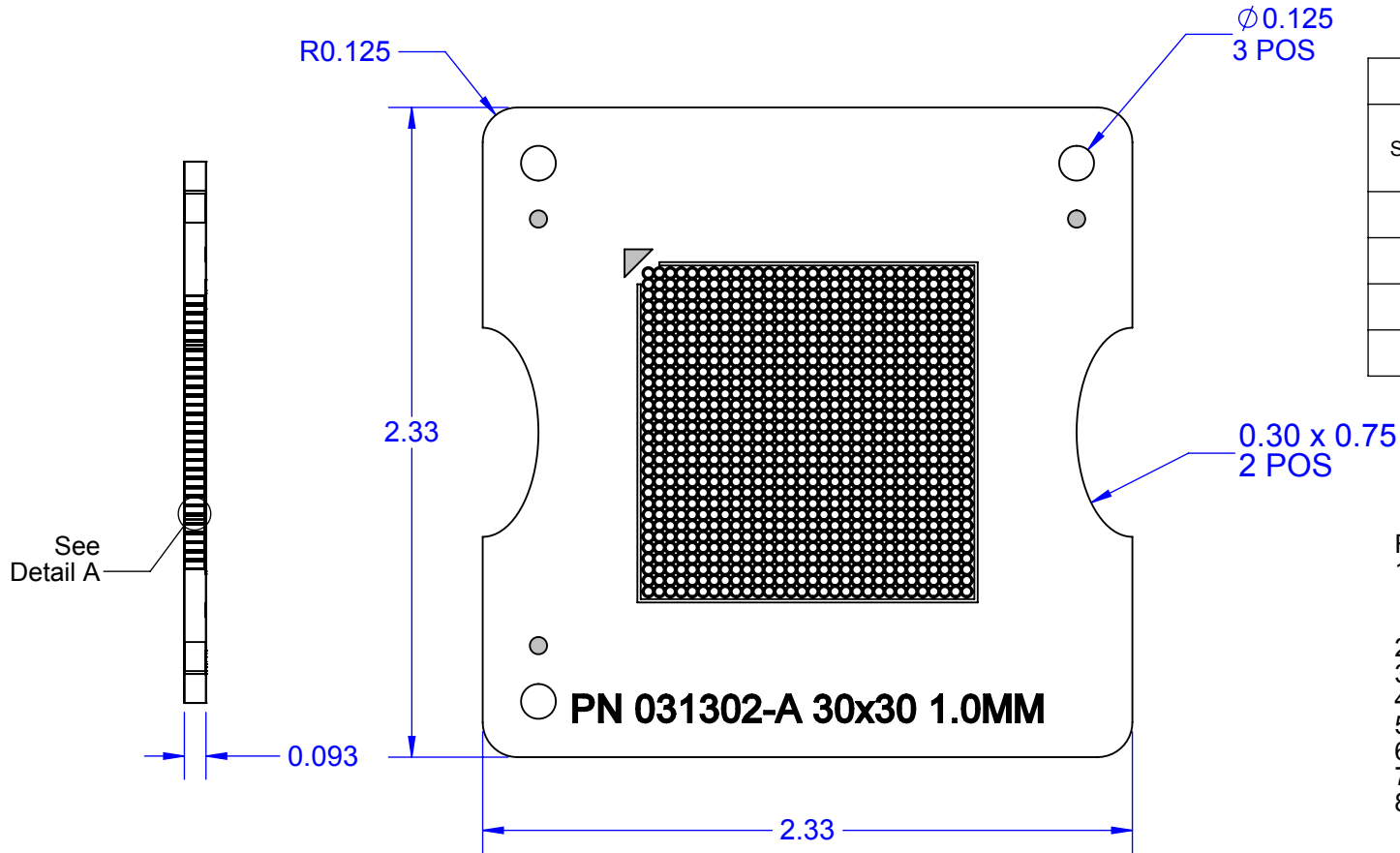


**NOTES:**

1. DIMENSIONS IN INCH UNLESS OTHERWISE STATED.
2. MATERIAL: FR4 COLOR BLACK.
3. LEGEND: WHITE INK.
4. PIN REFERENCE DESIGNATORS NOT MARKED ON PCB

APPROVALS	DATE	<b>TopLine®</b>			
DRAWN T. Au	07/21/15				
ENG M. Hart	07/21/15	TITLE CCGA896 TRAY INSERT 2.33" SQ			
MFG		SCALE 3:2	SIZE A	DRAWING NO. 031302	REV A
QA					
CUST		DO NOT SCALE DRAWING		SHEET 1 OF 3	
REVISED					

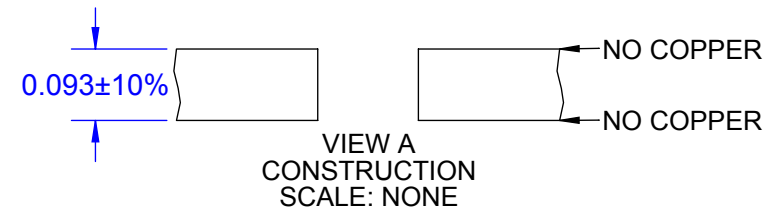
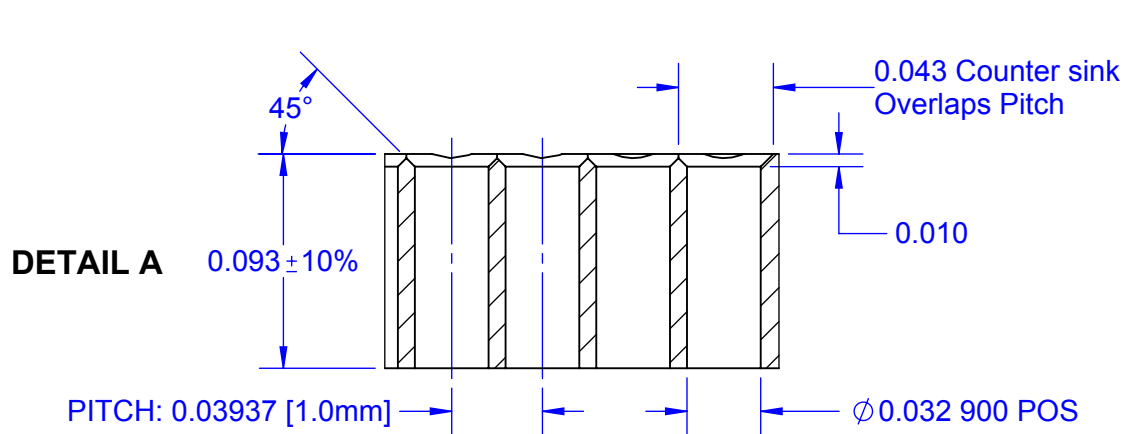
# FAB DRILL AND PLATED THROUGH HOLES



HOLE CHART			
SYMBOL	DIAMETER UNPLATED THRU	COUNTER SINK	QTY PCB
+	$0.032 \pm 0.003$	-	900
○	-	$0.043 \pm 0.003$	900
○	$\phi 0.125$		3
TOTAL			1803

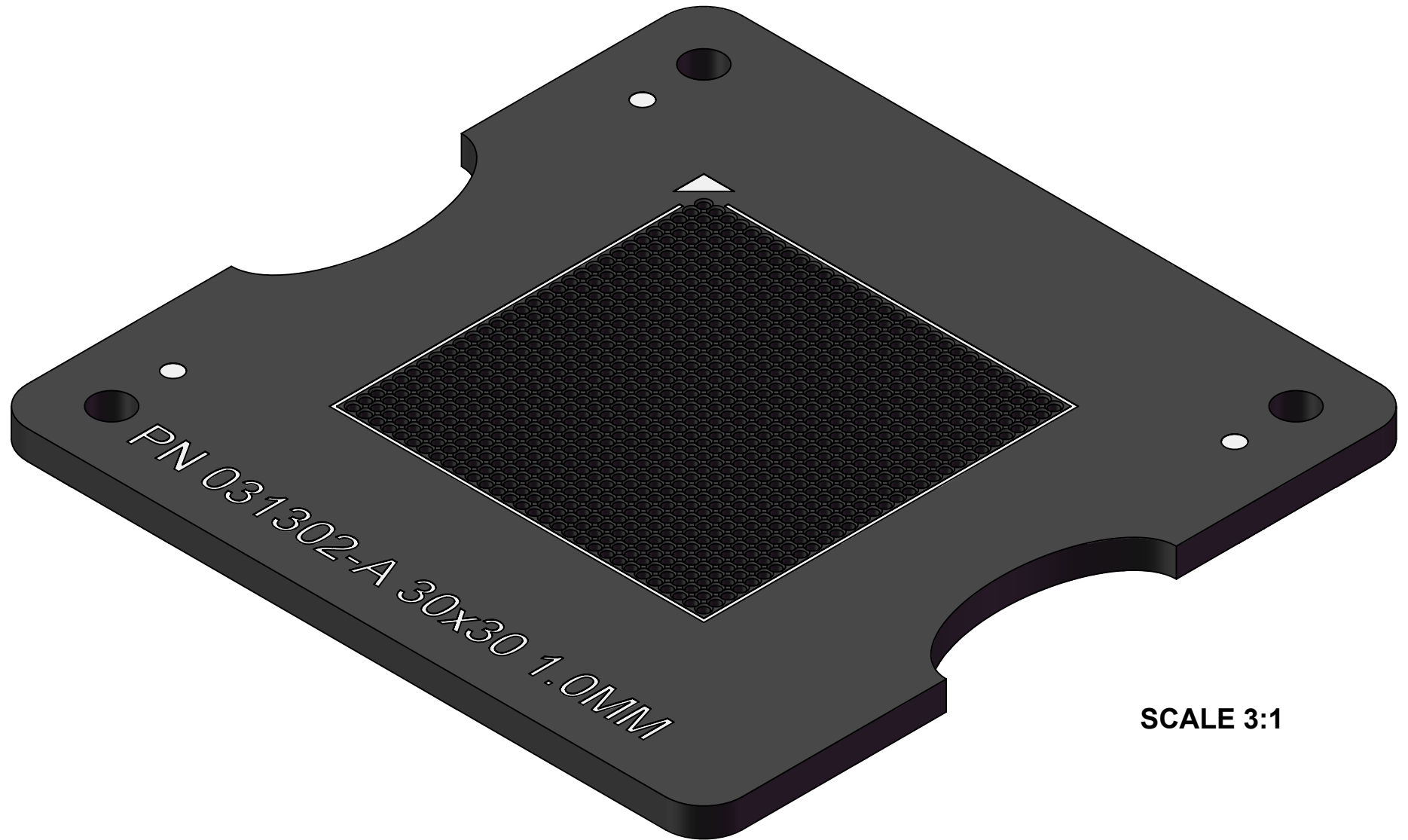
## FAB NOTES:

- MATERIAL:  
 A. NO COPPER (0/0).  
 B. G10 BLACK COLOR.
- REFER TO DETAIL A COUNTER SINK.
- REFER TO VIEW A FOR STACK UP.
- NO PTH HOLES.
- NO SOLDER MASK.
- NO PCB MFGR LOGO ALLOWED.
- SILKSCREEN WHITE INK.
- FULLY ROUTE EACH BOARD.



<b>TopLine®</b>			
TITLE CCGA896 TRAY INSERT 2.33" SQ			
SCALE 1.25:1	SIZE A	DRAWING NO. 031302	REV A
DO NOT SCALE DRAWING		SHEET 2 OF 3	

MODEL



SCALE 3:1

<b>TopLine<sup>®</sup></b>			
TITLE		CCGA896 TRAY INSERT 2.33" SQ	
SCALE	SIZE	DRAWING NO.	REV
3:1	A	031302	A
DO NOT SCALE DRAWING			SHEET 3 OF 3