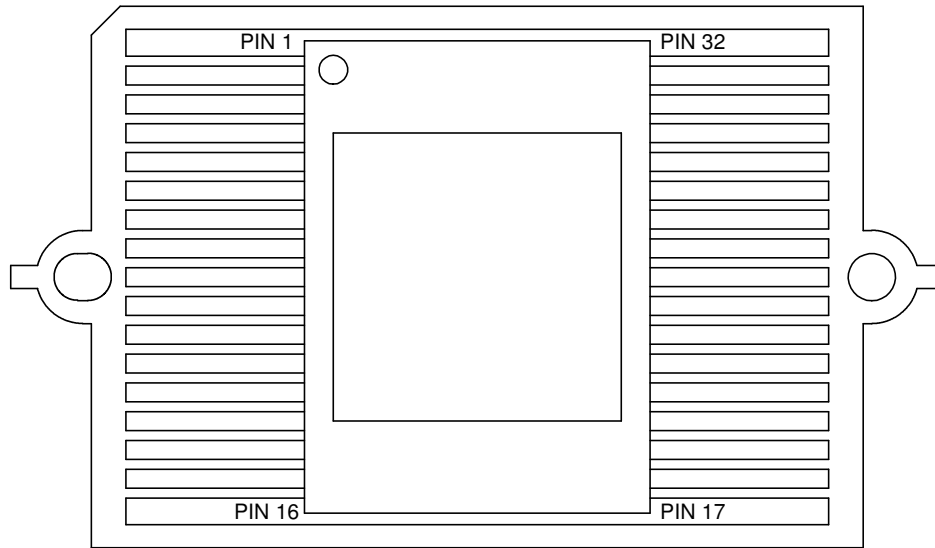


Notes: (Unless Otherwise Specified).

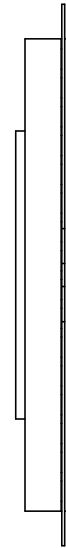
- 1) DIMENSIONS: INCH [mm].
- 2) FLAT LEADS ON TIE BAR ALLOY 42.
- 3) ALL EXPOSED METAL GOLD PLATED (Au).
- 4) PINS = 32, PITCH 0.050" [1.27mm].

TOLERANCE UNLESS NOTED		APPROVALS	DATE	TopLine [®]			
X.XX	+/- 0.01	DRAWN J. HINES	5/8/2011				
X.XXX	+/- 0.005			FP32F50R.60X.82B-A DUMMY			
X.XXXX	+/- 0.0005			SCALE 3.5:1			
ANGLES +/- 0.5°		ENG		SIZE	DRAWING NO.		REV
ALL DIMENSIONS IN		MFG		A	123268		A
<input checked="" type="checkbox"/> INCHES <input type="checkbox"/> MILLIMETERS		QA		DO NOT SCALE DRAWING			
THIRD ANGLE PROJECTION		CUST		SHEET 1 OF 4			
		REVISED					

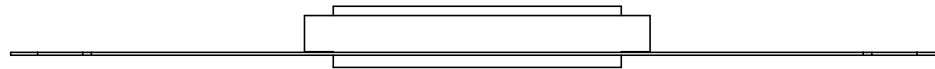
TOP



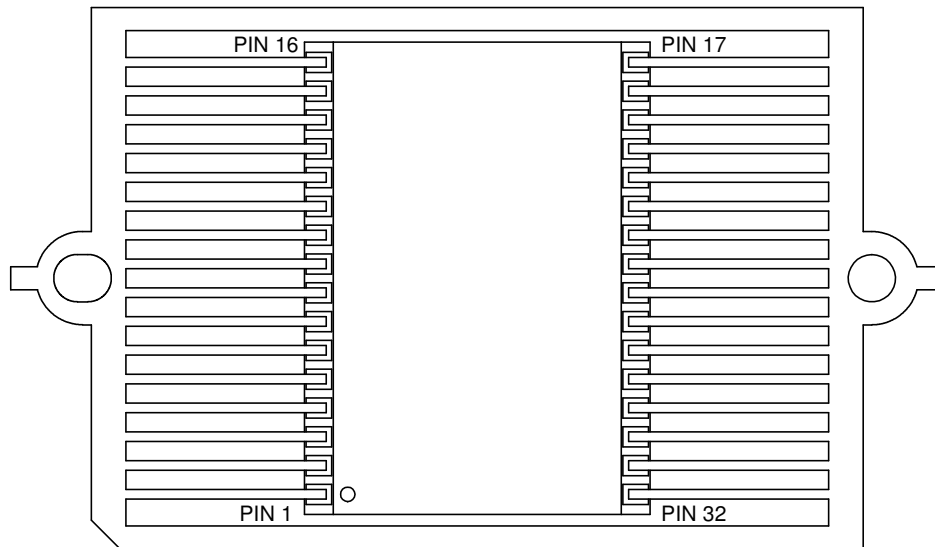
SIDE



SIDE



BOTTOM



TopLine®

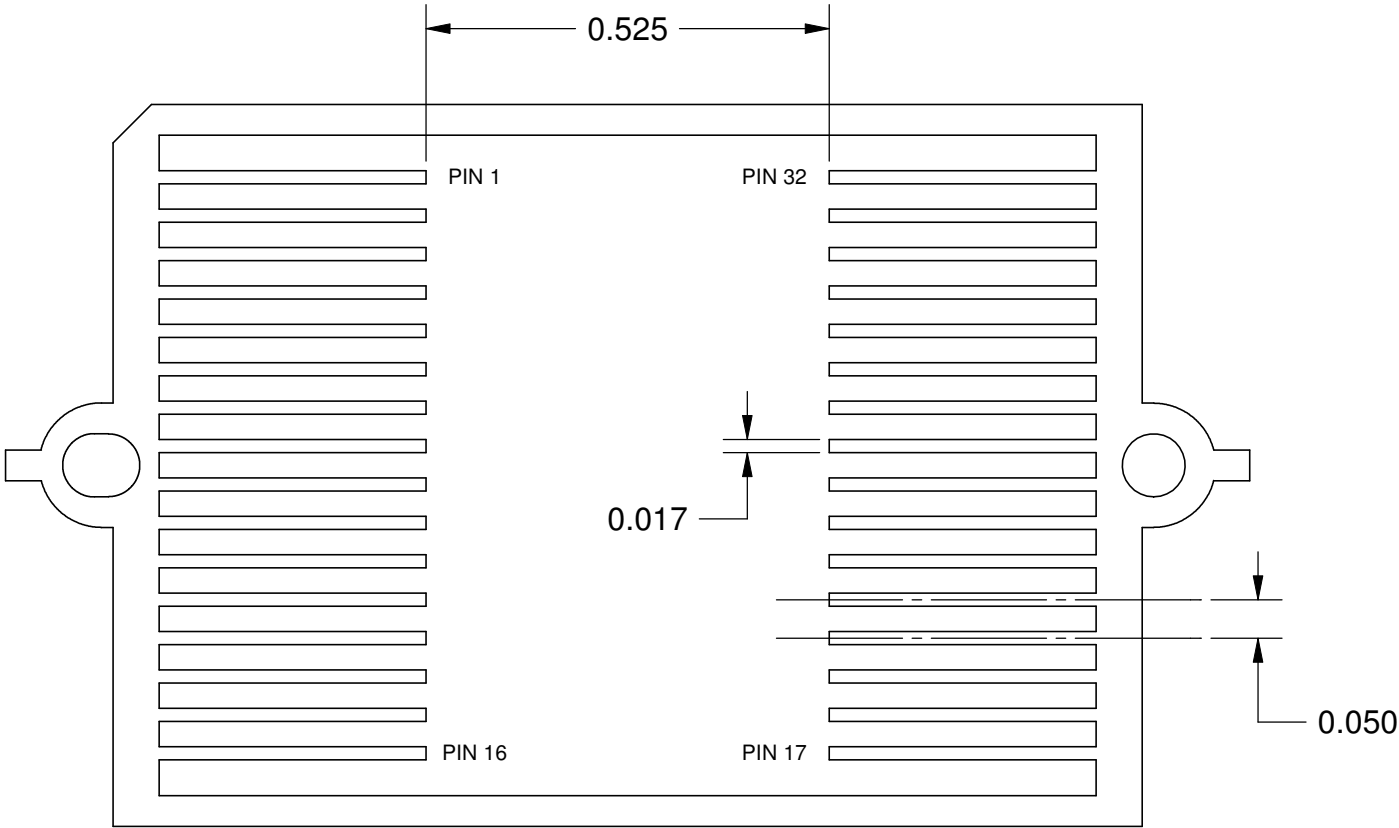
TITLE 32 PIN 0.050 INCH PITCH
FP32F50R.60X.82B-A DUMMY

SCALE	SIZE	DRAWING NO.	REV
3:1	A	123268	A

DO NOT SCALE DRAWING

SHEET 2 OF 4

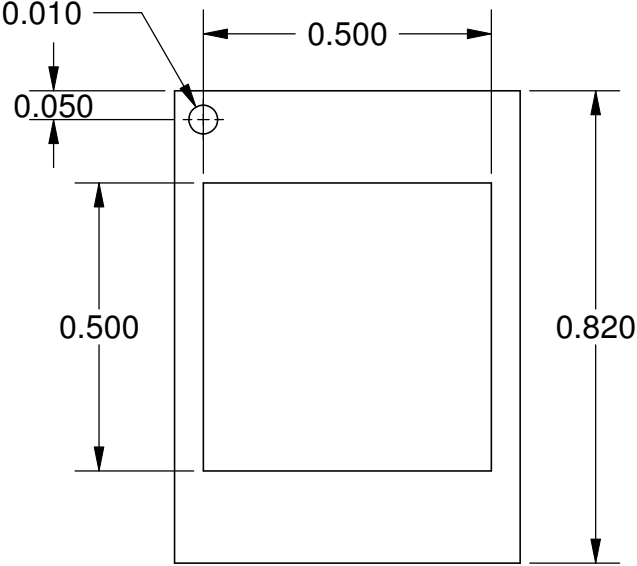
LEAD FRAME
(SHOWN WITHOUT BODY)
TOP VIEW



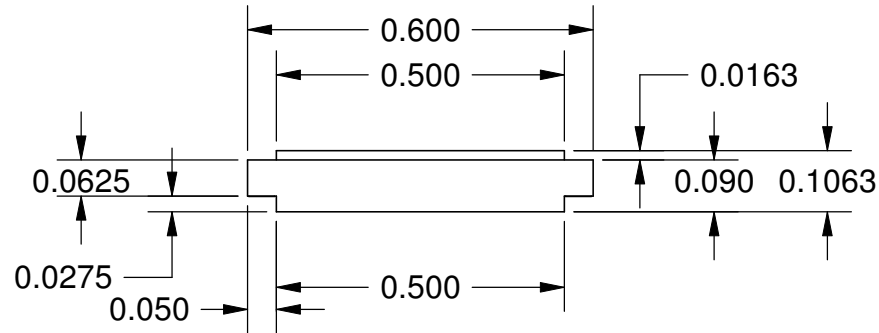
TopLine ®			
TITLE 32 PIN 0.050 INCH PITCH FP32F50R.60X.82B-A DUMMY			
SCALE 4:1	SIZE A	DRAWING NO. 123268	REV A
DO NOT SCALE DRAWING		SHEET 3 OF 4	

PIN 1 MARK $\phi 0.050 \nabla 0.010$

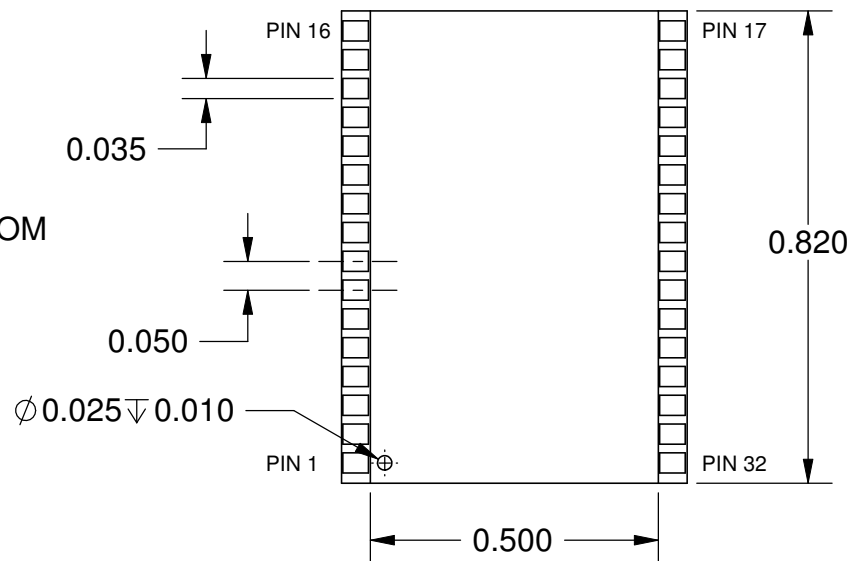
TOP



SIDE



BOTTOM



TopLine[®]

TITLE 32 PIN 0.050 INCH PITCH
FP32F50R.60X.82B-A DUMMY

SCALE	SIZE	DRAWING NO.	REV
3:1	A	123268	A

DO NOT SCALE DRAWING

SHEET 4 OF 4