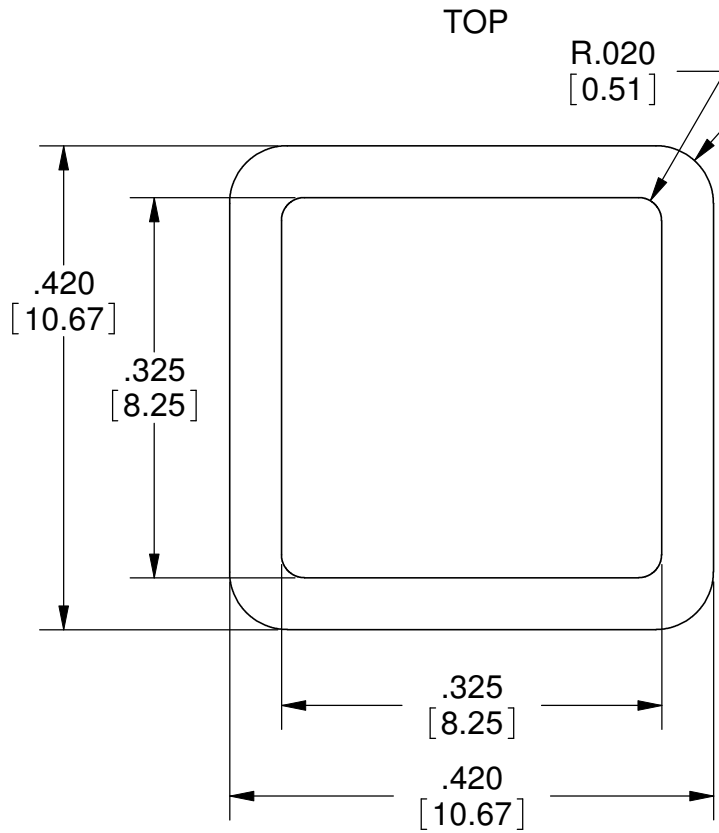
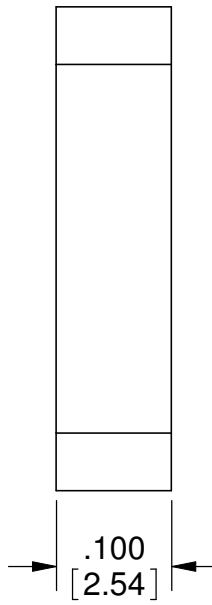


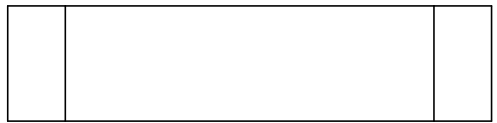
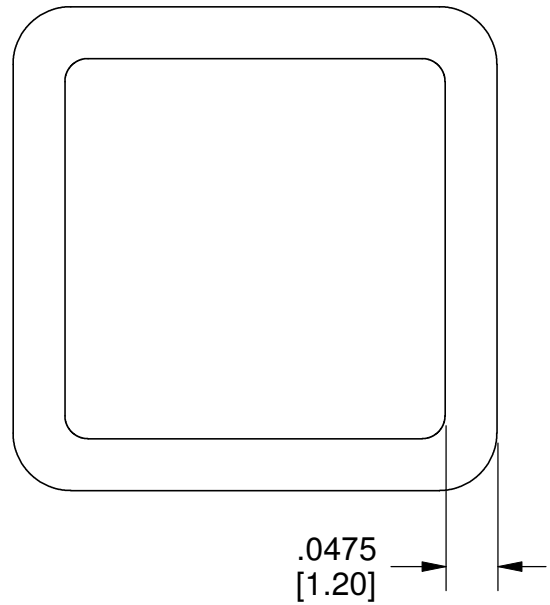
REVISIONS				
DATE	REV.	ECO	DESCRIPTION	APPROVED



SIDE



BOTTOM




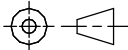
EDGE VIEW

TOPLINE P/N	PACKAGING
SSQ424210E13A-G	TAPE AND REEL
SSQ424210T-G	TRAY

OPTIONS:
 OTHER SIZES AVAILABLE.
 OTHER PLATING FINISHED AVAILABLE
 OTHER THICKNESS AVAILABLE.

Notes: (Unless Otherwise Specified).

- 1) BODY: Cu COPPER C101.
- 2) DESCRIPTION: COPPER FRAME.
- 3) PLATING: GOLD 3-5 MICRO-INCHES (0.076-0.127 μm), OVER NICKEL 150-300 MICRO-INCHES (3.8-7.6 μm).
- 4) DEVICE IS NON-POLARIZED.
- 5) COMPONENT MARKING: NONE.
- 6) DIMENSIONS: INCH [mm].

TOLERANCE UNLESS NOTED		APPROVALS		DATE					
X.XX	+/- 0.01	DRAWN	J. Hines	5/29/2010					TITLE PLATED COPPER RING SSQ424210
X.XXX	+/- 0.005			ENG					
X.XXXX	+/- 0.0005			MFG					
ANGLES +/- 0.5° ALL DIMENSIONS IN <input checked="" type="checkbox"/> INCHES <input type="checkbox"/> MILLIMETERS		QA			SCALE	SIZE	DRAWING NO.	REV	
THIRD ANGLE PROJECTION 		CUST			6:1	A	120013	A	
		REVISED			DO NOT SCALE DRAWING			SHEET 1 OF 1	