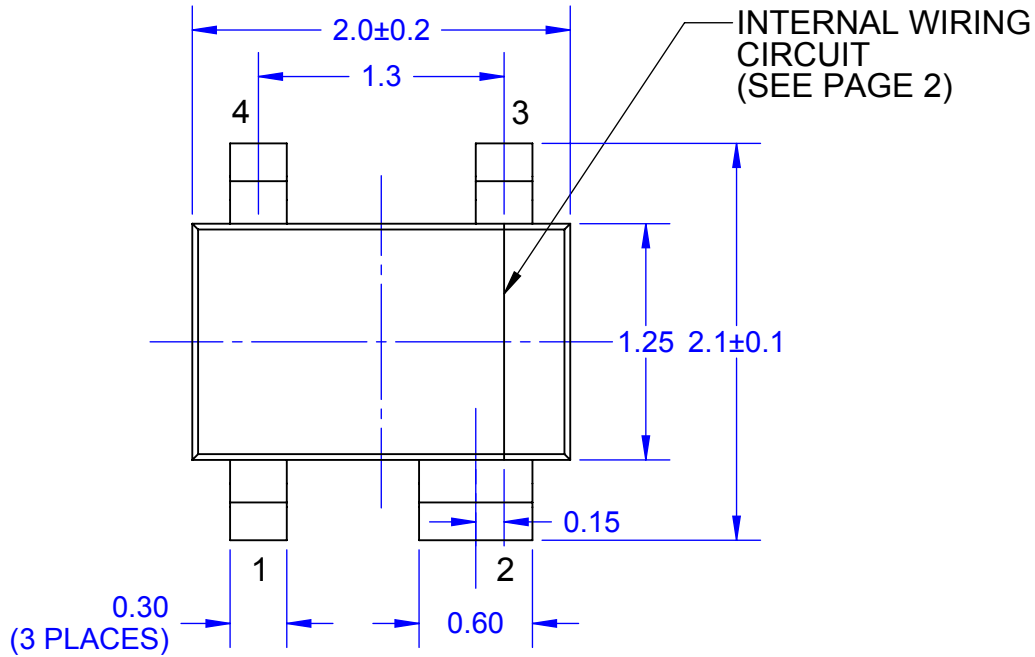
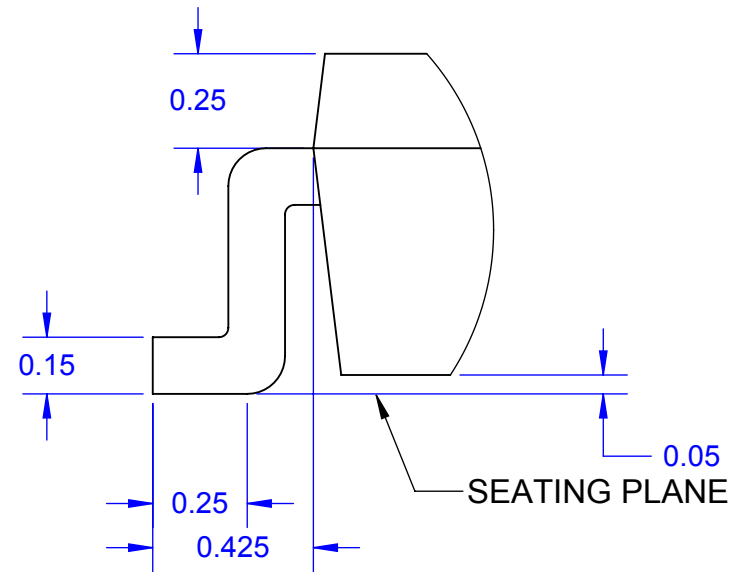


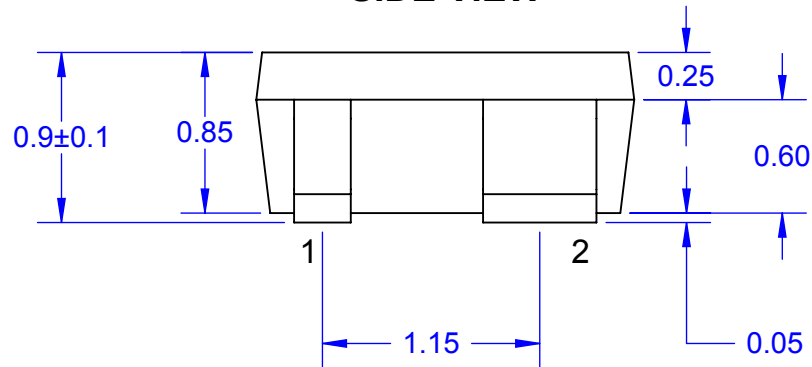
TOP VIEW



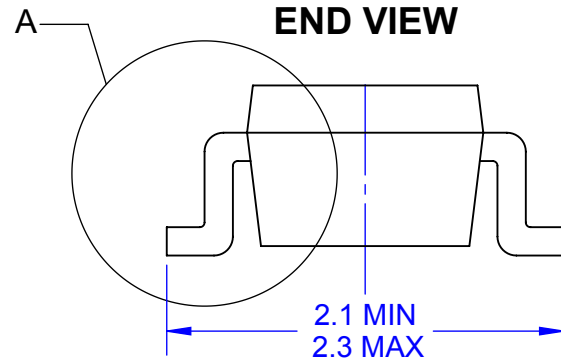
**DETAIL A
SCALE 50 : 1**



SIDE VIEW



END VIEW

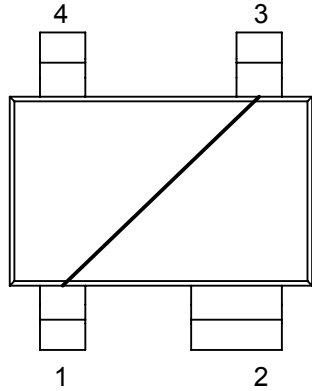


Notes: (Unless Otherwise Specified).

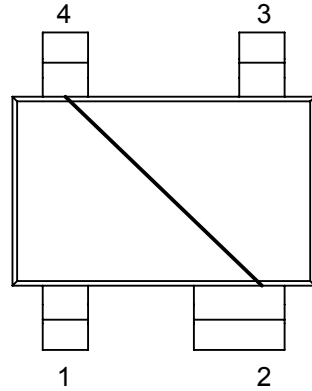
- 1) DIMENSIONS IN mm.
- 2) SEE DAISY CHAIN JUMPER DIAGRAMS (PAGE 2).
- 3) SEE PART NUMBER CONFIGURATION (PAGE 4).
- 4) RECOMMENDED PC BOARD LAYOUT PATTERN (PAGE 7).

APPROVALS	DATE	TopLine®			
DRAWN T.Au	10/04/13				
ENG M. Hart	10/04/13	TITLE		SOT343 JUMPER DAISY CHAIN	
MFG		SCALE	SIZE	DRAWING NO.	REV
QA		20:1	A	120343	A
CUST		DO NOT SCALE DRAWING			SHEET 1 OF 8
REVISED					

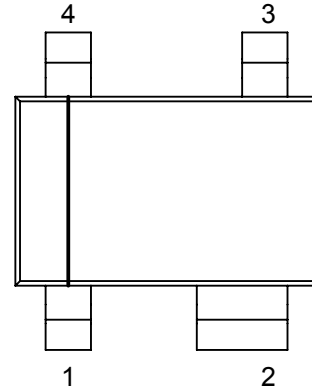
**INTERNAL WIRING CIRCUIT (JUMPER)
DAISY CHAIN PART NUMBER SUFFIX
TOP VIEW**



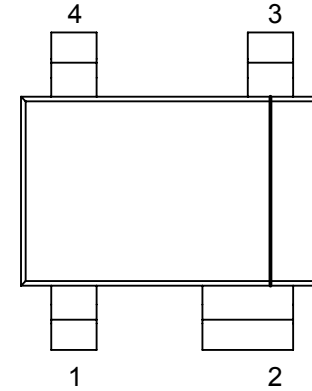
DC13



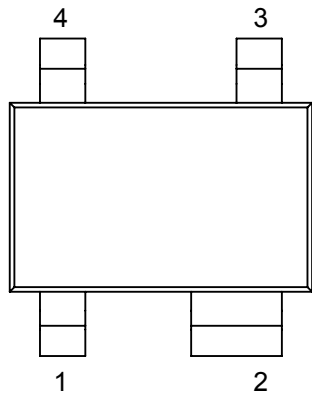
DC42



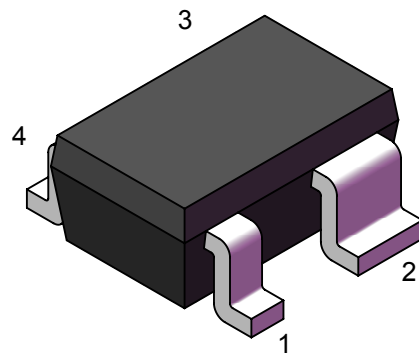
DC14



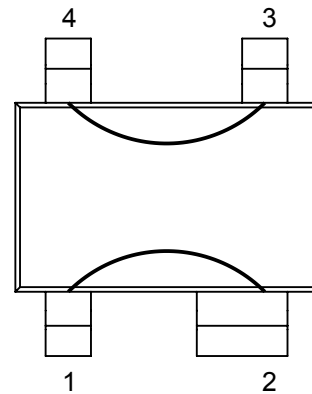
DC22



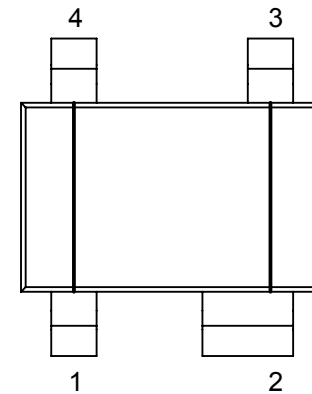
-ISO
NO WIRES
FULLY ISOLATED



MODEL SCALE 20:1



DC1234



DC1423

TopLine®

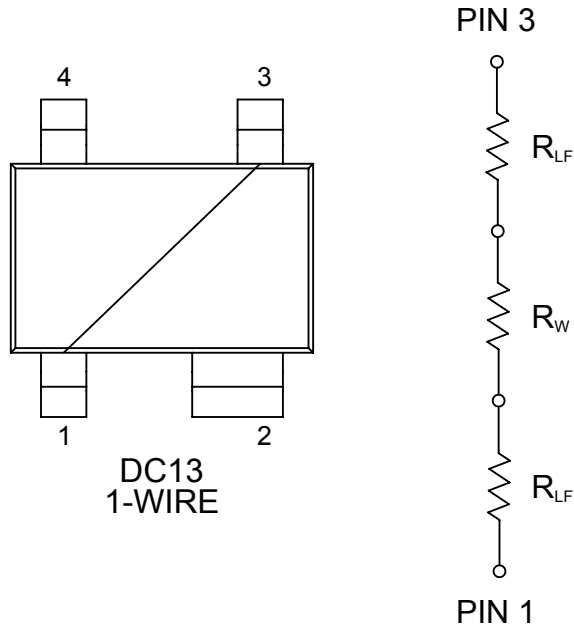
TITLE SOT343 JUMPER
DAISY CHAIN

SCALE 20:1	SIZE A	DRAWING NO. 120343	REV A
---------------	-----------	-----------------------	----------

DO NOT SCALE DRAWING

SHEET 2 OF 8

SCHEMATIC EQUIVALENT INTERNAL CIRCUIT

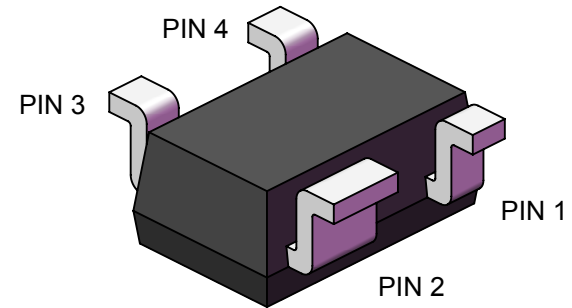
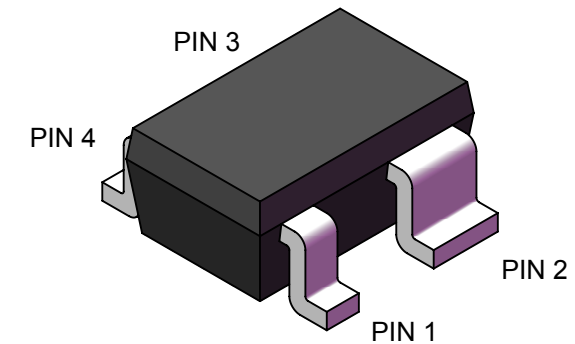


DC13
1-WIRE

R_W = GOLD WIRE-BOND
 R_{LF} = LEAD FRAME

ELECTRICAL RESISTANCE MILLIOHM (DC) MAX

CIRCUIT	PIN 1~2	PIN 1~3	PIN 1~4	PIN 2~3	PIN 2~4	PIN 3~4
DC13	-	50 mΩ	-	-	-	-
DC14	-	-	50 mΩ	-	-	-
DC22	-	-	-	50 mΩ	-	-
DC42	-	-	-	-	50 mΩ	-
DC1234	50 mΩ	-	-	-	-	50 mΩ
DC1423	-	-	50 mΩ	50 mΩ	-	-



TEMPERATURE RATING

JUNCTION TEMP T_j	150 °C
STORAGE TEMP T_{stg}	-65 °C TO 150 °C
OPERATING TEMP	-65 °C TO 150 °C
PEAK REFLOW TEMP T_{reflow} 10 SECONDS	260 °C

MAXIMUM ELECTRICAL (DC) RATING

WORKING VOLTAGE	100 V
CURRENT RATING	150 mA
POWER @ 25 °C	200 mW

THERMAL RESISTANCE

JUNCTION TO AMBIENT ($T_a=25^\circ$) $R_{th(j-a)}$	350K/W
---	--------

TopLine[®]

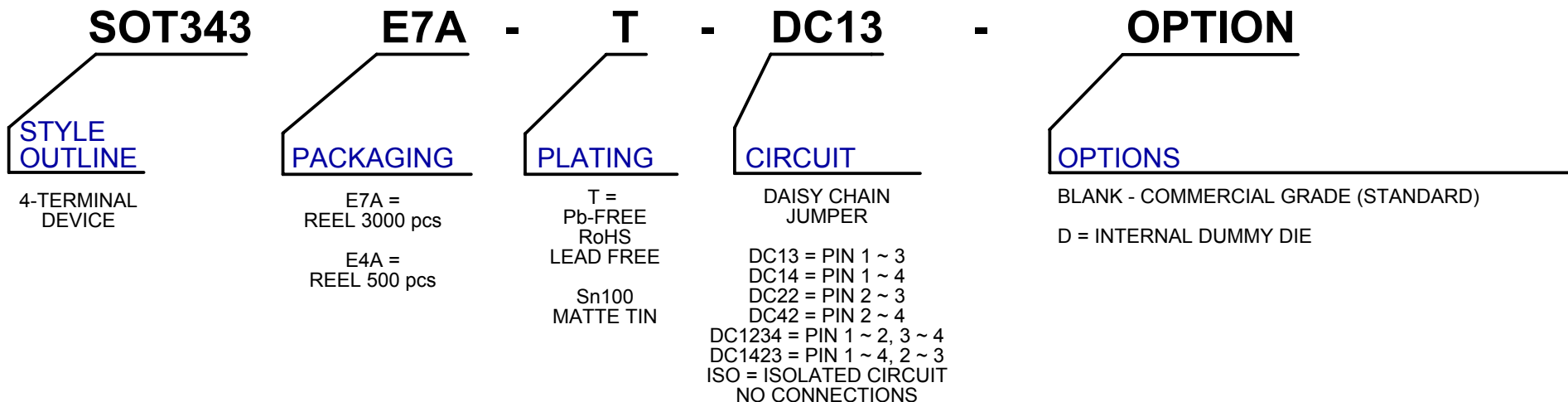
TITLE SOT343 JUMPER
DAISY CHAIN

SCALE 20:1	SIZE A	DRAWING NO. 120343	REV A
---------------	-----------	-----------------------	----------

DO NOT SCALE DRAWING

SHEET 3 OF 8

PART NUMBERING SYSTEM

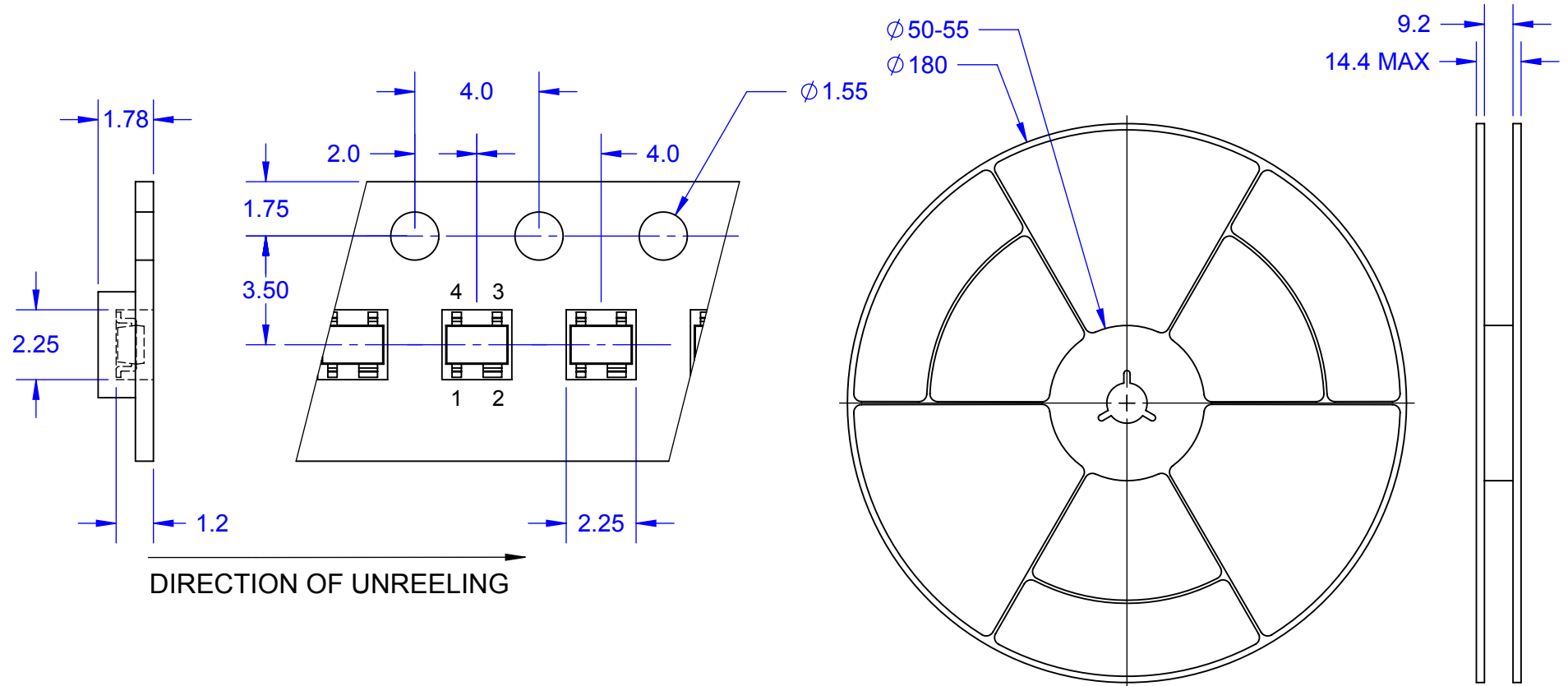


PART NUMBER	SHORTED PINS	NOTES	RoHS Pb-FREE	MSL LEVEL	HALOGEN FREE	GRADE	TOP MARK
SOT343E7A-TIN	N/A	DUMMY	YES	3	NO	COMMERCIAL	N/A
SOT343E7A-T-ISO	NONE	FULLY ISOLATED	YES	3	YES	COMMERCIAL	ISO
SOT343E7A-T-DC13D	1 ~ 3	1-WIRE	YES	3	YES	COMMERCIAL	UNMARKED
SOT343E7A-T-DC14D	1 ~ 4	1-WIRE	YES	3	YES	COMMERCIAL	14D
SOT343E7A-T-DC22D	2 ~ 3	1-WIRE	YES	3	YES	COMMERCIAL	22D
SOT343E7A-T-DC42D	4 ~ 2	1-WIRE	YES	3	YES	COMMERCIAL	UNMARKED
SOT343E7A-T-DC1234D	1 ~ 2, 3 ~ 4	2-WIRE	YES	3	YES	COMMERCIAL	UNMARKED
SOT343E7A-T-DC1423D	1 ~ 4, 2 ~ 3	2-WIRE	YES	3	YES	COMMERCIAL	UNMARKED

TopLine®			
TITLE SOT343 JUMPER DAISY CHAIN			
SCALE	SIZE A	DRAWING NO. 120343	REV A
DO NOT SCALE DRAWING			SHEET 4 OF 8

TAPE SPECIFICATION FOR SOT-343 SURFACE MOUNT DEVICE

SOT-343 PACKAGE REEL



8mm TAPE
 SIZE OF REEL
 STANDARD 180mm (7") 3,000 PCS
 MINI-REEL 100mm (4") 500 PCS

Notes: (Unless Otherwise Specified).
 1) DIMENSIONS IN mm.

TopLine®			
TITLE		SOT343 JUMPER DAISY CHAIN	
SCALE	SIZE	DRAWING NO.	REV
5:1	A	120343	A
DO NOT SCALE DRAWING			SHEET 5 OF 8

MATERIALS CONTENT DECLARATION FORM
SOT343 PACKAGE MASS 5.47mg

COMPONENT	MATERIAL	MATERIAL		SUBSTANCE	CAS No.	SUBSTANCE	
		(%wt)	(mg)			(%wt)	(mg)
ACTIVE DEVICE	DOPED Si	4.2%	0.23	Si	7440-21-3	4.2%	0.23
BOND WIRE	GOLD	0.37%	0.02	Au	7440-57-5	0.37%	0.02
				Cu	7440-50-8		
LEADFRAME	ALLOY 42 w/ SILVER PLATING	23.77%	1.3	Fe	7439-89-6	13.71%	0.75
				Ni	7440-02-0	9.51%	0.52
				Ag	7440-22-4	0.55%	0.03
ENCAPSULATION	EMC GREEN HALOGEN FREE	67.46%	3.69	SILICA (FUSED)	60676-86-0	51.94%	2.841
				EPOXY RESIN	29690-82-2	6.75%	0.369
				PHENOL RESIN	9003-35-4	6.54%	0.358
				CARBON BLACK	1333-86-4	0.2%	0.011
				METAL HYDROXIDE	1309-42-8	2.02%	0.111
PLATING	MATTE TIN	4.2%	0.23	Sn	7440-31-5	4.2%	0.23

TopLine®

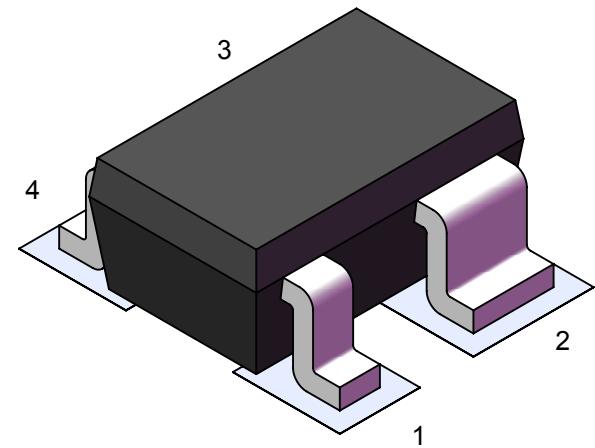
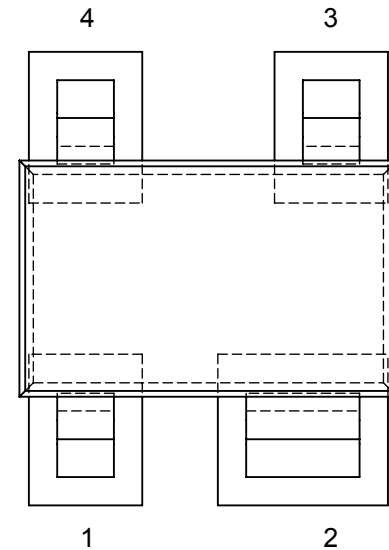
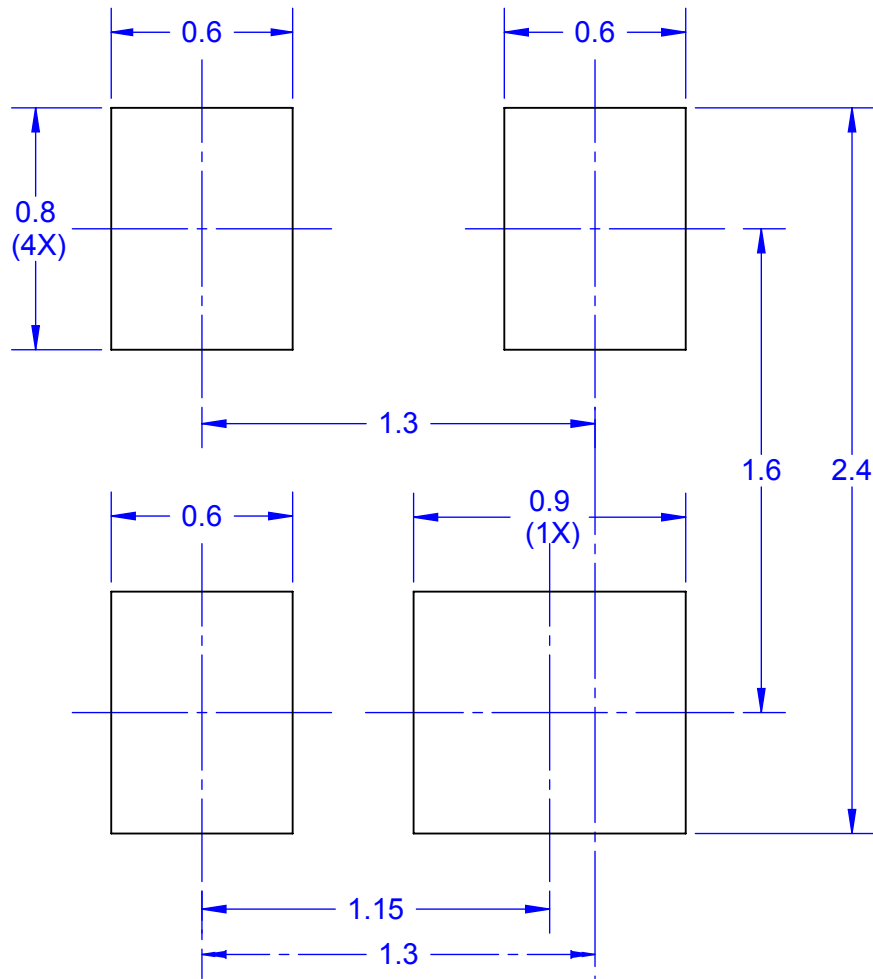
TITLE SOT343 JUMPER
DAISY CHAIN

SCALE	SIZE A	DRAWING NO. 120343	REV A
-------	-----------	-----------------------	----------

DO NOT SCALE DRAWING

SHEET 6 OF 8

PC BOARD LAND PATTERN



Notes: (Unless Otherwise Specified).

1) DIMENSIONS IN mm.

2) PCB BOARD DIMENSIONS ARE PRESENTED ONLY AS A GUIDELINE
DESIGNER SHOULD USE THEIR OWN EXPERIENCE WHEN DESIGNING PCB.

TopLine[®]

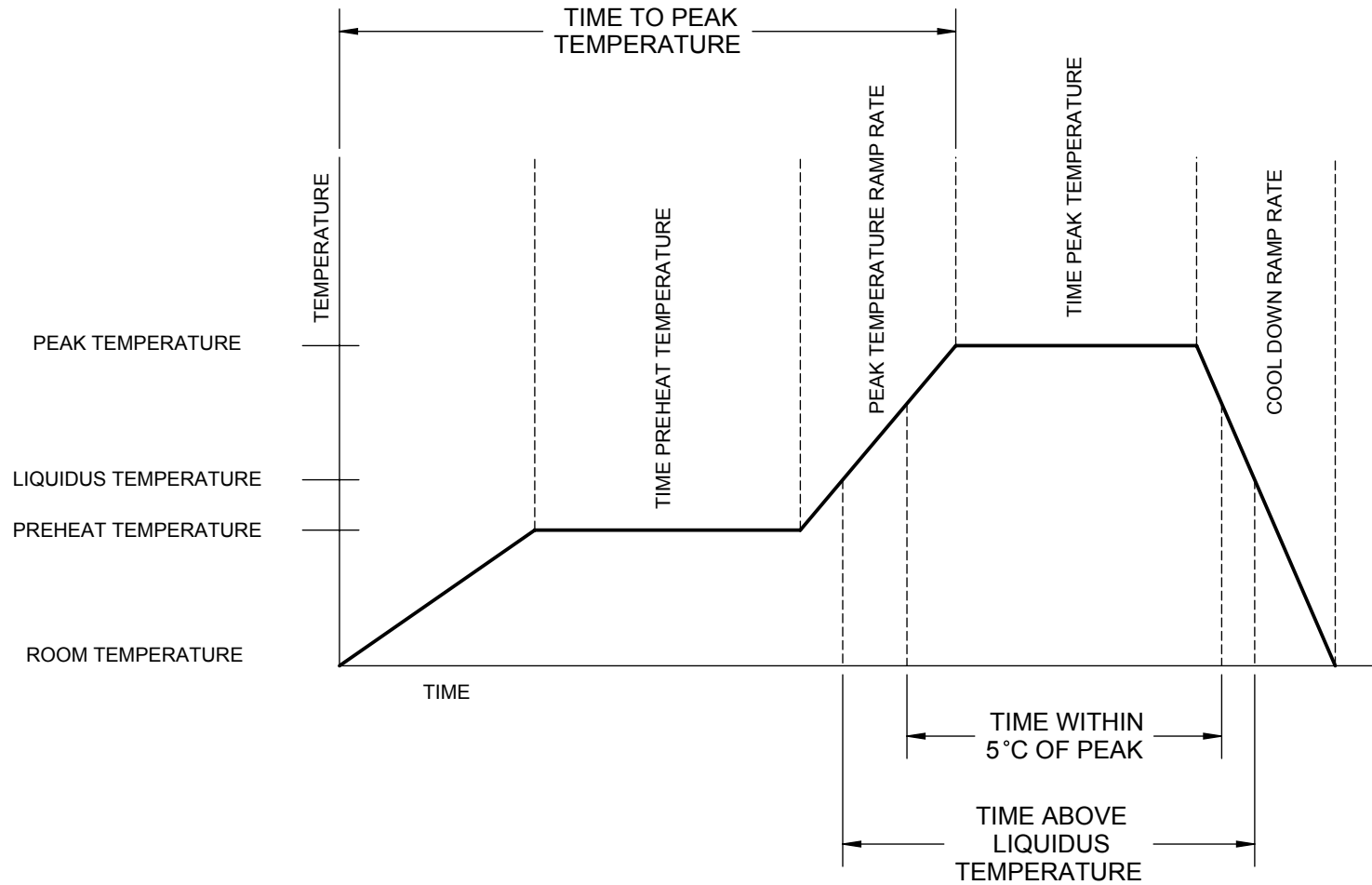
TITLE SOT343 JUMPER
DAISY CHAIN

SCALE 40:1	SIZE A	DRAWING NO. 120343	REV A
---------------	-----------	-----------------------	----------

DO NOT SCALE DRAWING

SHEET 7 OF 8

LEAD FREE REFLOW PROFILE



DESCRIPTION	REQUIREMENT
AVERAGE PREHEAT RAMP RATE	3°C /SECOND MAXIMUM
PREHEAT TEMPERATURE	150°C MINIMUM, 200°C MAXIMUM
PREHEAT TIME	60 TO 80 SECONDS
RAMP TO PEAK	3°C /SECOND MAXIMUM
TIME OVER LIQUIDUS (217°C)	60 TO 150 SECONDS
PEAK TEMPERATURE	260°C +0/-5°C
TIME WITHIN 5°C OF PEAK	20 TO 40 SECONDS
RAMP - COOL DOWN	6°C /SECONDS MAXIMUM
TIME 25°C TO PEAK	8 MINUTES MAXIMUM

TopLine®			
TITLE		SOT343 JUMPER DAISY CHAIN	
SCALE	SIZE	DRAWING NO.	REV
	A	120343	A
DO NOT SCALE DRAWING			SHEET 8 OF 8