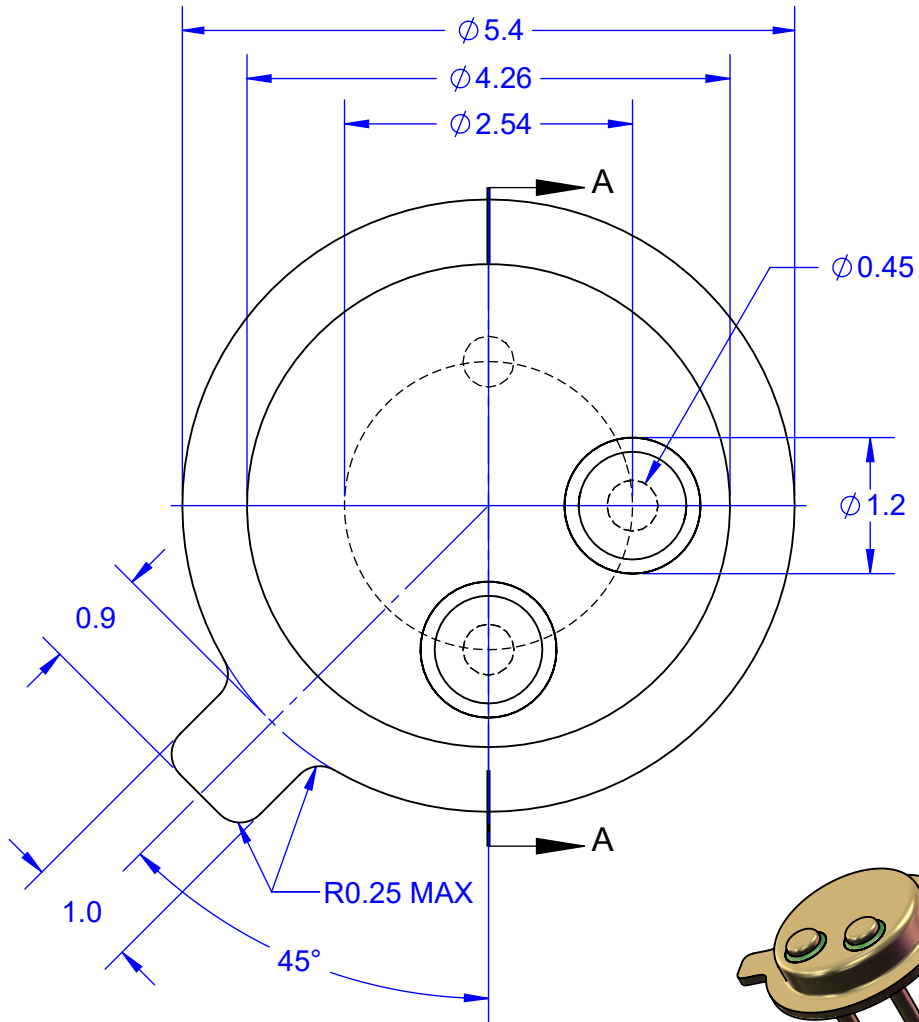
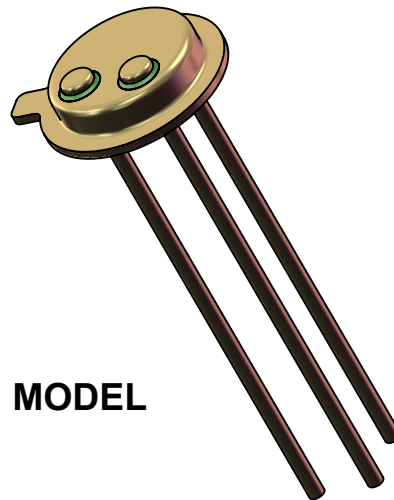
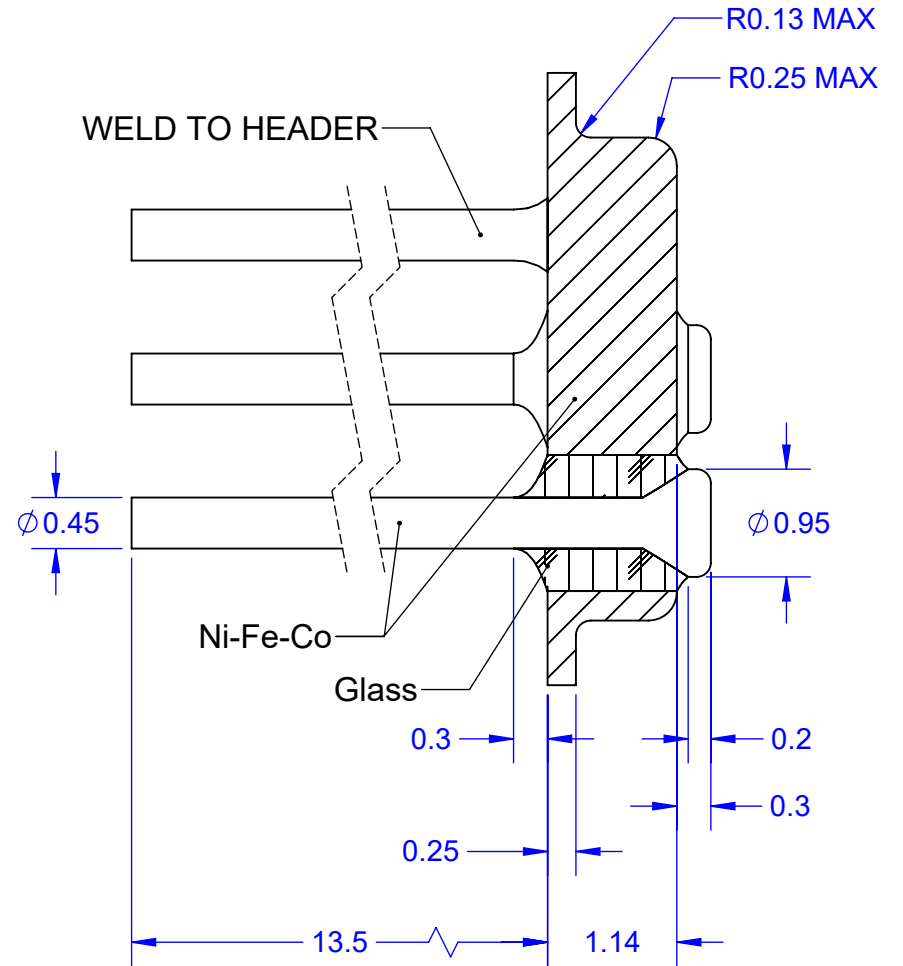


### TOP VIEW



### SECTION VIEW A-A



**MODEL**

- NOTES:**
1. DIMMENSIONS in MM (Unless Otherwise Specified).
  2. BODY KOVAR ASTM F45 ALLOY 42.
  3. LEADS KOVAR ASTM F15.
  4. GLASS 7052 OR EQUIVALENT.
  5. PLATING: Ni 100~300 Micro-inch  
Au 50 Micro-inch MIN

APPROVALS	DATE	<b>TopLine®</b>			
DRAWN T. Au	10/23/15				
ENG M. Hart	10/23/15	TITLE TO-46 HEADER 3L			
MFG		SCALE 15:1	SIZE A	DRAWING NO. 168585	REV A
QA		DO NOT SCALE DRAWING			SHEET 1 OF 1
CUST					
REVISED					