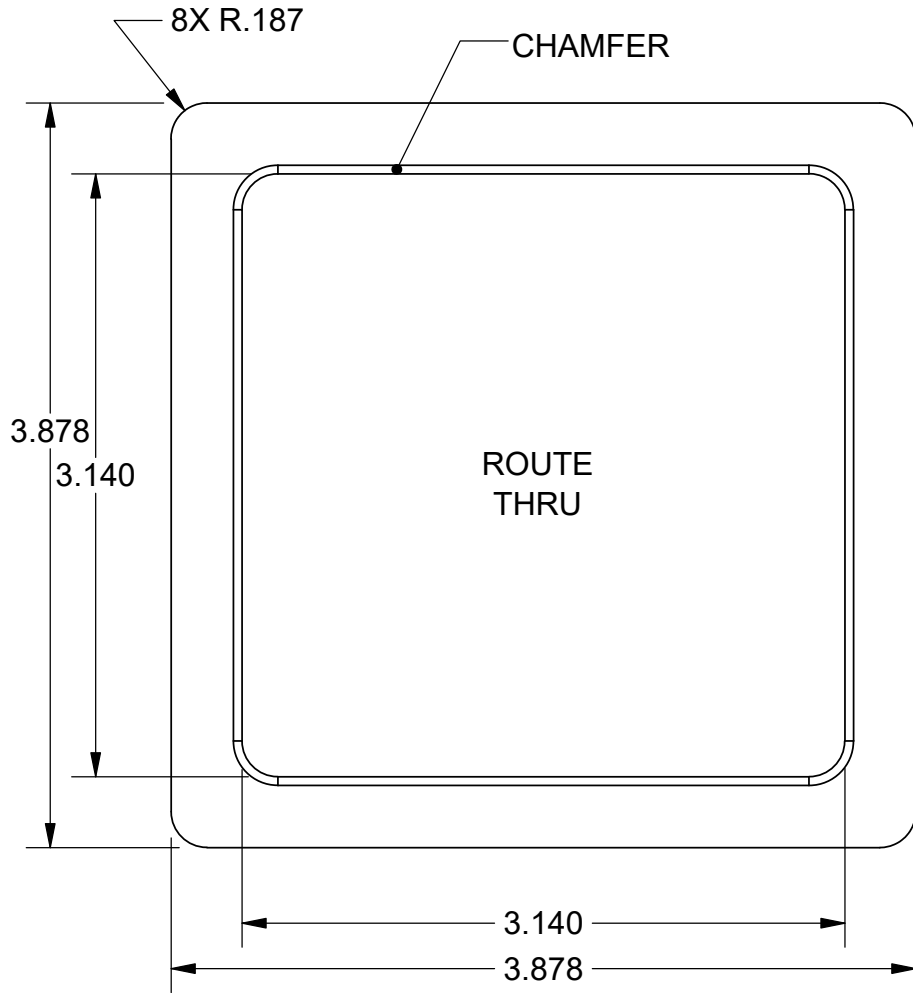
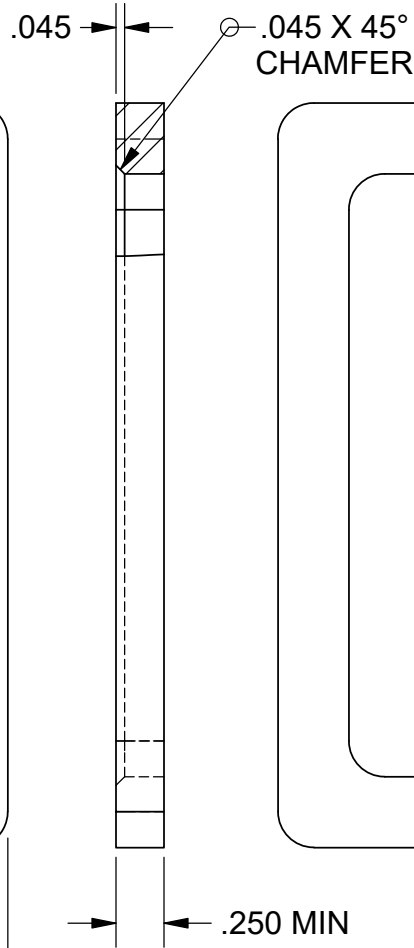


LAYER 1 - FRAME
ROUTING AND DRILL

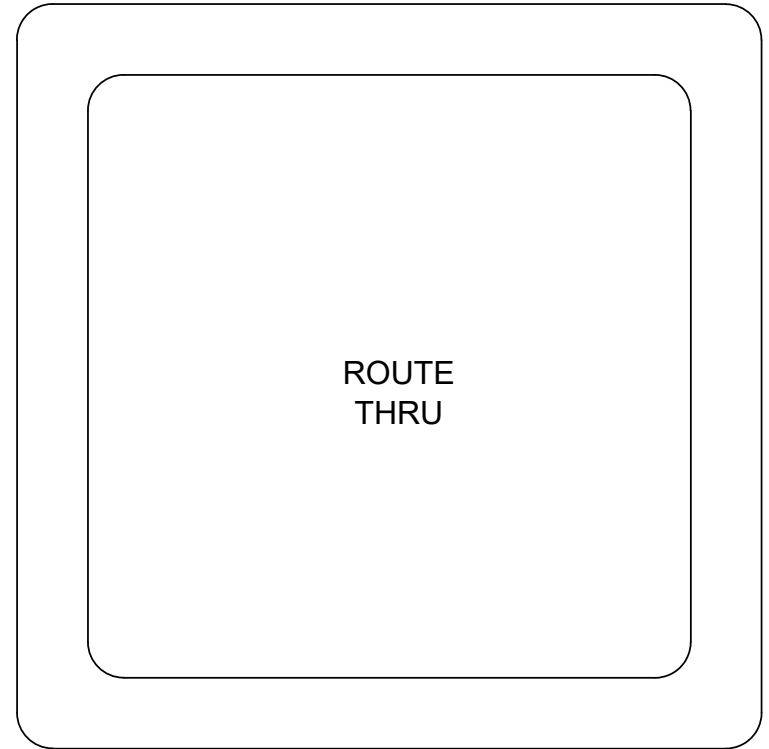
TOP




SIDE



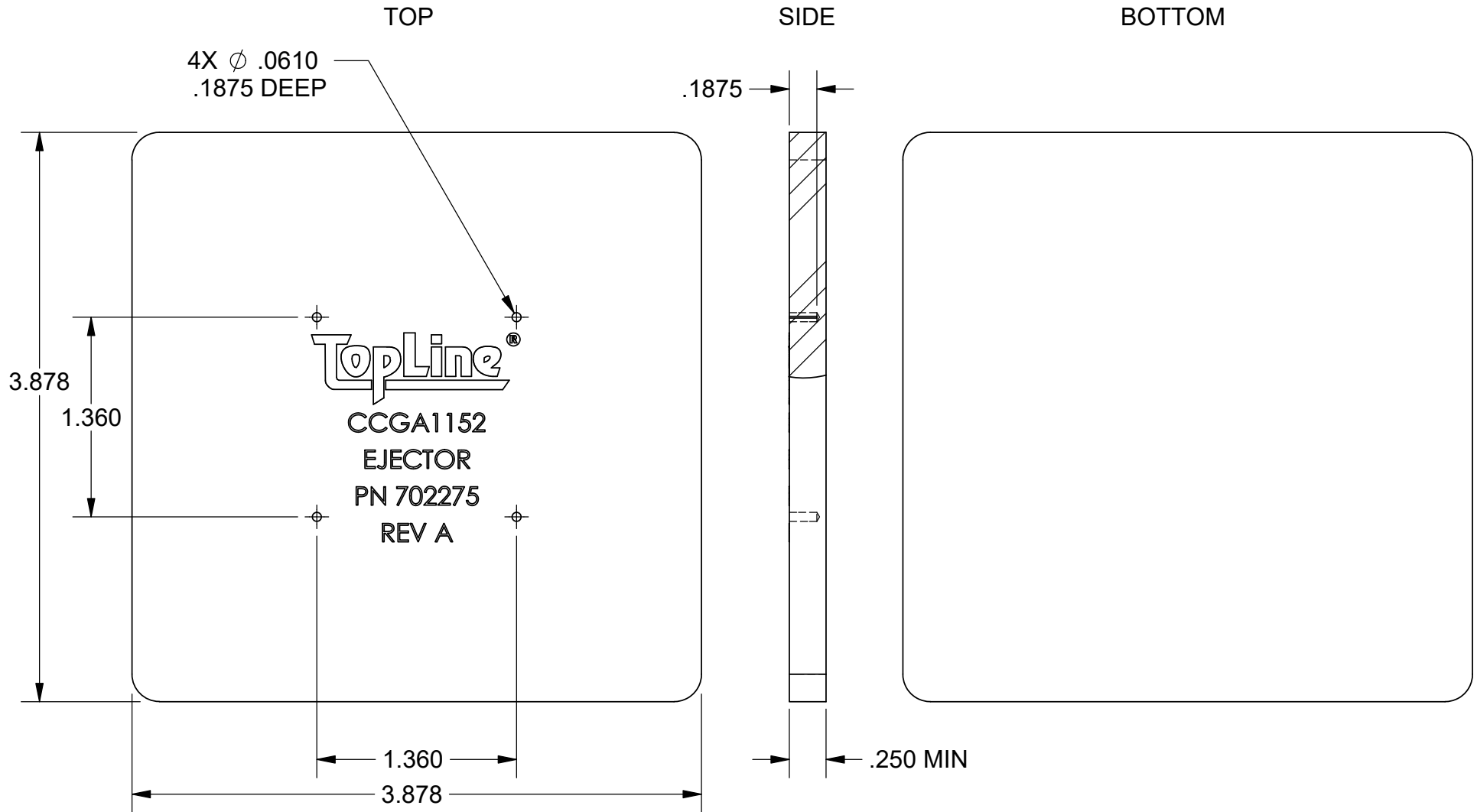
BOTTOM



NOTES: (UNLESS OTHERWISE SPECIFIED).
1) DIMENSIONS: INCHES.
2) MATERIAL: BLACK ESD FR4, 0.250" THICK.

APPROVALS		DATE				
DRAWN	J. Hines	1/9/18				
ENG	M. Hart	1/9/18	TITLE C7-EJECT-1152-A EJECTOR FOR LAPPING TOOL			
MFG						
QA			SCALE 1:1	SIZE A	DRAWING NO. 702275	REV A
CUST						
REVISED			DO NOT SCALE DRAWING		SHEET 1 OF 6	

LAYER 2 - BASE PLATE
ROUTING AND DRILL



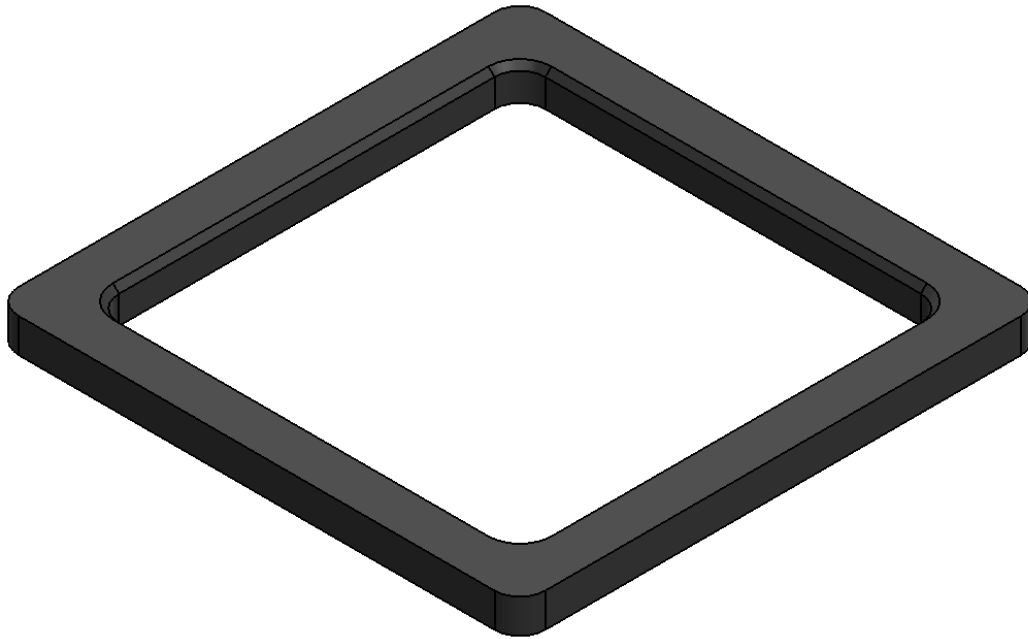
- NOTES:
 1) DIMENSIONS: INCHES.
 2) MATERIAL: BLACK ESD FR4.
 3) LEGEND: WHITE INK.

DRILL TABLE			
SYMBOL	Ø DIA	DEPTH	NBR
⊕	0.0610	0.1875	4

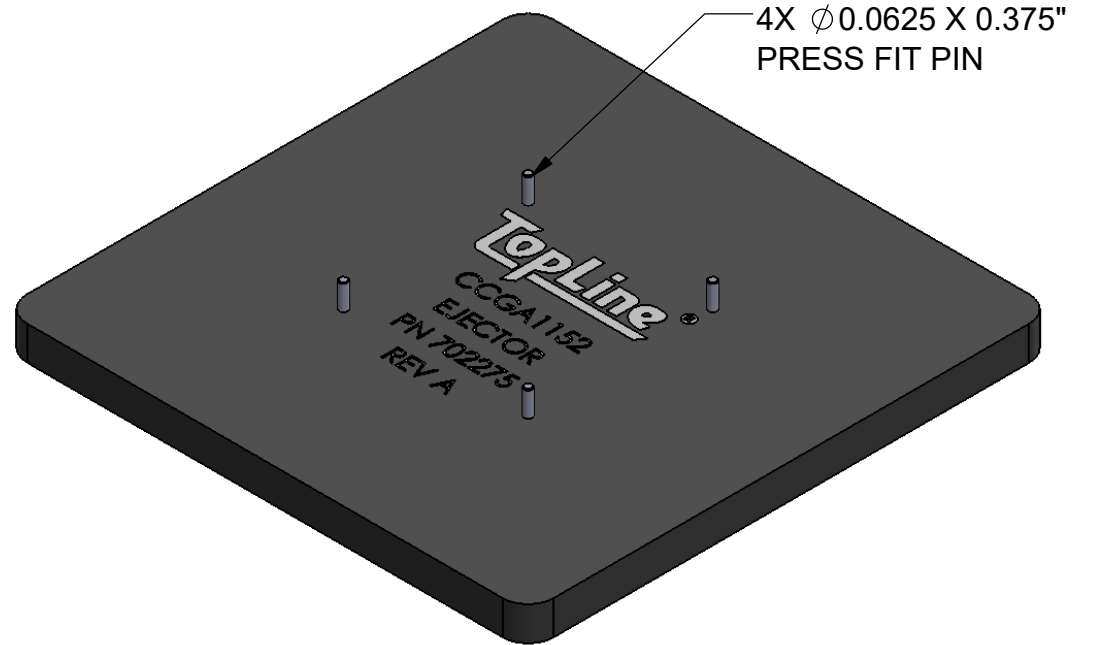
TopLine®			
TITLE		C7-EJECT-1152-A	
		EJECTOR FOR LAPPING TOOL	
SCALE	SIZE	DRAWING NO.	REV
1:1	A	702275	A
DO NOT SCALE DRAWING			SHEET 2 OF 6

LAYER 1 - FRAME

MODELS

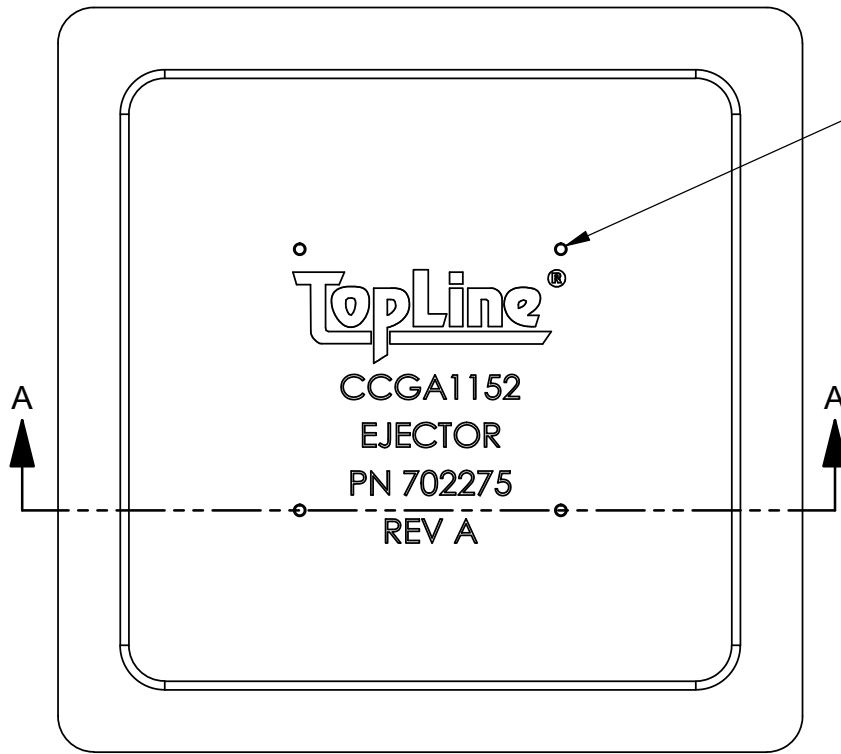


LAYER 2 - TOP

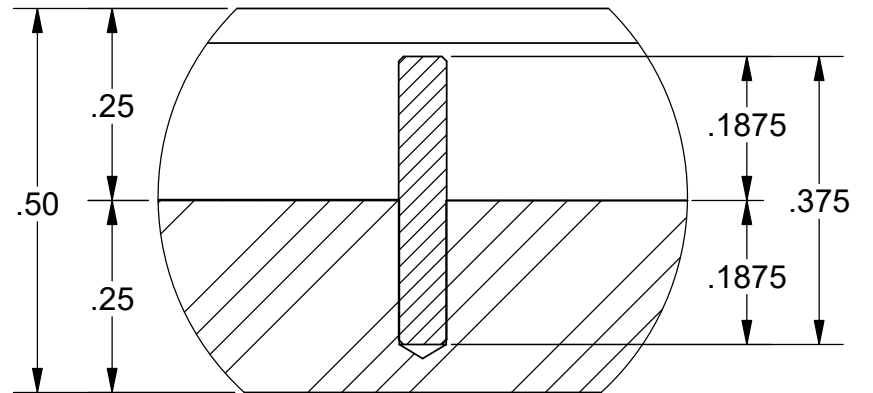


TITLE				C7-EJECT-1152-A EJECTOR FOR LAPPING TOOL			
SCALE		SIZE	DRAWING NO.		REV		
1:1		A	702275		A		
DO NOT SCALE DRAWING				SHEET 3 OF 6			

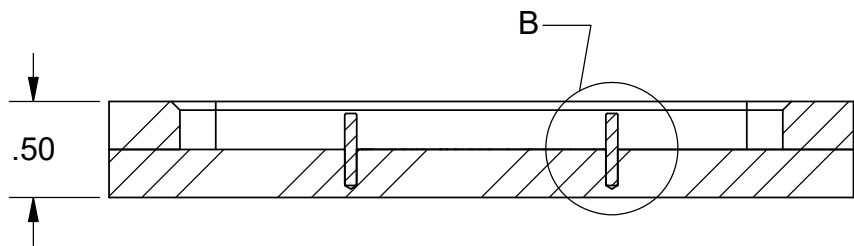
ASSEMBLY WITH PINS



PRESS FIT PINS OR
PERMANENT ADHESIVE
4 POSITIONS



DETAIL B
SCALE 4 : 1

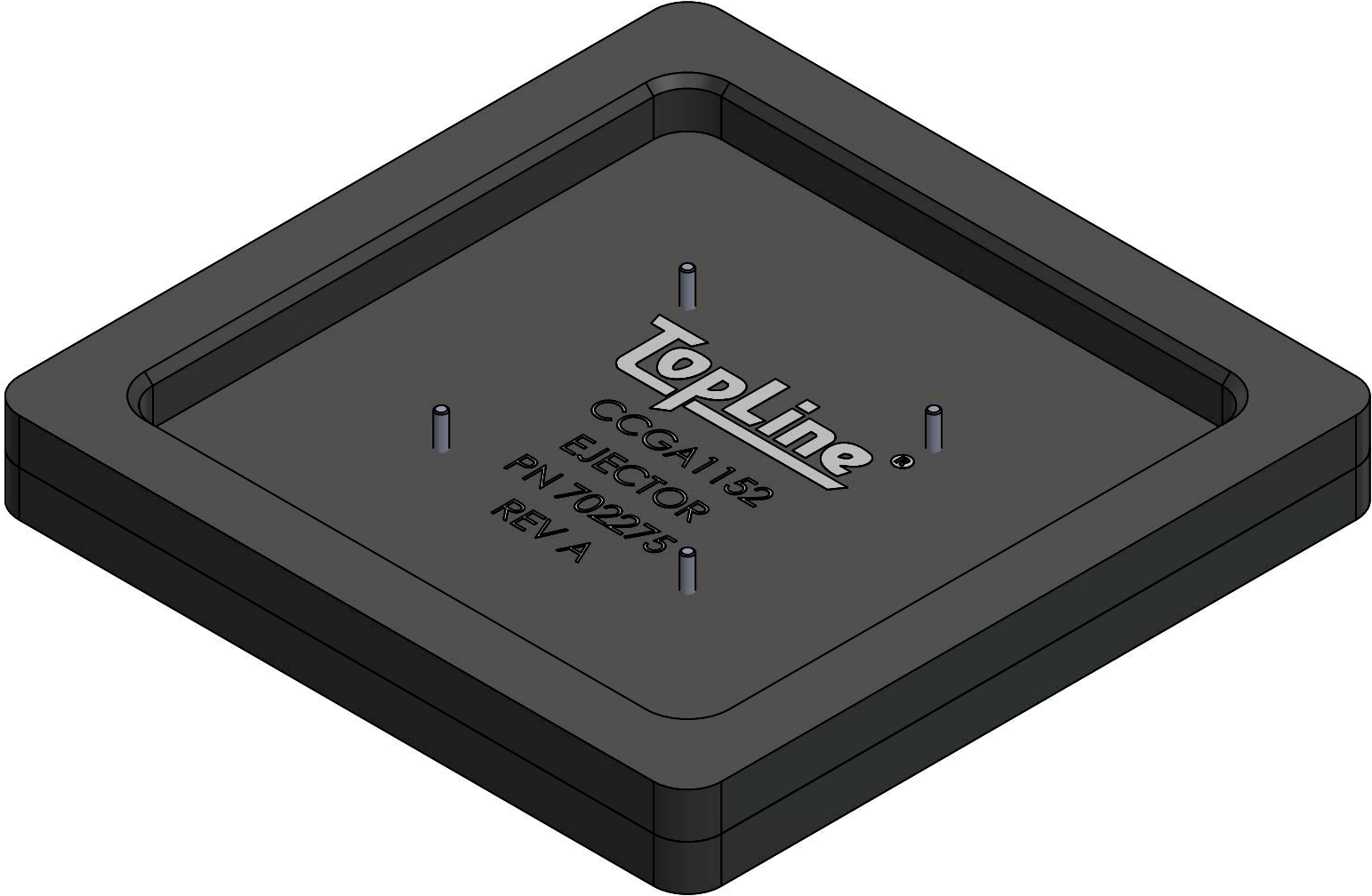


SECTION A-A

NOTES:
1) DIMENSIONS: INCHES.

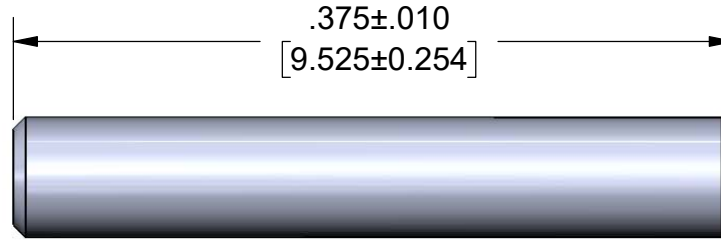
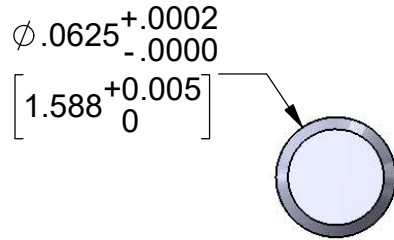
TopLine®			
TITLE C7-EJECT-1152-A EJECTOR FOR LAPPING TOOL			
SCALE 1:1	SIZE A	DRAWING NO. 702275	REV A
DO NOT SCALE DRAWING			SHEET 4 OF 6

ASSEMBLY MODEL

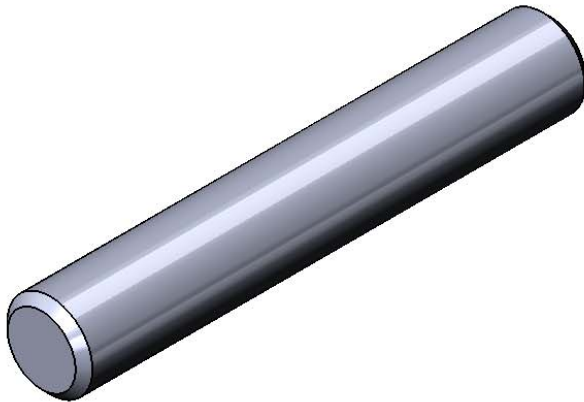


TopLine [®]			
TITLE		C7-EJECT-1152-A EJECTOR FOR LAPPING TOOL	
SCALE	SIZE	DRAWING NO.	REV
1.5:1	A	702275	A
DO NOT SCALE DRAWING			SHEET 5 OF 6

HARDWARE
STAINLESS STEEL PINS
DWG 702554



MODEL



NOTES:

- 1) DIMENSIONS: INCHES [MM].
- 2) MATERIAL: STAINLESS STEEL 316.

TopLine®			
TITLE C7-EJECT-1152-A EJECTOR FOR LAPPING TOOL			
SCALE 10:1	SIZE A	DRAWING NO. 702275	REV A
DO NOT SCALE DRAWING		SHEET 6 OF 6	