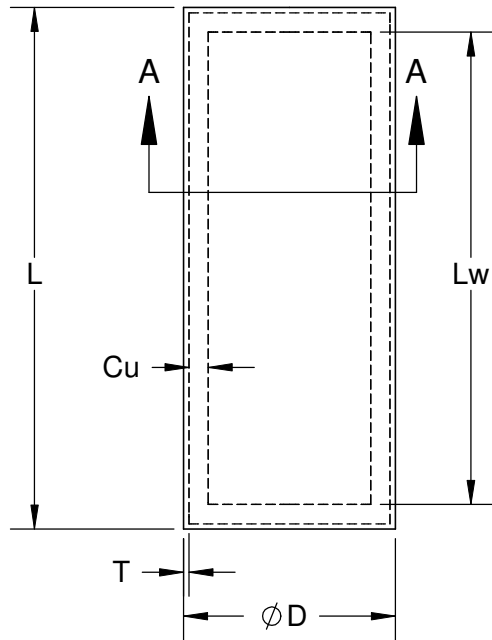
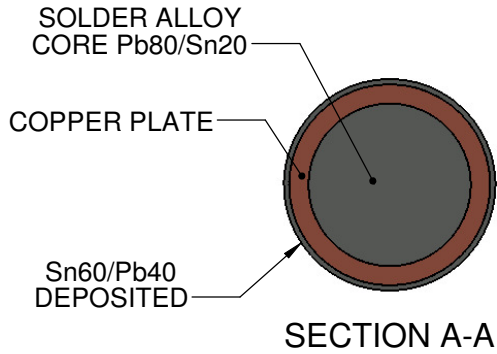


COPPER ON Pb80/Sn20 SOLDER WIRE ELECTRODEPOSITED WITH TIN-LEAD Sn60/Pb40

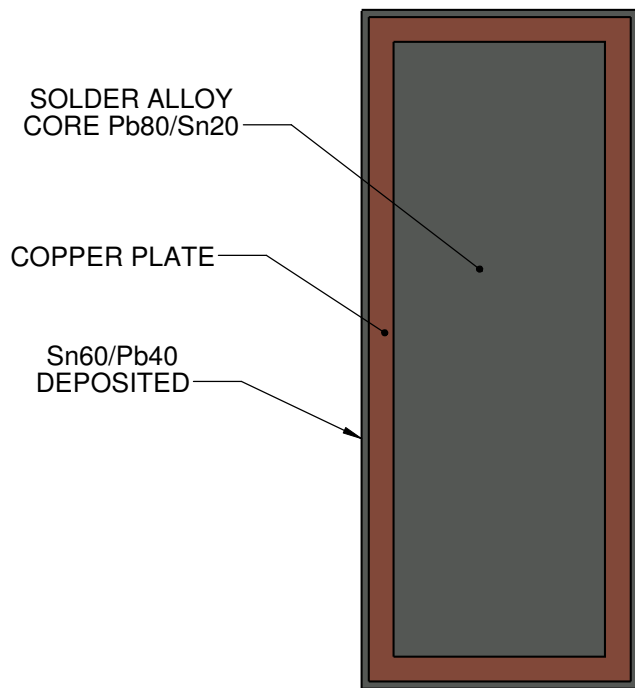
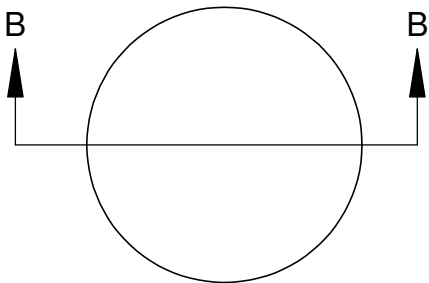


L Length (Inch)	ØD (Nominal) After Plating	Lw Solder Length	ØW Solder Core ± 0.4mil	Cu Thickness		T Sn60/Pb40 Thickness MAX	DWG
				MIN	MAX		
0.050" [1.27mm]	0.010" [0.25mm]	0.0047" [1.20mm]	0.0079" [0.20mm]	0.7mil [18µm]	0.8mil [20µm]	0.25mil [6.3µm]	841050
0.060" [1.50mm]	0.0110" [0.28mm]	0.057" [1.45mm]	0.0091" [0.23mm]	0.7mil [18µm]	0.8mil [20µm]	0.25mil [6.3µm]	841160
0.065" [1.65mm]	0.0118" [0.30mm]	0.063" [1.60mm]	0.0098" [0.25mm]	0.7mil [18µm]	0.8mil [20µm]	0.25mil [6.3µm]	841265
0.067" [1.70mm]	0.0130" [0.33mm]	0.065" [1.65mm]	0.0110" [0.28mm]	0.7mil [18µm]	0.8mil [20µm]	0.25mil [6.3µm]	841367
0.070" [1.80mm]	0.0138" [0.35mm]	0.069" [1.75mm]	0.0118" [0.30mm]	0.7mil [18µm]	0.8mil [20µm]	0.25mil [6.3µm]	841470
0.075" [1.90mm]	0.0150" [0.38mm]	0.073" [1.85mm]	0.0130" [0.33mm]	0.7mil [18µm]	0.8mil [20µm]	0.25mil [6.3µm]	841575
0.080" [2.00mm]	0.0157" [0.40mm]	0.077" [1.95mm]	0.0137" [0.35mm]	0.7mil [18µm]	0.8mil [20µm]	0.25mil [6.3µm]	841680
0.087" [2.21mm]	0.020" [0.51mm]	0.082" [2.08mm]	0.0150" [0.38mm]	1.5mil [38µm]	2.0mil [50µm]	0.5mil [12.7µm]	842087
0.100" [2.54mm]	0.020" [0.51mm]	0.095" [2.40mm]	0.0150" [0.38mm]	1.5mil [38µm]	2.0mil [50µm]	0.5mil [12.7µm]	842099
0.087" [2.21mm]	0.022" [0.56mm]	0.082" [2.08mm]	0.0169" [0.43mm]	1.5mil [38µm]	2.0mil [50µm]	0.5mil [12.7µm]	842287
0.100" [2.54mm]	0.022" [0.56mm]	0.095" [2.40mm]	0.0169" [0.43mm]	1.5mil [38µm]	2.0mil [50µm]	0.5mil [12.7µm]	842299

Notes: (Unless Otherwise Specified).

- 1) COPPER PLATING ON ALL SIDES INCLUDING ENDS.
- 2) Sn60/Pb40 PLATED ON ALL SIDES INCLUDING ENDS.

APPROVALS		DATE	TopLine [®]				
DRAWN	J. Hines	9/1/14					TITLE
ENG	M. Hart	9/1/14					
MFG			SCALE		SIZE	DRAWING NO.	REV
QA							
CUST			DO NOT SCALE DRAWING			SHEET 1 OF 2	
REVISED							



SECTION B-B

TopLine ®			
TITLE Pb80/Sn20 Solder Column Plated with Copper & Sn60/Pb40			
SCALE 65:1	SIZE A	DRAWING NO. 168001	REV A
DO NOT SCALE DRAWING			SHEET 2 OF 2