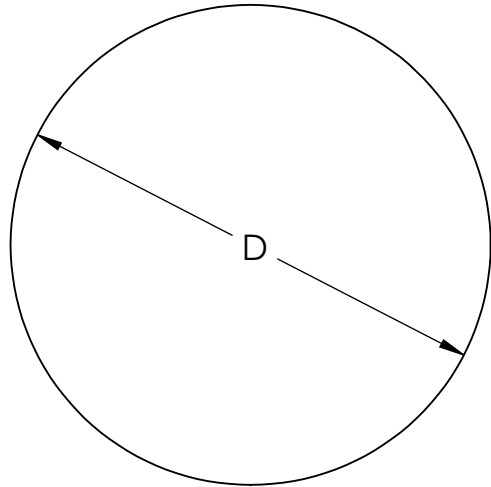
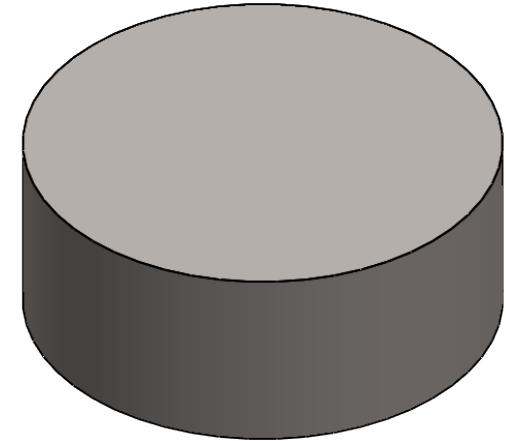


TOP VIEW



MODEL



SIDE VIEW



TOLERANCE		
	mm	INCH
D	±0.05	±0.002
H	±10%	±10%

- NOTES: (UNLESS OTHERWISE SPECIFIED)
1. DIMENSIONS INCHES [mm]
 2. MATERIAL: SAC305 Sn96.5/Ag3.0/Cu0.5
 3. FLUX: NONE.

APPROVALS	DATE	TopLine®			
DRAWN	9/19/2019				
ENG	9/19/2019	TITLE SOLDER PREFORM SAC305			
MFG		SCALE 8:1	SIZE A	DRAWING NO. 960001	REV A
QA					
CUST		DO NOT SCALE DRAWING			SHEET 1 OF 3
REVISED					

DIMENSION TABLE

DWG	DIAMETER D		HEIGHT H		VOLUME	
	Inch	mm	Inch	mm	mil ³	mm ³
	961004	0.010	0.25	0.004	0.10	314
961005	0.010	0.25	0.005	0.13	393	0.0020
961006	0.010	0.25	0.006	0.15	471	0.0023
961007	0.010	0.25	0.007	0.18	550	0.0028
961008	0.010	0.25	0.008	0.20	628	0.0031
961010	0.010	0.25	0.010	0.25	785	0.0039
961204	0.012	0.30	0.004	0.10	452	0.0023
961205	0.012	0.30	0.005	0.13	565	0.0029
961206	0.012	0.30	0.006	0.15	678	0.0034
961207	0.012	0.30	0.007	0.18	791	0.0041
961208	0.012	0.30	0.008	0.20	904	0.0045
961210	0.012	0.30	0.010	0.25	1130	0.0056
961404	0.014	0.35	0.004	0.10	615	0.0031
961405	0.014	0.35	0.005	0.13	769	0.0040
961406	0.014	0.35	0.006	0.15	923	0.0046
961407	0.014	0.35	0.007	0.18	1077	0.0055
961408	0.014	0.35	0.008	0.20	1231	0.0061
961410	0.014	0.35	0.010	0.25	1539	0.0077
961504	0.015	0.38	0.004	0.10	707	0.0036
961505	0.015	0.38	0.005	0.13	883	0.0047
961506	0.015	0.38	0.006	0.15	1060	0.0054
961507	0.015	0.38	0.007	0.18	1236	0.0065
961508	0.015	0.38	0.008	0.20	1413	0.0072
961510	0.015	0.38	0.010	0.25	1766	0.0090
961604	0.016	0.40	0.004	0.10	804	0.0040
961605	0.016	0.40	0.005	0.13	1005	0.0052
961606	0.016	0.40	0.006	0.15	1206	0.0060
961607	0.016	0.40	0.007	0.18	1407	0.0072
961608	0.016	0.40	0.008	0.20	1608	0.0080
961610	0.016	0.40	0.010	0.25	2010	0.0100

DWG	DIAMETER D		HEIGHT H		VOLUME	
	Inch	mm	Inch	mm	mil ³	mm ³
	961804	0.018	0.45	0.004	0.10	1017
961805	0.018	0.45	0.005	0.13	1272	0.0066
961806	0.018	0.45	0.006	0.15	1526	0.0076
961807	0.018	0.45	0.007	0.18	1780	0.0091
961808	0.018	0.45	0.008	0.20	2035	0.0101
961810	0.018	0.45	0.010	0.25	2543	0.0127
962004	0.020	0.50	0.004	0.10	1256	0.0063
962005	0.020	0.50	0.005	0.13	1570	0.0081
962006	0.020	0.50	0.006	0.15	1884	0.0094
962007	0.020	0.50	0.007	0.18	2198	0.0113
962008	0.020	0.50	0.008	0.20	2512	0.0125
962010	0.020	0.50	0.010	0.25	3140	0.0156
962404	0.024	0.60	0.004	0.10	1809	0.0090
962405	0.024	0.60	0.005	0.13	2261	0.0117
962406	0.024	0.60	0.006	0.15	2713	0.0135
962407	0.024	0.60	0.007	0.18	3165	0.0162
962408	0.024	0.60	0.008	0.20	3617	0.0180
962410	0.024	0.60	0.010	0.25	4522	0.0225
962804	0.028	0.70	0.004	0.10	2462	0.0123
962805	0.028	0.70	0.005	0.13	3077	0.0159
962806	0.028	0.70	0.006	0.15	3693	0.0184
962807	0.028	0.70	0.007	0.18	4308	0.0221
962808	0.028	0.70	0.008	0.20	4924	0.0245
962810	0.028	0.70	0.010	0.25	6154	0.0306
963004	0.030	0.76	0.004	0.10	2826	0.0144
963005	0.030	0.76	0.005	0.13	3533	0.0188
963006	0.030	0.76	0.006	0.15	4239	0.0217
963007	0.030	0.76	0.007	0.18	4946	0.0260
963008	0.030	0.76	0.008	0.20	5652	0.0289
963010	0.030	0.76	0.010	0.25	7065	0.0361



TITLE SOLDER PREFORM SAC305			
SCALE 40:1	SIZE A	DRAWING NO. 690001	REV A
DO NOT SCALE DRAWING		SHEET 2 OF 3	

DRAWING NUMBER SYSTEM

SAC305 LEAD FREE PREFORM

CYLINDRICAL SHAPE

96

ALLOY

96 = SAC305
Sn96.5/Ag3.0/Cu0.5

16

OPTION

10 = 10 MIL (0.25 mm)
12 = 12 MIL (0.30 mm)
13 = 13 MIL (0.33 mm)
14 = 14 MIL (0.35 mm)
15 = 15 MIL (0.38 mm)
16 = 16 MIL (0.40 mm)
18 = 18 MIL (0.45 mm)
20 = 20 MIL (0.50 mm)
24 = 24 MIL (0.60 mm)
28 = 28 MIL (0.70 mm)
30 = 30 MIL (0.76 mm)

08

HEIGHT

04 = 4 MIL (0.10 mm)
05 = 5 MIL (0.13 mm)
06 = 6 MIL (0.15 mm)
07 = 7 MIL (0.18 mm)
08 = 8 MIL (0.20 mm)
09 = 9 MIL (0.23 mm)
10 = 10 MIL (0.25 mm)
12 = 12 MIL (0.30 mm)
13 = 13 MIL (0.33 mm)
14 = 14 MIL (0.35 mm)

TopLine®

TITLE
SOLDER PREFORM
SAC305

SCALE NONE	SIZE A	DRAWING NO. 690001	REV A
---------------	-----------	-----------------------	----------

DO NOT SCALE DRAWING

SHEET 3 OF 3