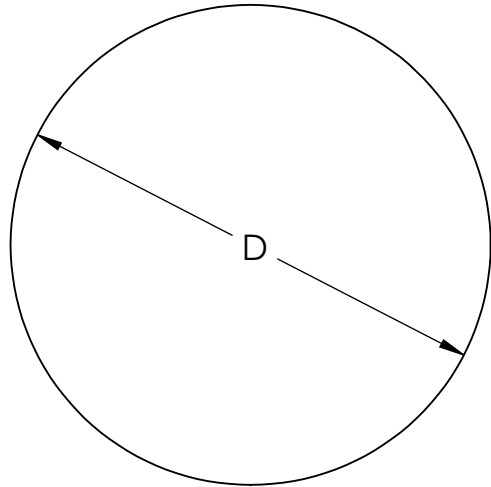
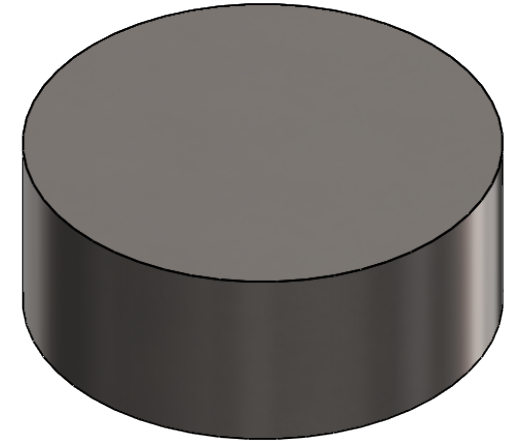


TOP VIEW



MODEL



SIDE VIEW



TOLERANCE		
	mm	INCH
D	±0.05	±0.002
H	±10%	±10%

- NOTES: (UNLESS OTHERWISE SPECIFIED)
1. DIMENSIONS INCHES [mm]
 2. MATERIAL: Sn63/Pb37
 3. FLUX: NONE

APPROVALS	DATE	TopLine®			
DRAWN	9/19/2019				
ENG	9/19/2019	TITLE SOLDER PREFORM Sn63/Pb37			
MFG		SCALE 8:1	SIZE A	DRAWING NO. 630001	REV A
QA					
CUST		DO NOT SCALE DRAWING			SHEET 1 OF 3
REVISED					

DIMENSION TABLE

DWG	DIAMETER D		HEIGHT H		VOLUME	
	Inch	mm	Inch	mm	mil ³	mm ³
631004	0.010	0.25	0.004	0.10	314	0.0016
631005	0.010	0.25	0.005	0.13	393	0.0020
631006	0.010	0.25	0.006	0.15	471	0.0023
631007	0.010	0.25	0.007	0.18	550	0.0028
631008	0.010	0.25	0.008	0.20	628	0.0031
631010	0.010	0.25	0.010	0.25	785	0.0039
631204	0.012	0.30	0.004	0.10	452	0.0023
631205	0.012	0.30	0.005	0.13	565	0.0029
631206	0.012	0.30	0.006	0.15	678	0.0034
631207	0.012	0.30	0.007	0.18	791	0.0041
631208	0.012	0.30	0.008	0.20	904	0.0045
631210	0.012	0.30	0.010	0.25	1130	0.0056
631404	0.014	0.35	0.004	0.10	615	0.0031
631405	0.014	0.35	0.005	0.13	769	0.0040
631406	0.014	0.35	0.006	0.15	923	0.0046
631407	0.014	0.35	0.007	0.18	1077	0.0055
631408	0.014	0.35	0.008	0.20	1231	0.0061
631410	0.014	0.35	0.010	0.25	1539	0.0077
631504	0.015	0.38	0.004	0.10	707	0.0036
631505	0.015	0.38	0.005	0.13	883	0.0047
631506	0.015	0.38	0.006	0.15	1060	0.0054
631507	0.015	0.38	0.007	0.18	1236	0.0065
631508	0.015	0.38	0.008	0.20	1413	0.0072
631510	0.015	0.38	0.010	0.25	1766	0.0090
631604	0.016	0.40	0.004	0.10	804	0.0040
631605	0.016	0.40	0.005	0.13	1005	0.0052
631606	0.016	0.40	0.006	0.15	1206	0.0060
631607	0.016	0.40	0.007	0.18	1407	0.0072
631608	0.016	0.40	0.008	0.20	1608	0.0080
631610	0.016	0.40	0.010	0.25	2010	0.0100

DWG	DIAMETER D		HEIGHT H		VOLUME	
	Inch	mm	Inch	mm	mil ³	mm ³
631804	0.018	0.45	0.004	0.10	1017	0.0051
631805	0.018	0.45	0.005	0.13	1272	0.0066
631806	0.018	0.45	0.006	0.15	1526	0.0076
631807	0.018	0.45	0.007	0.18	1780	0.0091
631808	0.018	0.45	0.008	0.20	2035	0.0101
631810	0.018	0.45	0.010	0.25	2543	0.0127
632004	0.020	0.50	0.004	0.10	1256	0.0063
632005	0.020	0.50	0.005	0.13	1570	0.0081
632006	0.020	0.50	0.006	0.15	1884	0.0094
632007	0.020	0.50	0.007	0.18	2198	0.0113
632008	0.020	0.50	0.008	0.20	2512	0.0125
632010	0.020	0.50	0.010	0.25	3140	0.0156
632404	0.024	0.60	0.004	0.10	1809	0.0090
632405	0.024	0.60	0.005	0.13	2261	0.0117
632406	0.024	0.60	0.006	0.15	2713	0.0135
632407	0.024	0.60	0.007	0.18	3165	0.0162
632408	0.024	0.60	0.008	0.20	3617	0.0180
632410	0.024	0.60	0.010	0.25	4522	0.0225
632804	0.028	0.70	0.004	0.10	2462	0.0123
632805	0.028	0.70	0.005	0.13	3077	0.0159
632806	0.028	0.70	0.006	0.15	3693	0.0184
632807	0.028	0.70	0.007	0.18	4308	0.0221
632808	0.028	0.70	0.008	0.20	4924	0.0245
632810	0.028	0.70	0.010	0.25	6154	0.0306
633004	0.030	0.76	0.004	0.10	2826	0.0144
633005	0.030	0.76	0.005	0.13	3533	0.0188
633006	0.030	0.76	0.006	0.15	4239	0.0217
633007	0.030	0.76	0.007	0.18	4946	0.0260
633008	0.030	0.76	0.008	0.20	5652	0.0289
633010	0.030	0.76	0.010	0.25	7065	0.0361



TITLE			
SOLDER PREFORM Sn63/Pb37			
SCALE	SIZE	DRAWING NO.	REV
40:1	A	630001	A
DO NOT SCALE DRAWING			SHEET 2 OF 3

DRAWING NUMBER SYSTEM

TIN / LEAD PREFORM

CYLINDRICAL SHAPE

63

ALLOY

63 = Sn63/Pb37
EUTECTIC

16

OPTION

10 = 10 MIL (0.25 mm)
 12 = 12 MIL (0.30 mm)
 13 = 13 MIL (0.33 mm)
 14 = 14 MIL (0.35 mm)
 15 = 15 MIL (0.38 mm)
 16 = 16 MIL (0.40 mm)
 18 = 18 MIL (0.45 mm)
 20 = 20 MIL (0.50 mm)
 24 = 24 MIL (0.60 mm)
 28 = 28 MIL (0.70 mm)
 30 = 30 MIL (0.76 mm)

08

HEIGHT

04 = 4 MIL (0.10 mm)
 05 = 5 MIL (0.13 mm)
 06 = 6 MIL (0.15 mm)
 07 = 7 MIL (0.18 mm)
 08 = 8 MIL (0.20 mm)
 09 = 9 MIL (0.23 mm)
 10 = 10 MIL (0.25 mm)
 12 = 12 MIL (0.30 mm)
 13 = 13 MIL (0.33 mm)
 14 = 14 MIL (0.35 mm)

TopLine®

TITLE
SOLDER PREFORM
Sn63/Pb37

SCALE NONE	SIZE A	DRAWING NO. 630001	REV A
---------------	-----------	-----------------------	----------

DO NOT SCALE DRAWING

SHEET 3 OF 3