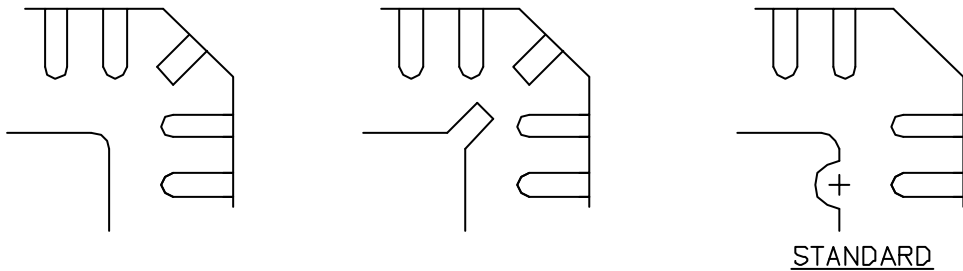
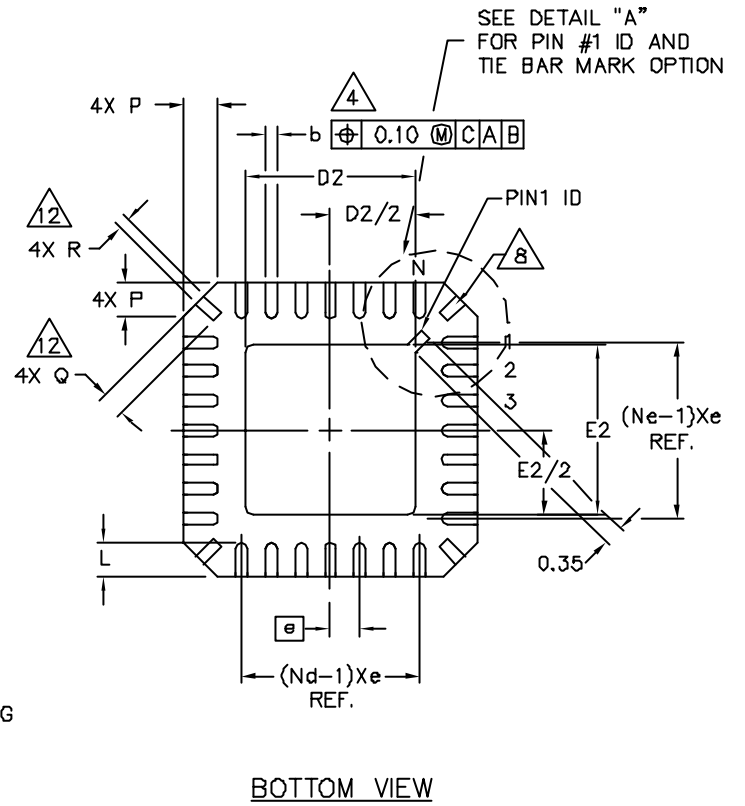
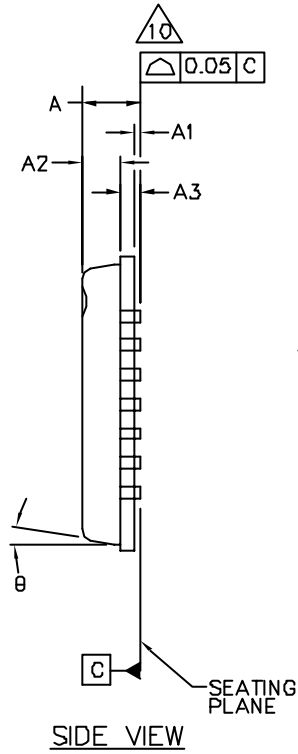
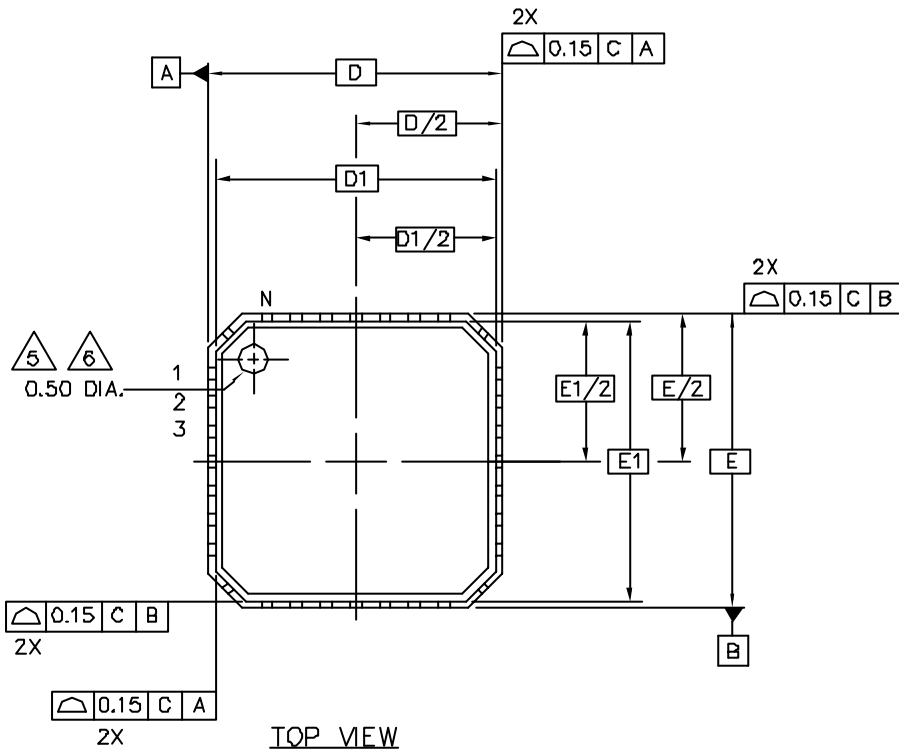


# NORMAL MATRIX LEADFRAME



DETAIL "A" - PIN #1 ID AND TIE BAR MARK OPTION

TITLE			
PACKAGE OUTLINE, MLF, 5 X 5 mm BODY			
SIZE	FIG NUMBER	REV	NO
A3		45279	07
SCALE		PRINTING IS SCALED TO FIT DO NOT SCALE DRAWING	SHEET
			2 OF 0

SYMBOL	PITCH VARIATION A			NOTE	SYMBOL	PITCH VARIATION B			NOTE	SYMBOL	PITCH VARIATION C			NOTE	SYMBOL	PITCH VARIATION D			NOTE
	MIN.	NOM.	MAX.			MIN.	NOM.	MAX.			MIN.	NOM.	MAX.			MIN.	NOM.	MAX.	
ⓐ	0.80 BSC				ⓐ	0.65 BSC				ⓐ	0.50 BSC				ⓐ	0.50 BSC			
N	16			3	N	20			3	N	28			3	N	32			3
Nd	4			3	Nd	5			3	Nd	7			3	Nd	8			3
Ne	4			3	Ne	5			3	Ne	7			3	Ne	8			3
L	0.50	0.60	0.75		L	0.50	0.60	0.75		L	0.50	0.60	0.75		L	0.30	0.40	0.50	
b	0.28	0.33	0.40	4	b	0.23	0.28	0.35	4	b	0.18	0.23	0.30	4	b	0.18	0.23	0.30	4
Q	0.30	0.40	0.65	12	Q	0.30	0.40	0.65	12	Q	0.30	0.40	0.65	12	Q	0.00	0.20	0.45	12
D2	SEE EXPOSED PAD VARIATION:A, B				D2	SEE EXPOSED PAD VARIATION:A, B				D2	SEE EXPOSED PAD VARIATION:A, B				D2	SEE EXPOSED PAD VARIATION:B,C,D			
E2	SEE EXPOSED PAD VARIATION:A, B				E2	SEE EXPOSED PAD VARIATION:A, B				E2	SEE EXPOSED PAD VARIATION:A, B				E2	SEE EXPOSED PAD VARIATION:B,C,D			
*** D2	SEE EXPOSED PAD VARIATION			*	D2	SEE EXPOSED PAD VARIATION			*	D2	SEE EXPOSED PAD VARIATION			*	D2	SEE EXPOSED PAD VARIATION:G			
*** E2	SEE EXPOSED PAD VARIATION			*	E2	SEE EXPOSED PAD VARIATION			*	E2	SEE EXPOSED PAD VARIATION			*	E2	SEE EXPOSED PAD VARIATION:G			
*** D3	SEE MIXED RING PAD VARIATION			*	D3	SEE MIXED RING PAD VARIATION			*	D3	SEE MIXED RING PAD VARIATION			*	D3	SEE MIXED RING PAD VARIATION:H			
*** E3	SEE MIXED RING PAD VARIATION			*	E3	SEE MIXED RING PAD VARIATION			*	E3	SEE MIXED RING PAD VARIATION			*	E3	SEE MIXED RING PAD VARIATION:H			

<STANDARD>

SYMBOLS		D2			E2			NOTE
		MIN	NOM	MAX	MIN	NOM	MAX	
EXPOSED PAD VARIATIONS	A	2.55	2.70	2.85	2.55	2.70	2.85	
	B	2.95	3.10	3.25	2.95	3.10	3.25	
	C	3.15	3.30	3.45	3.15	3.30	3.45	
	D	3.35	3.50	3.75	3.35	3.50	3.75	

EXAMPLE ; WE CAN CALL VARIATION "BB" FOR 20 TERMINAL MLF2 WITH 3.10 mm X 3.10 mm NOMINAL EXPOSED PAD DIMENSION. THE FORMER ONE IN VARIATION IS FOR PITCH VARIATION AND THE LATER ONE IS FOR EXPOSED PAD VARIATION.

EXAMPLE ; WE CAN CALL VARIATION "DDA" FOR 32 TERMINAL MLF2 WITH 2.30 mm X 2.30 mm NOMINAL EXPOSED PAD DIMENSION, AND WITH 3.50 mm X 3.50 mm NOMINAL EXPOSED MIXED RING PAD DIMENSION. THE FORMER ONE IN VARIATION IS FOR PITCH VARIATION AND THE LATER ONES ARE FOR EXPOSED PAD AND MIXED RING PAD VARIATION.

\* NOT DESIGNED YET  
 \*\* DESIGNED BUT NOT TOOLED UP  
 \*\*\* APPLIES TO MIXED RING PAD DESIGN ONLY

SYMBOL	COMMON DIMENSIONS			NOTE
	MIN.	NOM.	MAX.	
A	-	0.85	0.90	
A1	0.00	0.01	0.05	11
A2	-	0.65	0.70	
A3	0.20 REF.			
D	5.00 BSC			
D1	4.75 BSC			
E	5.00 BSC			
E1	4.75 BSC			
θ			12°	
P	0.24	0.42	0.60	
R	0.13	0.17	0.23	12
*** K	0.20	0.30	0.40	
*** S	0.50	0.60	0.65	
*** J	0.60	1.00	1.50	

TITLE			
PACKAGE OUTLINE, MLF , 5 X 5 mm BODY			
REV	DATE	BY	NO.
A3			07
SCALE		45279	4 OF 5
PRINTING IS SCALED TO FIT DO NOT SCALE DRAWING			