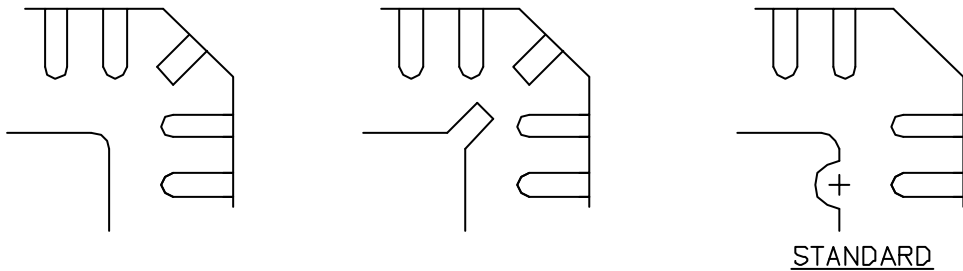
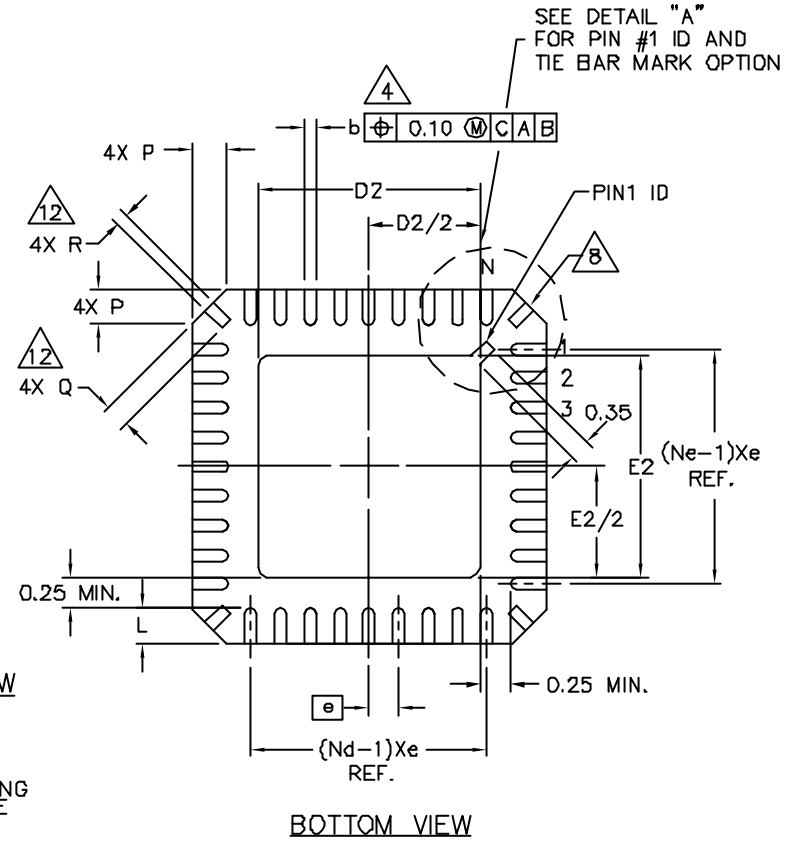
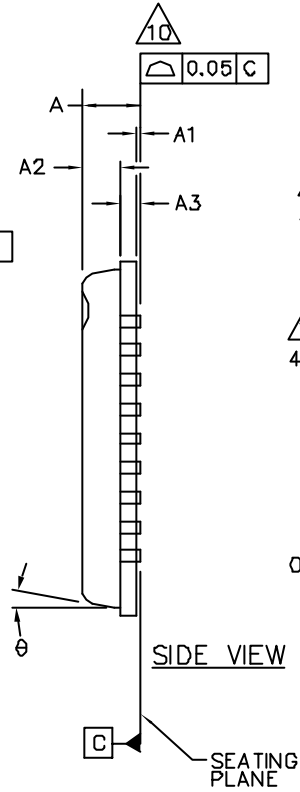
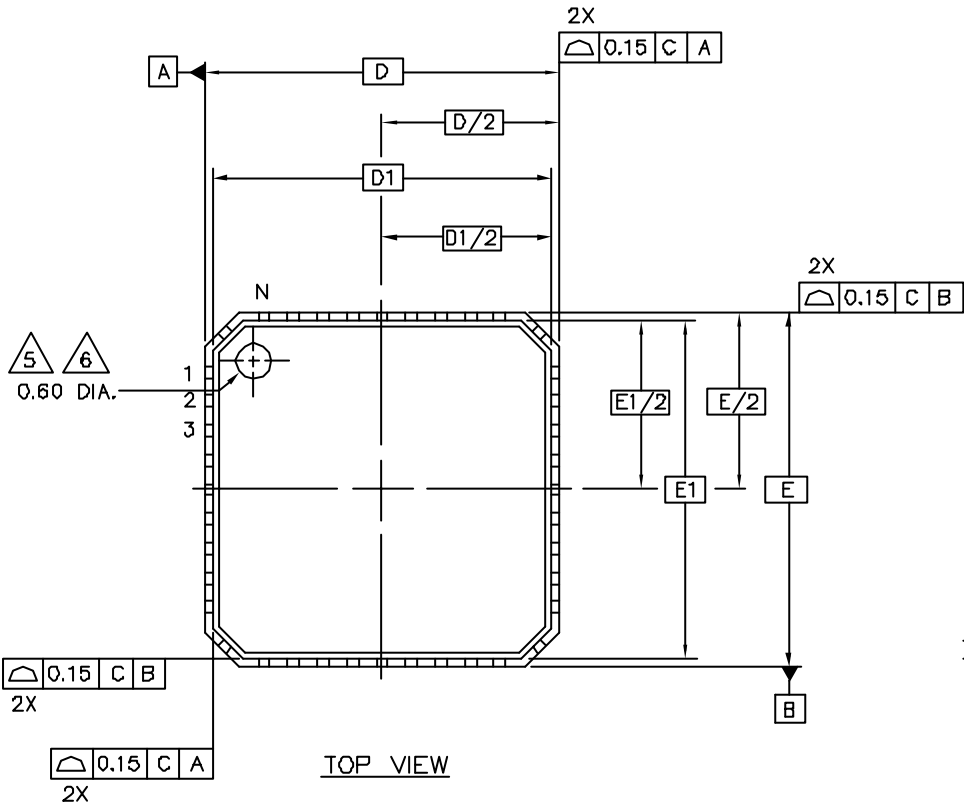


NORMAL MATRIX LEADFRAME



SEE DETAIL "A"
FOR PIN #1 ID AND
TIE BAR MARK OPTION

TITLE			
PACKAGE OUTLINE, MLF, 6 X 6 mm BODY			
SIZE	REV	DATE	NO
A3		4527B	A5
DRAWN			2 OF 0
PRINTING IS SCALED TO FIT DO NOT SCALE DRAWING			

SYMBOL	PITCH VARIATION A			NOTE	SYMBOL	PITCH VARIATION B			NOTE	SYMBOL	PITCH VARIATION C			NOTE	SYMBOL	PITCH VARIATION D			NOTE
	MIN.	NOM.	MAX.			MIN.	NOM.	MAX.			MIN.	NOM.	MAX.			MIN.	NOM.	MAX.	
ⓐ	0.80 BSC				ⓐ	0.65 BSC				ⓐ	0.50 BSC				ⓐ	0.50 BSC			
N	20			3	N	28			3	N	36			3	N	40			3
Nd	5			3	Nd	7			3	Nd	9			3	Nd	10			3
Ne	5			3	Ne	7			3	Ne	9			3	Ne	10			3
L	0.50	0.60	0.75		L	0.50	0.60	0.75		L	0.50	0.60	0.75		L	0.30	0.40	0.50	
b	0.28	0.33	0.40	4	b	0.23	0.28	0.35	4	b	0.18	0.23	0.30	4	b	0.18	0.23	0.30	4
Q	0.30	0.40	0.65	12	Q	0.30	0.40	0.65	12	Q	0.30	0.40	0.65	12	Q	0.00	0.20	0.45	12
D2	SEE EXPOSED PAD VARIATION: A				D2	SEE EXPOSED PAD VARIATION: A, B				D2	SEE EXPOSED PAD VARIATION: A				D2	SEE EXPOSED PAD VARIATION: B, C			
E2	SEE EXPOSED PAD VARIATION: A				E2	SEE EXPOSED PAD VARIATION: A, B				E2	SEE EXPOSED PAD VARIATION: A				E2	SEE EXPOSED PAD VARIATION: B, C			
*** D2	SEE EXPOSED PAD VARIATION			*	D2	SEE EXPOSED PAD VARIATION			*	D2	SEE EXPOSED PAD VARIATION			*	D2	SEE EXPOSED PAD VARIATION: D			**
*** E2	SEE EXPOSED PAD VARIATION			*	E2	SEE EXPOSED PAD VARIATION			*	E2	SEE EXPOSED PAD VARIATION			*	E2	SEE EXPOSED PAD VARIATION: D			**
*** D3	SEE MIXED RING PAD VARIATION			*	D3	SEE MIXED RING PAD VARIATION			*	D3	SEE MIXED RING PAD VARIATION			*	D3	SEE MIXED RING PAD VARIATION: A			**
*** E3	SEE MIXED RING PAD VARIATION			*	E3	SEE MIXED RING PAD VARIATION			*	E3	SEE MIXED RING PAD VARIATION			*	E3	SEE MIXED RING PAD VARIATION: A			**

<STANDARD>

* NOT DESIGNED YET
 ** DESIGNED BUT NOT TOOLED UP
 *** APPLIES TO MIXED RING PAD DESIGN ONLY

SYMBOLS	D2			E2			NOTE	
	MIN	NOM	MAX	MIN	NOM	MAX		
EXPOSED PAD VARIATIONS	A	3.55	3.70	3.85	3.55	3.70	3.85	
	B	3.95	4.10	4.25	3.95	4.10	4.25	
	C	4.15	4.30	4.45	4.15	4.30	4.45	

EXAMPLE ; WE CAN CALL VARIATION "BB" FOR 28 TERMINAL MLF2 WITH 4.10 mm X 4.10 mm NOMINAL EXPOSED PAD DIMENSION. THE FORMER ONE IN VARIATION IS FOR PITCH VARIATION AND THE LATER ONE IS FOR EXPOSED PAD VARIATION.

<MIXED RING>

SYMBOLS	D2			E2			
	MIN	NOM	MAX	MIN	NOM	MAX	
EXPOSED PAD VARIATIONS	D	2.95	3.10	3.25	2.95	3.10	3.25
SYMBOLS	D3			E3			
	MIN	NOM	MAX	MIN	NOM	MAX	
MIXED RING PAD VARIATIONS	A	4.15	4.30	4.45	4.15	4.30	4.45

EXAMPLE ; WE CAN CALL VARIATION "DDA" FOR 40 TERMINAL MLF2 WITH 3.10 mm X 3.10 mm NOMINAL EXPOSED PAD DIMENSION, AND WITH 4.30 mm X 4.30 mm NOMINAL EXPOSED MIXED RING PAD DIMENSION. THE FORMER ONE IN VARIATION IS FOR PITCH VARIATION AND THE LATER ONES ARE FOR EXPOSED PAD AND MIXED RING PAD VARIATION.

SYMBOL	COMMON DIMENSIONS			NOTE
	MIN.	NOM.	MAX.	
A	-	0.85	0.90	
A1	0.00	0.01	0.05	11
A2	-	0.65	0.80	
A3	0.20 REF.			
D	6.00 BSC			
D1	5.75 BSC			
E	6.00 BSC			
E1	5.75 BSC			
θ	12°			
P	0.24	0.42	0.60	
R	0.13	0.17	0.23	12
*** K	0.20	0.30	0.40	
*** S	0.50	0.60	0.65	
*** J	0.60	1.00	1.50	

TITLE			
PACKAGE OUTLINE, MLF , 6 X 6 mm BODY			
REV	DATE	BY	CHKD
A3		45278	D6
SCALE		PRINTING IS SCALED TO FIT DO NOT SCALE DRAWING	
		4 OF 5	