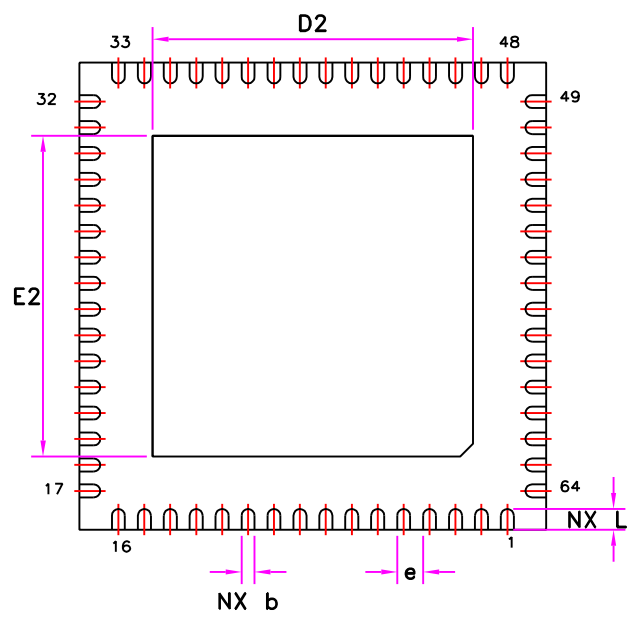
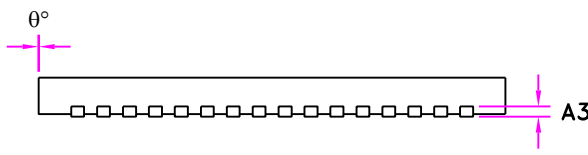
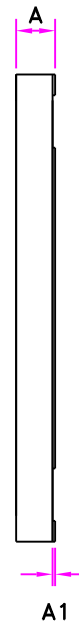
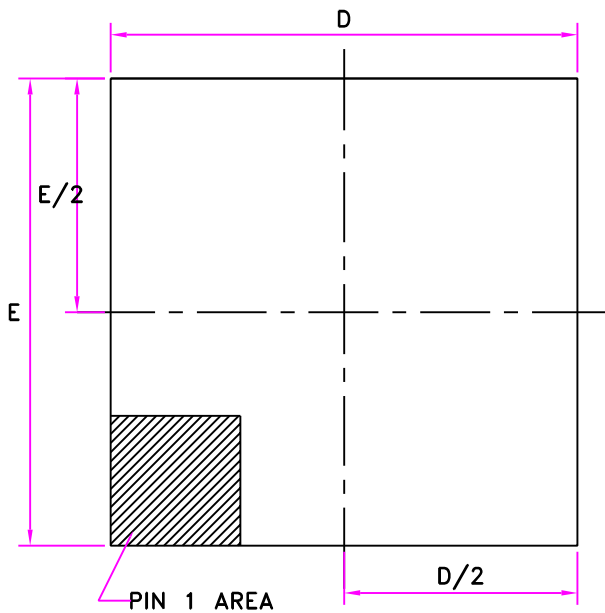


9 X 9 MM TQLMP
THIN QUAD LEADLESS MOLDED PACKAGE

PACKAGE INFORMATION



| | | | | |
|----------------|---------------|-------|-----------|--------|
| JEDEC# | MO 220 / WMMD | | | |
| TYPE | 64 LEAD | | | |
| Dimension | mm | | mils | |
| SYMBOL | Min | Max | Min | Max |
| A | 0.70 | 0.80 | 27.56 | 31.49 |
| A1 | 0 | 0.05 | 0 | 1.97 |
| A3 | 0.175 | 0.225 | 6.89 | 8.86 |
| D | 8.9 | 9.1 | 350.39 | 358.27 |
| E | 8.9 | 9.1 | 350.39 | 358.27 |
| D2 | 6.13 | 6.23 | 241.34 | 245.28 |
| E2 | 6.13 | 6.23 | 241.34 | 245.28 |
| e | 0.5 BSC | | 19.69 BSC | |
| NX b | 0.20 | 0.30 | 7.87 | 11.81 |
| NX L | 0.35 | 0.45 | 13.78 | 17.72 |
| θ° | 0° | 4° | 0° | 4° |
| ND | 16 | | | |
| NE | 16 | | | |

NOTES

1. SPADE WIDTH, LEAD WIDTH AND LEAD THICKNESS EXCLUSIVE OF SOLDER PLATE
2. PACKAGE OUTLINE EXCLUSIVE OF MOLD FLASHES AND BURR DIMENSIONS
3. COPLANARITY APPLIES TO THE EXPOSED PAD AS WELL AS THE TERMINALS. COPLANARITY SHALL NOT EXCEED 0.08mm.
4. WARPAGE SHALL NOT EXCEED 0.10mm.
5. THE TERMINAL #1 IDENTIFIER AND TERMINAL NUMBERING CONVENTION SHALL CONFORM TO JESD 95-1 SPP-012. DETAILS OF TERMINAL #1 IDENTIFIER ARE OPTIONAL, BUT MUST BE LOCATED WITHIN THE ZONE INDICATED. THE TERMINAL #1 IDENTIFIER MAY BE EITHER A MOLD OR MARKED FEATURE.
6. ND AND NE REFER TO THE NUMBER OF TERMINALS ON EACH D AND E SIDE RESPECTIVELY.

| | | | |
|------------------|--------------------------------|----------|----------|
| PREPARED BY SPL | REF. NO. DIM-LMP-9X9 | REV. NO. | |
| CHECKED BY Selva | | 0 | |
| APPROVED BY NJC | | DATE | 02.12.06 |