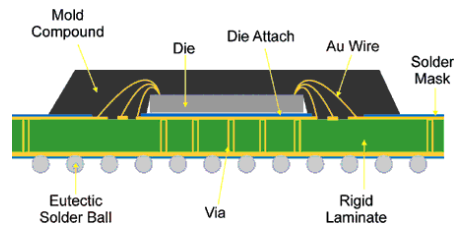
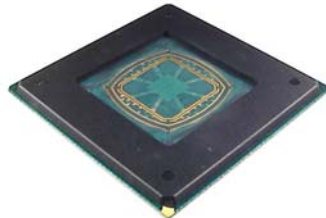


QP-BGA and QP-CSP Series
Quik-Pak® Open Cavity Package

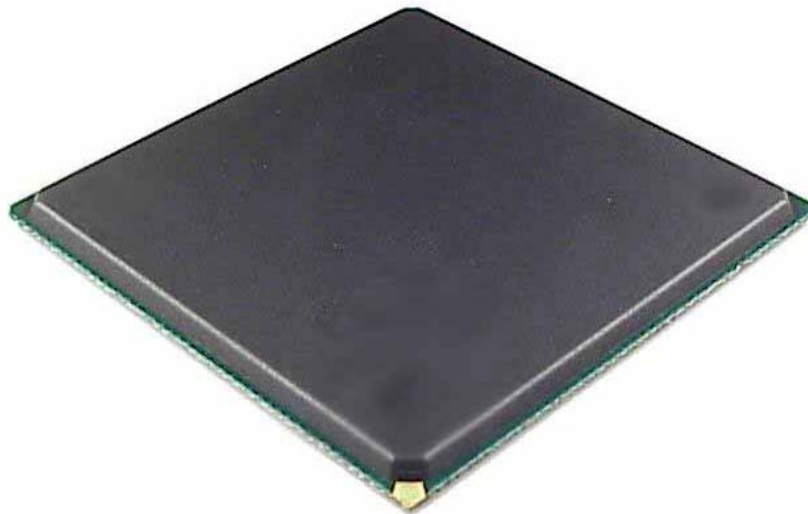
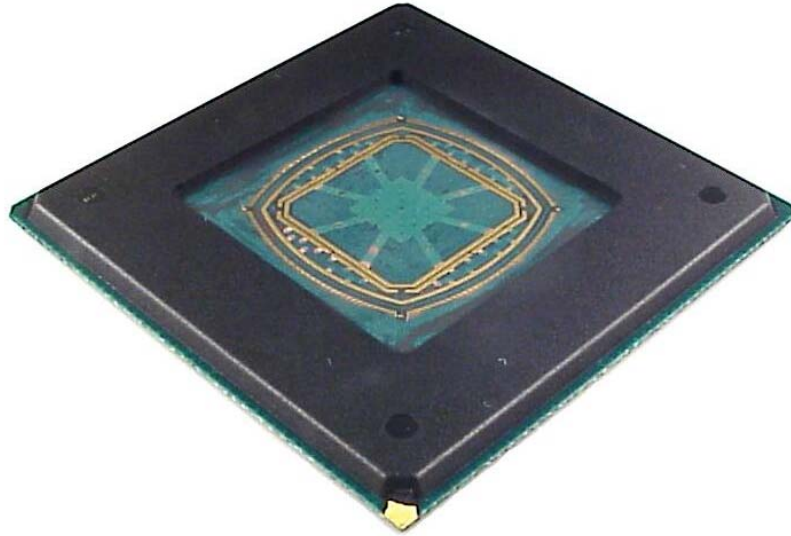


Cross Sectional View

Body Size	I/O Ball Count	Pitch	Matrix Row x Column	Array Type	Theoretical Min / Max Die Size	Part Number
5mm	40	0.5mm	8 x 8	2 Row	1.3 ~ 2.3mm	QP-CSP40T.5-8P2
6mm	56	0.5mm	10 x 10	2 Row	1.3 ~ 2.3mm	QP-CSP56T.5-10P2
7mm	84	0.5mm	12 x 12	3 Row	1.3 ~ 4.3mm	QP-CSP84T.5-12P3
8mm	108	0.5mm	14 x 14	3 Row	1.3 ~ 5.4mm	QP-CSP108T.5-14P3
6mm	36	0.8mm	6 x 6	Full Array	1.3 ~ 3.2mm	QP-BGA36T.8-6F
7mm	49	0.8mm	7 x 7	Full Array	1.3 ~ 5.1mm	QP-BGA49T.8-7F
8mm	64	0.8mm	8 x 8	Full Array	1.3 ~ 6.1mm	QP-BGA64T.8-8F
9mm	81	0.8mm	9 x 9	Full Array	2.5 ~ 7.1mm	QP-BGA81T.8-9F
10mm	100	0.8mm	10 x 10	Full Array	3.3 ~ 8.0mm	QP-BGA100T.8-10F
10mm	121	0.8mm	11 x 11	Full Array	2.0 ~ 6.7mm	QP-BGA121T.8-11F
12mm	144	0.8mm	13 x 13	4-Row	4.2 ~ 8.9mm	QP-BGA144T.8-13P4
12mm	160	0.8mm	14 x 14	4-Row	4.5 ~ 9.2mm	QP-BGA160T.8-14P4
13mm	176	0.8mm	15 x 15	4-Row	4.3 ~ 8.9mm	QP-BGA176T.8-15P4
13mm	224	0.8mm	15 x 15	Full Array	5.3 ~ 10mm	QP-BGA224T.8-15F
14mm	192	0.8mm	16 x 16	4-Row	6.4 ~ 11.1mm	QP-BGA192T.8-16P4
15mm	208	0.8mm	17 x 17	4-Row	4.4 ~ 9.1mm	QP-BGA-208T.8-17P4
17mm	256	0.8mm	20 x 20	4-Row	5.6 ~ 10.2mm	QP-BGA256T.8-20P4
19mm	288	0.8mm	22 x 22	4-Row	10.9 ~ 15.6mm	QP-BGA288T.8-22P4
19mm	324	0.8mm	22 x 22	4-Row +	10.9 ~ 15.6mm	QP-BGA324T.8-22P4C
9mm	64	1.0mm	8 x 8	Full Array	1.9 ~ 6.6mm	QP-BGA64T1.0-8F
10mm	81	1.0mm	9 x 9	Full Array	2.3 ~ 9.0mm	QP-BGA81T1.0-9F
11mm	100	1.0mm	10 x 10	Full Array	4.4 ~ 9.1mm	QP-BGA100T1.0-10F
12mm	121	1.0mm	11 x 11	Full Array	4.2 ~ 8.9mm	QP-BGA121T1.0-11F
13mm	144	1.0mm	12 x 12	Full Array	5.4 ~ 10.1mm	QP-BGA144T1.0-12F
14mm	169	1.0mm	13 x 13	Full Array	7.4 ~ 12.1mm	QP-BGA169T1.0-13F
15mm	196	1.0mm	14 x 14	Full Array	4.3 ~ 8.9mm	QP-BGA196T1.0-14F
17mm	256	1.0mm	16 x 16	Full Array	5.6 ~ 10.2mm	QP-BGA256T1.0-16F
27mm	256	1.27mm	20 x 20	4-Row		QP-BGA256T1.27-20P4
35mm	352	1.27mm	26 x 26	4-Row		QP-BGA352T1.27-26P4

QP-BGA and QP-CSP Series

Quik-Pak® Open Cavity Package



Sealed Package after Die attach and Epoxy fill