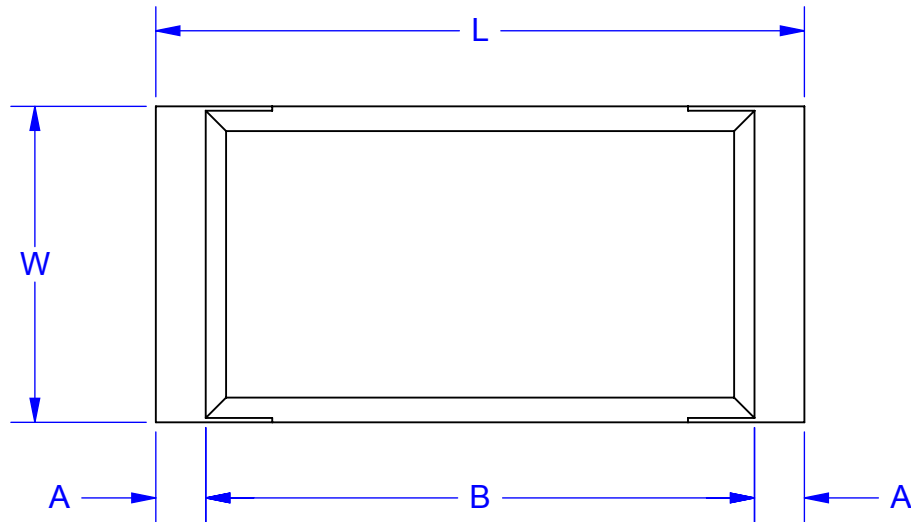


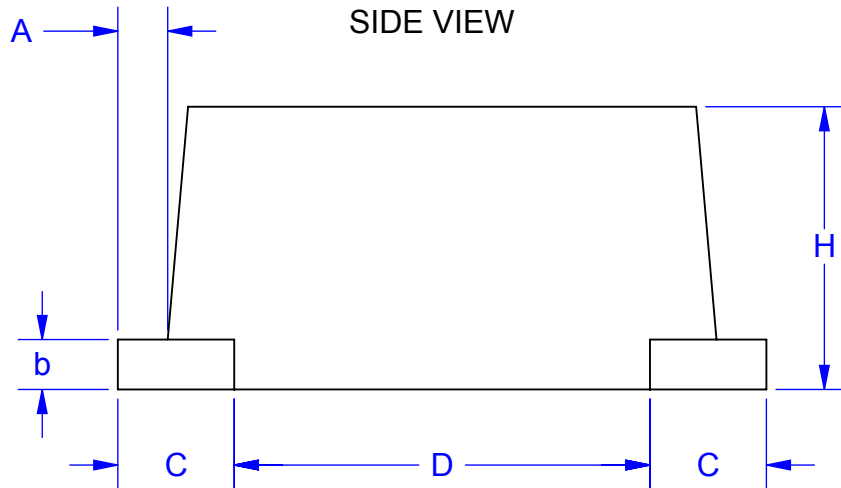
FLAT LEAD OUTLINE

TOP VIEW

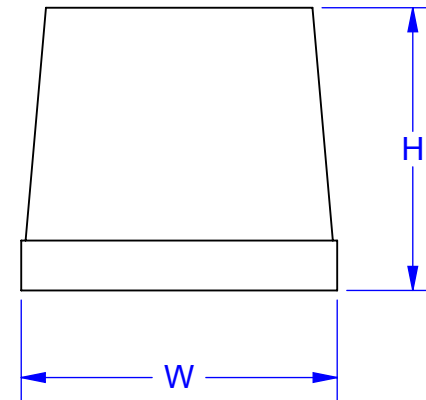


DIMENSION TABLE	
PART SERIES	SMA-F
CROSS REF	SOD106
JEDEC REF	DO-214AC
L	4.5 - 4.9
W	2.3 - 2.7
H	1.5 - 1.7
A	0.3 TYP
B	3.9 - 4.3
C	0.8 TYP
D	2.9 - 3.3
b	0.2
SPACER - REF	FM400N
JUMPER - REF	FM400S

SIDE VIEW




END VIEW

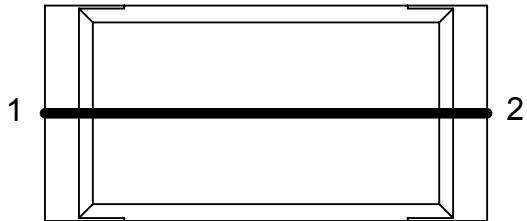


Notes: (Unless Otherwise Specified).

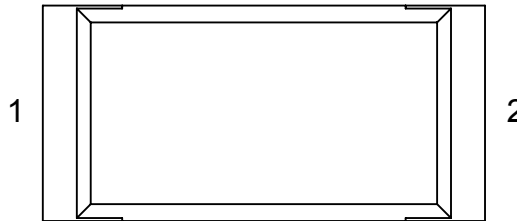
- 1) DIMENSIONS IN mm.
- 2) SEE JUMPER AND SPACER DIAGRAMS (PAGE 2).
- 3) SEE PART NUMBER CONFIGURATION (PAGE 4).
- 4) RECOMMENDED PC BOARD LAYOUT PATTERN (PAGE 6).
- 5) MOUNTING POSITION: ANY (NON-POLARIZED).
- 6) CASE: UL94-V RATED FLAME RETARDANT.

APPROVALS	DATE				
DRAWN T. Au	12/11/13				
ENG M. Hart	12/11/13	TITLE SMAF FLAT LEAD JUMPER AND SPACER			
MFG					
QA		SCALE 22:1	SIZE A	DRAWING NO. 121301	REV A
CUST		DO NOT SCALE DRAWING			SHEET 1 OF 7
REVISED					

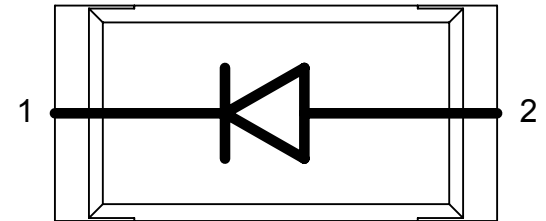
INTERNAL WIRING CIRCUIT
PART NUMBER SUFFIX
TOP VIEW



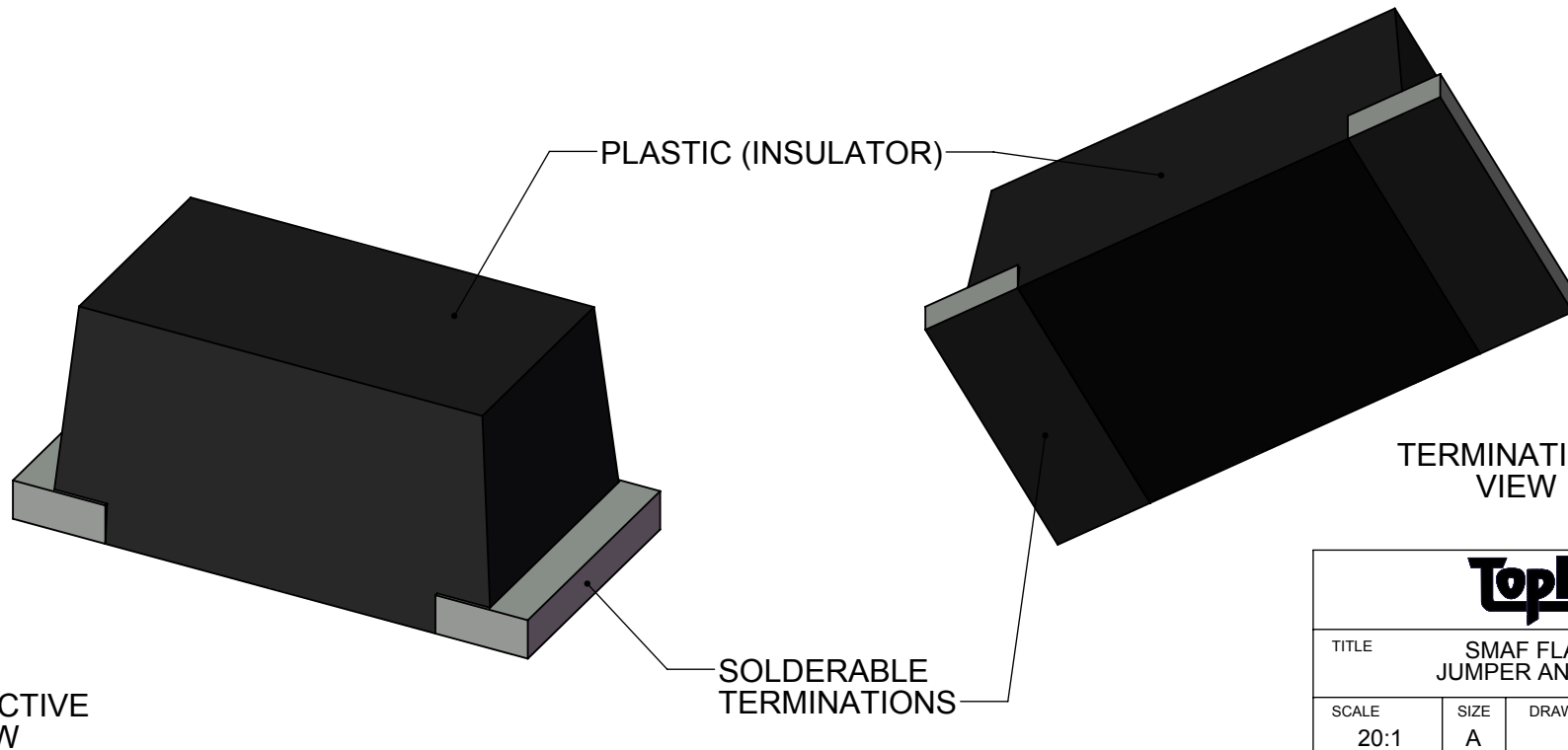
DC12
1-WIRE
CIRCUIT JUMPER



ISO
NO CONNECTION
FULLY ISOLATED
NON-CONDUCTIVE SPACER



BLANK SUFFIX
UNDEFINED CIRCUIT
DUMMY

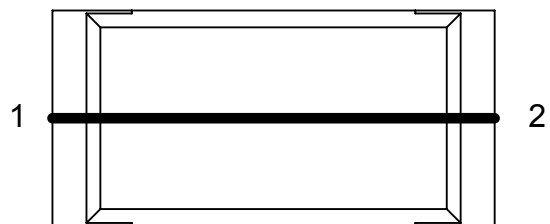


PERSPECTIVE
VIEW

TERMINATIONS
VIEW

TopLine®			
TITLE SMAF FLAT LEAD JUMPER AND SPACER			
SCALE 20:1	SIZE A	DRAWING NO. 121301	REV A
DO NOT SCALE DRAWING			SHEET 2 OF 7

SCHEMATIC EQUIVALENT INTERNAL CIRCUIT

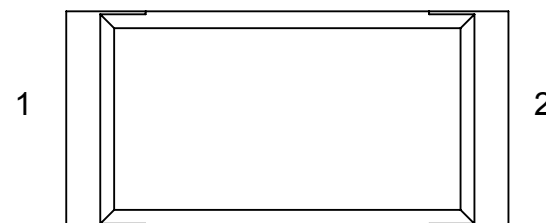


DC12
(SHORT CIRCUIT)



ELECTRICAL RESISTANCE MILIOHM (DC) MAX	
CIRCUIT	PIN 1 TO PIN 2
DC12	< 1.0 milli Ω

SCHEMATIC EQUIVALENT INTERNAL CIRCUIT



ISOLATED CIRCUIT
NO CONNECTIONS




INSULATION RESISTANCE GIGA OHM (DC) MIN	
CIRCUIT	PIN 1 TO PIN 2
ISO	> 10 G Ω

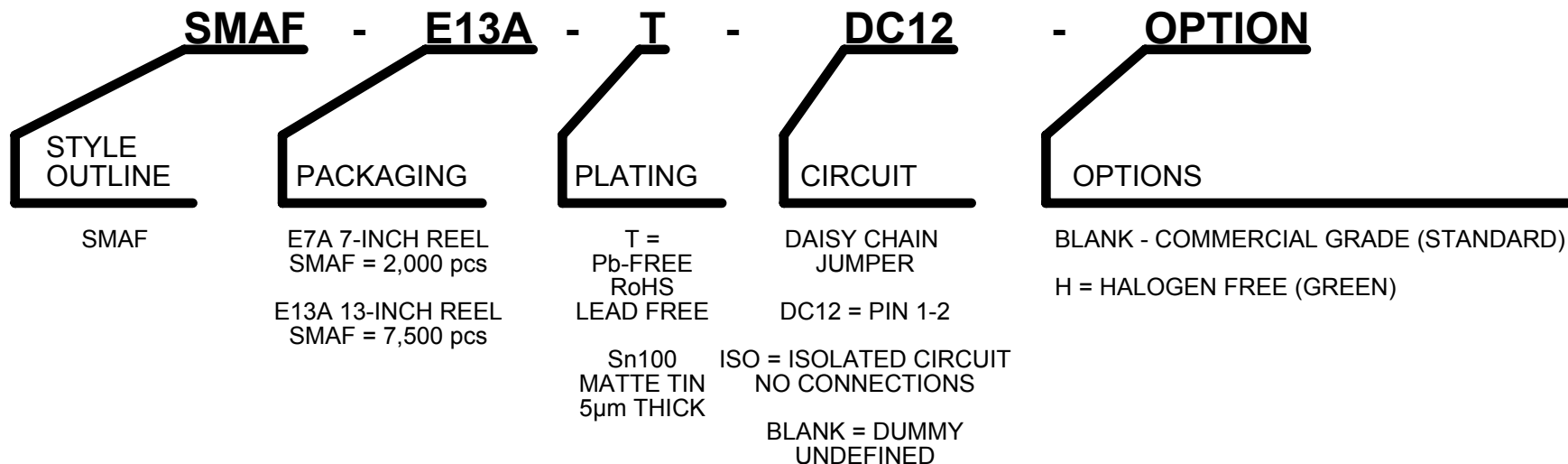
MAXIMUM ELECTRICAL (DC) RATING	PART TYPE
	SMA-F
V _R WORKING VOLTAGE	1000V
V _F FORWARD @ RATED CURRENT	< 0.2V
I _o FORWARD CURRENT	1.0 A
I _{FSM} FORWARD SURGE CURRENT	30 A
I _r REVERSE CURRENT	1.0 A
C _J JUNCTION CAPACITANCE	15 pF

THERMAL RESISTANCE	PART TYPE
	SMA-F
JUNCTION TO AMBIENT (T _a =25°) R _{th(j-a)}	50 °C/W

TEMPERATURE RATING	
JUNCTION TEMP T _J	150 °C
STORAGE TEMP T _{stg}	-65 °C TO 150 °C
PEAK REFLOW TEMP T _{reflow} 10 SECONDS	260 °C

			
TITLE SMAF FLAT LEAD JUMPER AND SPACER			
SCALE 15:1	SIZE A	DRAWING NO. 121301	REV A
DO NOT SCALE DRAWING			SHEET 3 OF 7

PART NUMBERING SYSTEM



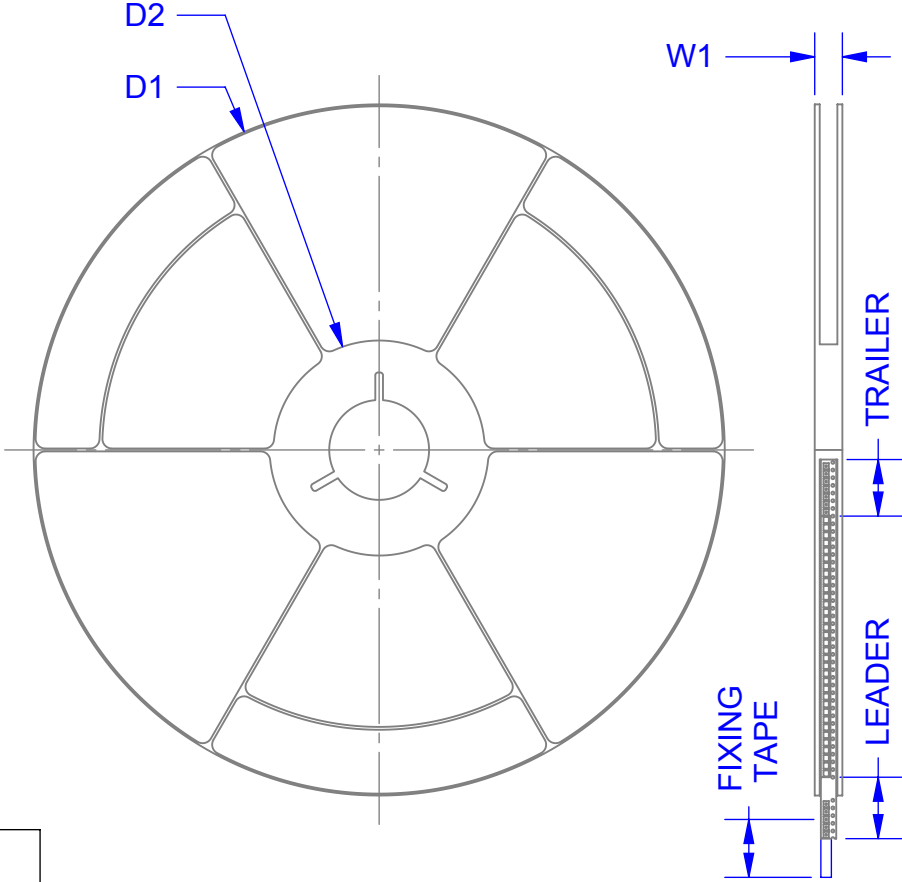
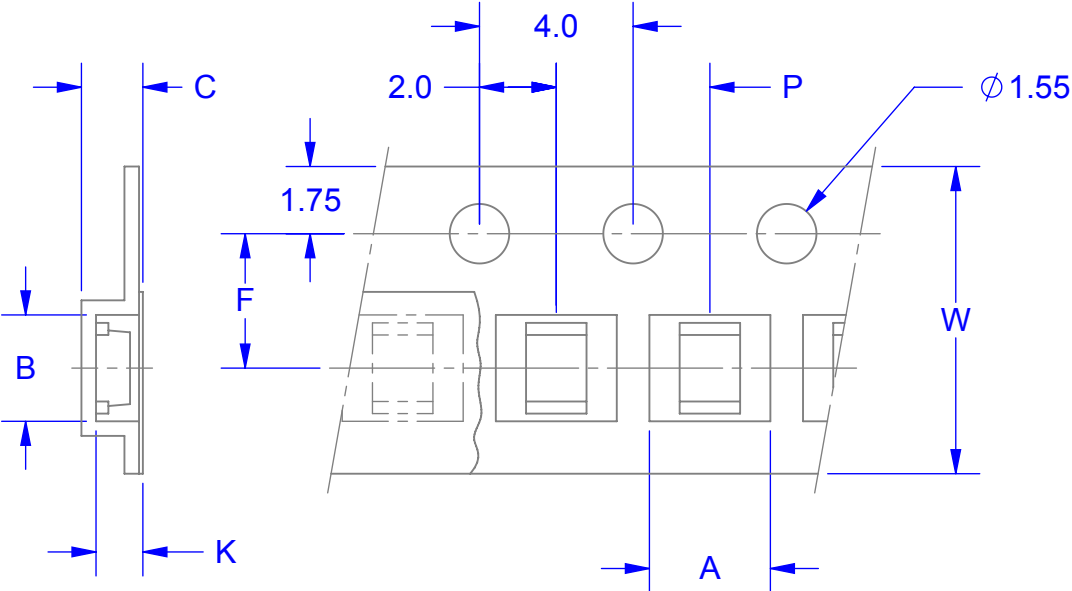
OUTLINE	REEL QTY	NOTES	RoHS	MSL LEVEL	HALOGEN FREE	APPLICATION	TOP MARK	REF	DP#
SMAF-E7A-T-DC12	2000	SHORTED	YES	1	NO	JUMPER	SC	FM400S	161001
SMAF-E13A-T-DC12	7500	SHORTED	YES	1	NO	JUMPER	SC	FM400S	167084
SMAF-E7A-T-ISO	2000	OPEN CIRCUIT	YES	1	NO	SPACER	NC	FM400N	173077
SMAF-E13A-T-ISO	7500	OPEN CIRCUIT	YES	1	NO	SPACER	NC	FM400N	172043

OPTIONAL: HALOGEN FREE AVAILABLE (ADD SUFFIX "H").

TopLine®			
TITLE SMAF FLAT LEAD JUMPER AND SPACER			
SCALE 25:1	SIZE A	DRAWING NO. 121301	REV A
DO NOT SCALE DRAWING			SHEET 4 OF 7

TAPE SPECIFICATION
SURFACE MOUNT DEVICE

7 AND 13 INCH PACKAGE REEL



DIRECTION OF UNREELING →

PARTS ARE NON-POLARIZED

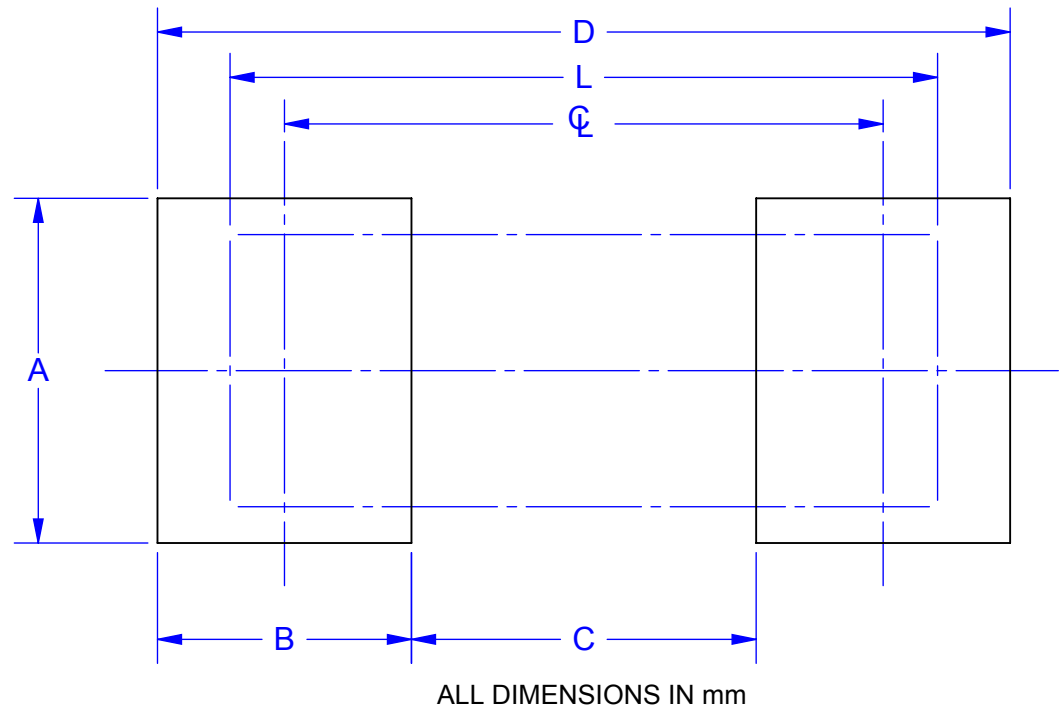
TAPE AND REEL DIMENSIONS		E7A 7-INCH	E13A 13-INCH
	SYMBOL	SMAF	SMAF
TAPE WIDTH	W	12	12
PITCH OF COMPONENTS	P	4	4
POCKET WIDTH	A	2.8	2.8
POCKET LENGTH	B	5.0	5.0
POCKET DEPTH	K	1.90	1.90
CARRIER THICKNESS	C	2.1	2.1
REEL DIAMETER	D1	178	330
HUB DIAMETER	D2	50	50
PUNCH HOLE POSITION	F	5.5	5.5
MAX REEL WIDTH	W1	18	18
REF (JUMPER)	-	FM400S	FM400S
REF (SPACER)	-	FM400N	FM400N
QUANTITY (PSC)	-	2000	7500

ALL DIMENSIONS IN mm.

TopLine®			
TITLE		SMAF FLAT LEAD JUMPER AND SPACER	
SCALE	SIZE	DRAWING NO.	REV
1:1	A	121301	A
DO NOT SCALE DRAWING			SHEET 5 OF 7

PC BOARD LAND PATTERN

PCB PAD DIMENSIONS	
SYMBOL	SMAF
A	2.8
B	1.6
C	2.2
D	5.4
ϕ	3.8
L	4.5 - 4.9
REF JUMPER	FM400S
REF SPACER	FM400N



Notes: (Unless Otherwise Specified).

1) DIMENSIONS IN mm.

2) PCB BOARD DIMENSIONS ARE PRESENTED ONLY AS A GUIDELINE.
DESIGNERS SHOULD USE THEIR OWN EXPERIENCE WHEN DESIGNING PCB.

TopLine[®]

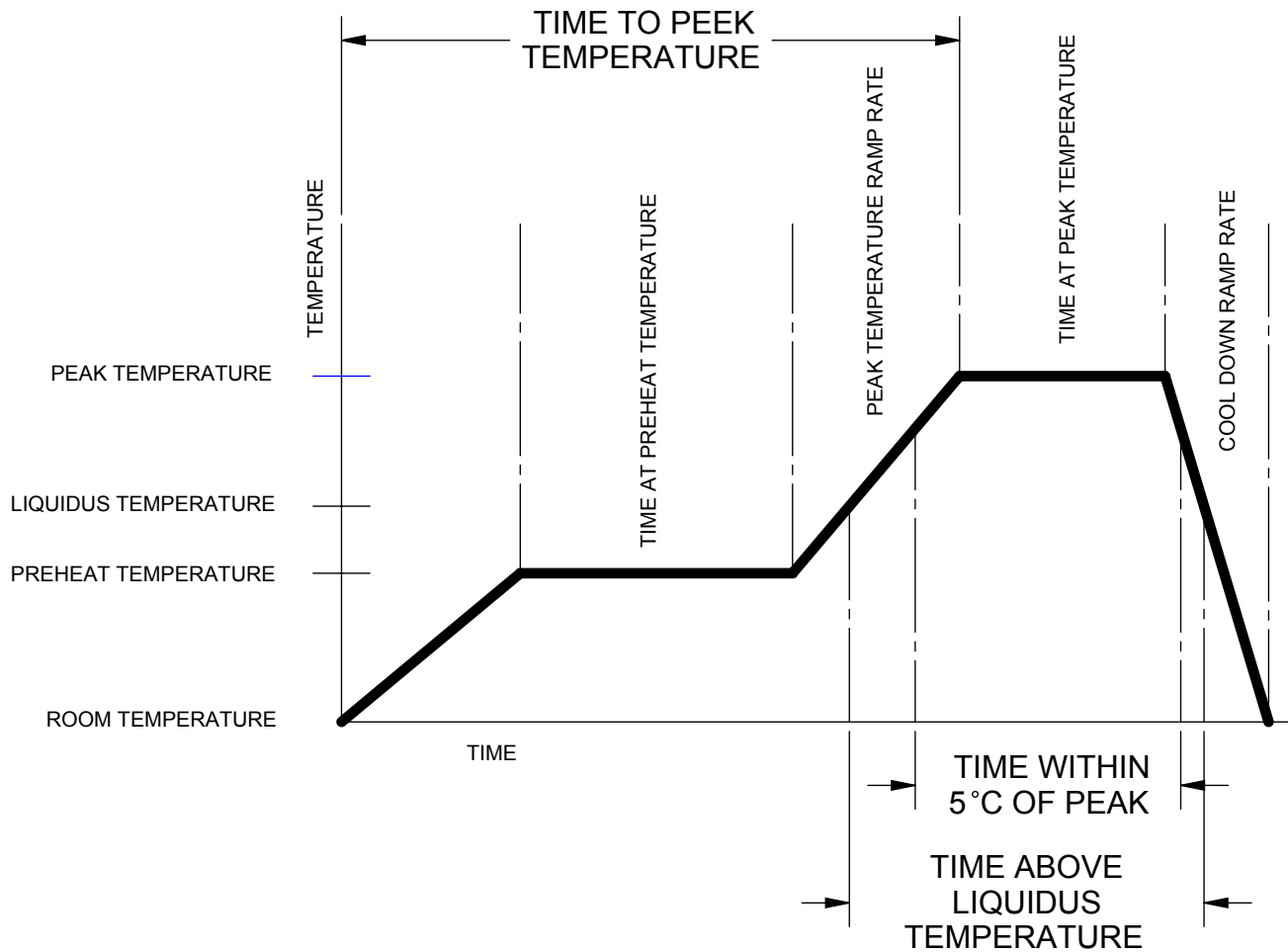
TITLE SMAF FLAT LEAD
JUMPER AND SPACER

SCALE 24:1	SIZE A	DRAWING NO. 121301	REV A
---------------	-----------	-----------------------	----------

DO NOT SCALE DRAWING

SHEET 6 OF 7

LEAD FREE REFLOW PROFILE OF SMD PACKAGE



DESCRIPTION	REQUIREMENT
AVERAGE PREHEAT RAMP RATE	3°C /SECOND MAXIMUM
PREHEAT TEMPERATURE	150°C MINIMUM, 200°C MAXIMUM
PREHEAT TIME	60 TO 120 SECONDS
RAMP TO PEAK	3°C /SECOND MAXIMUM
TIME OVER LIQUIDUS (217°C)	60 TO 260 SECONDS
PEAK TEMPERATURE	260°C +0/-5°C
TIME WITHING 5°C OF PEAK	10 TO 30 SECONDS
RAMP - COOL DOWN	6°C /SECONDS MAXIMUM
TIME 25°C TO PEAK	6 MINUTES MAXIMUM

TopLine®			
TITLE		SMAF FLAT LEAD JUMPER AND SPACER	
SCALE	SIZE	DRAWING NO.	REV
1:1	A	121301	A
DO NOT SCALE DRAWING			SHEET 7 OF 7