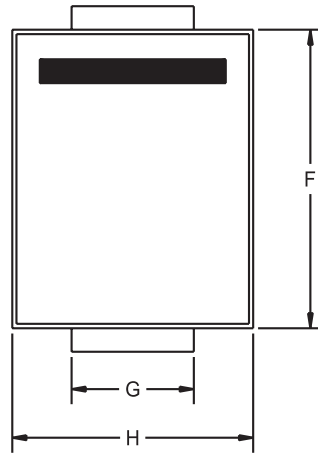
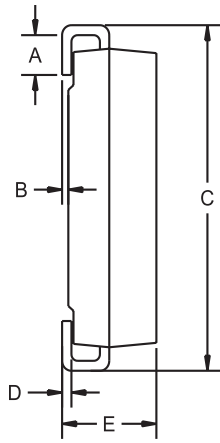


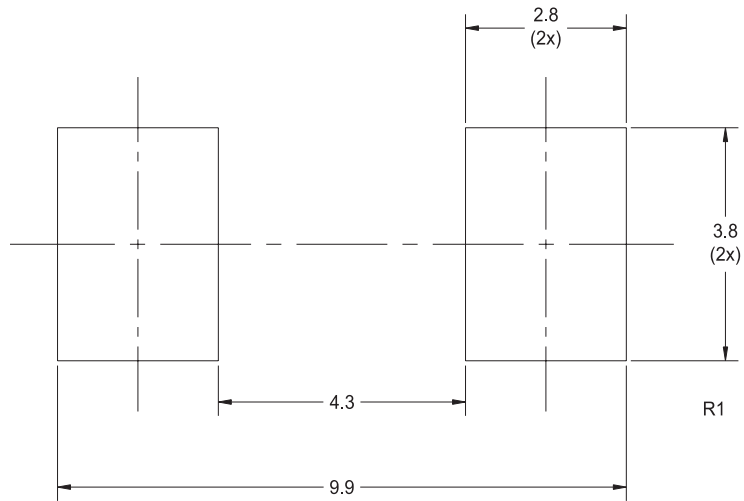
TopLine

SOD15 - DO214AB SMCJ Outline



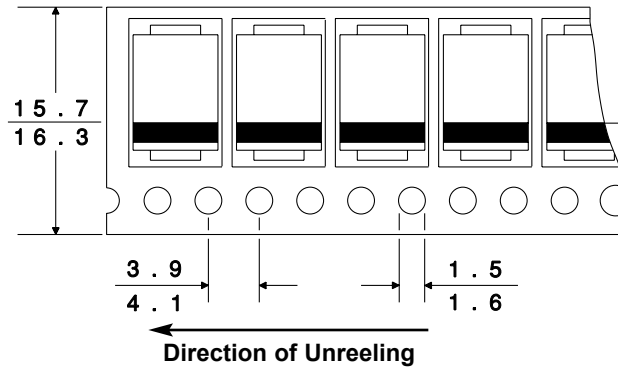
SYMBOL	INCHES		MILLIMETERS	
	MIN	MAX	MIN	MAX
A	0.030	0.060	0.76	1.52
B	0.004	0.008	0.10	0.20
C	0.305	0.320	7.75	8.13
D	0.006	0.012	0.15	0.31
E	0.079	0.103	2.00	2.62
F	0.260	0.280	6.60	7.11
G	0.108	0.124	2.75	3.15
H	0.220	0.245	5.59	6.22

Mounting Pad Geometry (Dimensions in mm)



Tape Dimensions and Orientation (Dimensions in mm.)

Tape Width: 16mm



Material Composition Specification

SMC Case

Available with Pb(lead)-free plating*



Device average mass 210 mg
Fluctuation margin +/-10%

Device part	Substance	mass (mg)
active device	doped Si	3.20
leadframe	Cu Alloy	61.3
die attach	Pb92.5 Ag2.5 Sn5	3.65
*plating	SnPb10	19.8
	or Sn (100% tin, Pb-free)	19.8
encapsulation	epoxy molding compound -silica 70% -epoxy 20% -phenol resin 10% -Sb ₂ O ₃ <1.0%	122
Packing material (per 13" reel)		(g)
reel	polystyrene	239
carrier tape	polycarbonate	142
cover tape	polyester	20
box	cardboard	272
bubble wrap	polyethylene, ethoxylated fatty amine	34
label/tape	paper	22

*Specify Lead-free when ordering 100% tin (Pb-free) plating option.