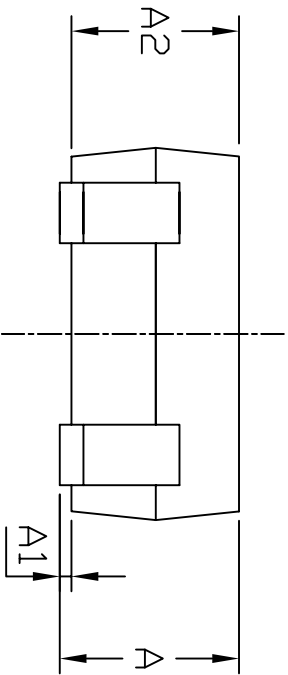


SYMBOL	MIN	MAX
E	1.15	1.35
D	1.85	2.25
HE	1.80	2.40
A	0.80	1.10
A2	0.80	1.00
A1	0.00	0.10
e	0.65 BSC	
b	0.25	0.40
c	0.10	0.18
L	0.26	0.46



- NOTE:
1. ALL DIMENSIONS ARE IN MILLIMETERS.
 2. DIMENSIONS ARE INCLUSIVE OF PLATING.
 3. DIMENSIONS ARE EXCLUSIVE OF MOLD FLASH & GATE BURR.
 4. DIE IS FACING UP FOR MOLD AND FACING DOWN FOR TRIM/FORM. ie :REVERSE TRIM/FORM.
 5. PACKAGE SURFACE TO BE MIRROR FINISH.
 6. FOOT LENGTH MEASURING BASED ON GAUGE PLANE METHOD.

E	Note:METAL BURR REVISE TO GATE BURR AS PER JEDEC SPEC.	02/01/02	ANDREW	PT
D	CHANGED FOOT LENGTH TO 0.26-0.48MM(WAS 0.1-0.3) BASED ON GAUGE PLANE METHOD AND REMOVED Q1 DIMENSION.	25/07/00	ANDREW	PT
C	CHANGED FORMING PROFILE	06/09/99	ANDREW	PT
B	ADD NOTE NO.5 & 6.	30/04/99	ANDREW	PT
A	CHANGED PKG LENGTH TO 1.86-2.26(WAS 1.80-2.20).	08/01/99	ANDREW	PT
0	ORIGINAL DRAWING.	13/04/98	ANDREW	PT
REV.	DESCRIPTION	DATE	BY	APPD

TOLERANCES REFER TO THE SPECIFICATION ABOVE.

UNIT:	SCALE:
MM	NTS

SYMBOL

DWN:	ANDREW	DATE:	02/01/02
APPD:	CH TAN	DATE:	
APPD:	CK TANG	DATE:	
APPD:	CW CHAI	DATE:	
APPD:	SRI	DATE:	
DWG. NO:	SC703-POC-001	REV.:	E



U

AVSIA

SC70 3L
Package Case Outline