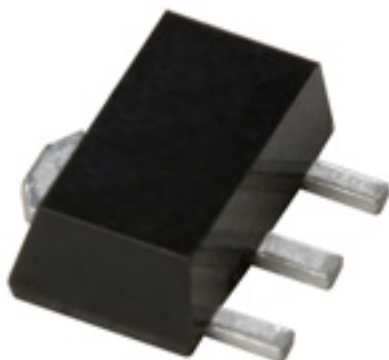




Contact Us:
 Tel: 1-800-776-9888
sales@TopLine.tv
www.TopLine.tv

TO243 - SOT89
JEDEC TO-243AA Package
TopLine Dummy Component
For training, practice and evaluation



Quick Specs:
 Pin Count 3L
 Pitch 1.9mm
 Body 2.50 x 4.5mm
 Small Outline Transistor/Diode

Use and Applications:
 IPC Solder Training & Practice
 Equipment Evaluation
 Prototype PWB

Availability:
 Delivery Stock to 4 weeks

[See Page 2 Outline Drawing](#)

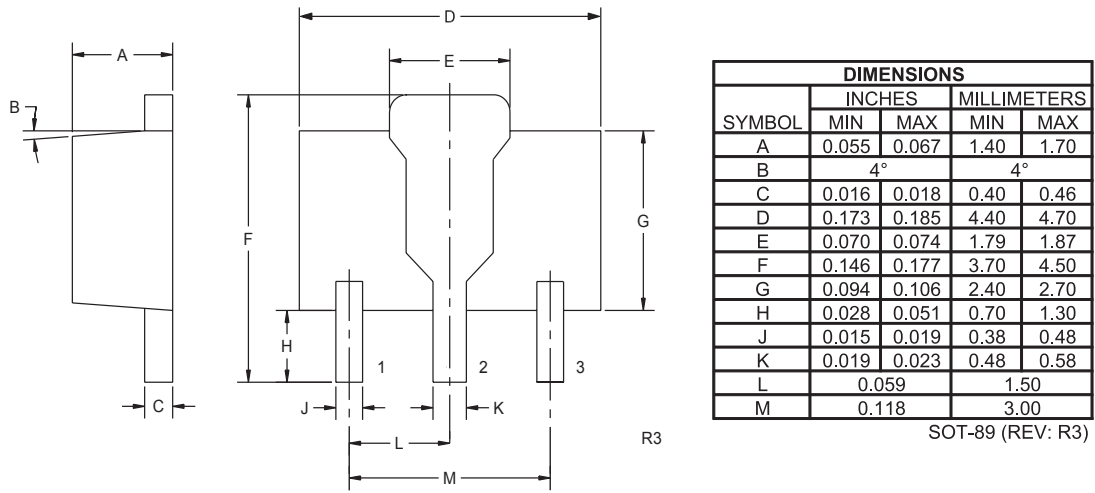
Part Numbers:
 SOT89
 TO243AA

Part Numbering System					
SOT89	E7A		T	-	Option
JEDEC Series	Packaging		Plating	-	Daisy Chain
TO243AA Plastic Small Outline Transistor Diode	E7A = 7" Reel 1000pcs E4A = 4" Reel 100pcs B = Bulk		T = Sn100 RoHS Pb-Free Blank = SnPb		Blank = None DC123 DC124 ISO = Isolated

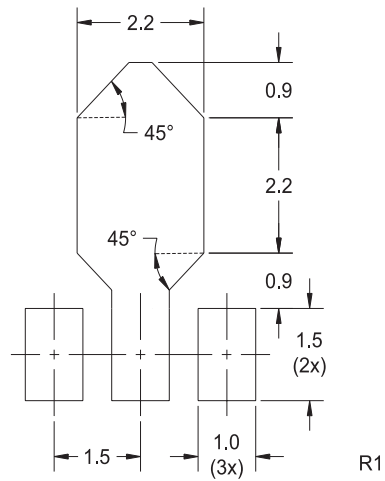
Options: Add Daisy Chain Drawing Number: DC124 or DC123 (Standard)

SOT89 TO-243AA

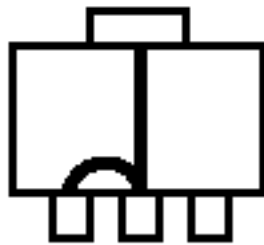
Mechanical Drawing



PC Board Mounting Pad (Dimensions in mm)



SOT89
JEDEC TO-243AA Package
TopLine Dummy Component
For training, practice and evaluation



DC124



DC123

Top View of Internal Daisy Chain Option.
Zero Ohm Jumper

TopLine Corporation
95 Highway 22 W
Milledgeville, GA 31061, USA
Toll Free USA/Canada (800) 776-9888
International: 1-478-451-5000 • Fax: 1-478-451-3000
Email: sales@topline.tv
www.topline.tv