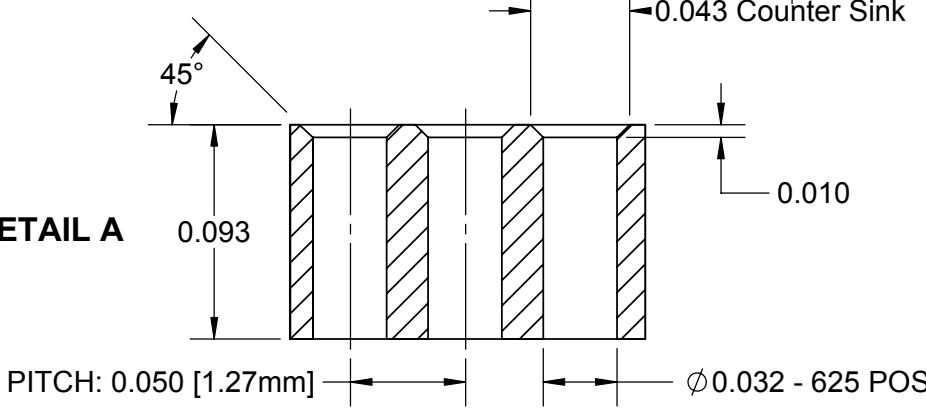
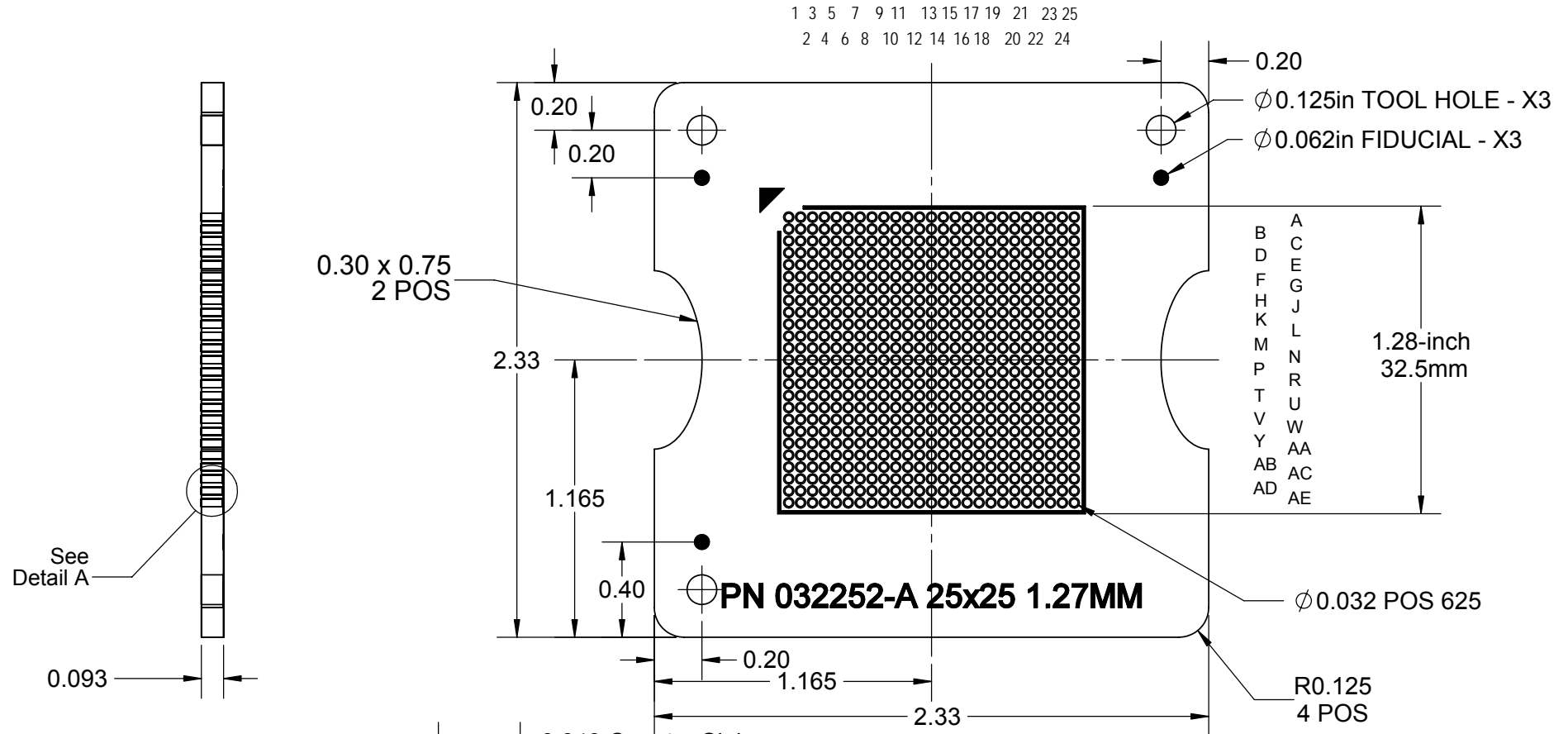


SIDE VIEW

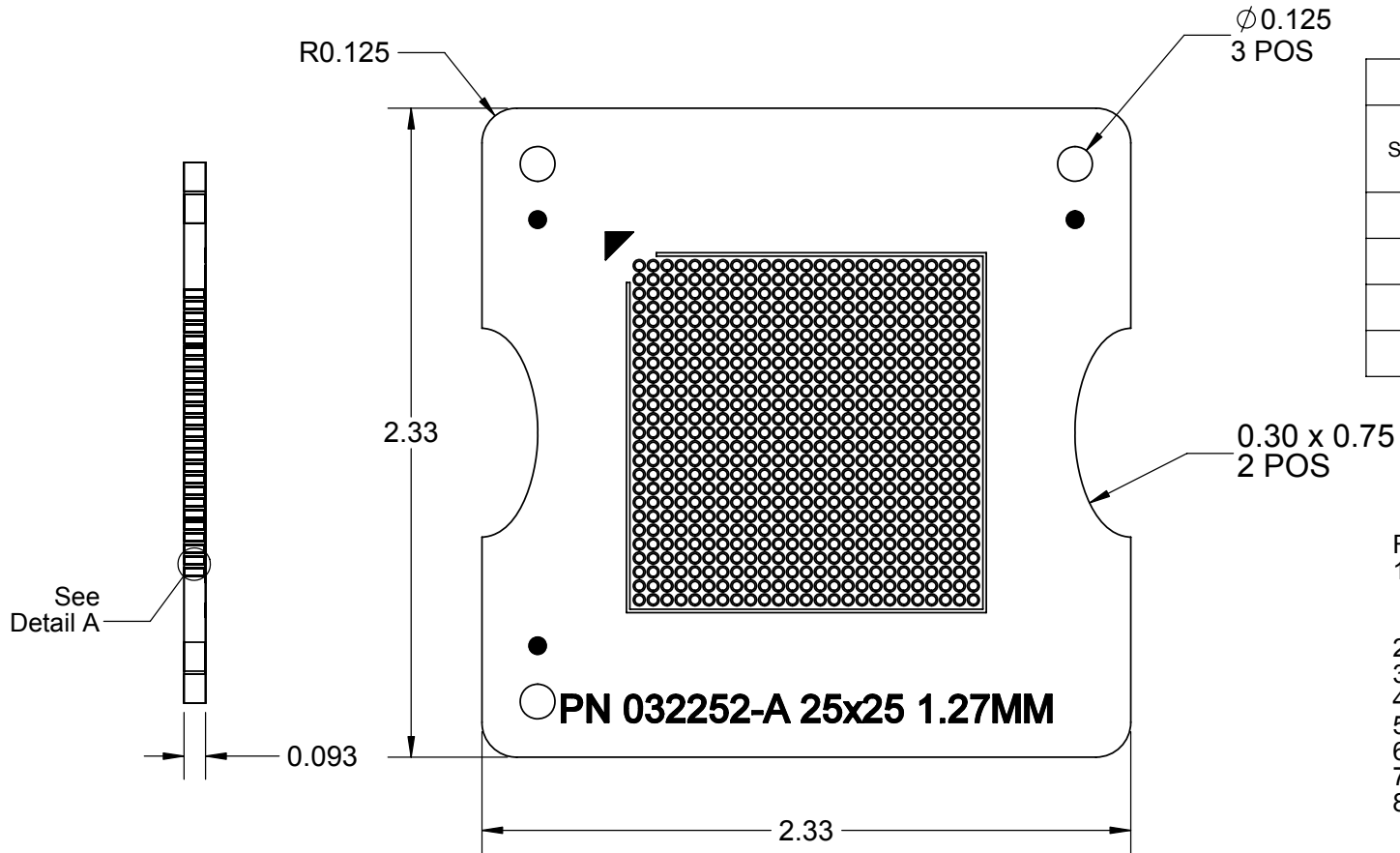
TOP VIEW



- NOTES:**
1. DIMENSIONS IN INCH UNLESS OTHERWISE STATED.
 2. MATERIAL: FR4 COLOR BLACK.
 3. LEGEND: WHITE INK.
 4. PIN REFERENCE DESIGNATORS NOT MARKED ON PCB

APPROVALS	DATE	TopLine®			
DRAWN T. Au	7/25/2015				
ENG M. Hart	7/25/2015	TITLE CCGA624 TRAY INSERT 2.33" SQ			
MFG		SCALE 3:2	SIZE A	DRAWING NO. 032252	REV A
QA					
CUST		DO NOT SCALE DRAWING			SHEET 1 OF 3
REVISED					

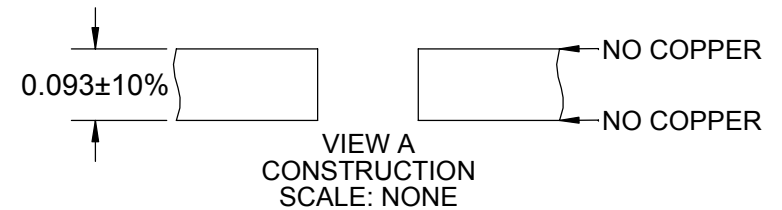
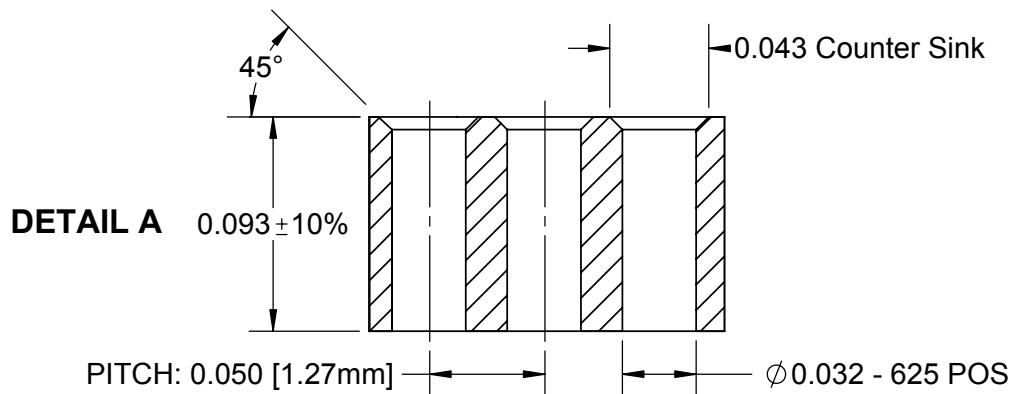
FAB DRILL AND PLATED THROUGH HOLES




HOLE CHART			
SYMBOL	DIAMETER UNPLATED THRU	COUNTER SINK	QTY PCB
+	0.032 ± 0.003	-	625
○	-	0.043 ± 0.003	625
○	$\phi 0.125$		3
TOTAL			1253

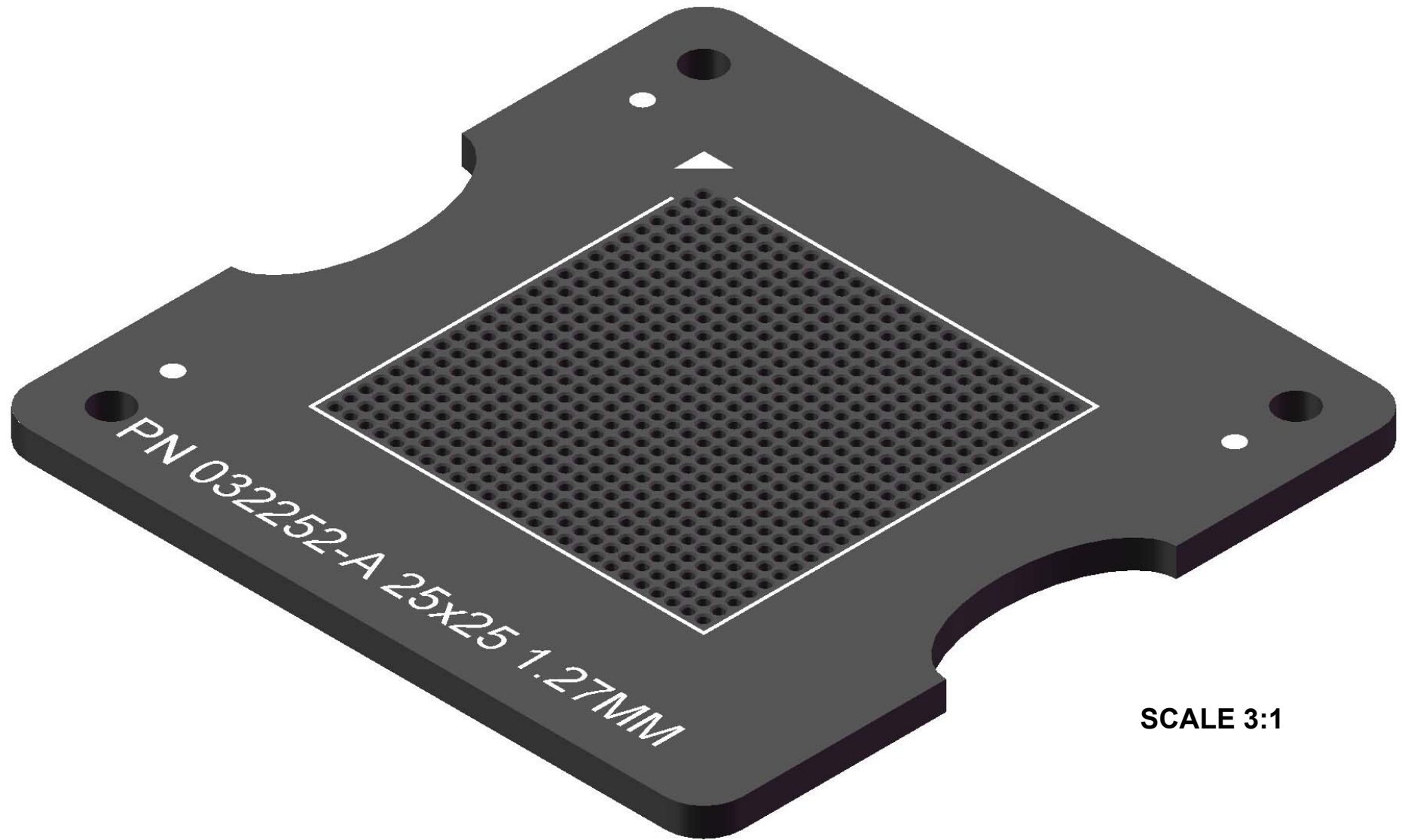
FAB NOTES:

- MATERIAL:
 A. NO COPPER (0/0).
 B. G10 BLACK COLOR.
- REFER TO DETAIL A COUNTER SINK.
- REFER TO VIEW A FOR STACK UP.
- NO PTH HOLES.
- NO SOLDER MASK.
- NO PCB MFRG LOGO ALLOWED.
- SILKSCREEN WHITE INK.
- FULLY ROUTE EACH BOARD.



			
TITLE CCGA624 TRAY INSERT 2.33" SQ			
SCALE 1.25:1	SIZE A	DRAWING NO. 032252	REV A
DO NOT SCALE DRAWING		SHEET 2 OF 3	

MODEL



SCALE 3:1

TopLine[®]			
TITLE		CCGA624 TRAY INSERT 2.33" SQ	
SCALE	SIZE	DRAWING NO.	REV
3:1	A	032252	A
DO NOT SCALE DRAWING			SHEET 3 OF 3