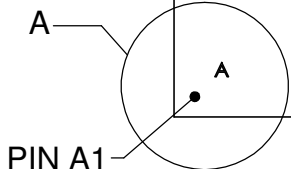
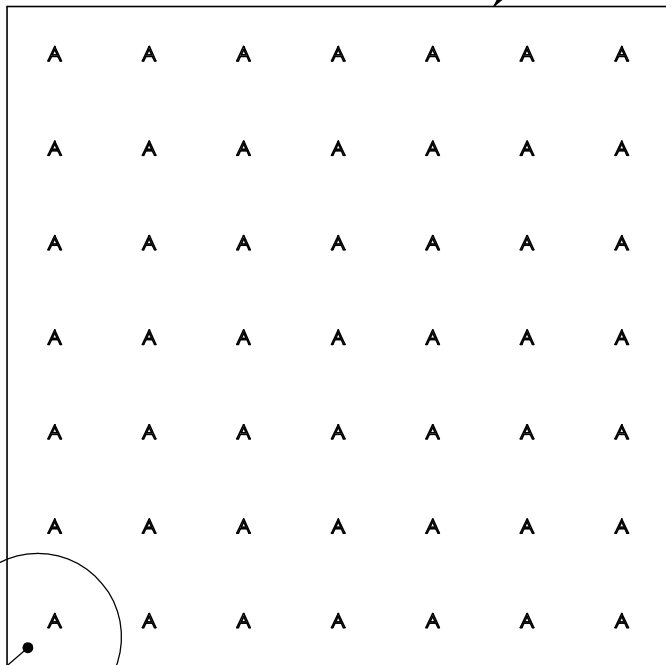


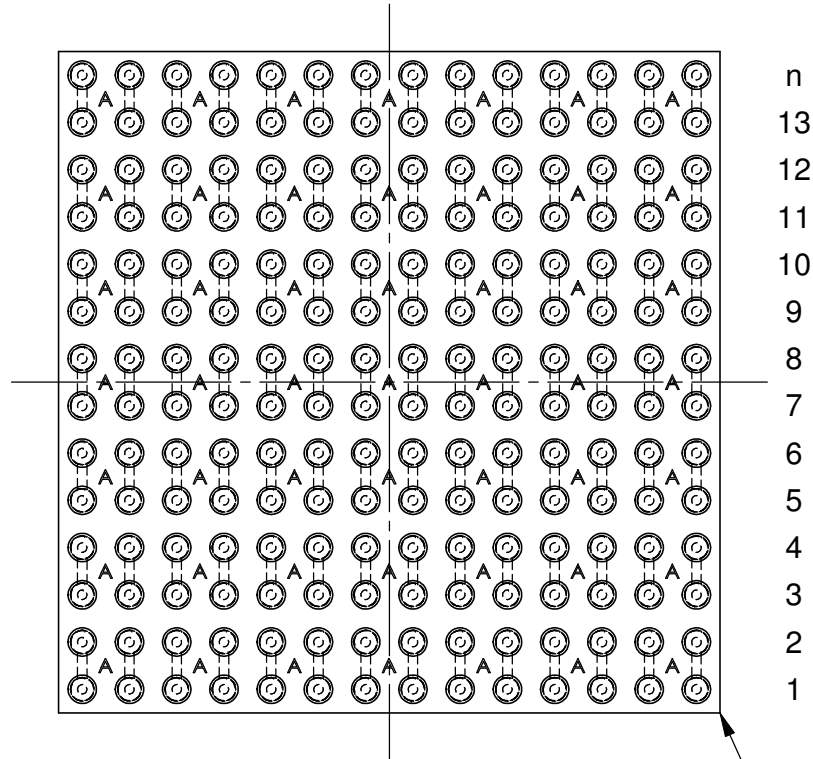
TOP VIEW

SILICON (Si)

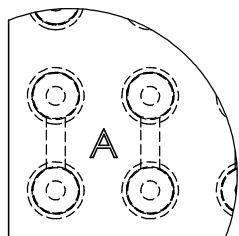


BALL VIEW

Z N M L K J H G F E D C B A



PIN A1



DAISY CHAIN ORIENTATION


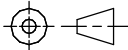
DETAIL A
SCALE 25 : 1

MARKING CODE	
PITCH	*LETTER
0.3mm	A
0.4mm	A OR F
0.5mm	A OR P

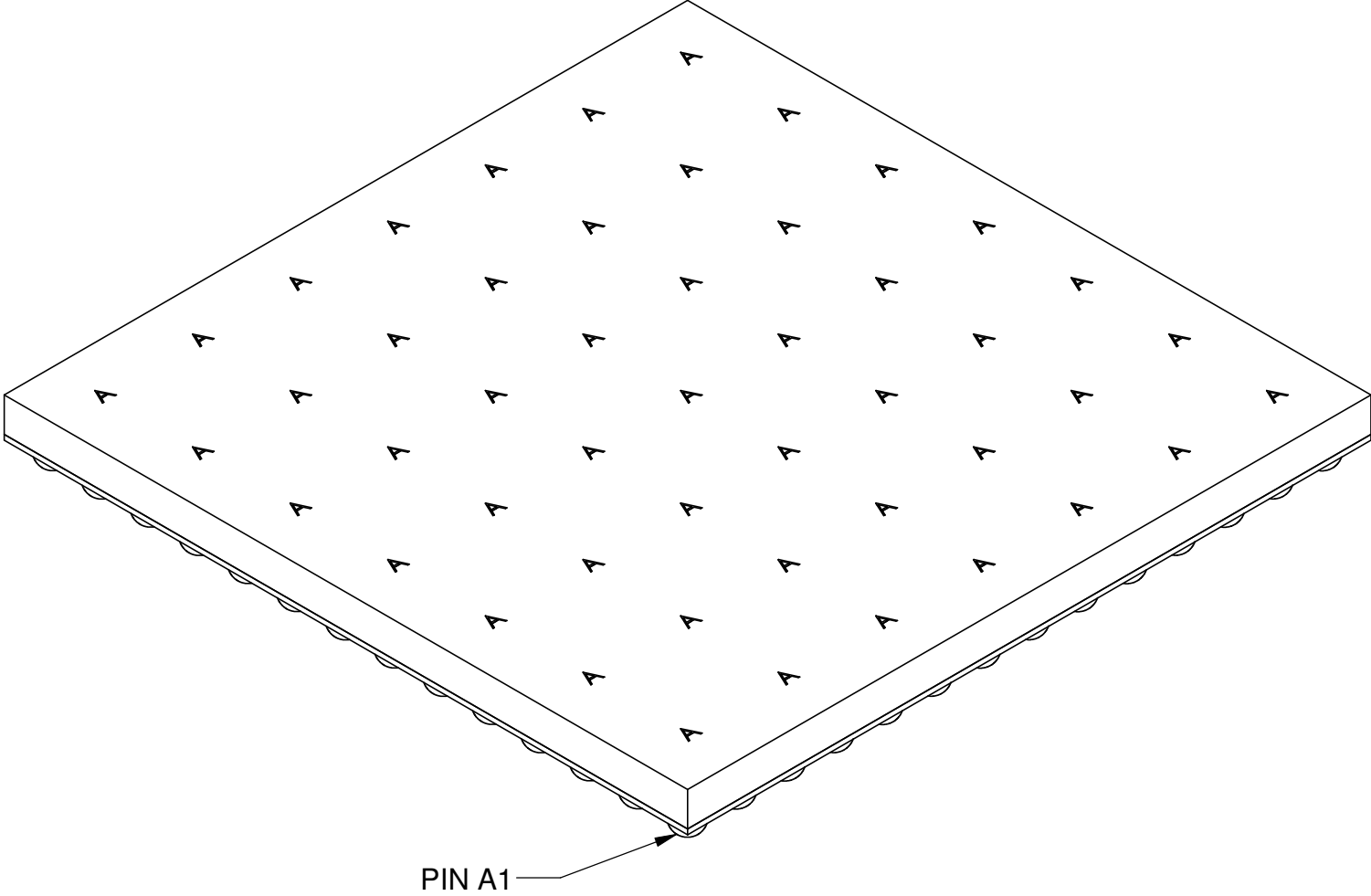
*SUBJECT TO CHANGE

Notes: (Unless Otherwise Specified).

- 1) EXAMPLE OF TOP SIDE LASER MARKING.
- 2) ORIENT LETTERS FOR LOCATION OF PIN A1 CORNER.
- 3) ALLOWABLE LETTER MARKING: A, F, T, M, L, Y, AND P.
- 4) SINGLE LETTER IS REPEATED MULTIPLE TIMES ACROSS TOP SIDE.
- 5) DAISY CHAIN IS HIDDEN UNDER RESIN ON BALL SIZE.
- 6) TOP SIDE DOES NOT HAVE A DOT FOR LOCATION OF PIN A1.
- 7) LETTERS ARE NOT MARKED ON BOTTOM (BALL) SIDE.

TOLERANCE UNLESS NOTED		APPROVALS		DATE				
X.X	+/- 0.3	DRAWN	J. Hines	12/27/2010				
X.XX	+/- 0.03							
X.XXX	+/- 0.003	ENG			SCALE	SIZE	DRAWING NO.	REV
ANGLES +/- 0.5° ALL DIMENSIONS IN <input type="checkbox"/> INCHES <input checked="" type="checkbox"/> MILLIMETERS		MFG			12.5:1	A	504012	A
THIRD ANGLE PROJECTION 		QA			DO NOT SCALE DRAWING			SHEET 1 OF 3
		CUST						
		REVISED						

EXAMPLE OF WLP MARKING
PIN 1 ORIENTATION

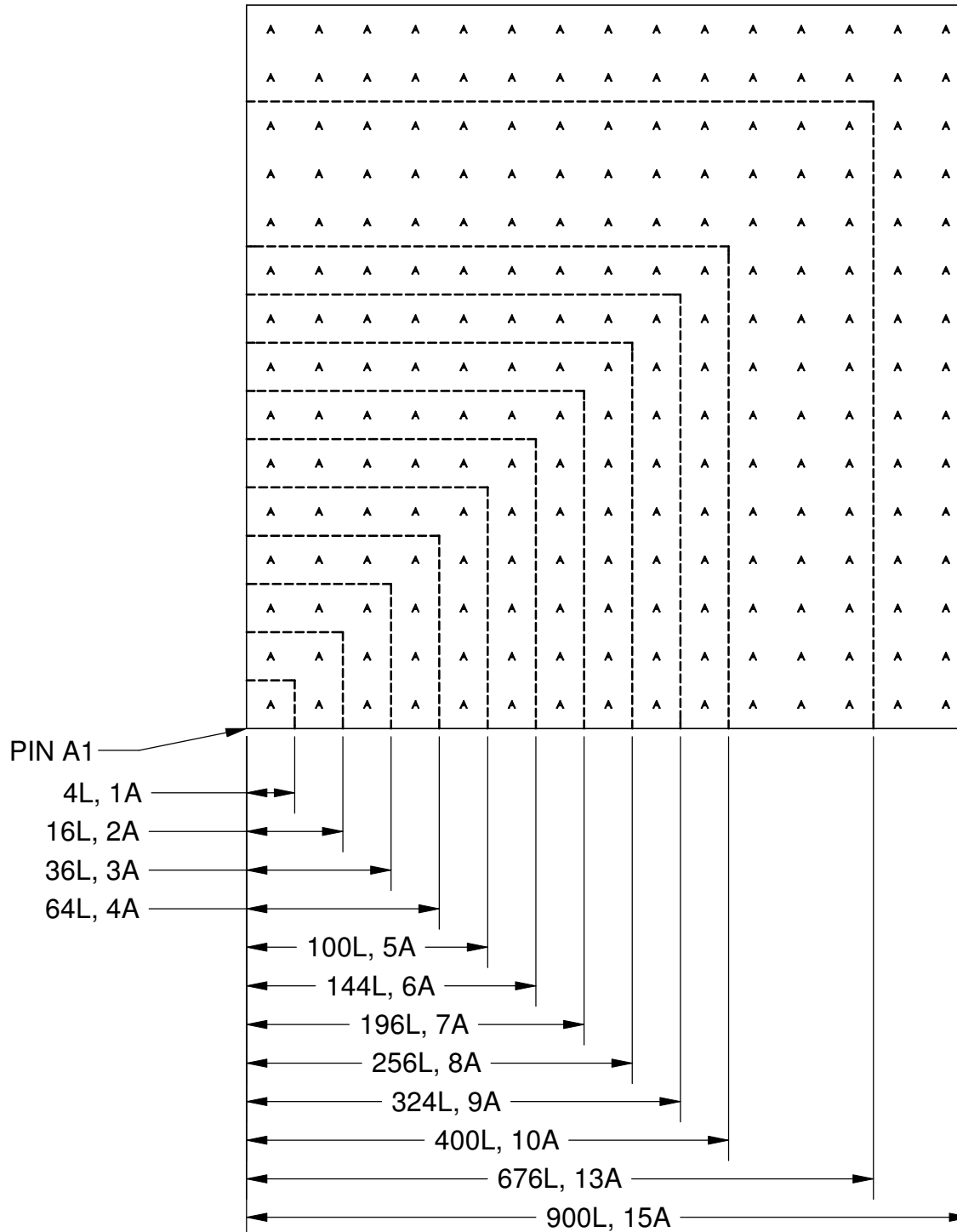


WLP IS LASER MARKED WITH A SINGLE LETTER REPEATED
ACROSS THE TOP SURFACE.

TO LOCATE PIN A1, ORIENT THE MARKINGS AS SHOWN.
A1 IS LOCATED IN THE LOWER LEFT CORNER.

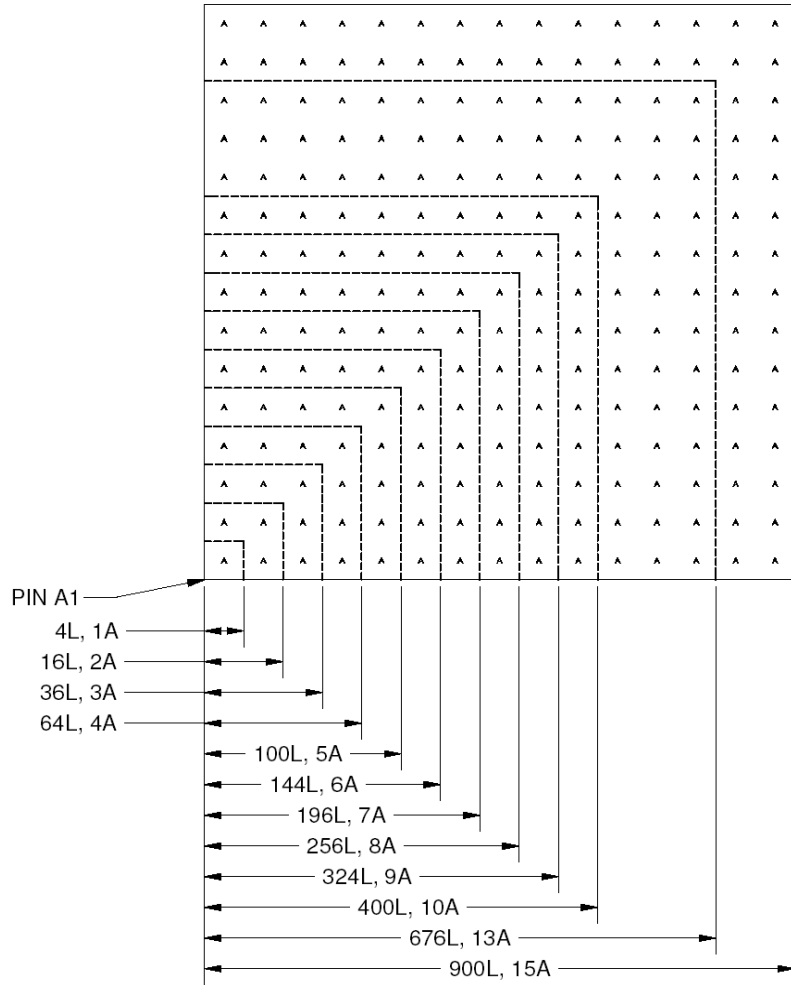
TopLine ®			
TITLE		WLP TOP MARKING PIN A1 LOCATIONS	
SCALE	SIZE	DRAWING NO.	REV
20:1	A	504012	A
DO NOT SCALE DRAWING			SHEET 2 OF 3

WLP TOP MARKING EXAMPLE



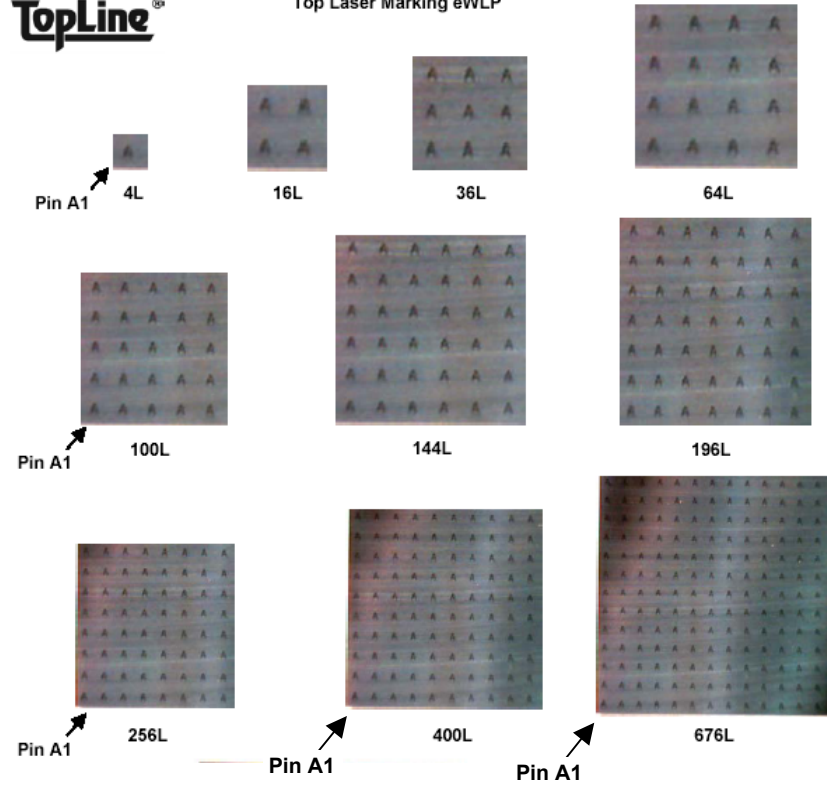
TopLine ®			
TITLE		WLP TOP MARKING PIN A1 LOCATIONS	
SCALE	SIZE	DRAWING NO.	REV
7.5:1	A	504012	A
DO NOT SCALE DRAWING			SHEET 3 OF 3

WLP TOP MARKING EXAMPLE



TopLine[®]

Top Laser Marking eWLP



TopLine [®]			
TITLE WLP TOP MARKING PIN A1 LOCATIONS			
SCALE 7.5:1	SIZE A	DRAWING NO. 504012	REV A
DO NOT SCALE DRAWING		SHEET 3 OF 3	