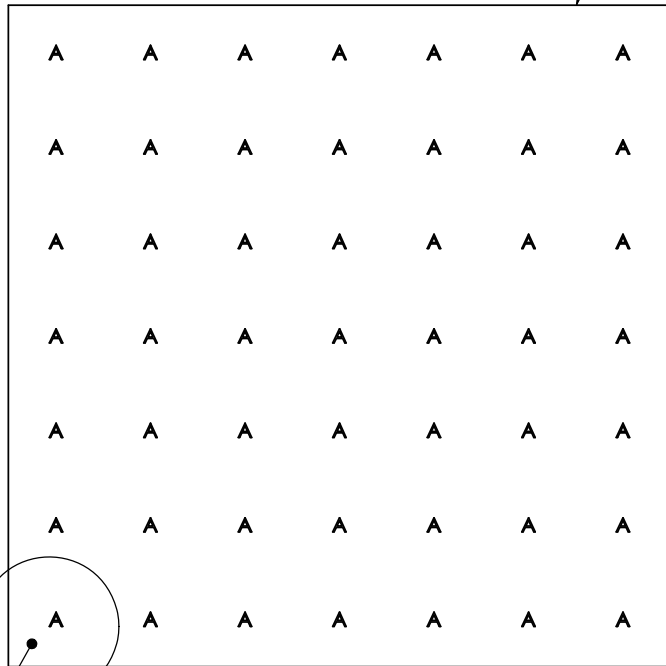


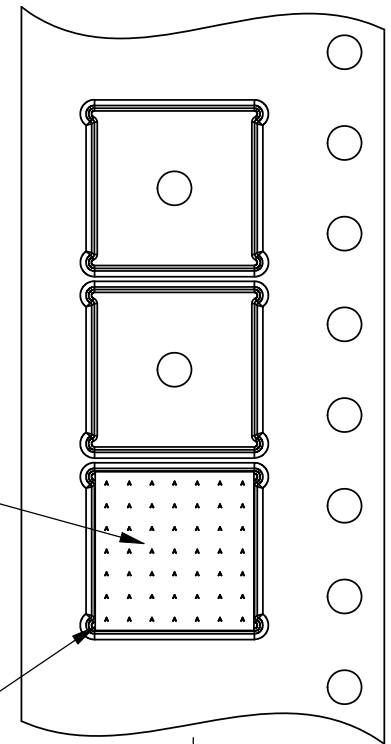
TOP VIEW

SILICON (Si)



EXAMPLE ORIENTATION OF MARKINGS ON WLP

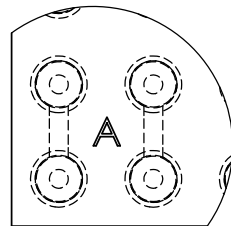
PIN 1
A



DIRECTION OF FEED

Notes: (Unless Otherwise Specified).

- 1) EXAMPLE OF TOP SIDE LASER MARKING.
- 2) ORIENT LETTERS FOR LOCATION OF PIN A1 CORNER.
- 3) ALLOWABLE LETTER MARKING: A, F, T, M, L, Y, AND P.
- 4) SINGLE LETTER IS REPEATED MULTIPLE TIMES ACROSS TOP SIDE.
- 5) DAISY CHAIN IS HIDDEN UNDER RESIN ON BALL SIZE.
- 6) TOP SIDE DOES NOT HAVE A DOT FOR LOCATION OF PIN A1.
- 7) LETTERS ARE NOT MARKED ON BOTTOM (BALL) SIDE.



DAISY CHAIN ORIENTATION

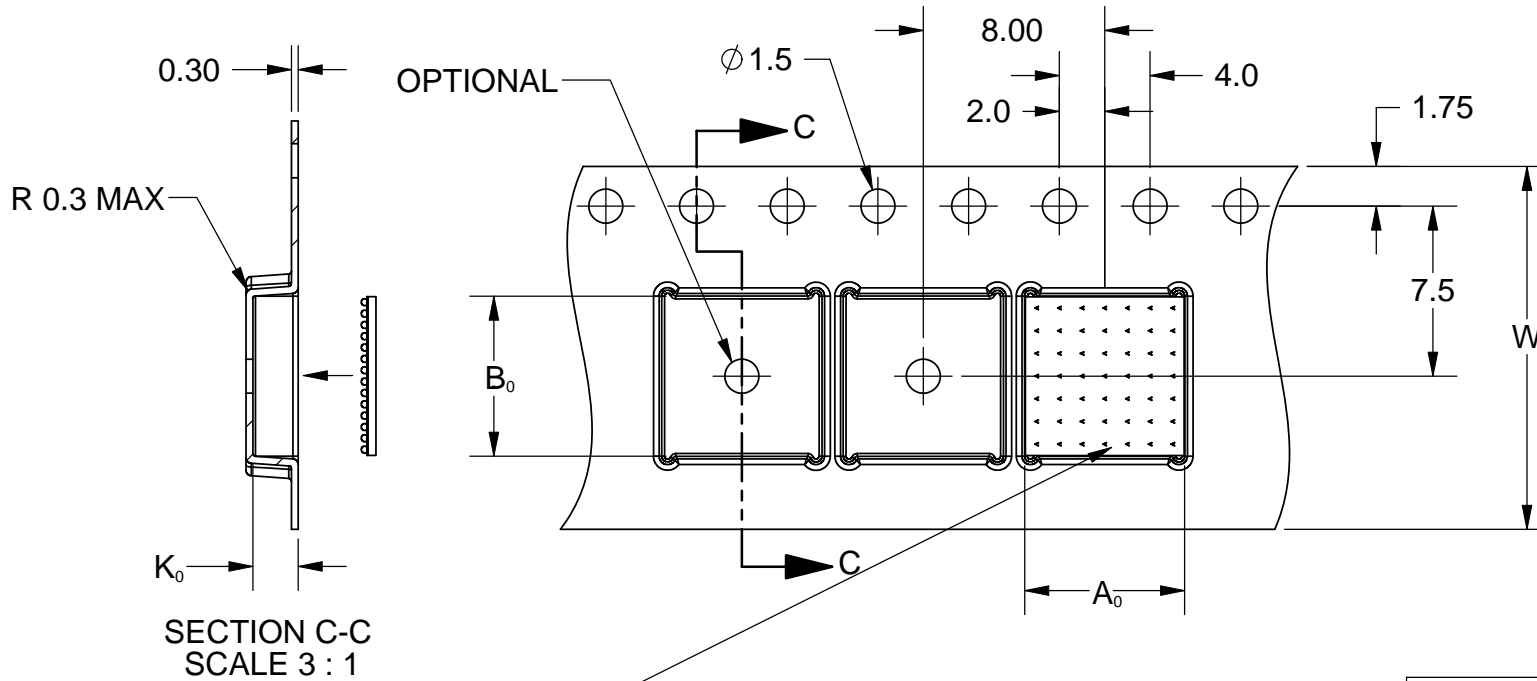
DETAIL A
SCALE 25 : 1

MARKING CODE	
PITCH	LETTER
0.3MM	A
0.4MM	A OR F
0.5MM	A OR F

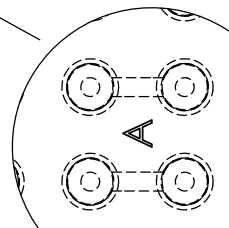
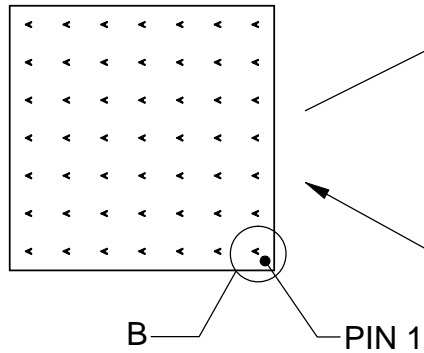
* SUBJECT TO CHANGE

APPROVALS		DATE	TopLine			
DRAWN	J. Hines	6/12/2016	TITLE WLP ORIENTATION TAPE AND REEL			
ENG	M. Hart	6/12/2016				
MFG			SCALE	SIZE	DRAWING NO.	REV
QA			12.5:1	A	504021	A
CUST			DO NOT SCALE DRAWING		SHEET 1 OF 2	
REVISED						

EXAMPLE OF CARRIER TYPE



DIMENSION TABLE (MM)	
A ₀ =	7.05
B ₀ =	7.05
K ₀ =	2.00
W =	16.00



DAISY CHAIN ORIENTATION
DETAIL B
SCALE 25 : 1

Notes: (Unless Otherwise Specified).

- 1) CARRIER TAPE SHOWN AS EXAMPLE ONLY. ACTUAL TAPE DIMENSIONS ARE DEPENDENT ON X/Y/Z SIZE OF WLP.
- 2) SURFACE OF WLP IS MARKED WITH SINGLE LETTER REPEATED MULTIPLE TIMES ACROSS TOP SURFACE.
- 3) ORIENT LETTERS ON WLP FOR LOCATION OF PIN A1 CORNER IN TAPE.

MARKING CODE	
PITCH	LETTER
0.3MM	A
0.4MM	A OR F
0.5MM	A OR F

* SUBJECT TO CHANGE

TITLE		WLP ORIENTATION TAPE AND REEL	
SCALE	SIZE	DRAWING NO.	REV
5:1	A	504021	A
DO NOT SCALE DRAWING			SHEET 2 OF 2