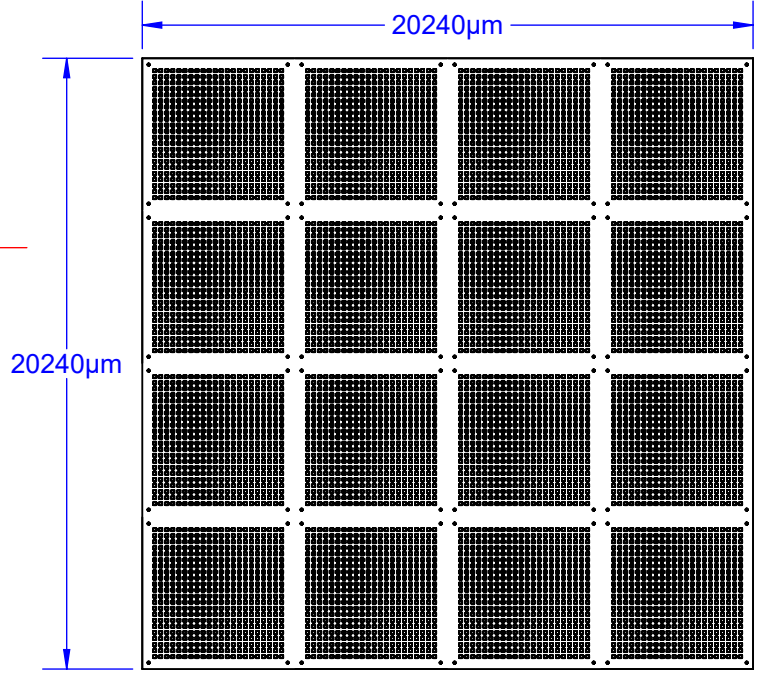


: 7 ++ ((: @D'7 <=D
&\$'I' &\$'a a
D=H7 <'&\$'\$' a

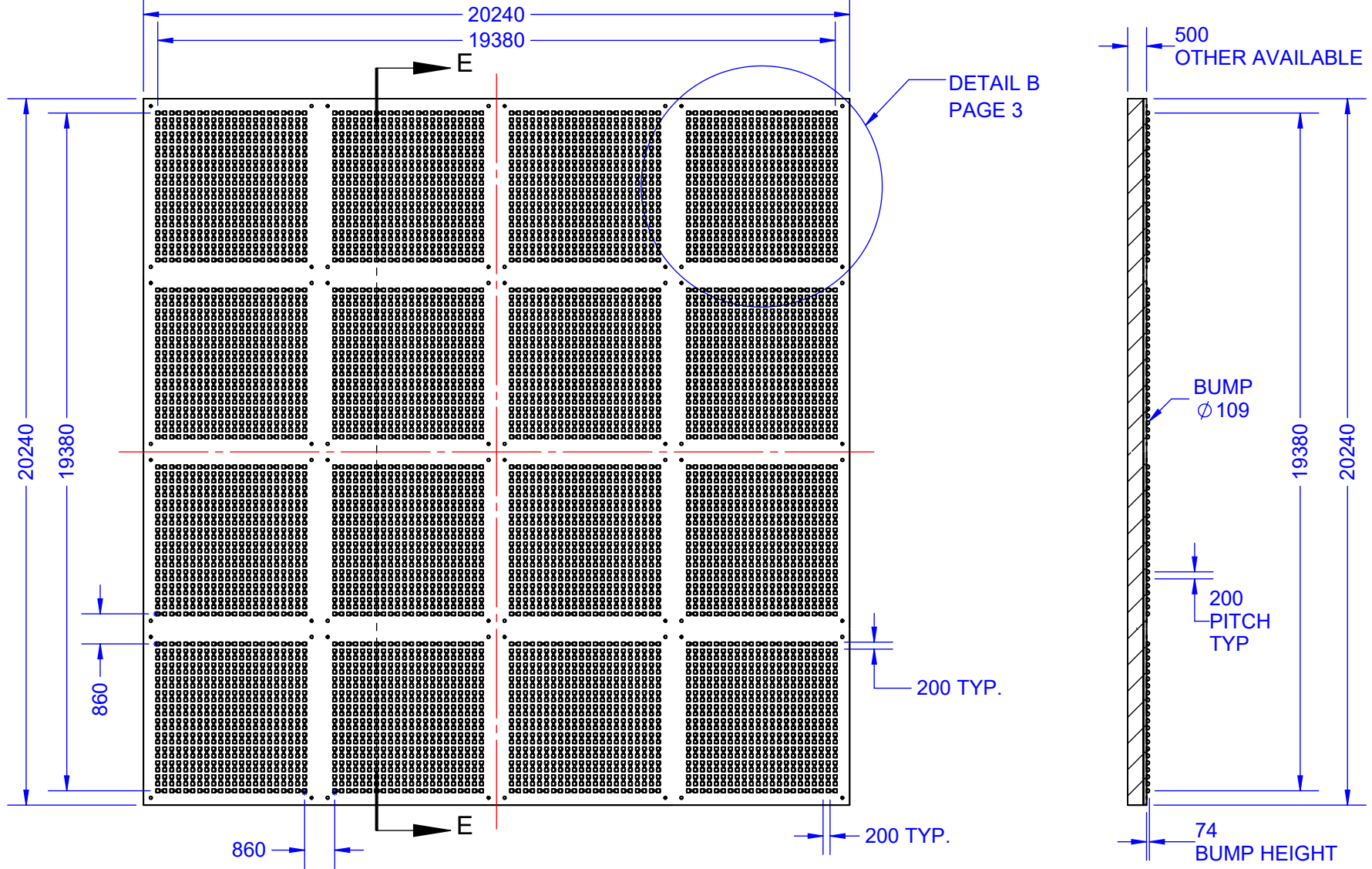
89H5 =@5
++(('6I AD



NOTES: (UNLES OTHERWISE SPECIFIED)

- 1) DIMENSIONS: MM [INCH].
- 2) DICING STREET WIDTH: 40 µm.
- 3) DICING INCREMENT: 20,240 µm.
- 4) BLADE KERF: 40~44 µm.

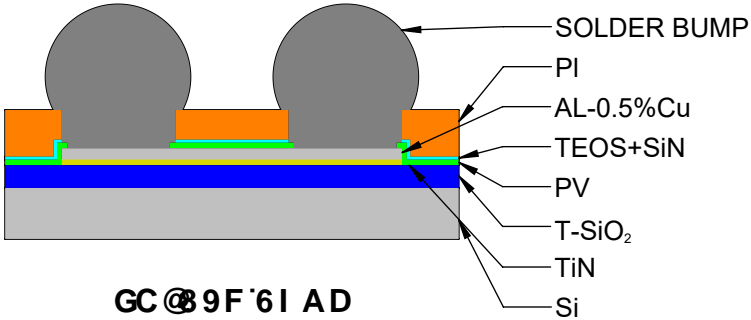
APPROVALS	DATE	TopLine®				
DRAWN	T.Au	6/23/2021	TITLE FC7744G20C200-DC DAISY CHAIN BUMPED DIE			
ENG	M. Hart	6/23/2021				
MFG			SCALE	SIZE	DRAWING NO.	REV
QA			2:3	A	177744	A
CUST			DO NOT SCALE DRAWING		SHEET 1 OF 9	
REVISED						



6I AD'J-9K

NOTES: (UNLES OTHERWISE SPECIFIED)

- 1) DIMENSIONS: μm (MICRON).
- 2) WAFER SIZE: $\phi 200$ mm (8-INCH).
- 3) BUMP ALLOY: SAC305.
- 4) BUMP HEIGHT: $74\mu\text{m}$.
- 5) BUMP DIAMETER: $109\mu\text{m}$.



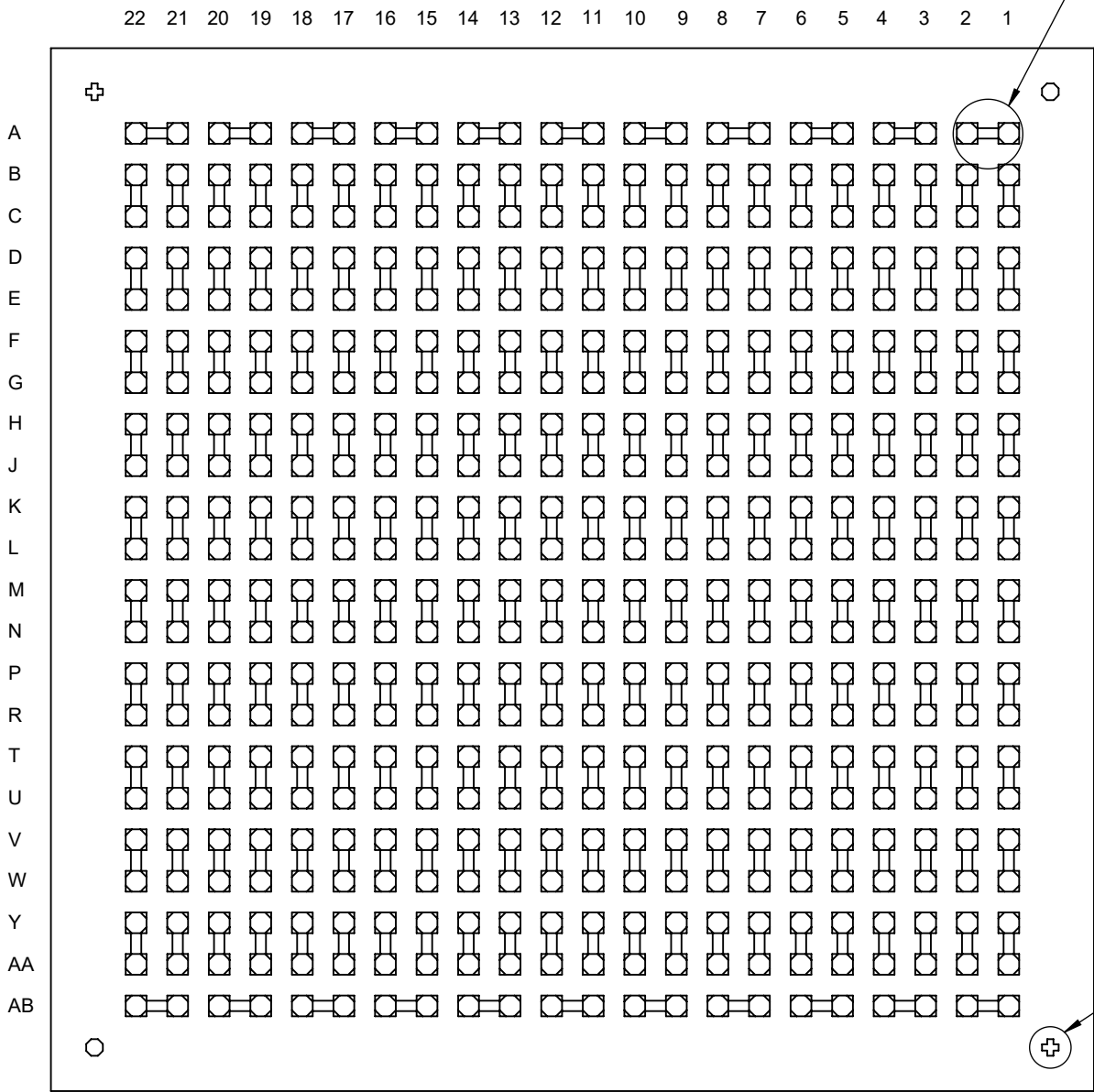
**GC@9F'6I AD
7FCGG'G97HCB**

**SECTION E-E
SCALE 6 : 1**

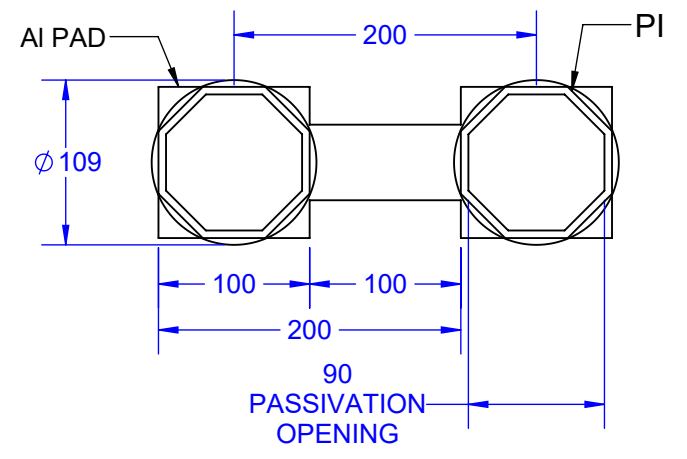
TopLine®			
TITLE FC7744G20C200-DC DAISY CHAIN BUMPED DIE			
SCALE 6:1	SIZE A	DRAWING NO. 177744	REV A
DO NOT SCALE DRAWING		SHEET 2 OF 9	

89H5=@6

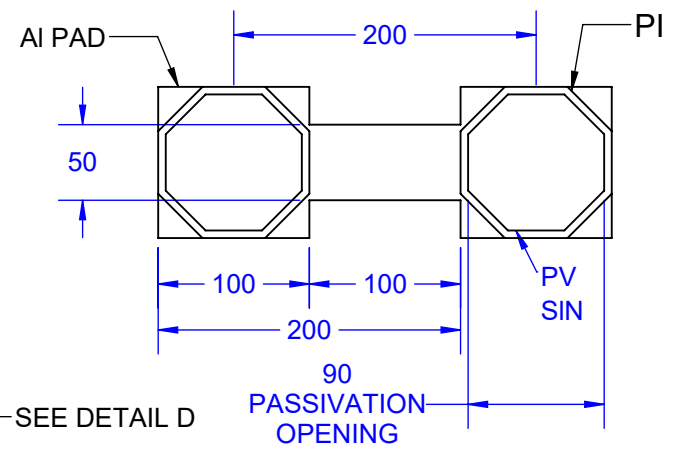
89H5=@7
GC@9F'6I AD'D58
G75@'1'&\$\$.%



SEE DETAIL C



D5 GG=J5 HCB'CD9B=B;
G75@'1'&\$\$.%



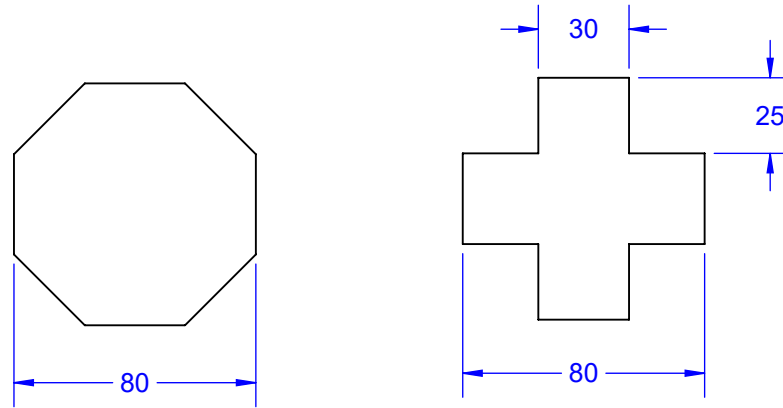
SEE DETAIL D

NOTES: (UNLES OTHERWISE SPECIFIED)

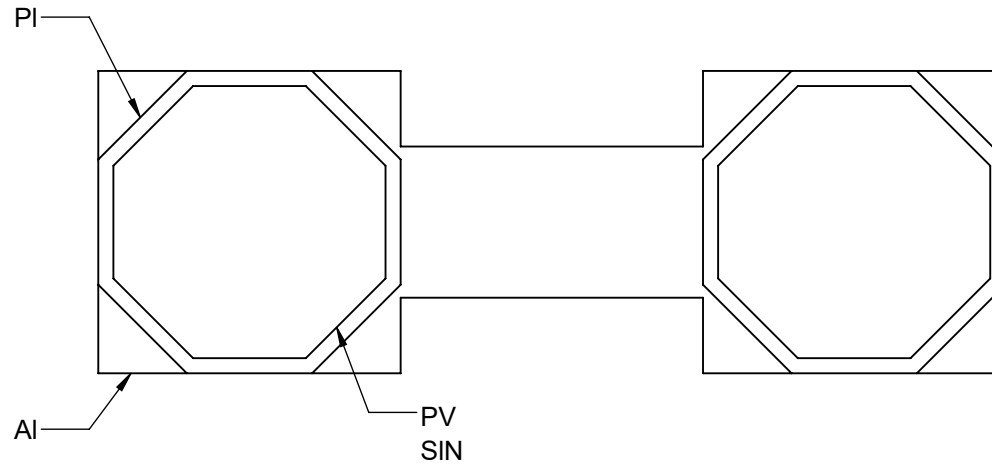
- 1) DIMENSIONS: μm (MICRON).
- 2) FC4356 = 9X FC484 (SEE DETAIL A).

TopLine[®]			
TITLE FC7744G20C200-DC DAISY CHAIN BUMPED DIE			
SCALE	SIZE	DRAWING NO.	REV
30:1	A	177744	A
DO NOT SCALE DRAWING			SHEET 3 OF 9

89H5=@8"
 : 8175@

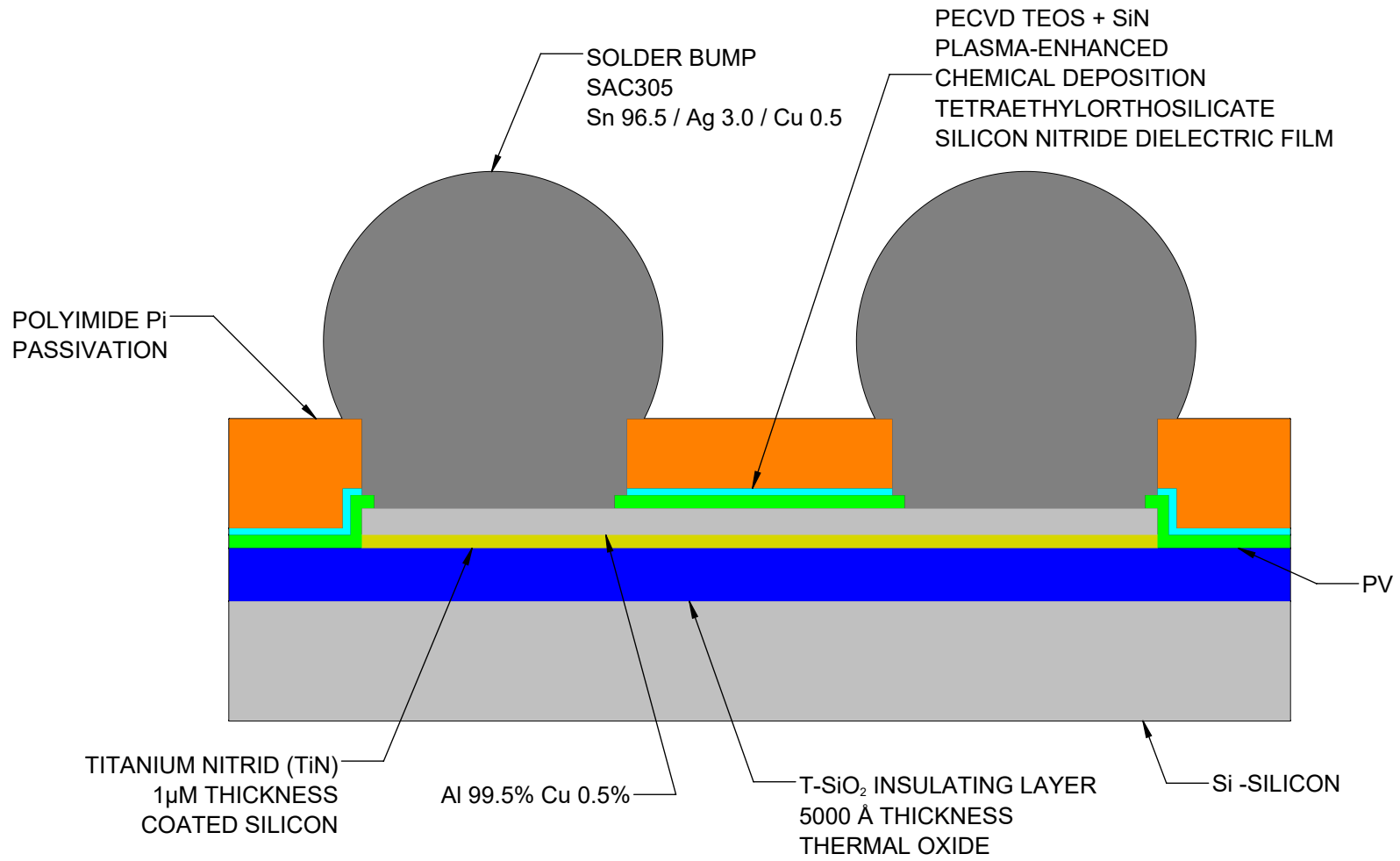


I 6 A 'D58 '89H5=@



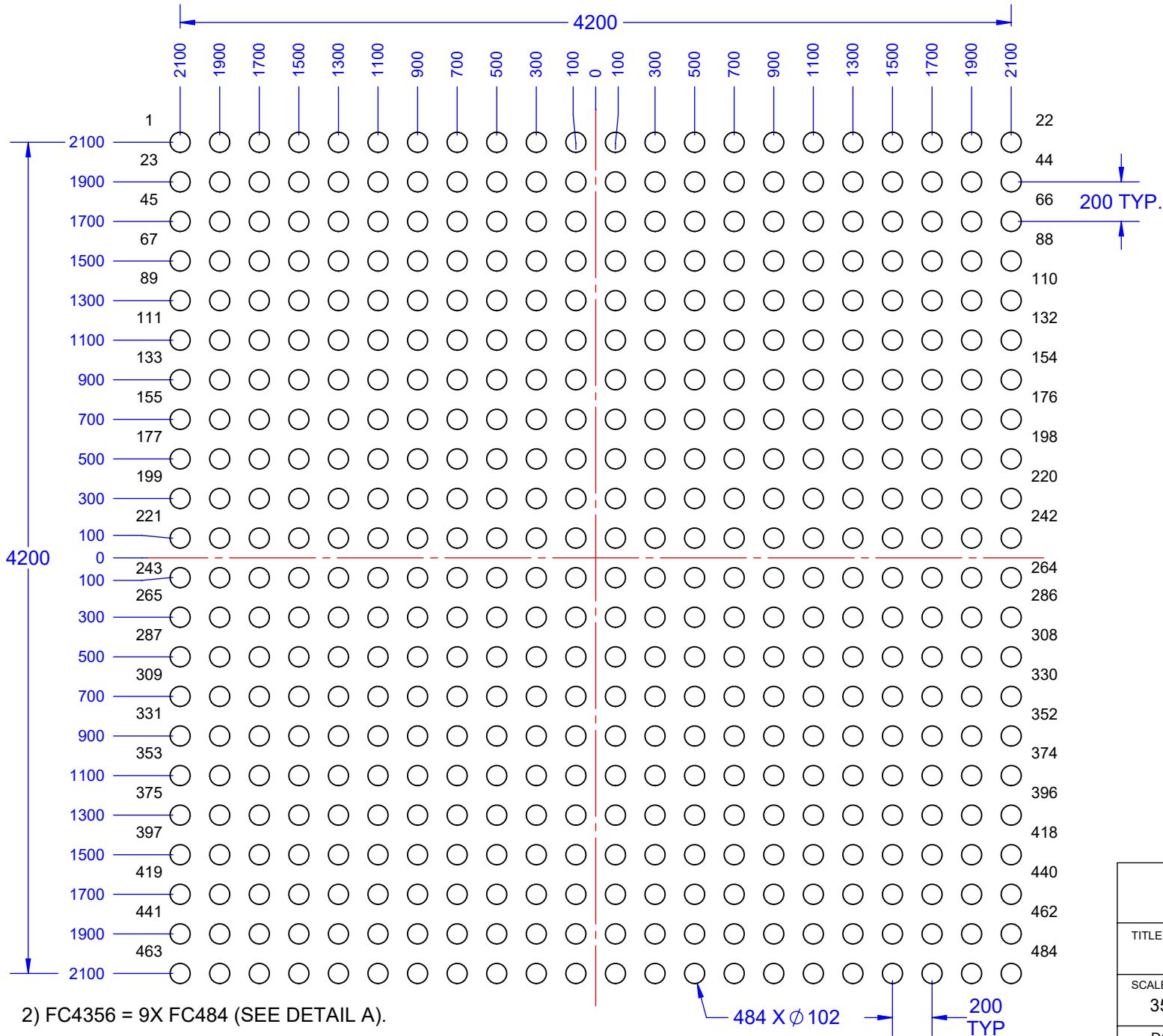
NOTES: (UNLES OTHERWISE SPECIFIED)
 1) DIMENSIONS: μm (MICRON).

TopLine[®]			
TITLE FC7744G20C200-DC DAISY CHAIN BUMPED DIE			
SCALE 400:1	SIZE A	DRAWING NO. 177744	REV A
DO NOT SCALE DRAWING		SHEET 4 OF 9	



TopLine[®]			
TITLE FC7744G20C200-DC DAISY CHAIN BUMPED DIE			
SCALE 400:1	SIZE A	DRAWING NO. 177744	REV A
DO NOT SCALE DRAWING		SHEET 5 OF 9	

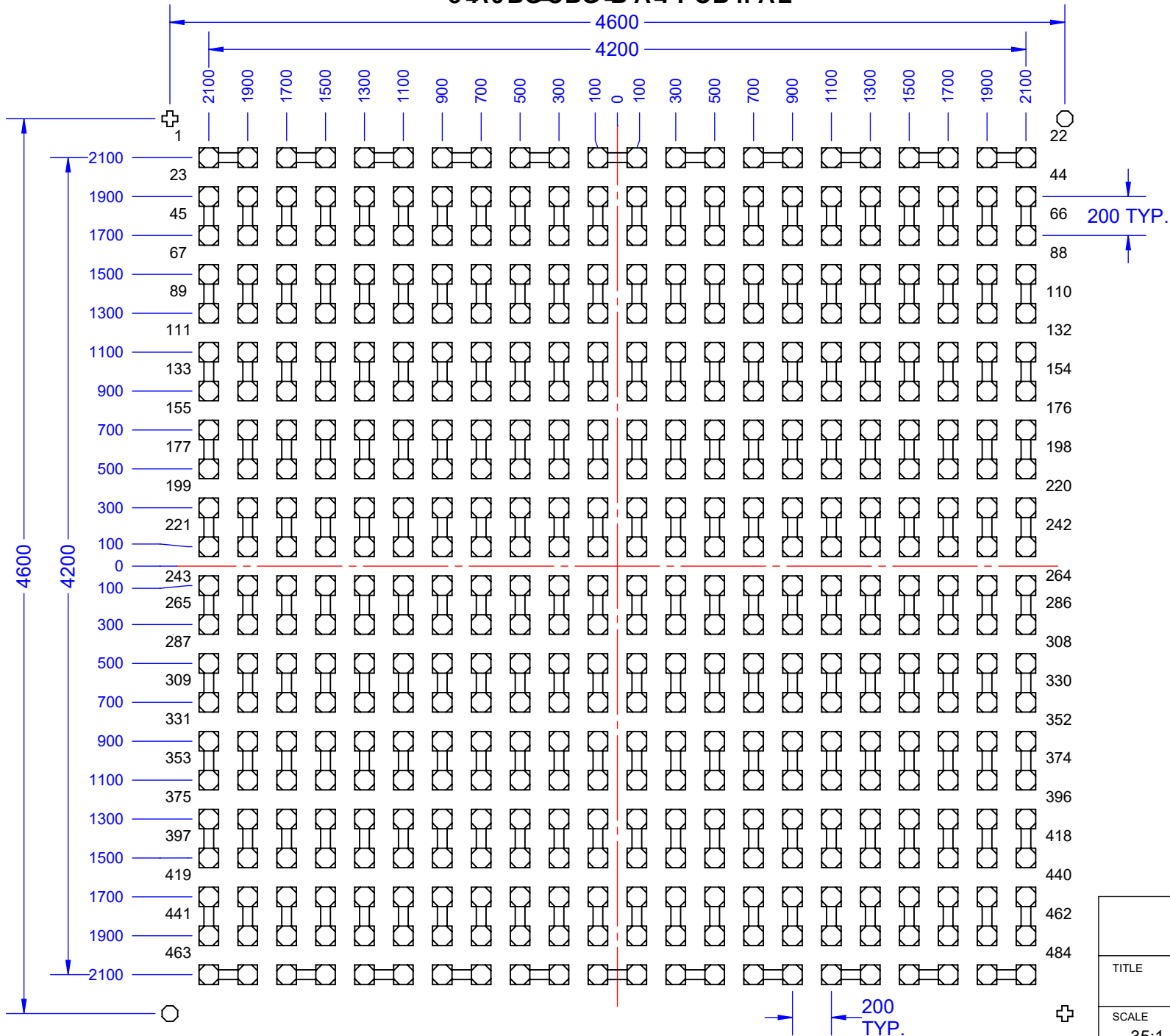
D58 @ C75 HCB
G<CK B'6I AD'J 9K
~~8-A9BG-CBG-B'A=FCB'fl AL~~



2) FC4356 = 9X FC484 (SEE DETAIL A).

TopLine®			
TITLE FC7744G20C200-DC DAISY CHAIN BUMPED DIE			
SCALE 35:1	SIZE A	DRAWING NO. 177744	REV A
DO NOT SCALE DRAWING			SHEET 6 OF 9

D58 @ C75 HCB
8-A9BG-CBG-B'A-7FCB'fl AL

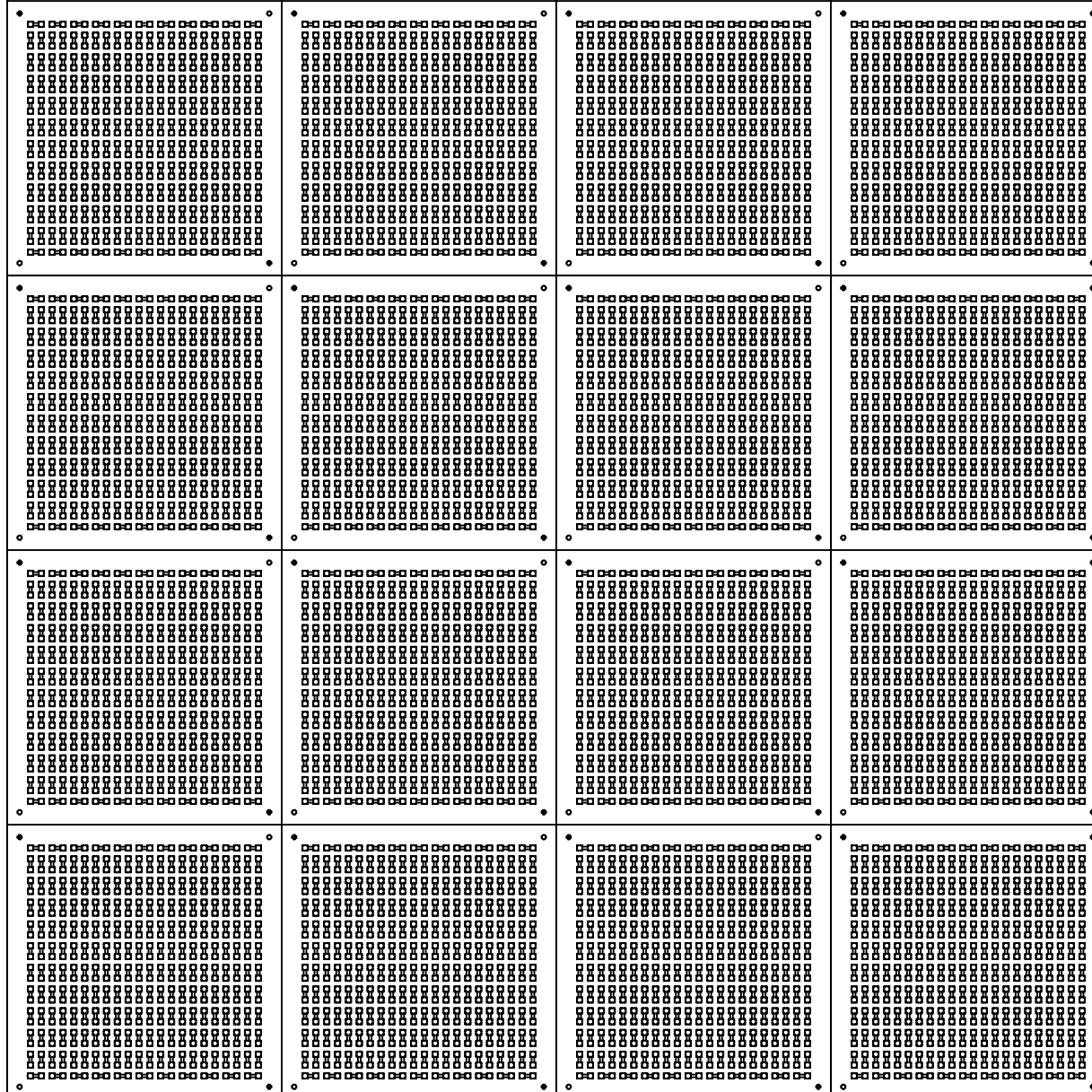


2) FC4356 = 9X FC484 (SEE DETAIL A)

TopLine®			
TITLE FC7744G20C200-DC DAISY CHAIN BUMPED DIE			
SCALE 35:1	SIZE A	DRAWING NO. 177744	REV A
DO NOT SCALE DRAWING		SHEET 7 OF 9	

8 7 B;
 8 A9BG-CBG-B'A 7 FCB'fl AL

++(' !&\$! &\$AA
 G75 @ , .%



— 0

— 5060

— 10120

— 15180

— 20240



TopLine®			
TITLE FC7744G20C200-DC DAISY CHAIN BUMPED DIE			
SCALE 8:1	SIZE A	DRAWING NO. 177744	REV A
DO NOT SCALE DRAWING			SHEET 8 OF 9

D5 FH'BI A 69F-B; 'GMGH9A

: 7 ++((;

: @D'7 <=D

FC = STANDARD FLIP CHIP
 FCW = BUMPED WAFER*
 FCN = BUMPLESS CHIP
 FCWN = BUMPLESS WAFER*

*200MM WAFER

BI A 69F'C: '6I ADG

BUMP	CHIPS
484	1X
1936	4X
2904	6X
4356	9X
7744	16X

6I AD'8=5A9H9F

DIAMETER ϕ 109 μ m
 HEIGHT 74 μ m

&\$ 7

8=9'G=N9

BUMP	SIZE
484	5 x 5 mm
1936	10 x 10 mm
2904	10 x 15 mm
4356	15 x 15 mm
7744	20 x 20 mm

D58'A5H9F=5 @

C = SAC BUMP
 A = AI PAD (BUMPESS)
 G = GOLD PAD (BUMPLESS)

&\$\$! CDH=CB !

6I AD'D=H7 <

μ M

8=9'H<=BB=B;

CODE	μ M	MIL
NONE	500	20
BG400	400	16
BG350	350	14
BG300	300	12
BG250	250	10
BG200	200	8

OTHER THICKNESS
 AVAILABLE

87 ! D57?5; =B;

85 =GM7 <5 =B

CDH=CBG

BLANK = TRAY (STANDARD)

BUMP	TRAY	QTY
484	2-INCH	36 PCS
1936	4-INCH	49 PCS
2904	4-INCH	24 PCS
4356	4-INCH	25 PCS
7744	4-INCH	9 PCS

WAFER FORMAT
 C = CASSETTE
 UV = UV TAPE
 WAFER RING
 NT = NON UV TAPE
 WAFER RING
 GP = GEL-PAK

TopLine®			
TITLE FC7744G20C200-DC DAISY CHAIN BUMPED DIE			
SCALE	SIZE	DRAWING NO.	REV
NONE	A	177744	A
DO NOT SCALE DRAWING			SHEET 9 OF 9