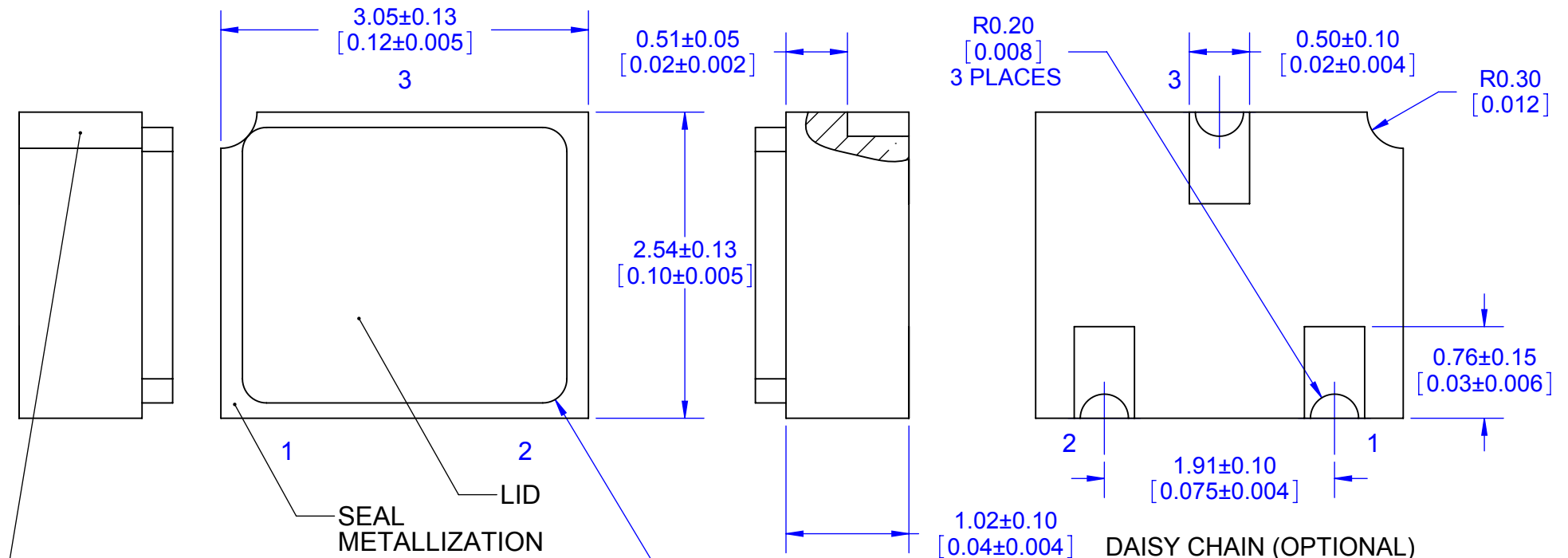


SIDE

TOP

SIDE

BOTTOM



SEAL METALLIZATION LID

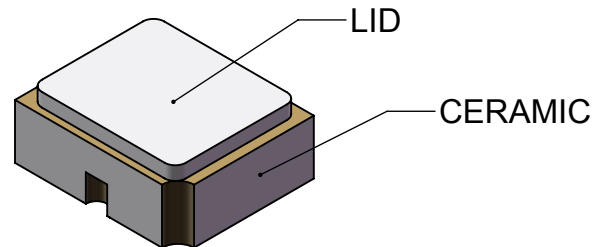
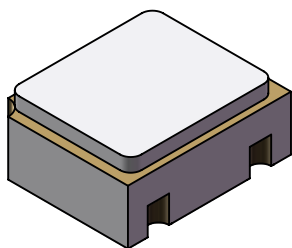
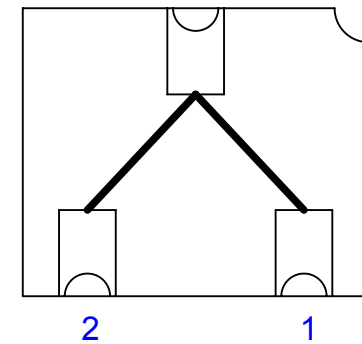
THIS METALLIZATION TO BE ELECTRICALLY CONNECTED TO THE SEAL RING

R0.20 [0.008] 4 PLACES

DAISY CHAIN (OPTIONAL)

PART NUMBER	LID	PLATING	DAISY CHAIN
LCC3R.12X.10-N	OPEN UNSEALED	NiAu	NO
LCC3R.12X.10	SEALED	NiAu	NO
LCC3R.12X.10-SC	SEALED	SnPb	NO
LCC3R.12X.10-DC123	SEALED	NiAu	YES
LCC3R.12X.10-DC123-SC	SEALED	SnPb	YES

Note:
GOLD PLATE 1.5µm MIN
OVER 2.0µm NICKEL.
Except CASTELLATION



APPROVALS	DATE				
DRAWN T.Au	10/24/14	TITLE LCC3 NON-GROUNDED SEAL RING			
ENG M. Hart	10/24/14				
MFG		SCALE 20:1	SIZE A	DRAWING NO. 140300	REV A
CUST		DO NOT SCALE DRAWING			SHEET 1 OF 1
REVISED					