

Gold Wire Handling Training

Normal Case

(Start Tape Face Outside)

- **Normal Case Transferring from Packaging Box**
- **Spool Loading**
- **Re-taping & Storing**
- **Consequences of Mishandling of Wires**

Introduction

2/24



TWEEZER



GOLD WIRE



COVER



TRAY

Normal Case Handling

3/24

1 START STEP

Open up the packaging box.



2 TAKE OUT GOLD WIRE FROM THE PACKAGING BOX

Take out the gold wire carefully from the packaging box by holding at harder area of the casing (contact area between cover and tray).



Normal Case Handling

PRECAUTION : DO NOT DO THIS !

Do not hold the gold wire at the tray only. This might loosen the connection between the cover and tray.

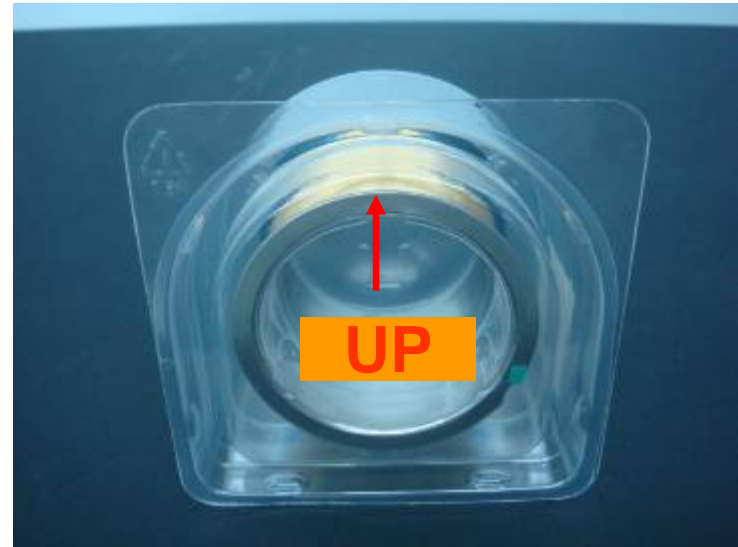


Do not hold at cover only. This might loosen the connection between the cover and tray or damage the wire in side the casing.



3 PLACING THE GOLD WIRE AFTER TAKEN OUT FROM PACKAGING BOX

Placing the gold wire in up
position in the container.



Normal Case Handling

6/24

PRECAUTION : DO NOT DO THIS !

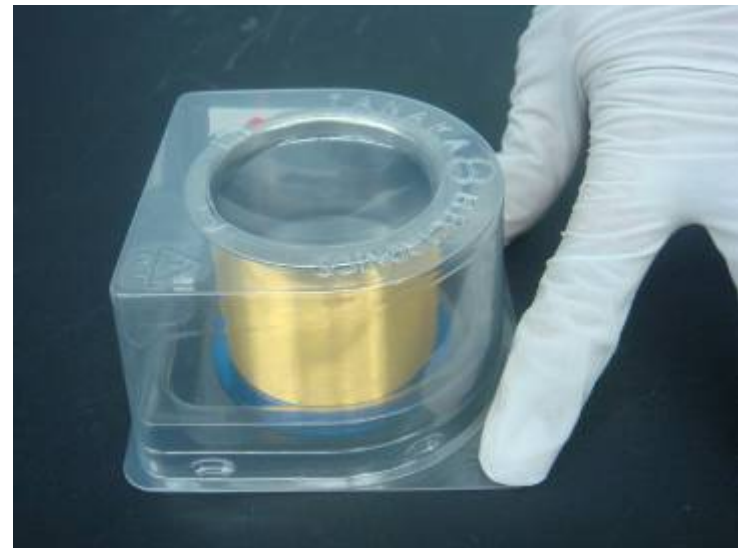
Do not put the gold wire in horizontal position.



4 PREPARE FOR LOADING

Place gold wire on flat surface.

Press 'TRAY' upper edges as shown in diagram.

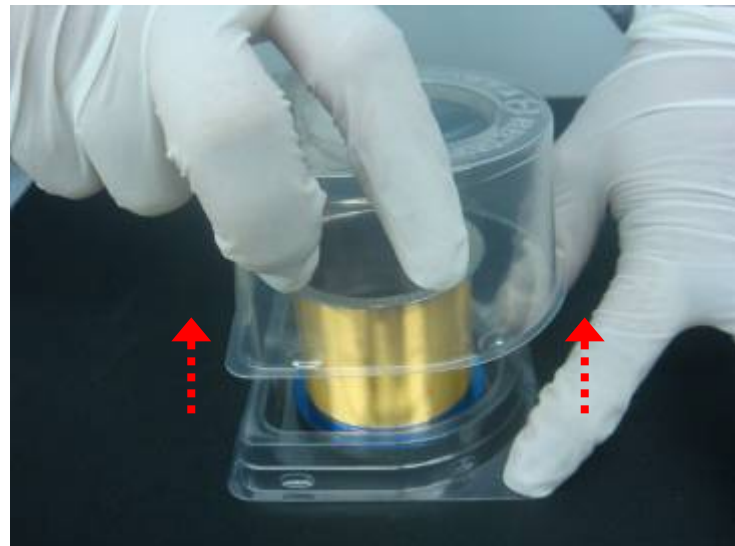


5 OPEN COVER

Carefully lift and
remove the 'COVER'.

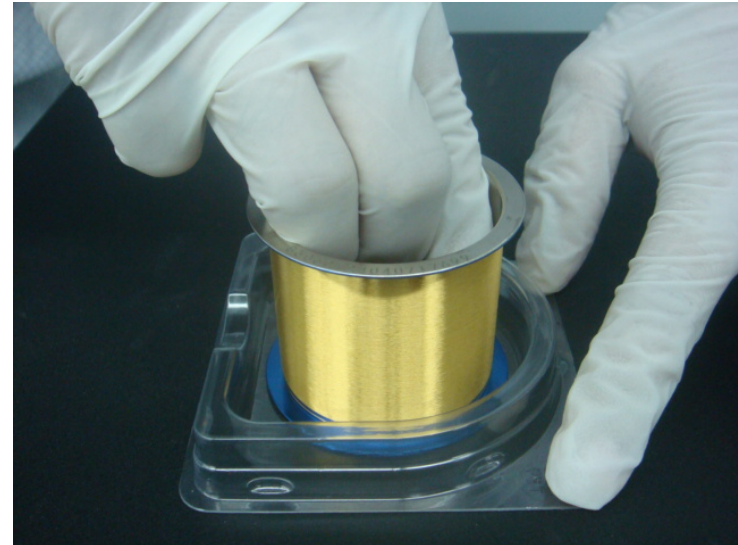


Open the 'COVER' in
perpendicular direction
with the 'TRAY'.



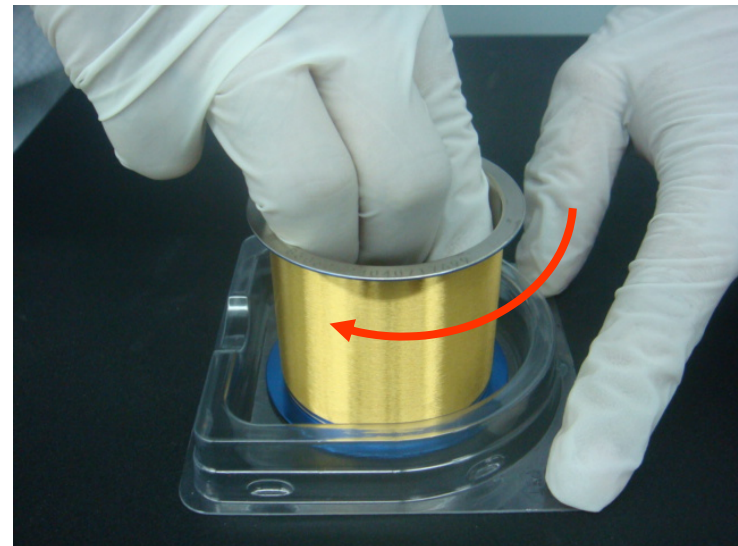
6 REMOVE SPOOL FROM 'TRAY'

Carefully remove spool by firmly pressing inner spool area.



7 TAKE OUT SPOOL

Using three fingers, slowly turn the spool before taking out.



8 SPOOL HOLDING METHOD

Hold spool by inner diameter.

(Try not to hold by the spool flange)

Spool Flange



Copyright © TANAKA DENSHI KOGYO K.K., All Rights Reserved.

9 SPOOL LOADING

Load spool onto bonding machine carefully.

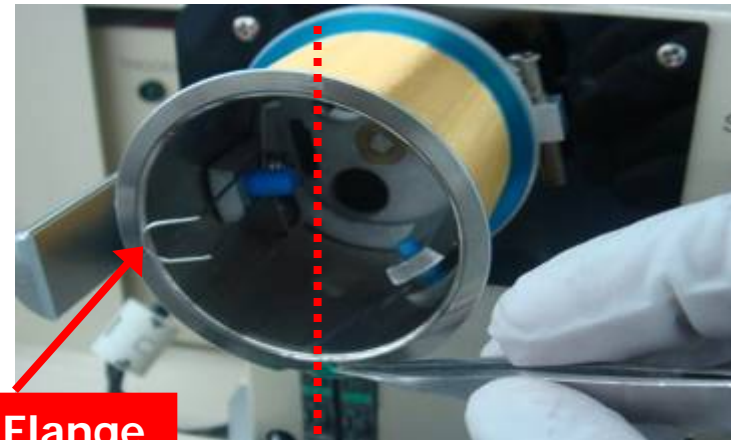


10 REMOVE TERMINAL TAPE

Ensure green [start tape] position at 6 o'clock before carefully peeling off the terminal tape using tweezers, and proceed as per normal set-up operation.

* Please do not cut the wire to avoid spring back and damage the spool flange.

* In the case where earth grounding is needed, install the spool after removing the terminal tape at the other side of the spool.



Spool Flange

6 o'clock

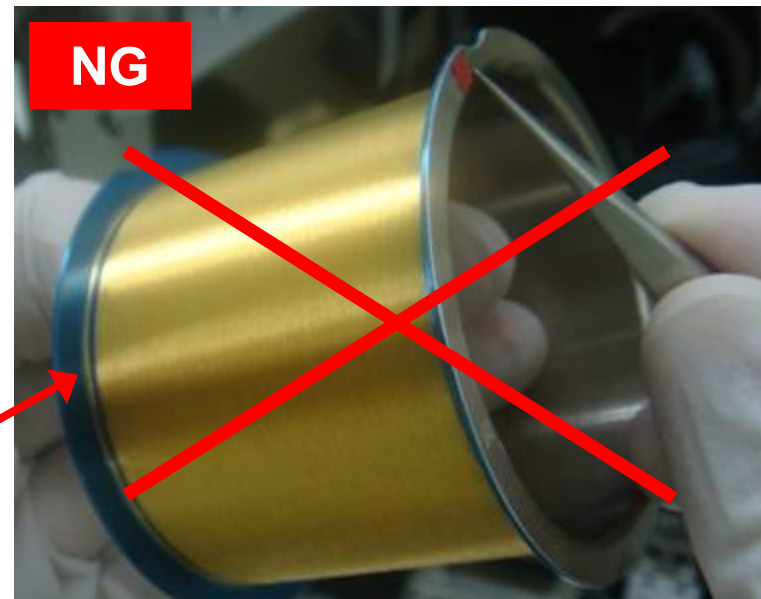
Normal Case Handling

12/24

PRECAUTION : DO NOT DO THIS !

Ensure the spool is not slanted when open the terminal tape of the other side of the spool.

This is to avoid wire from being loose and accumulate at spool flange.

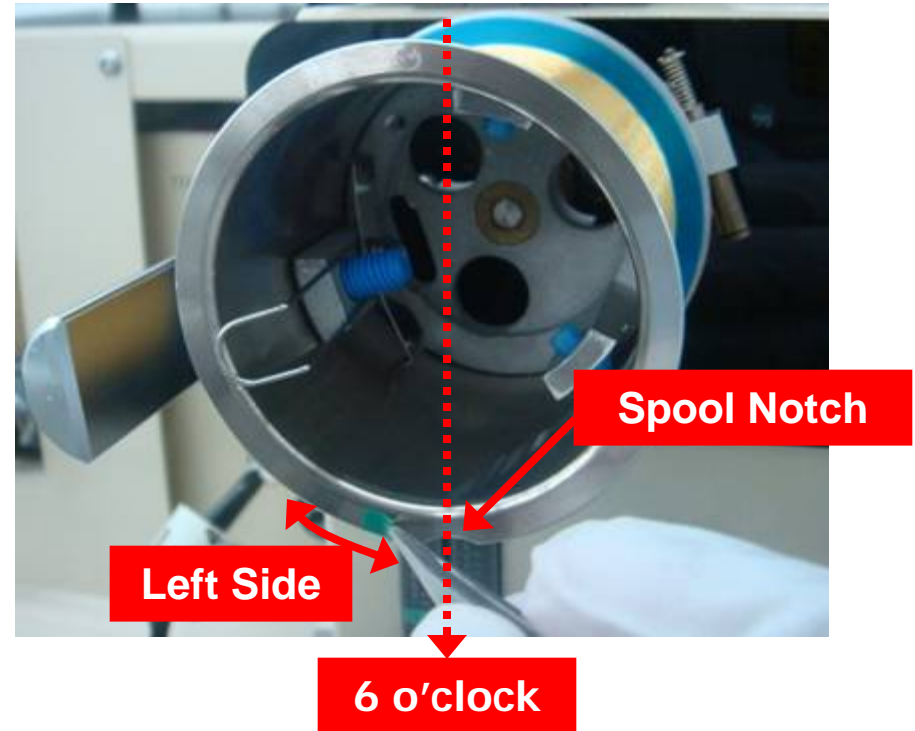


Wire Loose

11 PREPARING TO USE THE GOLD WIRE

Keep the terminal tape on the spool flange for easy retrieval when storing unfinished wire.

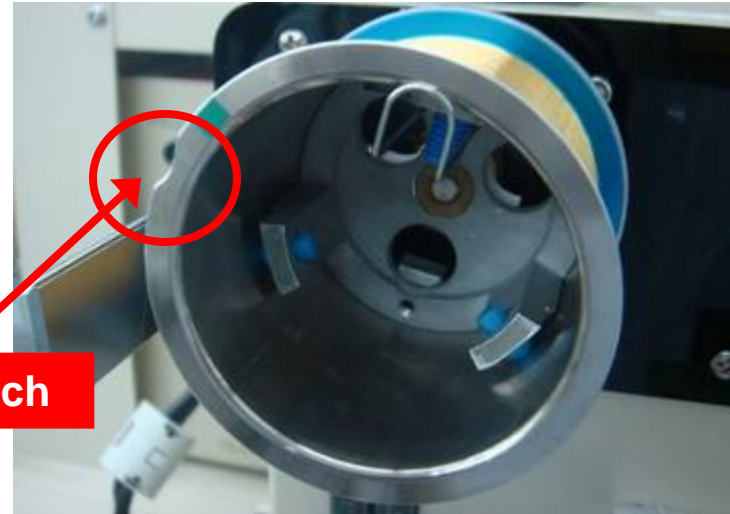
* Do not tape the terminal tape at the same place. Keep it at left side of the spool notch.



You may now start to tread the wire and start bonding!

12 STORING UNFINISHED GOLD WIRE

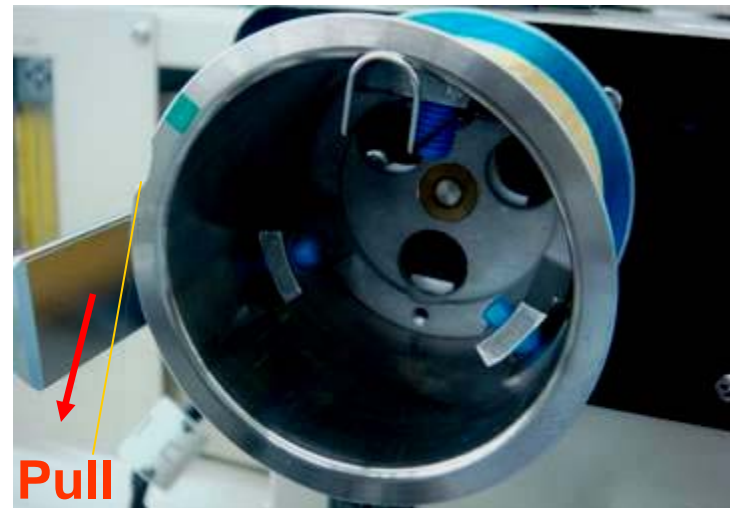
Spool notch to be positioned at 10 o'clock.



Spool Notch

13 RETAPING UNFINISHED GOLD WIRE

From spool notch, firmly pull the wire against the spool flange.



Pull

14 RETAPING

Still holding the wire, re-tape the wire using the terminal tape on the spool flange .



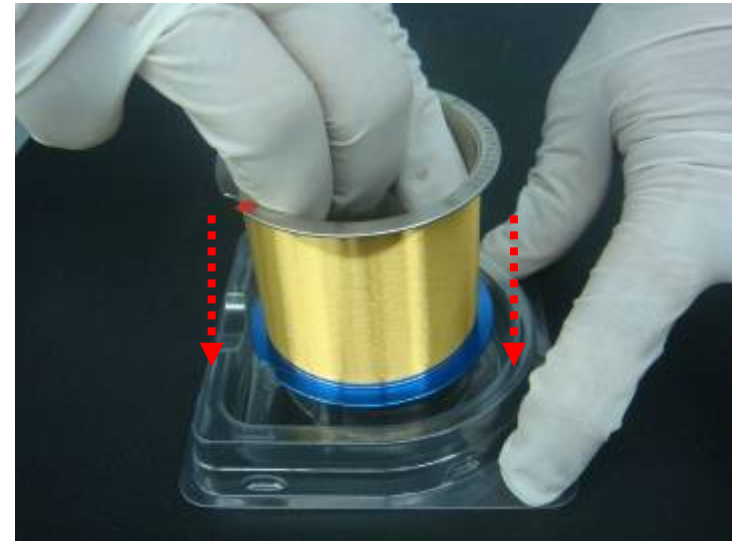
15 REMOVING SPOOL

Take out the spool from bonding machine (Without touching wire surface).



16 STORING BALANCE GOLD WIRE

Press at 'TRAY' upper edges and slide the spool vertically downwards.

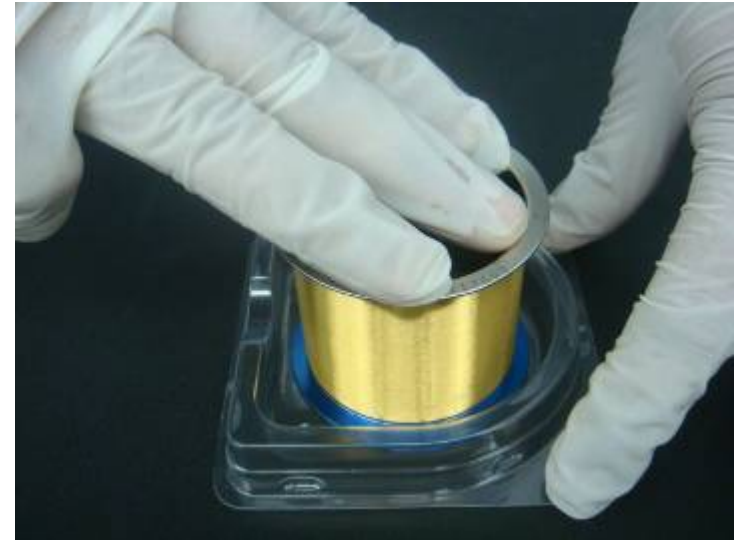


Ensure the spool notch is at 8 o'clock position.



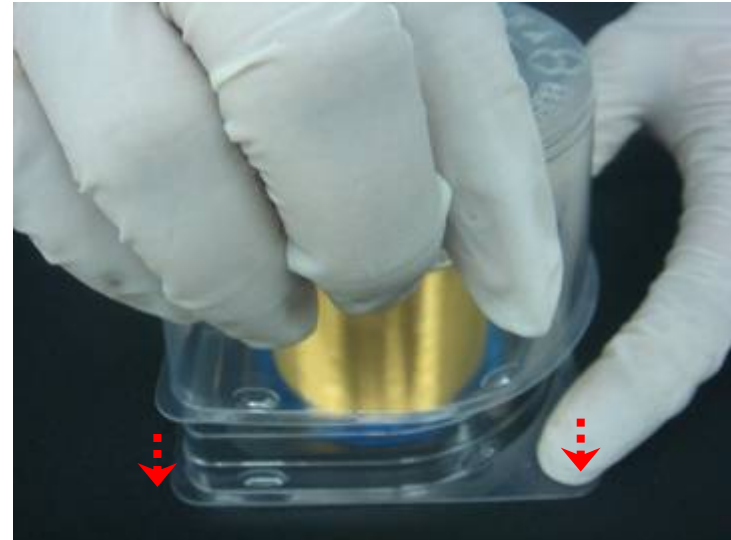
17 SECURE SPOOL INTO TRAY

Press the spool onto the “TRAY” securely.



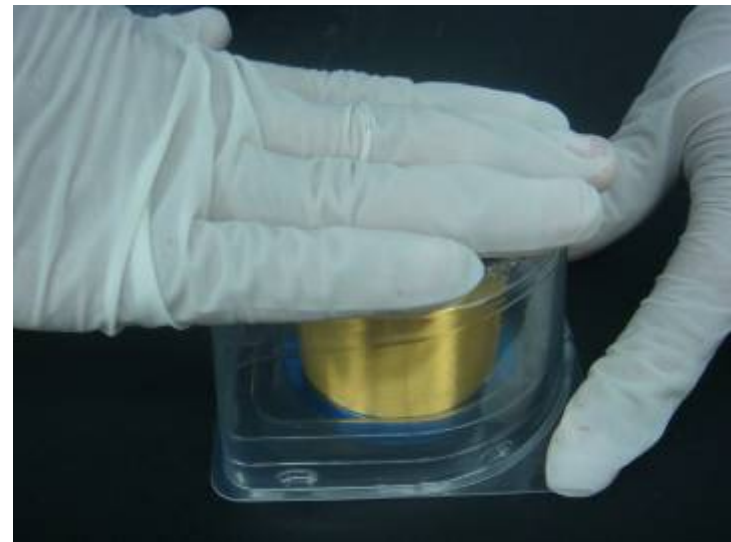
18 CLOSING 'COVER'

Make sure 'COVER' is in perpendicular direction with the 'TRAY' when closing.



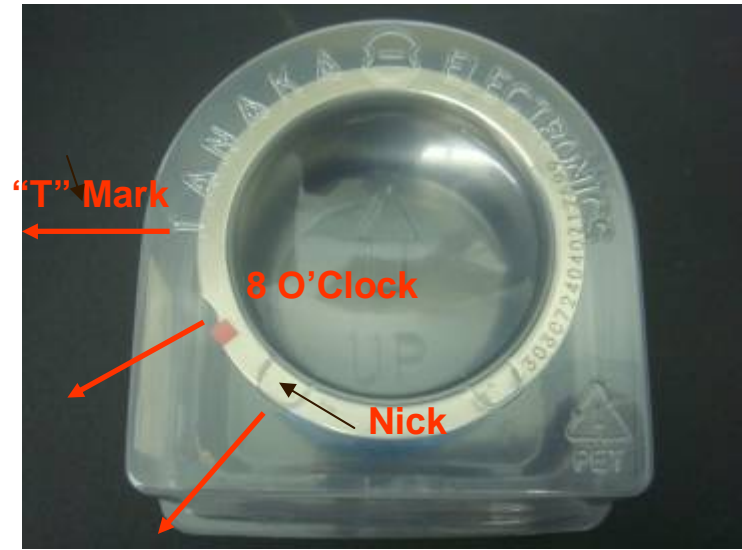
19 SECURE 'COVER' ONTO 'TRAY'

Use palm slowly to press downward the 'COVER' onto 'TRAY'.

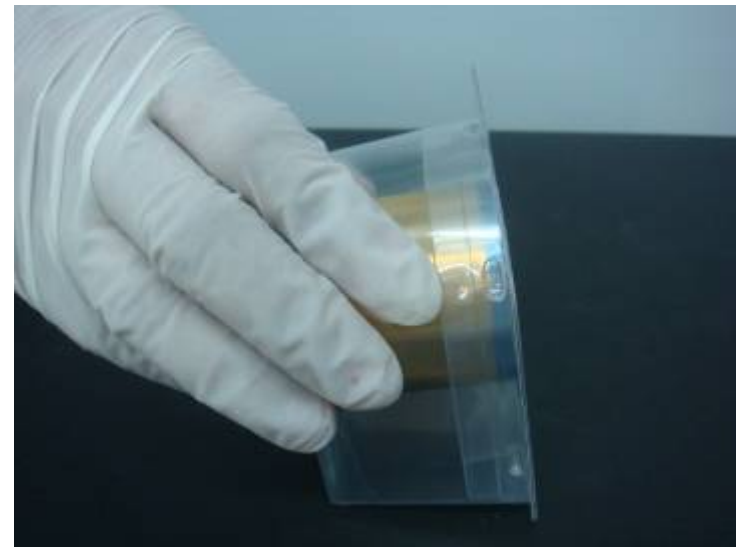


20 CORRECT SPOOL POSITION

Spool notch shall target at 8 o'clock position (there is between "T" mark & nick).



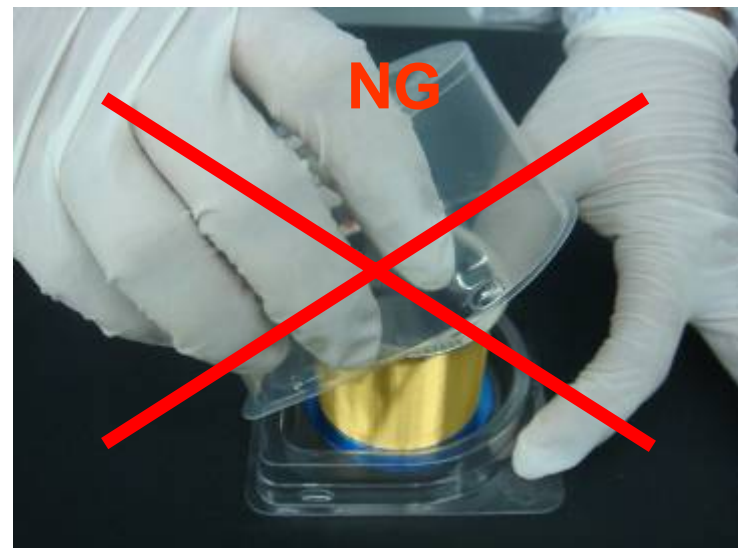
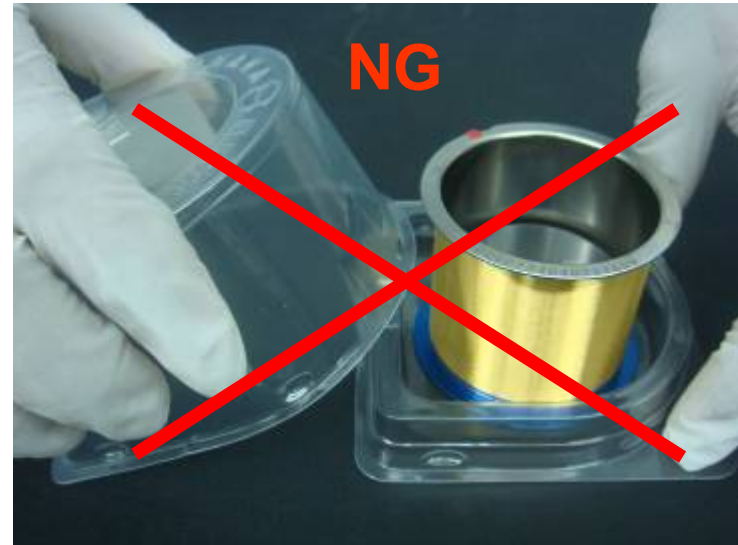
The product should be in upright position to prevent any wire loose condition.



Normal Case Handling

20/24

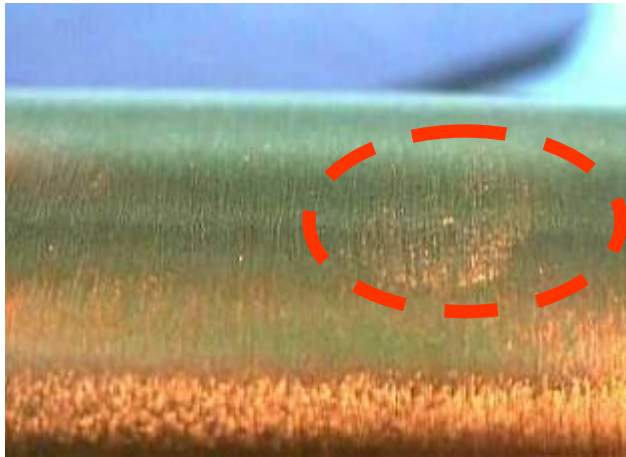
PRECAUTION : DO NOT DO THIS !
Do not close in horizontal direction
(might damage the wire surface).



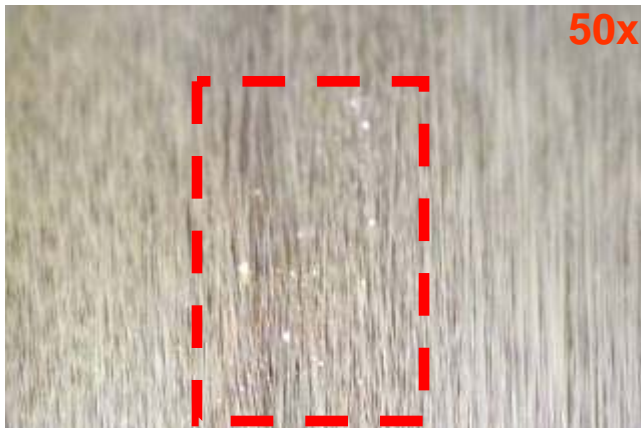
Consequences of Mishandling

21/24

1) Finger Prints on Wire Surface

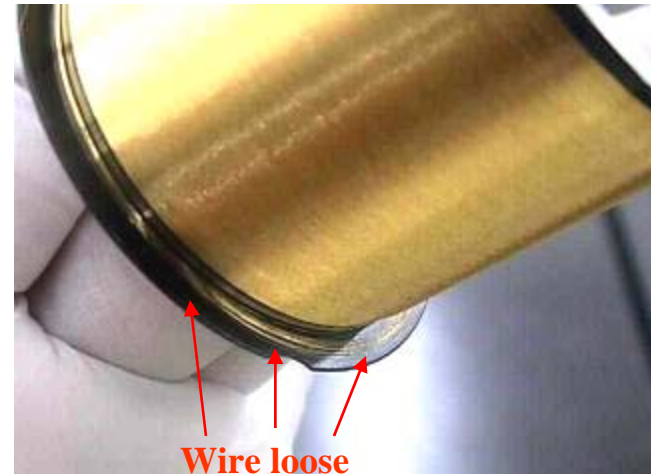
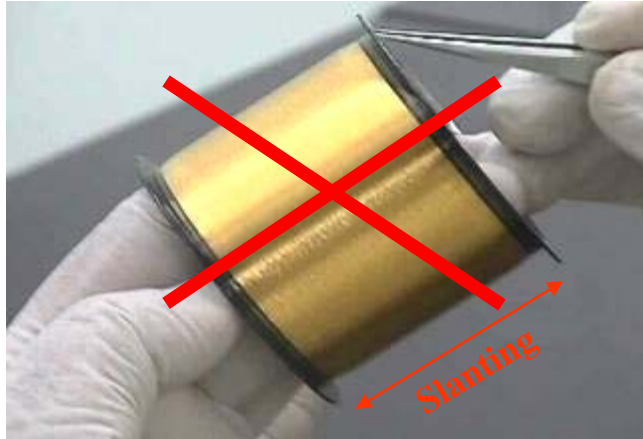


2) Wire damaged / dented



Consequences of Mishandling

3) Wire Entangled/Broken



Wire damage and contamination will cause wire...

- **Improper ball (FAB) formation**
- **Wire stuck**
- **Wire broken**
- **Wire sway/touch after bonding**

End of Presentation